

FL SWITCH 3012E-2FX SM - Industrial Ethernet Switch



2891119

<https://www.phoenixcontact.com/pc/products/2891119>

Please be informed that the data shown in this PDF document is generated from our online catalog. Please find the complete data in the user documentation. Our general terms of use for downloads are valid.



Managed Ethernet switch meets IEC 61850-3 and IEEE 1613 standards. Provides 12 RJ45 ports at 10/100 Mbps, two SC-D SM fiber optic ports and operating temperature of -40°C ... +70°C.

Product description

FL SWITCH 3000 managed industrial Ethernet switches combine extensive network performance and security features with complete IEEE redundancy (STP/RSTP/MST) and 15 ms recovery time extended ring redundancy. Unique web customization provides a simplified user interface for today's applications and scalable functionality for future needs. A comprehensive mix of fiber optic and copper port connections meets a wide range of applications.

Your advantages

- Network structure according to IEC 61850
- IEEE 1613

Commercial data

Item number	2891119
Packing unit	1 pc
Minimum order quantity	1 pc
Product key	DNN125
Catalog page	Page 317 (C-6-2019)
GTIN	4055626292762
Weight per piece (including packing)	1,657 g
Weight per piece (excluding packing)	1,657 g
Customs tariff number	85176200
Country of origin	TW

FL SWITCH 3012E-2FX SM - Industrial Ethernet Switch



2891119

<https://www.phoenixcontact.com/pc/products/2891119>

Technical data

Dimensions

Width	78.6 mm
Height	145 mm
Depth	125 mm

Material specifications

Housing material	Aluminum
------------------	----------

Mounting

Mounting type	DIN rail mounting
---------------	-------------------

Interfaces

Ethernet (RJ45)

Connection method	RJ45
Note on the connection method	Auto negotiation and autocrossing
Transmission speed	10/100 Mbps
Transmission physics	Ethernet in RJ45 twisted pair
Transmission length	100 m
No. of channels	12 (RJ45 ports)

Fiber optic interface

Connection method	SC
Transmission speed	100 Mbps (full duplex)
Transmission physics	Single-mode fiberglass
Transmission length	40 km (fiberglass with F-G 9/125 0.36 dB/km)
Wavelength	1300 nm
No. of channels	2 (SC single mode)

Product properties

Product type	Switch
Product family	Managed Switch 3000
Type	Block design
MTTF	29 Years (MIL-HDBK-217F standard, temperature 25°C, operating cycle 100%)

Data management status

Article revision	03
------------------	----

Switch functions

Basic functions	Store and forward switch, Extended Ring and IEEE redundancy, Multicast control, IGMP snooping, trunking, Port and Tagging VLANs, Port and IEEE 802.1x security, SNMP V3 and Https security, SNTP, web customization, user accounts
Signal contact control voltage	24 V DC

FL SWITCH 3012E-2FX SM - Industrial Ethernet Switch



2891119

<https://www.phoenixcontact.com/pc/products/2891119>

Signal contact control current	100 mA
Redundancy	ERR (Extended ring redundancy)
Status and diagnostic indicators	LEDs: U_{S1} , U_{S2} (redundant voltage supply), link and activity per port

Security functions

Basic functions	Store and forward switch, Extended Ring and IEEE redundancy, Multicast control, IGMP snooping, trunking, Port and Tagging VLANs, Port and IEEE 802.1x security, SNMP V3 and Https security, SNTP, web customization, user accounts
-----------------	--

Electrical properties

Local diagnostics	US1, US2 Supply voltage Green LED LNK/ACT Link status/data transmission Green LED
Test section	Supply voltage/functional ground 500 V 1 min.
Transmission medium	Copper

Supply

Supply voltage (DC)	24 V DC (redundant)
Supply voltage range	12 V DC ... 48 V DC
Residual ripple	3.6 V _{PP} (within the permitted voltage range)
Typical current consumption	320 mA (at $U_S = 24$ V DC)

Function

Signal contact control voltage	24 V DC
Signal contact control current	100 mA

Connection data

Connection technology

Connection name	Power supply
-----------------	--------------

Power supply

Connection method	Pluggable COMBICON screw connections
Conductor cross section, rigid	0.2 mm ² ... 2.5 mm ²
Conductor cross section, flexible	0.2 mm ² ... 2.5 mm ²
Conductor cross section AWG	24 ... 12
Stripping length	7 mm

Environmental and real-life conditions

Ambient conditions

Degree of protection	IP20
Ambient temperature (operation)	-40 °C ... 70 °C
Ambient temperature (storage/transport)	-40 °C ... 85 °C
Permissible humidity (operation)	5 % ... 95 % (non-condensing)
Permissible humidity (storage/transport)	5 % ... 95 % (non-condensing)
Air pressure (operation)	57 kPa ... 108 kPa (up to 4850 m above mean sea level)

FL SWITCH 3012E-2FX SM - Industrial Ethernet Switch



2891119

<https://www.phoenixcontact.com/pc/products/2891119>

Air pressure (storage/transport)	57 kPa ... 108 kPa (up to 4850 m above mean sea level)
----------------------------------	--

Approvals

Conformity/Approvals

Conformance	CE-compliant
-------------	--------------

EMC data

Noise immunity	IEC 61850-3, IEEE 1613, EN 61000-6-2: 2005
Noise emission	EN 61000-6-4

System properties

Functionality

Basic functions	Store and forward switch, Extended Ring and IEEE redundancy, Multicast control, IGMP snooping, trunking, Port and Tagging VLANs, Port and IEEE 802.1x security, SNMP V3 and Https security, SNTTP, web customization, user accounts
-----------------	---

Signaling

Status display	LEDs: U _{S1} , U _{S2} (redundant voltage supply), link and activity per port
----------------	--

FL SWITCH 3012E-2FX SM - Industrial Ethernet Switch



2891119

<https://www.phoenixcontact.com/pc/products/2891119>

Classifications

ECLASS

ECLASS-11.0

19170401

UNSPSC

UNSPSC 21.0

43222612

FL SWITCH 3012E-2FX SM - Industrial Ethernet Switch



2891119

<https://www.phoenixcontact.com/pc/products/2891119>

Environmental product compliance

EU RoHS

Fulfills EU RoHS substance requirements	Yes
Exemption	15(a), 6(c), 7(a), 7(c)-I

China RoHS

Environment friendly use period (EFUP)	EFUP-10
	An article-related China RoHS declaration table can be found in the download area for the respective article under "Manufacturer declaration". For all articles with EFUP-E, no China RoHS declaration table issued and required.

EU REACH SVHC

REACH candidate substance (CAS No.)	Lead(CAS: 7439-92-1)
-------------------------------------	----------------------

FL SWITCH 3012E-2FX SM - Industrial Ethernet Switch



2891119

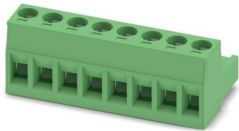
<https://www.phoenixcontact.com/pc/products/2891119>

Accessories

MSTB 2,5/ 8-ST - PCB connector

1754562

<https://www.phoenixcontact.com/pc/products/1754562>



PCB connector, nominal cross section: 2.5 mm², color: green, nominal current: 12 A, rated voltage (III/2): 320 V, contact surface: Sn, contact connection type: Socket, number of potentials: 8, number of rows: 1, number of positions: 8, number of connections: 8, product range: MSTB 2,5/...-ST, pitch: 5 mm, connection method: Screw connection with tension sleeve, screw head form: L Slotted, conductor/PCB connection direction: 0 °, locking clip: - Locking clip, plug-in system: COMBICON MSTB 2,5, locking: without, mounting: without, type of packaging: packed in cardboard

FL PATCH GUARD - Port Guard Security Element

2891424

<https://www.phoenixcontact.com/pc/products/2891424>



Lockable security element

FL SWITCH 3012E-2FX SM - Industrial Ethernet Switch



2891119

<https://www.phoenixcontact.com/pc/products/2891119>

FL PATCH GUARD KEY - Key

2891521

<https://www.phoenixcontact.com/pc/products/2891521>

Key for lockable security element



DT-LAN-CAT.6+ - Surge protection device

2881007

<https://www.phoenixcontact.com/pc/products/2881007>



Surge protection in accordance with Class E_A (CAT6_A), for Gigabit Ethernet (up to 10 Gbps), token ring, FDDI/CDDI, ISDN, and DS1. Suitable for Power over Ethernet (PoE++ / 4PPoE) "Mode A" and "Mode B". RJ45 attachment plug with separate grounding cable and ground connection snap-on foot for NS 35 DIN rails.

FL SWITCH 3012E-2FX SM - Industrial Ethernet Switch



2891119

<https://www.phoenixcontact.com/pc/products/2891119>

FL SEC PAC 4TX - Port Guard Security Element

2832865

<https://www.phoenixcontact.com/pc/products/2832865>

Layer1 security elements for 4 RJ45 network connections for use with patch boxes and panels



FL DIN RA - DIN rail adapter

2891053

<https://www.phoenixcontact.com/pc/products/2891053>

The FL DIN RA is installed in a standard, 19-inch rack (EIA-310-D, IEC 60297-3-100) to allow DIN rail mounted equipment to be rack mounted.



FL SWITCH 3012E-2FX SM - Industrial Ethernet Switch



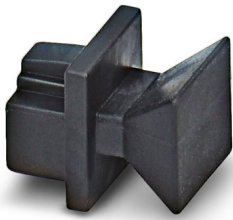
2891119

<https://www.phoenixcontact.com/pc/products/2891119>

FL RJ45 PROTECT CAP - Dust protection

2832991

<https://www.phoenixcontact.com/pc/products/2832991>

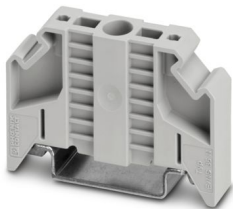


Dust protection caps for RJ45 socket

E/NS 35 N - End bracket

0800886

<https://www.phoenixcontact.com/pc/products/0800886>



End clamp, width: 9.5 mm, color: gray

FL SWITCH 3012E-2FX SM - Industrial Ethernet Switch



2891119

<https://www.phoenixcontact.com/pc/products/2891119>

FL CAT5 PATCH 0,5 - Patch cable

2832263

<https://www.phoenixcontact.com/pc/products/2832263>

Patch cable, CAT5, assembled, 0.5 m



FL CAT5 PATCH 1,0 - Patch cable

2832276

<https://www.phoenixcontact.com/pc/products/2832276>

Patch cable, CAT5, assembled, 1 m



FL SWITCH 3012E-2FX SM - Industrial Ethernet Switch



2891119

<https://www.phoenixcontact.com/pc/products/2891119>

FL CAT5 PATCH 2,0 - Patch cable

2832289

<https://www.phoenixcontact.com/pc/products/2832289>

Patch cable, CAT5, assembled, 2 m

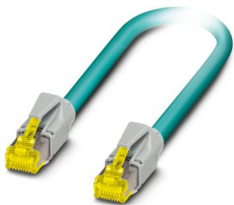


NBC-R4AC-R4AC-IE8A/.../... - Patch cable

1411854

<https://www.phoenixcontact.com/pc/products/1411854>

Patch cable, degree of protection: IP20, number of positions: 8, 10 Gbps, CAT6_A, cable outlet: straight, Ethernet



FL SWITCH 3012E-2FX SM - Industrial Ethernet Switch



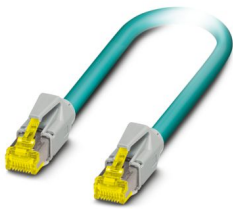
2891119

<https://www.phoenixcontact.com/pc/products/2891119>

NBC-R4AC/10G-R4AC/10G-94F/2,0 - Patch cable

1408360

<https://www.phoenixcontact.com/pc/products/1408360>

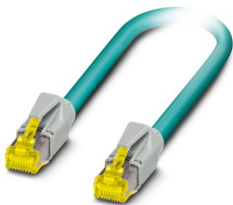


Patch cable, CAT6_A, 4-pair, shielded, connection not crossed (line), assembled at both ends with RJ45/IP20 connectors, outer sheath material: PUR, length: 2.0 m

NBC-R4AC/10G-R4AC/10G-94F/3,0 - Patch cable

1408365

<https://www.phoenixcontact.com/pc/products/1408365>



Patch cable, CAT6_A, 4-pair, shielded, connection not crossed (line), assembled at both ends with RJ45/IP20 connectors, outer sheath material: PUR, length: 3.0 m

FL SWITCH 3012E-2FX SM - Industrial Ethernet Switch



2891119

<https://www.phoenixcontact.com/pc/products/2891119>

NBC-R4AC/1,0-93B/R4AC - Patch cable

1408968

<https://www.phoenixcontact.com/pc/products/1408968>



Patch cable, degree of protection: IP20, cable length: 1 m, number of positions: 4, 100 Mbps, CAT5, material: PA 6.6, PROFINET

NBC-R4AC/2,0-93B/R4AC - Patch cable

1408969

<https://www.phoenixcontact.com/pc/products/1408969>



Patch cable, degree of protection: IP20, cable length: 2 m, number of positions: 4, 100 Mbps, CAT5, material: PA 6.6, PROFINET

FL SWITCH 3012E-2FX SM - Industrial Ethernet Switch



2891119

<https://www.phoenixcontact.com/pc/products/2891119>

NBC-R4AC/5,0-93B/R4AC - Patch cable

1408970

<https://www.phoenixcontact.com/pc/products/1408970>

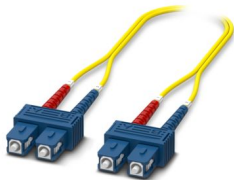


Patch cable, degree of protection: IP20, cable length: 5 m, number of positions: 4, 100 Mbps, CAT5, material: PA 6.6, PROFINET

FOC-SC:PA-SC:PA-OS2:D01/1 - FO patch cable

1115550

<https://www.phoenixcontact.com/pc/products/1115550>



Single-mode OS2 duplex jumper, SC-SC, UPC polishing, length 1 m

FL SWITCH 3012E-2FX SM - Industrial Ethernet Switch



2891119

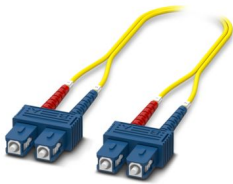
<https://www.phoenixcontact.com/pc/products/2891119>

FOC-SC:PA-SC:PA-OS2:D01/2 - FO patch cable

1115548

<https://www.phoenixcontact.com/pc/products/1115548>

Single-mode OS2 duplex jumper, SC-SC, UPC polishing, length 2 m

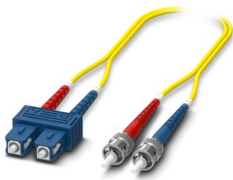


FOC-ST:PA-SC:PA-OS2:D01/1 - FO patch cable

1115582

<https://www.phoenixcontact.com/pc/products/1115582>

Single-mode OS2 duplex jumper, ST-SC, UPC polishing, length 1 m



FL SWITCH 3012E-2FX SM - Industrial Ethernet Switch



2891119

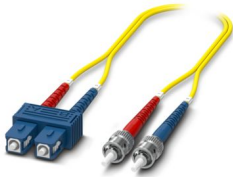
<https://www.phoenixcontact.com/pc/products/2891119>

FOC-ST:PA-SC:PA-OS2:D01/2 - FO patch cable

1115581

<https://www.phoenixcontact.com/pc/products/1115581>

Single-mode OS2 duplex jumper, ST-SC, UPC polishing, length 2 m

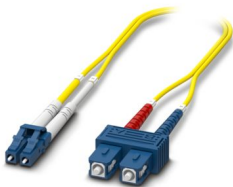


FOC-LC:PA-SC:PA-OS2:D01/1 - FO patch cable

1115618

<https://www.phoenixcontact.com/pc/products/1115618>

Single-mode OS2 duplex jumper, LC-SC, UPC polishing, length 1 m



FL SWITCH 3012E-2FX SM - Industrial Ethernet Switch



2891119

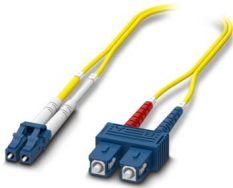
<https://www.phoenixcontact.com/pc/products/2891119>

FOC-LC:PA-SC:PA-OS2:D01/2 - FO patch cable

1115617

<https://www.phoenixcontact.com/pc/products/1115617>

Single-mode OS2 duplex jumper, LC-SC, UPC polishing, length 2 m



Phoenix Contact 2024 © - all rights reserved

<https://www.phoenixcontact.com>

PHOENIX CONTACT GmbH & Co. KG

Flachsmarktstraße 8

D-32825 Blomberg

+49 (0) 5235-3 00

info@phoenixcontact.com