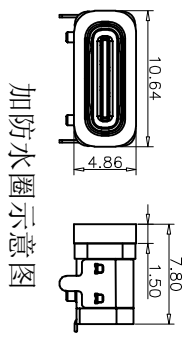
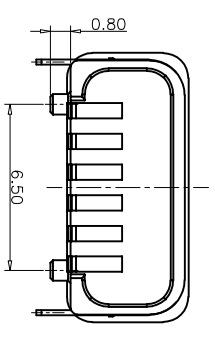
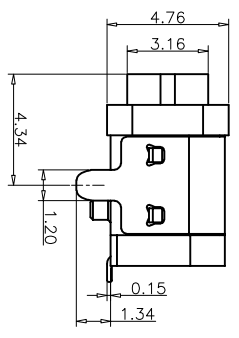
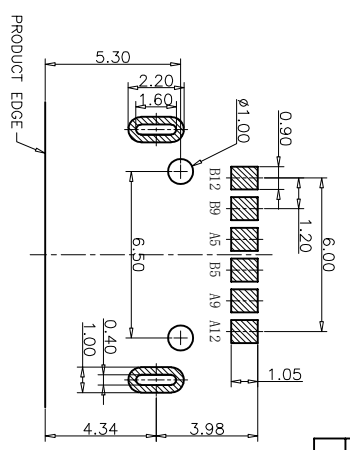
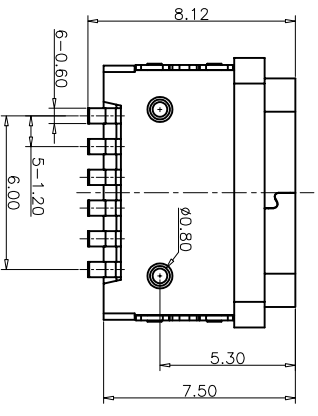
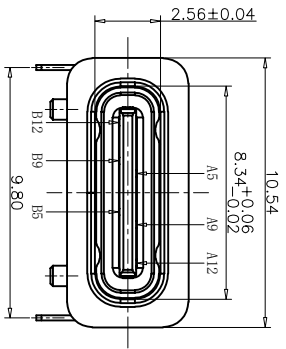
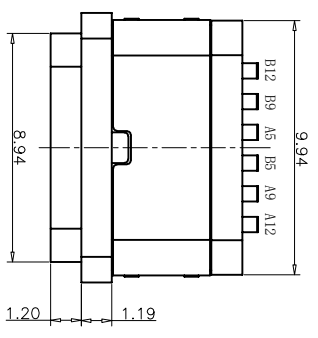


REV.	ECN NO.	DESCRIPTION	DATE	DESIGN



加防水圈示意图

RECOMMEND P.C.B LAYOUT(COMPONENT SIDE)
TOLERANCE FOR PCB LAYOUT IS ±0.05

- 备注 (NOTE):
1. 电气特性: 接触电阻40mΩ Max, 允许10mA变化量. 测试条件: 20mV, 100mA下测量.
 - 1.2. 接触电流: 3A VBUS引脚; 1.25A用于GND引脚; 其他引脚为0.25A.
 - 1.3. 额定电压: 5V.
 - 1.4. 耐受电压: 100VAC.
 - 1.5. 绝缘电阻: 至少100兆欧.
2. 机械性能:
- 3.1. 插入力: 0.5-2.0Kg
 - 3.2. 拔出力: 0.6-2.04Kg
 - 3.3. 插拔次数: 10000次.
 4. 工作环境: -20℃ to +85℃.

USB TYPE C PIN ASSIGNMENTS

PIN NUMBER	SIGNAL NAME	PIN NUMBER	SIGNAL NAME
B12	GND	B9	VBUS
A5	CC1	B5	CC2
A9	VBUS		
A12	GND		

TABLE:

NO	PART	QTY	Material
1	SHELL	1	STAINLESS STEEL, NI PLATED
2	CONTACT	6	COPPER STEEL, TIN/AU/NI PLATED
3	1MD HOUSING	1	HIGH TEMPERATURE RESISTANT PLASTIC BLACK UL94 V-0
4	2MD HOUSING	1	HIGH TEMPERATURE RESISTANT PLASTIC BLACK UL94 V-0
5	WATERPROOF RING	1	SILICONE UL94 V-0 RED

TOLERANCE		NAME (INTENDED USE)	
X.X ±0.30	X.X' ±10'	CUSTOMER DRAWING	
XX ±0.20	X.X' ± 8'	DRAWING NO. FY23-011TC61F175-02	
.XXX ±0.10	.XX' ± 5'	TITLE: CF 6P防水七级板上两脚7.5L	
UNITS	mm	DESIGN: ZXJM	
MATERIAL	---	CHED: ---	
FINISH	---	APPD: ---	



DRAWING NO. FY23-011TC61F175-02		SCALE SHEET REV.	
1:1		1/2 A	

