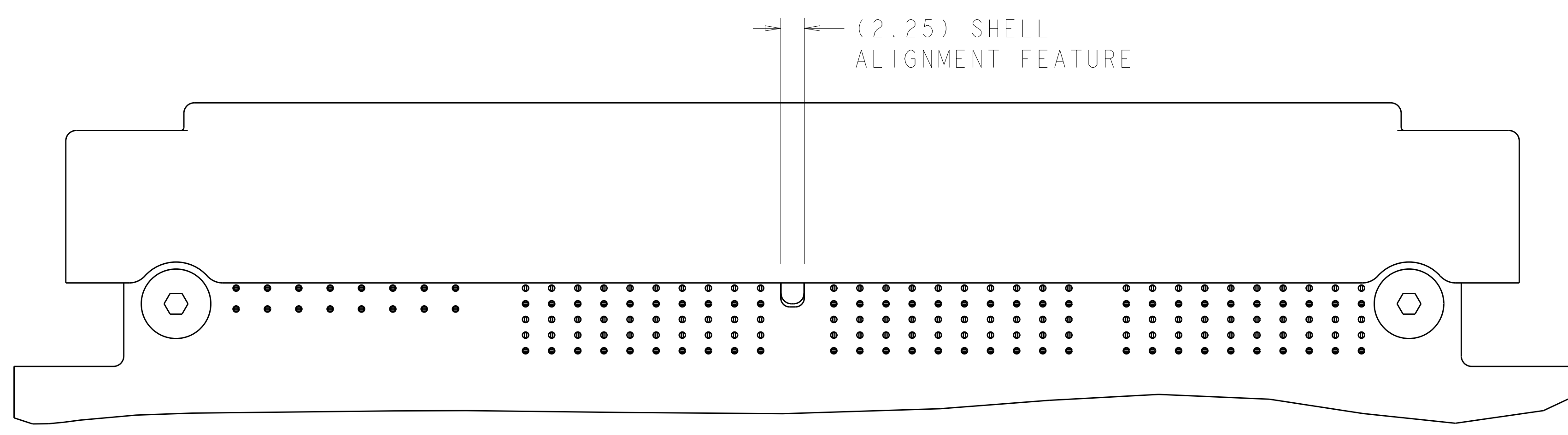
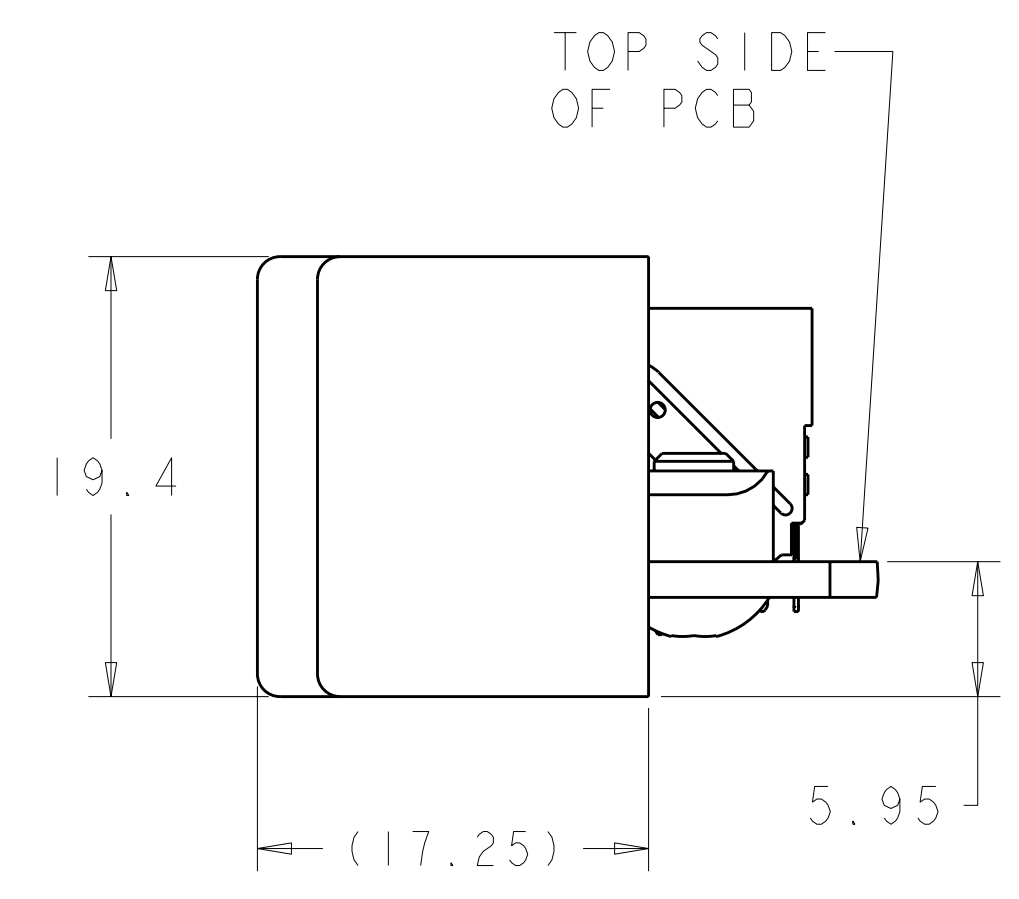
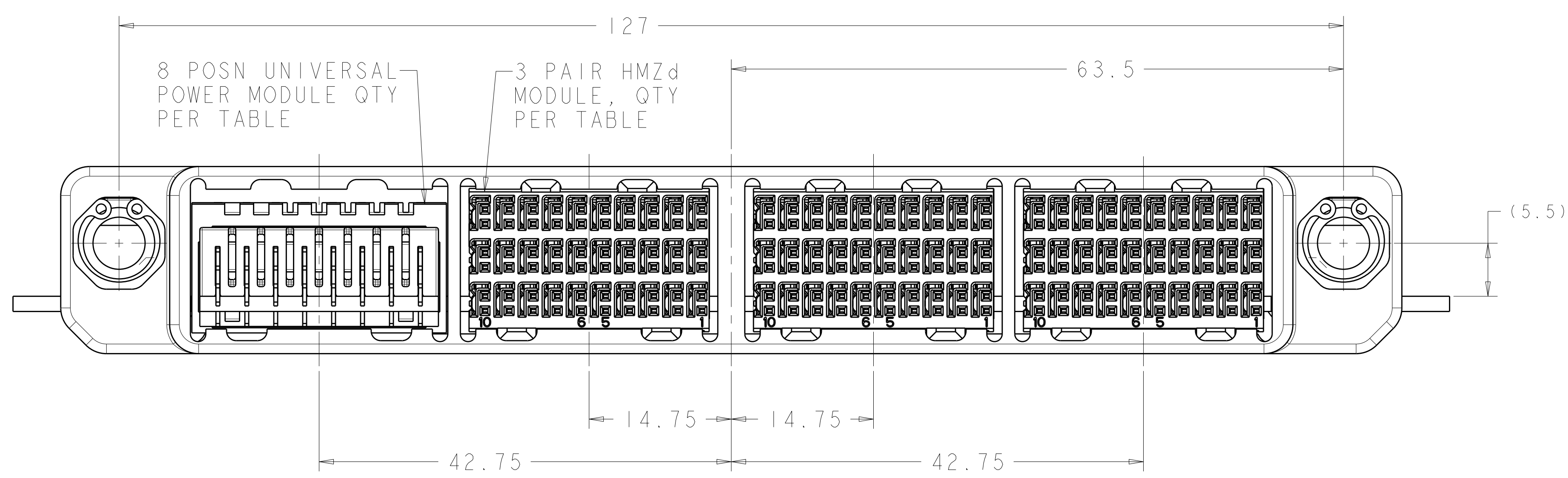
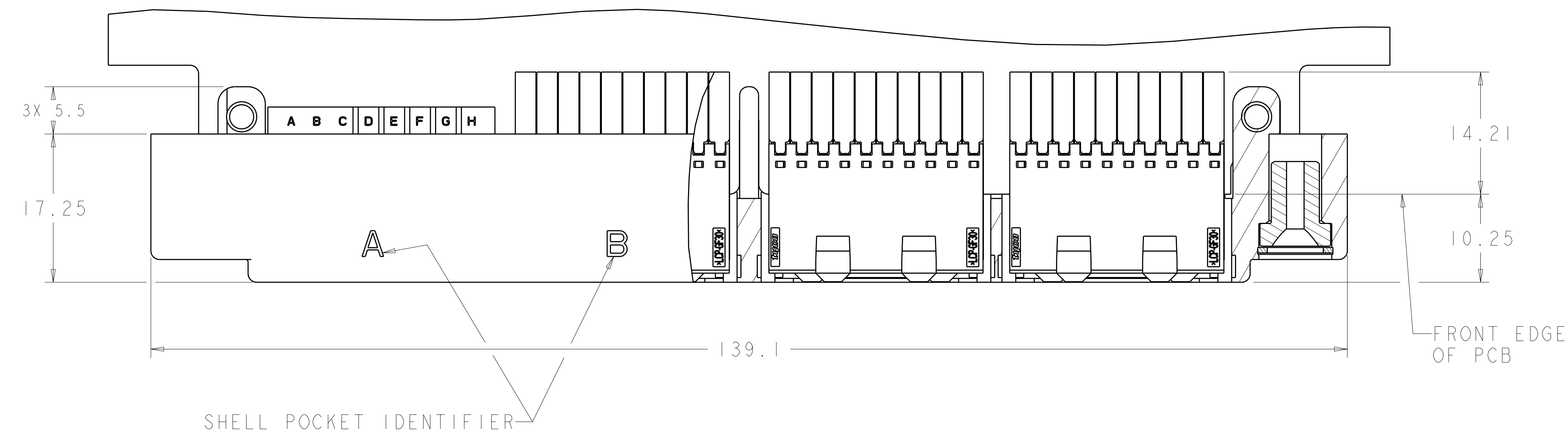


REVISIONS						
LOC	DIST	REV	DESCRIPTION	DATE	DWN	APVD
		D	REV PER ECO 11-004119	2-28-11	CT	DH

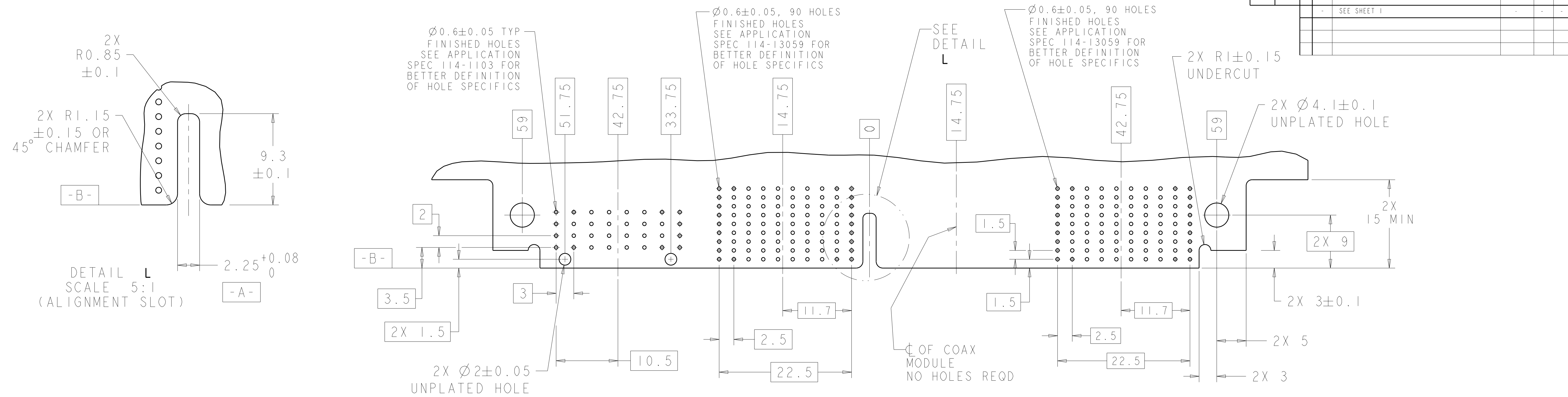


△	TIN-LEAD	1	-	1	2	2000667-5
△	--	--	-	-	-	2000667-4
	TIN-LEAD	--	-	1	3	2000667-3
	TIN	--	-	-	4	2000667-2
△	--	--	-	-	-	2000667-1
	TAIL PLATING	4 MT FIBER OPTIC MODULE	COAX	8 POSN UPM	3 PAIR HMZd	PART NUMBER
		MODULE QTY PER ASSY				

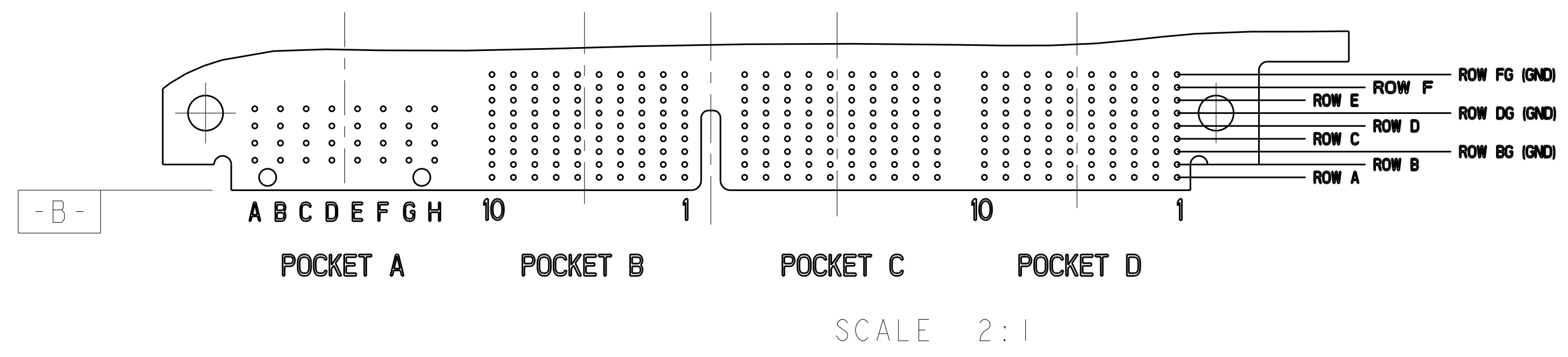
1. MATING CONNECTOR FOR THIS CONNECTOR IS 2000668.
 △ PRELIMINARY- NOT RELEASED FOR PRODUCTION.

DIMENSIONS:		TOLERANCES UNLESS OTHERWISE SPECIFIED:		DWN: Brent D. Yohn		Tyco Electronics	
mm		9 PLC ±.1		DATE: 11DEC2009		Harrisburg, PA 17105-3608	
Ø		1 PLC ±.1		CHK: HUNG T. NGUYEN		NAME: Daughters	
		2 PLC ±.1		APVD: CHONG YI		PRODUCT SPEC: HIGH SPEED RUGGEDIZED (HSR), 4 BAY, UNSEALED, RIGHT ANGLE	
		3 PLC ±.1		NAME: CHONG YI		APPLICATION SPEC:	
		4 PLC ±.1		SIZE: A11		CAGE CODE: 2000667	
		ANGLES		WEIGHT:		SCALE: 1:1	
		FINISH:		CUSTOMER DRAWING		SHEET 1 OF 2	
						REV D	

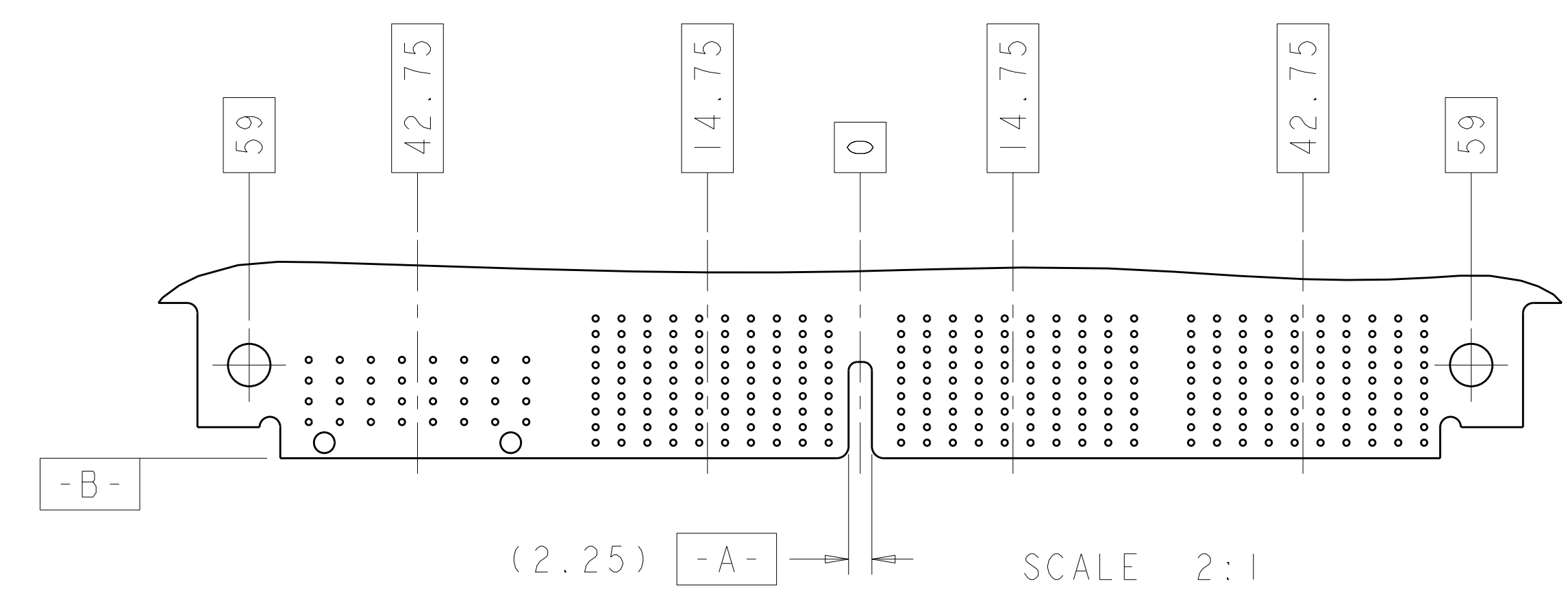
REVISONS		DATE	DWN	APVD
1	SEE SHEET 1	-	-	-



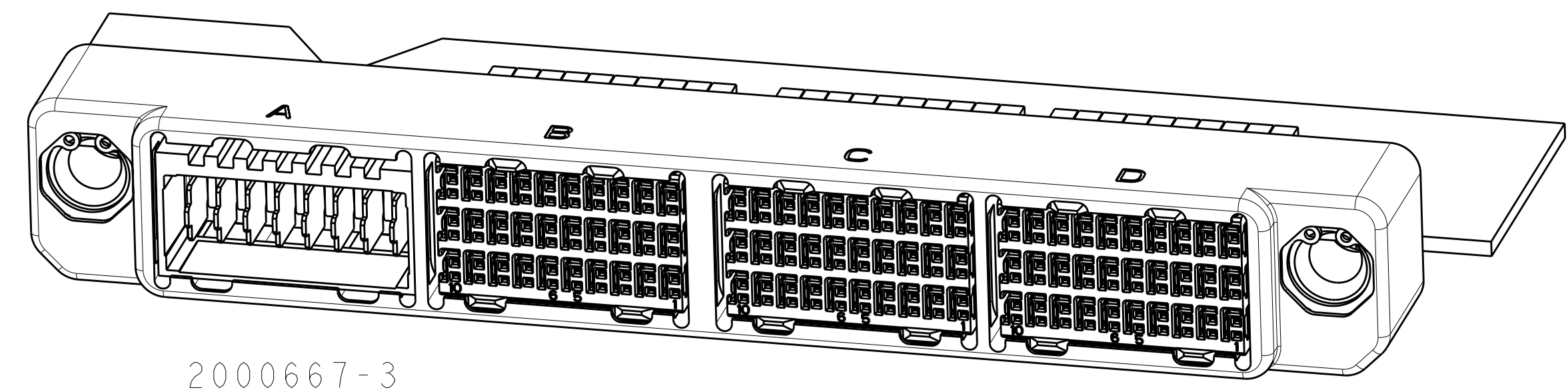
RECOMMENDED PC BOARD HOLE LAYOUT AS VIEWED FROM TOP OF PC BOARD NO SPECIFIC PART NUMBER SHOWN



SCALE 2:1



RECOMMENDED PC BOARD HOLE LAYOUT AS VIEWED FROM TOP OF PCB 2000667-3 SHOWN (3 HM-Zd MODULES AND 1 UPM MODULE)



2000667-3 SCALE 2:1

DIMENSIONS:		TOLERANCES UNLESS OTHERWISE SPECIFIED:		MATERIAL:		FINISH:	
mm	9 PLC	±	±				
	1 PLC	±	±				
	5 PLC	±	±				
	4 PLC	±	±				
	ANGLES						

DWN	Brent D. Yoehn	DATE	10DEC2009
CHK	HUNG T. NGUYEN	DATE	11DEC2009
APVD	CHONG YI	DATE	11DEC2009
NAME	DAUGHTER CARD CONNECTOR, HIGH SPEED RUGGEDIZED (HSR), 4 BAY, UNSEALED, RIGHT ANGLE		
PRODUCT SPEC	-		
APPLICATION SPEC	-		
SIZE	CAGE CODE	DRAWING NO	RESTRICTED TO
A	00779	C=2000667	-
CUSTOMER DRAWING		SCALE	1:1 SHEET 2 OF 2 REV D