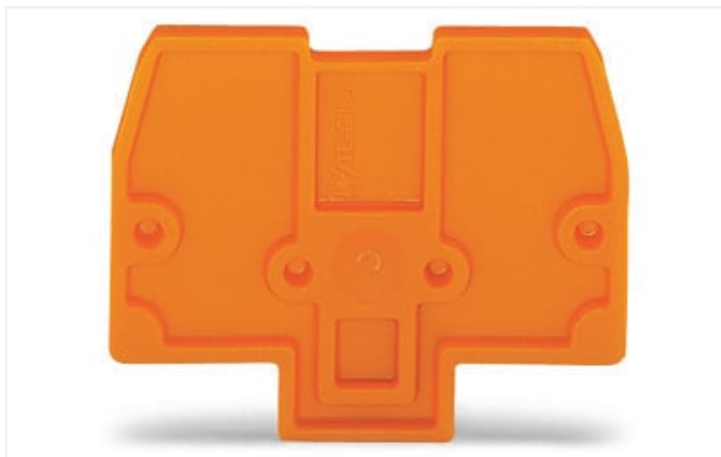


Data Sheet | Item Number: 870-923
End and intermediate plate; 2 mm thick; gray

<https://www.wago.com/870-923>



Color: ■ gray

Similar to illustration

Physical data

Width	2 mm / 0.079 inches
Height	33.4 mm / 1.315 inches
Depth	27.5 mm / 1.083 inches

Material data

Note (material data)	Information on material specifications can be found here
Color	gray
Material group	I
Insulation material	Polyamide (PA66)
Flammability class per UL94	V0
Fire load	0.032 MJ
Weight	1.1 g

Commercial data

Product Group	16 (Rail Mounted Terminal Blocks with CCC)
eCl@ss 10.0	27-14-11-33
eCl@ss 9.0	27-14-11-33
ETIM 8.0	EC000886
ETIM 7.0	EC000886
PU (SPU)	100 (25) pcs
Packaging type	Box
Country of origin	CN
GTIN	4017332529662
Customs tariff number	85389099990

Environmental Product Compliance

RoHS Compliance Status	Compliant, No Exemption
------------------------	-------------------------

Downloads

Environmental Product Compliance

Compliance Search	
Environmental Product Compliance 870-923	↓

Documentation

Additional Information		
Technical Section	pdf 2240.62 KB	↓

Bid Text				
870-923	19.02.2019	xml 2.51 KB	↓	
870-923	31.05.2017	doc 23.50 KB	↓	

CAD/CAE-Data

CAD data	
2D/3D Models 870-923	↓

CAE data	
EPLAN Data Portal 870-923	↓
WSCAD Universe 870-923	↓
ZUKEN Portal 870-923	↓