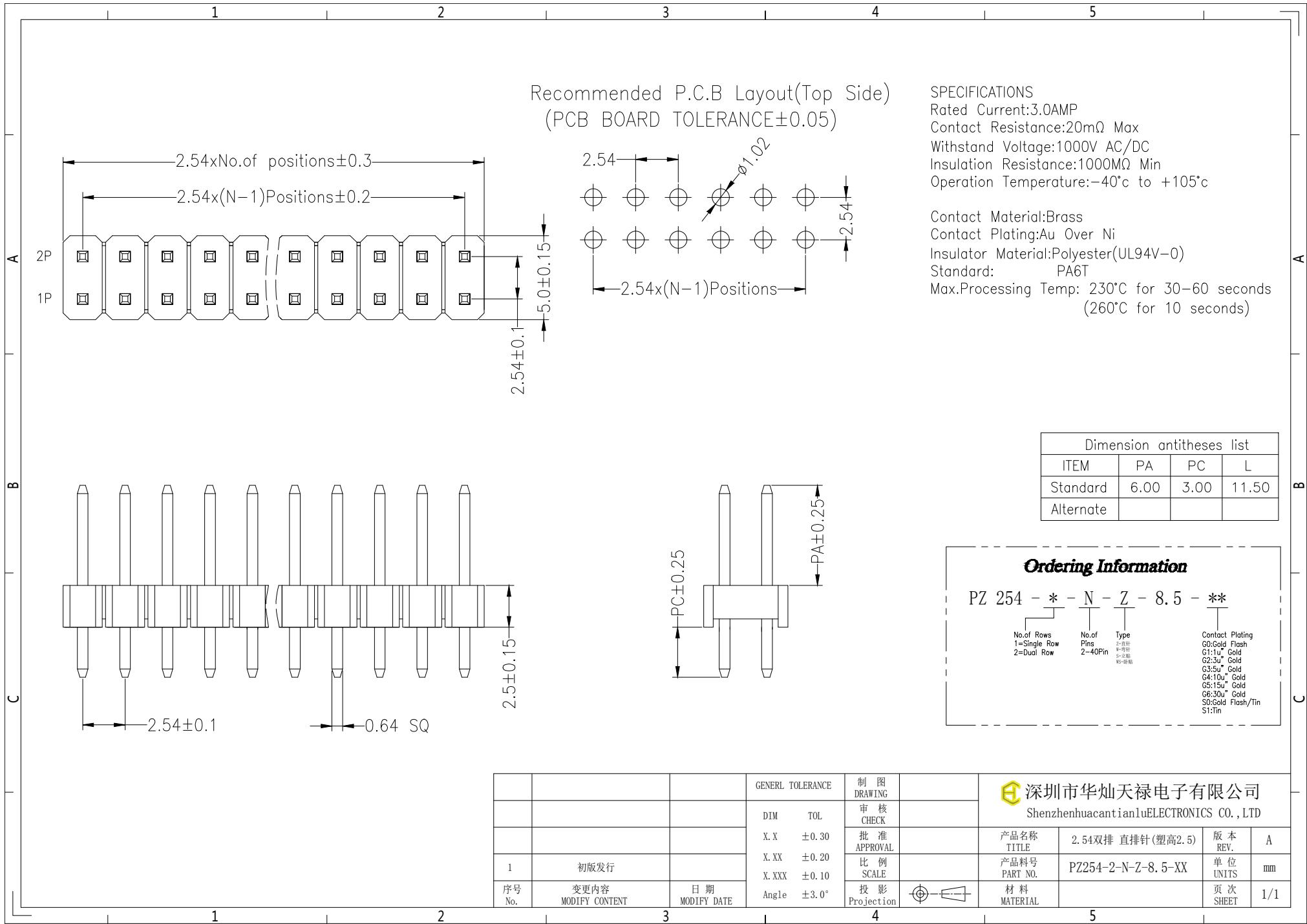


Recommended P.C.B Layout(Top Side)
(PCB BOARD TOLERANCE±0.05)

SPECIFICATIONS
 Rated Current:3.0AMP
 Contact Resistance:20mΩ Max
 Withstand Voltage:1000V AC/DC
 Insulation Resistance:1000MΩ Min
 Operation Temperature:-40°c to +105°c

Contact Material:Brass
 Contact Plating:Au Over Ni
 Insulator Material:Polyester(UL94V-0)
 Standard: PA6T
 Max.Processing Temp: 230°C for 30-60 seconds
 (260°C for 10 seconds)



Dimension antitheses list			
ITEM	PA	PC	L
Standard	6.00	3.00	11.50
Alternate			

Ordering Information

PZ 254 - * - N - Z - 8.5 - **

No. of Rows
 1=Single Row
 2=Dual Row

No. of Pins
 2-40Pin

Type
 Z-直插
 S-贴片
 W-弯插

Contact Plating
 G0:Gold Flash
 G1:1u" Gold
 G2:3u" Gold
 G3:5u" Gold
 G4:10u" Gold
 G5:15u" Gold
 G6:30u" Gold
 S0:Gold Flash/Tin
 S1:Tin

			GENERAL TOLERANCE		制图 DRAWING		深圳市华灿天禄电子有限公司 ShenzhenhuacantianluELECTRONICS CO., LTD			
			DIM	TOL	审核 CHECK		产品名称 TITLE	2.54双排 直插针(塑高2.5)	版本 REV.	A
			X. X	±0.30	批准 APPROVAL		产品料号 PART NO.	PZ254-2-N-Z-8.5-XX	单位 UNITS	mm
			X. XX	±0.20	比例 SCALE		材料 MATERIAL		页次 SHEET	1/1
			X. XXX	±0.10	投影 Projection					
序号 No.	变更内容 MODIFY CONTENT	日期 MODIFY DATE	Angle	±3.0°						