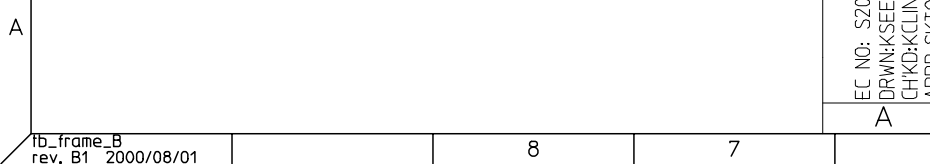


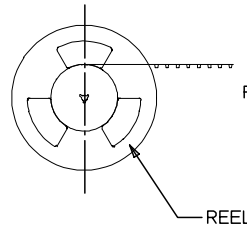
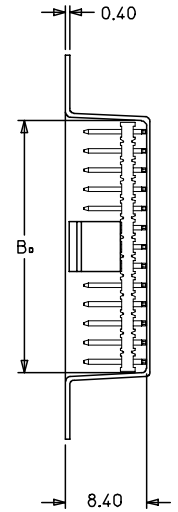
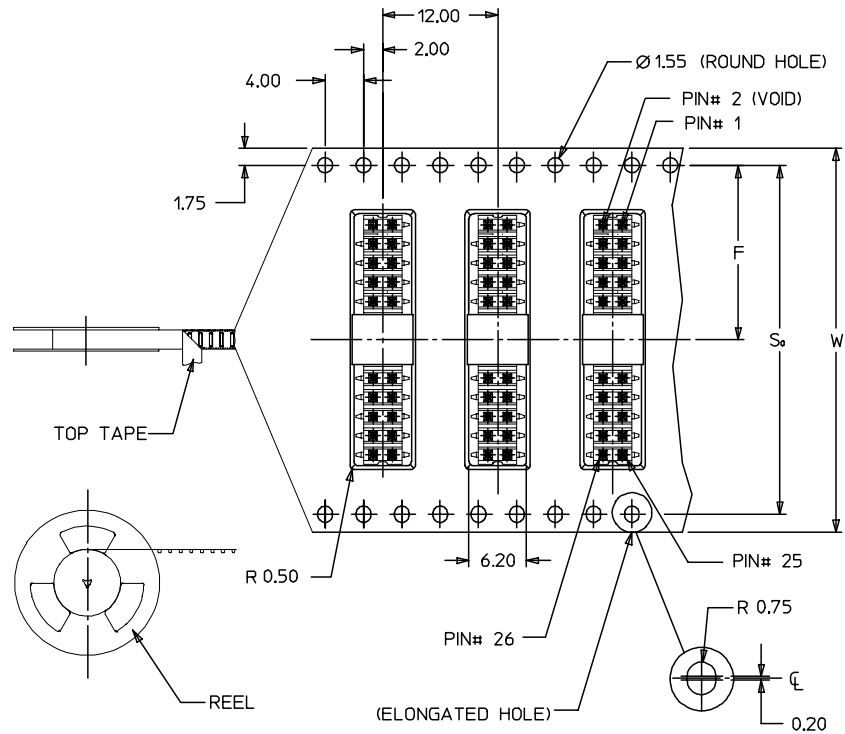
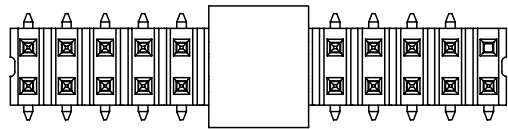
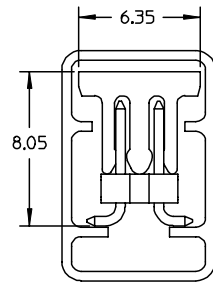
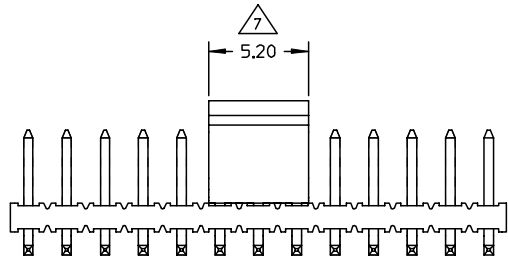
NOTE:

- 1. MATERIAL: HSG & CAP - HIGH TEMPERATURE THERMOPLASTIC, UL 94V-0, COLOUR BLACK
PIN - 0.50 SQ PHOSPHOR BRONZE
- 2. PLATING: 0.38um MIN GOLD PLATE AT CONTACT AREA, TIN PLATE AT SOLDER AREA, BOTH OVER NICKEL UNDERPLATE
- 3. PIN PUSHOUT FORCE: 1KG MIN IN EITHER DIRECTION
- 4. PRODUCT SPEC PS-87761-100 APPLIES.
- 5. BEND DEPRESSION IS ACCEPTABLE SO LONG AS IT DOES NOT AFFECT THE OVERALL COPLANARITY OF TAIL.
- 6. COPLANARITY IS TO BE MEASURED BY RESTING THE SOLDER TAIL ON A GAUGE SURFACE.
- 7. CAP TO BE LOCATED AS CENTRAL OF PART AS POSSIBLE TOP SURFACE OF CAP TO BE FLAT FOR THE PURPOSE OF PICK & PLACE BY VACUUM SUCTION NOZZLE.
- 8. TUBE LENGTH IS 560MM REF STANDARD.

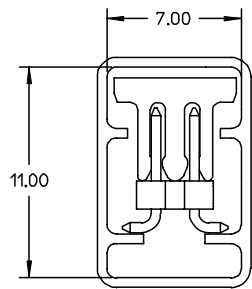
RECOMMENDED PCB LAYOUT



EC NO: S2004-0293 DRWN:KSEE 2004/01/30 CHKD:KCLING 2004/01/30 APPR:SKTOH 2004/02/05	DESCRIPTION	QUALITY SYMBOLS	GENERAL TOLERANCES (UNLESS SPECIFIED)		SCALE NTS	DESIGN UNITS METRIC	THIRD ANGLE PROJECTION	REVISE ON CAD ONLY	
		▽=0 ∇=0		mm	INCH				
A	REV	4 PLACES	±---	±---	DIMENSION STYLE MM ONLY		TITLE SALES DRAWING MGRID 2MM DUAL ROW SMT HDR IN TUBE WITH VOID		
		3 PLACES	±---	±---	DRAWN BY KSEE	DATE 2003/12/24			
		2 PLACES	±0.2	±---	CHECKED BY KCLING	DATE 2004/01/12	MATERIAL NO. SEE TABLE DOCUMENT NO. SD-87759-119 SHEET NO. 1 OF 4		
		1 PLACE	±---	±---	APPROVED BY SKTOH	DATE 2004/01/12			
		ANGULAR ± 3°			DRAFT WHERE APPLICABLE		MATERIAL NO. SEE TABLE DOCUMENT NO. SD-87759-119 SHEET NO. 1 OF 4		
		MUST REMAIN WITHIN DIMENSIONS			THIS DRAWING CONTAINS INFORMATION THAT IS PROPRIETARY TO MOLEX INCORPORATED AND SHOULD NOT BE USED WITHOUT WRITTEN PERMISSION				



PULL OUT DIRECTION (CUSTOMER)
TAPE & REEL ORIENTATION →



PART WITH CAP IN
TUBE ORIENTATION

EC NO: S2004-0293 DRWN:KSEE 2004/01/30 CHKD:KCLING 2004/01/30 APPR:SKTOH 2004/02/05	QUALITY SYMBOLS ▼ = 0 ▽ = 0	GENERAL TOLERANCES (UNLESS SPECIFIED)		SCALE NTS	DESIGN UNITS METRIC	THIRD ANGLE PROJECTION	REVISE ON CAD ONLY
		mm	INCH	DIMENSION STYLE MM ONLY		TITLE SALES DRAWING MGRID 2MM DUAL ROW SMT HDR IN TUBE WITH VOID	
A	DESCRIPTION	4 PLACES	± ---	± ---	DRAWN BY KSEE	DATE 2003/12/24	MATERIAL NO. SEE TABLE
		3 PLACES	± ---	± ---	CHECKED BY KCLING	DATE 2004/01/12	
		2 PLACES	± 0.2	± ---	APPROVED BY SKTOH	DATE 2004/01/12	SHEET NO. 2 OF 4
		1 PLACE	± ---	± ---	THIS DRAWING CONTAINS INFORMATION THAT IS PROPRIETARY TO MOLEX INCORPORATED AND SHOULD NOT BE USED WITHOUT WRITTEN PERMISSION		
		ANGULAR ± 3 °		DRAFT WHERE APPLICABLE		MUST REMAIN WITHIN DIMENSIONS	

10

9

8

7

6

5

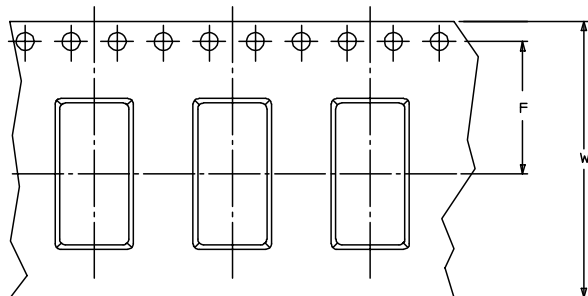
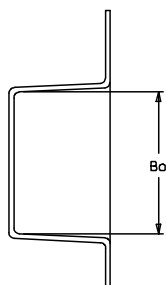
4

3

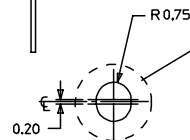
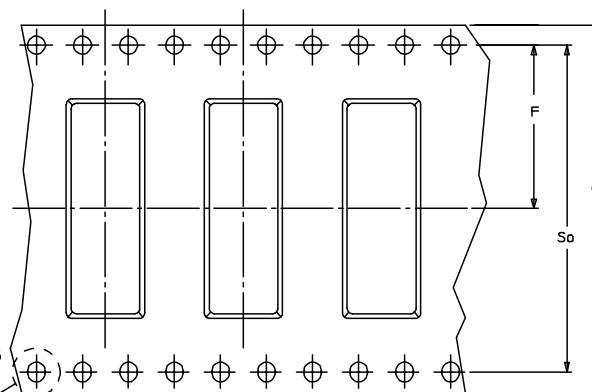
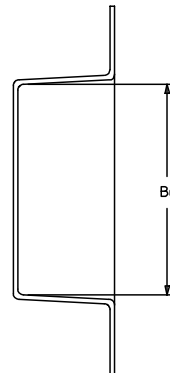
2

87759

EMBOSED CARRIER TAPE TYPE 'A'



EMBOSED CARRIER TAPE TYPE 'B'



EC NO: S2004-0293 DRWN:KSEE 2004/01/30 CHKD:KCLING 2004/01/30 APPR:SKTOH 2004/02/05	QUALITY SYMBOLS ▽ = 0 ◻ = 0	GENERAL TOLERANCES (UNLESS SPECIFIED)		SCALE NTS	DESIGN UNITS METRIC	THIRD ANGLE PROJECTION	REVISE ON CAD ONLY
		4 PLACES ± --- ± --- 3 PLACES ± --- ± --- 2 PLACES ± 0.2 ± --- 1 PLACE ± --- ± ---	DIMENSION STYLE MM ONLY	TITLE SALES DRAWING MGRID 2MM DUAL ROW SMT HDR IN TUBE WITH VOID			
		ANGULAR ± 3 °	DRAWN BY KSEE	DATE 2003/12/24	MOLEX INCORPORATED		
		DRAFT WHERE APPLICABLE MUST REMAIN WITHIN DIMENSIONS	CHECKED BY KCLING	DATE 2004/01/12	MATERIAL NO. SEE TABLE	DOCUMENT NO. SD-87759-119	SHEET NO. 3 OF 4
A	REV	THIS DRAWING CONTAINS INFORMATION THAT IS PROPRIETARY TO MOLEX INCORPORATED AND SHOULD NOT BE USED WITHOUT WRITTEN PERMISSION					B

8

7

6

5

4


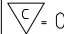
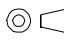
3

2

1

87759

PART NUMBER WITH CAP IN TUBE	PART NUMBER WITH CAP IN TAPE AND REEL.	CKT SIZE	VOID CKT	A	B	Bo	F	So	W	EMBOSSSED TYPE
87759-8011	87759-8010	26	2	25.90	24.00	26.20	20.20	40.40	44.00	B

EC NO: S2004-0293 DRWN:KSEE 2004/01/30 CHKD:KCLING 2004/01/30 APPR:SKTOH 2004/02/05	QUALITY SYMBOLS  = 0  = 0	GENERAL TOLERANCES (UNLESS SPECIFIED)		SCALE NTS	DESIGN UNITS METRIC	 THIRD ANGLE PROJECTION	REVISE ON CAD ONLY	
		4 PLACES	± ---	± ---	DIMENSION STYLE MM ONLY		TITLE SALES DRAWING MGRID 2MM DUAL ROW SMT HDR IN TUBE WITH VOID	
		3 PLACES	± ---	± ---	DRAWN BY KSEE	DATE 2003/12/24	APPROVED BY KCLING	
		2 PLACES	± 0.2	± ---	CHECKED BY KCLING	DATE 2004/01/12	MATERIAL NO. SEE TABLE	
1 PLACE	± ---	± ---	ANGULAR ± 3 °		DATE 2004/01/12	DOCUMENT NO. SD-87759-119	SHEET NO. 4 OF 4	
DRAFT WHERE APPLICABLE MUST REMAIN WITHIN DIMENSIONS		THIS DRAWING CONTAINS INFORMATION THAT IS PROPRIETARY TO MOLEX INCORPORATED AND SHOULD NOT BE USED WITHOUT WRITTEN PERMISSION						