

# 4525DO-SS3AS015AP ✓ ACTIVE

MEAS | MEAS MS4525DO

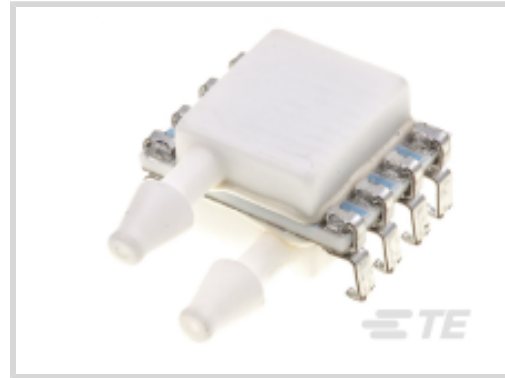
TE Internal #: 4525DO-SS3AS015AP

Digital Pressure and Altimeter Sensor Modules, Absolute, 1.034 bar [15 psi], 14 bit ADC, ±0.25% Span Pressure Accuracy, MEAS MS4525DO

[View on TE.com >](#)



Sensors > Pressure Sensors > Board Mount Pressure Sensors > PCB MOUNTED DIGITAL PRESSURE SENSOR



Pressure Sensor Type: **Digital Pressure and Altimeter Sensor Modules**

Pressure Type: **Absolute**

Proof Pressure Range: **15 psi**

Pressure: **1.034 bar [ 15 psi ]**

Output Signal Type: **14 bit ADC**

## Features

### Product Type Features

Sensor Package	8 pin DIL
Leg Style	Through Hole
Pressure Sensor Type	Digital Pressure and Altimeter Sensor Modules
Pressure Type	Absolute

### Electrical Characteristics

Supply Voltage Range	3.3 V
----------------------	-------

### Dimensions

Product Width	17.4 mm[.685 in]
Product Length	12.7 mm[.5 in]
Product Height	11.7 mm[.46 in]

### Usage Conditions

Pressure	1.034 bar[15 psi]
Operating Temperature Range	-25 – 105 °C[-13 – 221 °F]

### Operation/Application

Output Interface	I <sup>2</sup> C or SPI
Proof Pressure Range	15 psi



Output Signal Type	14 bit ADC
Pressure Accuracy	±0.25% Span

**Other**

Sensor Options	No Option
----------------	-----------

**Product Compliance**

[For compliance documentation, visit the product page on TE.com>](#)

EU RoHS Directive 2011/65/EU	Compliant
EU ELV Directive 2000/53/EC	Compliant
China RoHS 2 Directive MIIT Order No 32, 2016	No Restricted Materials Above Threshold
EU REACH Regulation (EC) No. 1907/2006	Current ECHA Candidate List: JUNE 2024 (241) Candidate List Declared Against: JAN 2024 (240) Does not contain REACH SVHC
Halogen Content	Not Yet Reviewed for halogen content
Solder Process Capability	Not reviewed for solder process capability

**Product Compliance Disclaimer**

This information is provided based on reasonable inquiry of our suppliers and represents our current actual knowledge based on the information they provided. This information is subject to change. The part numbers that TE has identified as EU RoHS compliant have a maximum concentration of 0.1% by weight in homogenous materials for lead, hexavalent chromium, mercury, PBB, PBDE, DBP, BBP, DEHP, DIBP, and 0.01% for cadmium, or qualify for an exemption to these limits as defined in the Annexes of Directive 2011/65/EU (RoHS2). Finished electrical and electronic equipment products will be CE marked as required by Directive 2011/65/EU. Components may not be CE marked. Additionally, the part numbers that TE has identified as EU ELV compliant have a maximum concentration of 0.1% by weight in homogenous materials for lead, hexavalent chromium, and mercury, and 0.01% for cadmium, or qualify for an exemption to these limits as defined in the Annexes of Directive 2000/53/EC (ELV). Regarding the REACH Regulation, the information TE provides on SVHC in articles for this part number is based on the latest European Chemicals Agency (ECHA) 'Guidance on requirements for substances in articles' posted at this URL: <https://echa.europa.eu/guidance-documents/guidance-on-reach>

**Compatible Parts**



Also in the Series | **MEAS MS4525DO**

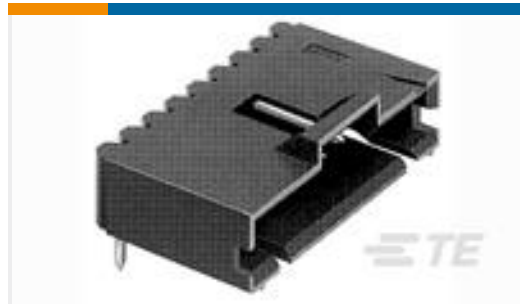


Board Mount Pressure Sensors(70)

## Customers Also Bought



TE Part #6-534237-3  
15 MODII VRT SR CE 100/115



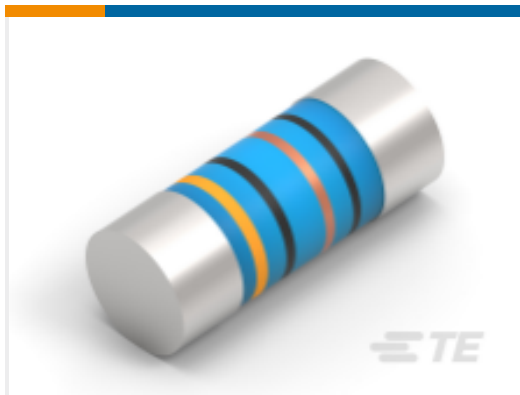
TE Part #5-103635-6  
07 MTE HDR SRRA LTCH.100CL LF



TE Part #2040305-1  
INDUSTRIAL USB PLUG KIT BULK  
PACK STYLE



TE Part #8-2176404-1  
3550 6R8 5%



TE Part #2-2176316-1  
MELF SMA\_A 4K7 0.1% 15PPM 0207  
1W



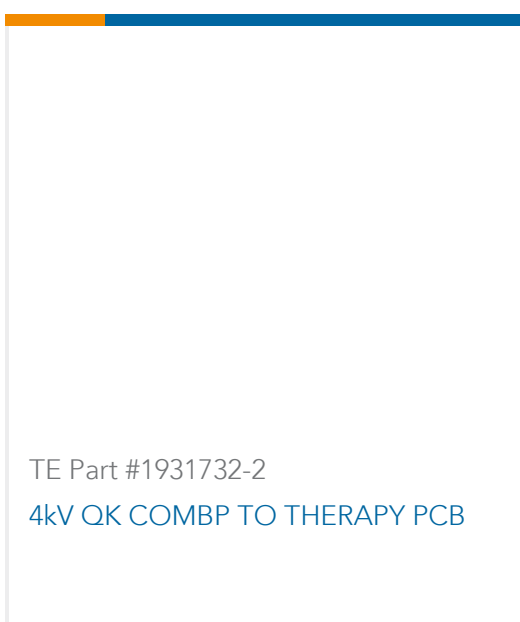
TE Part #001-0012  
ANTENNA,2,4/5.5 GHz Dipole,IP67



TE Part #080-0014  
CABLE,U.FL to SMA Bulkhd 1.13mm  
Dia,210m



TE Part #1931718-2  
WIRE HARNESS-INVASIVE PRESSURE



TE Part #1931732-2  
4kV QK COMBP TO THERAPY PCB

## Documents

### CAD Files

Customer View Model

[ENG\\_CVM\\_CVM\\_4525DO-SS3AS015AP\\_D.3d\\_stp.zip](#)

English

Customer View Model

[ENG\\_CVM\\_CVM\\_4525DO-SS3AS015AP\\_D.2d\\_dxf.zip](#)

English

Customer View Model

[ENG\\_CVM\\_CVM\\_4525DO-SS3AS015AP\\_D.3d\\_igs.zip](#)



English

[3D PDF](#)

3D

By downloading the CAD file I accept and agree to the [Terms and Conditions](#) of use.

---

## Datasheets & Catalog Pages

[Data sheet](#)

English

---

## Product Specifications

[MS45xx Series Surface Models](#)

English