



TAI-SAW TECHNOLOGY CO., LTD.

No. 3, Industrial 2nd Rd., Ping-Chen Industrial District,
Taoyuan, 324, Taiwan, R.O.C.

TEL: 886-3-4690038 FAX: 886-3-4697532

E-mail: tstsales@mail.taisaw.com Web: www.taisaw.com

Product Specifications Approval Sheet

Product Name: SAW Filter 454MHz 32MHz BW SMD 3.8×3.8mm

TST Parts No.: TA1705A

Customer Parts No.: _____

Company: _____

Division: _____

Approved by : _____

Date: _____

Checked by: _____ Andy Yu 

Approval by: _____ Bob Chau 

Date: _____ 2014/01/03

1. Customer signed back is required before TST can proceed with sample build and receive orders.
2. Orders received without customer signed back will be regarded as agreement on the specifications.
3. Any specifications changes must be approved upon by both parties and a new revision of specifications shall be released to reflect the change.



TAI-SAW TECHNOLOGY CO., LTD.

No. 3, Industrial 2nd Rd., Ping-Chen Industrial District,
Taoyuan, 324, Taiwan, R.O.C.

TEL: 886-3-4690038 FAX: 886-3-4697532

E-mail: tstsales@mail.taisaw.com Web: www.taisaw.com

SAW Filter 454 MHz 32MHz BW SMD 3.8x3.8mm

MODEL NO.:TA1705A

REV. NO.:1.0

A. MAXIMUM RATING:

1. Input Power Level: 10 dBm
2. DC Voltage : 5V
3. Operating Temperature: -30°C to +70°C
4. Storage Temperature: -40°C to +85°C

RoHS Compliant
Lead free
Lead-free soldering

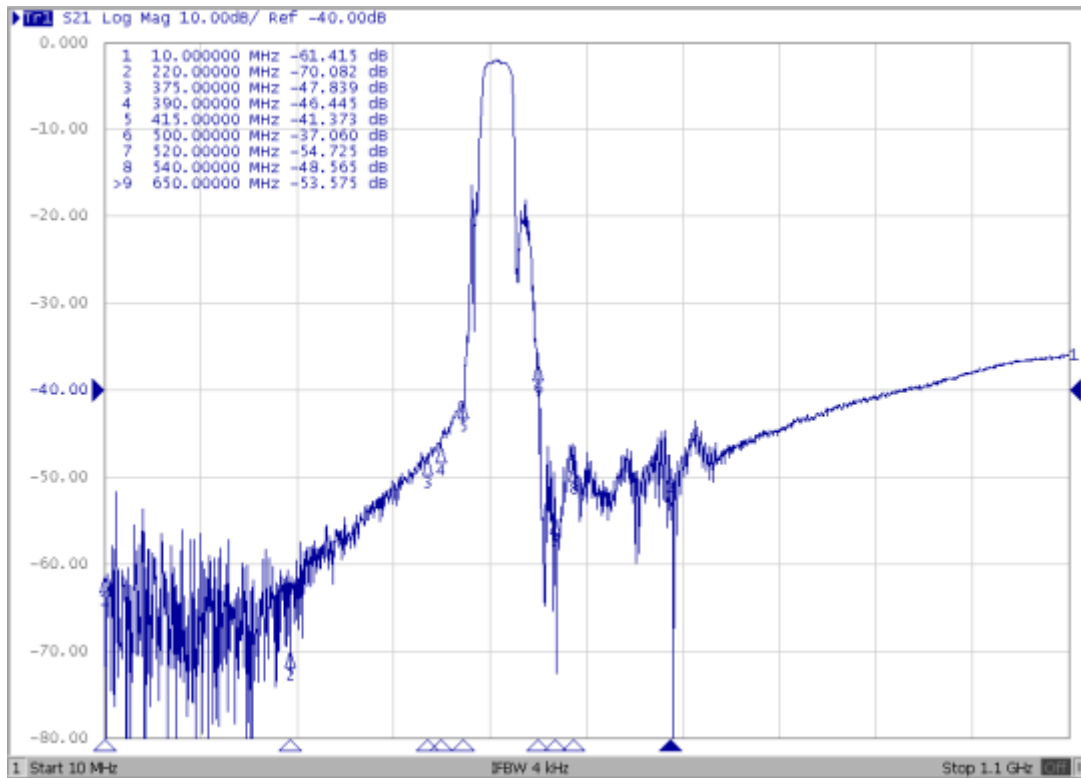
Electrostatic Sensitive Device (ESD)

B. ELECTRICAL CHARACTERISTICS:

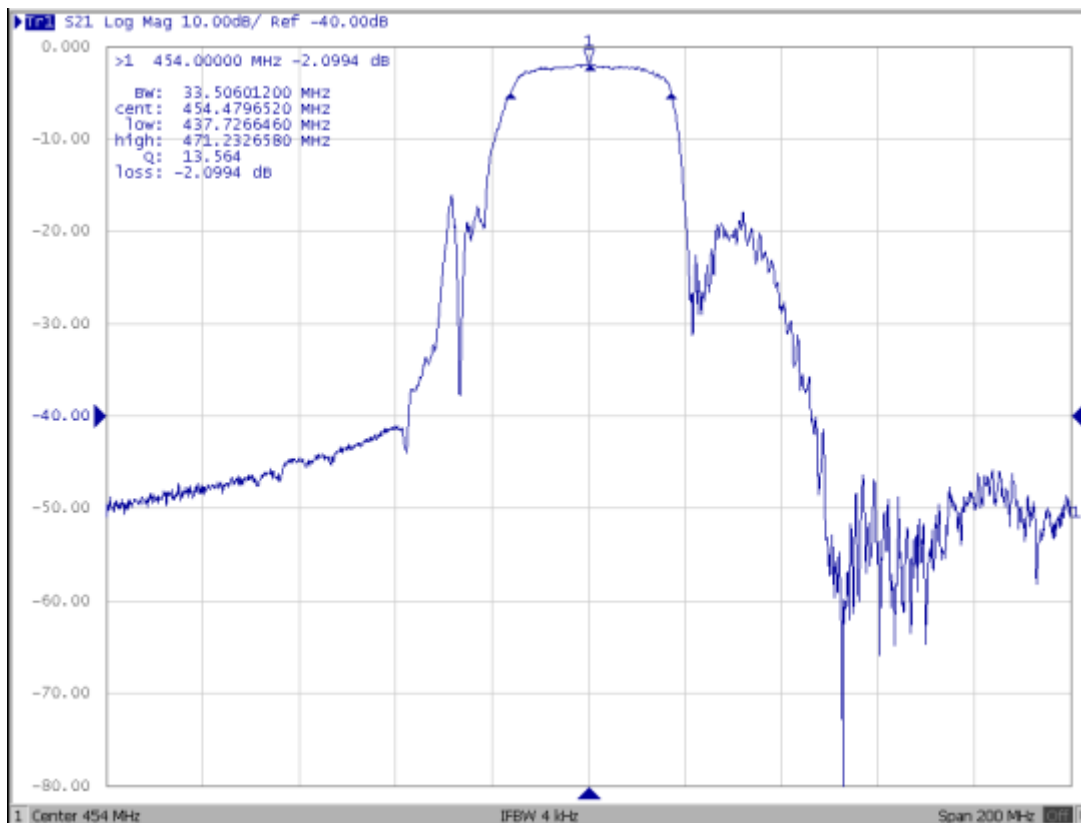
Item	Unit	Min.	Typ.	Max.
Center frequency Fc	MHz	-	454	-
3dB Bandwidth	MHz	-	33.5	-
Max Insertion loss	dB	-	2.0	3.3
Attenuation (reference from 0dB)				
10 ~ 220 MHz	dB	35	54	-
220 ~ 375 MHz	dB	30	47	-
375 ~ 390 MHz	dB	25	45	-
390 ~ 415 MHz	dB	15	40	-
500 ~ 520 MHz	dB	15	37	-
520 ~ 540 MHz	dB	25	45	-
540 ~ 650 MHz	dB	30	44	-
650 ~ 850 MHz	dB	27	40	-
850 ~ 1100 MHz	dB	25	34	-
Source impedance Z _S	Ω	-	50	-
Load impedance Z _L	Ω	-	50	-

C. FREQUENCY CHARACTERISTICS:

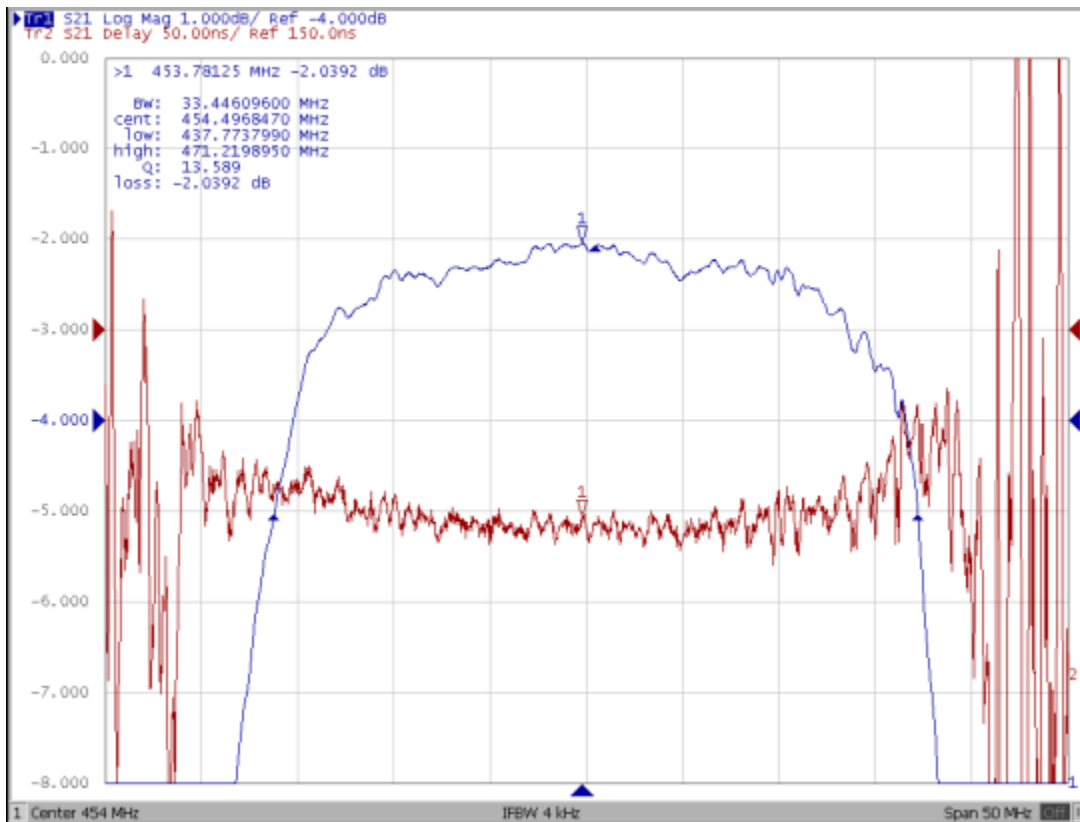
Wideband response: (span 1090MHz)



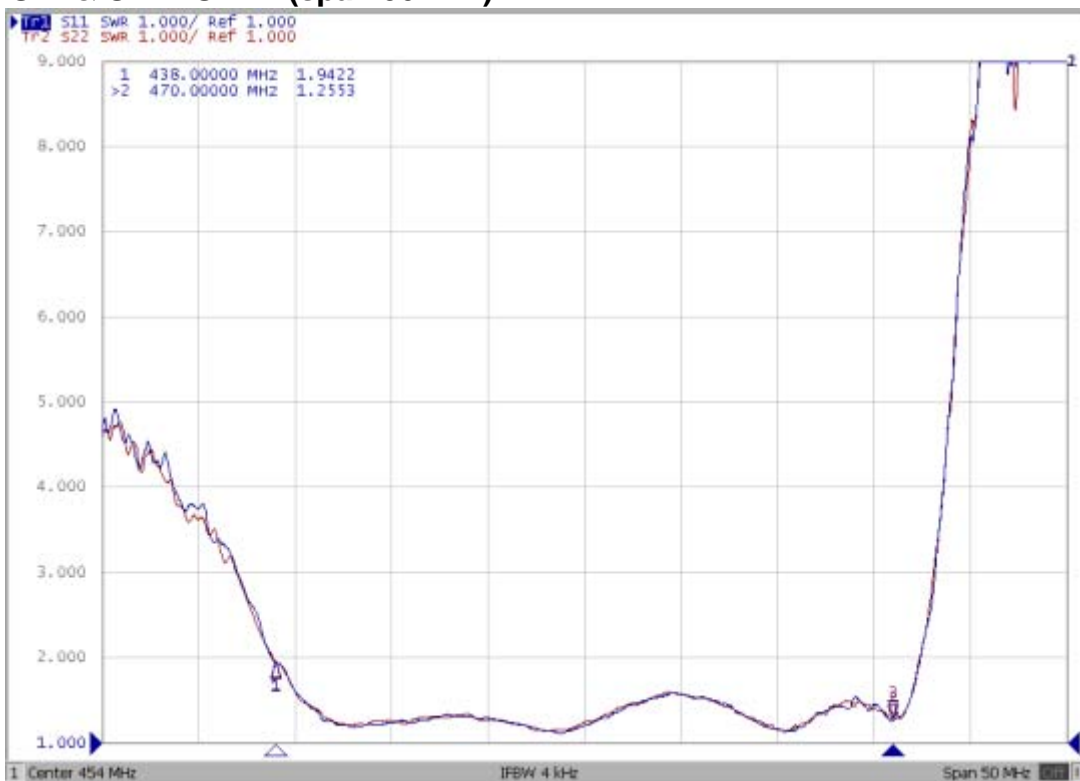
S21 response: (span 200MHz)



Passband response: (span 50MHz)

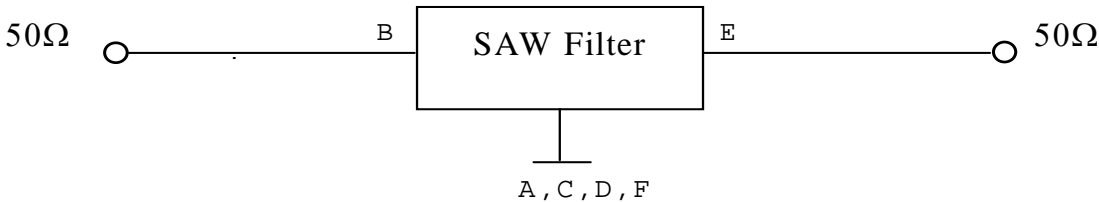


S11 & S22 VSWR: (span 50MHz)

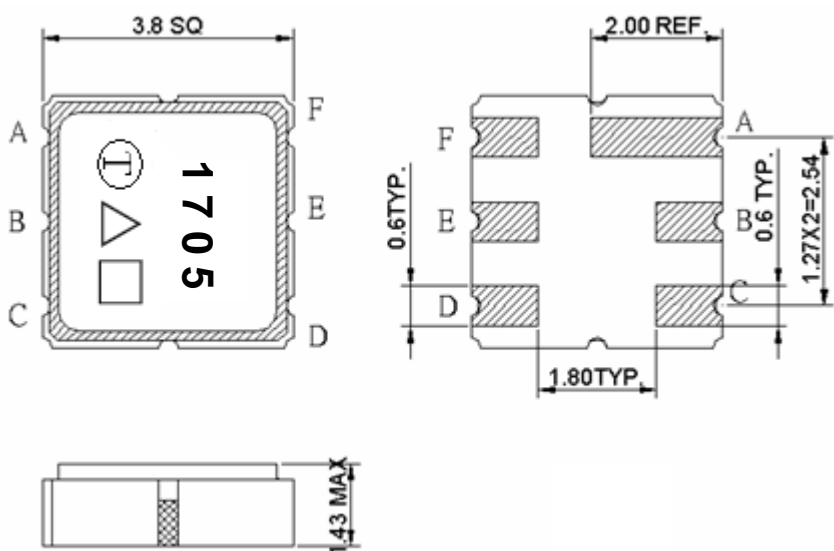


D. MEASUREMENT CIRCUIT:

HP Network analyzer



E. OUTLINE DRAWING:

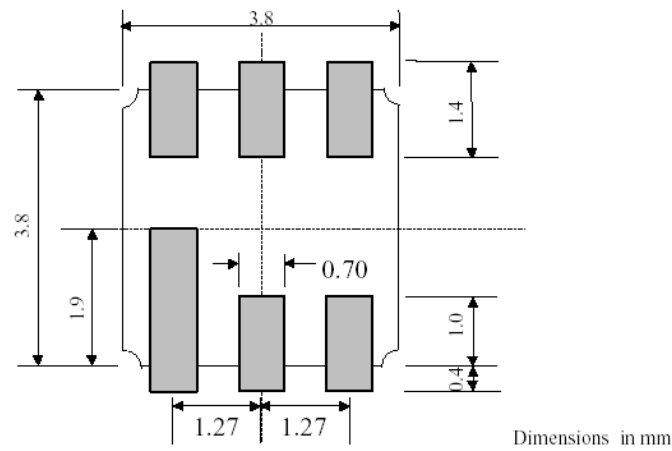


B : Input
E: Output
A,C,D,F Ground
△:Year Code
□: Date Code(Follow the table provided by planner each year.)
Unit: mm

△ Product Year Code

Year	2011	2012
	2013	2014
	2015	2016
Product Code	A	a

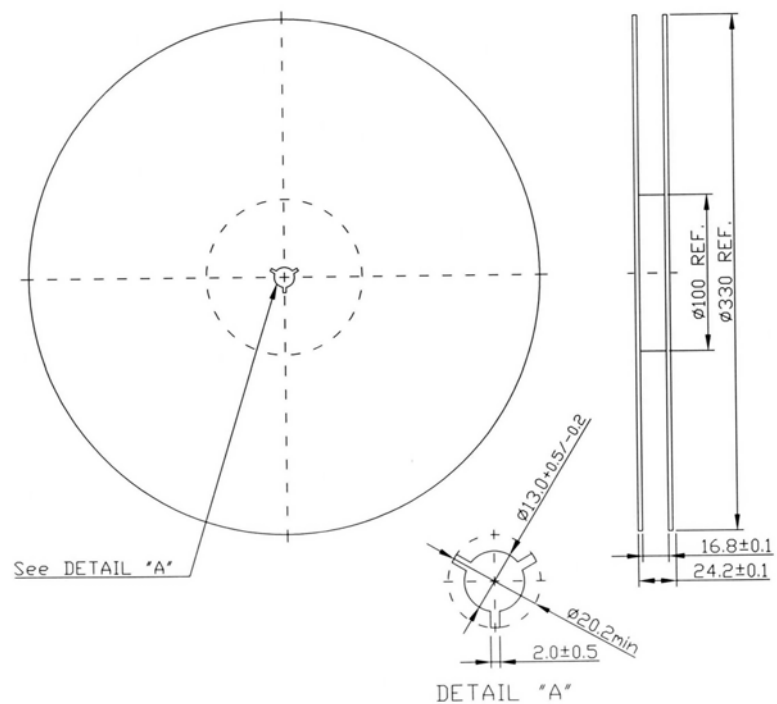
F. PCB FootPrint



G. PACKING:

1. REEL DIMENSION

(Please refer to FR-75D10 for packing quantity)



[illegible]

The graph displays a cooling curve with the following approximate data points:

Time (Sec)	Temp (Deg C)
0	25
20	28
40	145
60	150
80	158
100	155
120	170
140	178
160	195
180	215
200	250
220	260
240	245
260	175
280	148
300	148
320	135
340	120
360	110