

FEATURES:

- Universal Input: 90~264VAC
- High Efficiency Up To 80%
- Protection: Short Circuit/Overload
- Internal Input Filter
- RoHS Compliant
- UL Recognized

Specifications typical at TA=25°C nominal input voltage and rated output current unless otherwise specified

Part Number	Output Wattage	Output Voltage	Output Current	Ripple & Noise	Efficiency
	(W)	(V)	(mA)	(mV) Max (Note)	(% TYP)
AC5A-S03	3.3	3.3	1000	150	70
AC5A-S05	5	5	1000	150	70
AC5A-S06	5	6	830	150	70
AC5A-S12	6	12	500	150	75
AC5A-S14	6	14	430	150	76
AC5A-S18	6	18	335	150	78
AC5A-S24	6	24	250	240	78
AC5A-S48	6	48	125	240	80

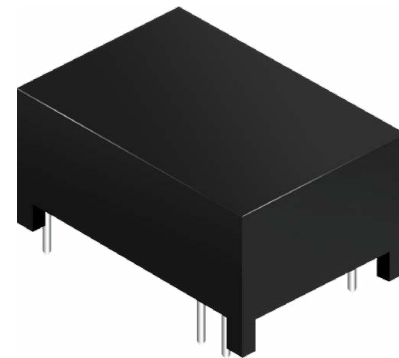
Note:

Ripple & noise is measured by using 20 MHz bandwidth, measured with 47uf paralleled with a high-frequency 0.47uf capacitor across each output by full load.



AC-DC Converter AC5A SERIES

5-6Watt
3KV Isolated
Single Output
Module

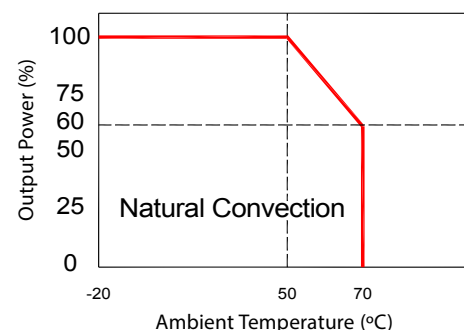


Input Specifications

Parameters	Conditions	Min	Typ	Max	Units
Rated Input Voltage	Vo, lo nom		100~240		Vac
Input Voltage Range	Vo, lo nom	AC in	90	264	Vac
		DC in	120	370	Vdc
Line Frequency	Vi nom, lo nom	47	50/60	63	Hz
Inrush Current	lo nom	Vi:115VAC		10	A
		Vi:230VAC		18	A
Leakage Current				0.25	mA
Input Current (Full Load)		130mA Max.(115Vac) 80mA Max.(230Vac)			
External Fuse (Recommend)		VDE/UL/CCC FUSE 1.0A/250V (Slow blow)			



Temperature Derating Graph



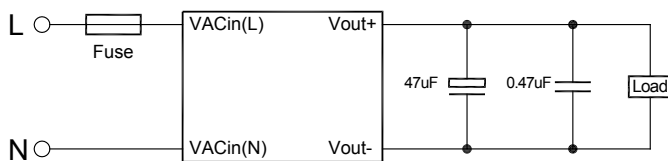
Output Specifications

Parameters	Conditions	Min	Typ	Max	Units
Output Voltage Accuracy	Vi nom, Io nom			±2	%
Minimum Load	Vi nom	0			%
Line Regulation	Io nom, Vi min...Vi max		±0.2		%
Load Regulation	Vi nom, Io min...Io nom	3.3V Models	±0.1		%
		5...48V Models	±0.5		%
Transient Recovery Time	Vi nom, Io nom = ← → 0.5 Io nom		1000		µs
Protection	Over load	Above 110% rated output power Protection type: Recovers automatically after fault condition is removed			
	Short circuit	Recovers automatically after fault condition is removed			

General Specifications

Parameters	Conditions	Min	Typ	Max	Units
Switching Frequency	Vi nom, Io nom		100		KHz
Isolation Voltage	Input / Output		3KVac/ 5mA/5Secs		
Isolation Resistance	Input / Output, @500 Vdc	100			MΩ
Operating Temperature	Refer to Temperature Derating Graph	-40		+70	°C
Storage Temperature	Non Operational	-40		+85	°C
Relative Humidity	Vi nom, Io nom			95	% RH
Safety Standards	Design refer to UL60950-1, IEC60950-1				
Dimensions	L35.0 x W25.4 x H17.8 mm				
Cooling	Free air convection				

Recommended Application Circuit



Note:

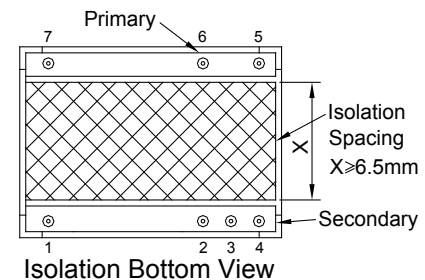
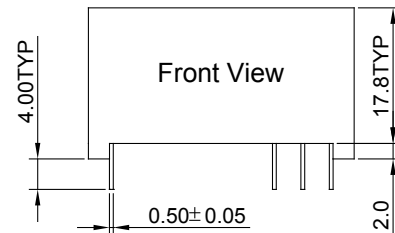
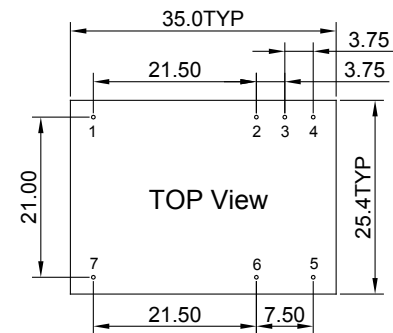
1. Fuse: 1A/250V (Slow blow)
2. Ripple & noise is measured by using 20 MHz bandwidth, measured with a 47µF paralleled with a high-frequency 0.47µF capacitor across each output by full load.

Part Number

AC5A - S 05
A B C

- A: Series
B: Single Output
C: Output Voltage

Markings and Dimensions



UNIT: mm
Unless otherwise specified, all tolerances are ±0.5.

PIN Connection

PIN	1	2	3	4	5	6	7
GA5A	NC	+Vo	-Vo	NC	L	N	NC