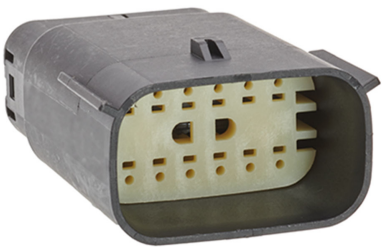




Part Number : [334826201](#)
Product Description : MX150 Mat-Sealed Male Connector Assembly, Dual Row, 12 Circuits, Keying Option A, without Connector Position Assurance, Black
Series Number : 33482
Status : Active
Product Category : Connector Housings



Documents & Resources


Drawings
[334826201_sd.pdf](#)
[PK-31300-635-001.pdf](#)

3D Models and Design Files
[334826201_stp.zip](#)

Specifications
[AS-33472-100-CH-001.pdf](#)

Product Environment Compliance

Compliance

GADSL/IMDS	Compliant
China RoHS	
EU ELV	Compliant per 2000/53/EC
Low-Halogen Status	Low-Halogen per IEC 61249-2-21
REACH SVHC	Not Contained per D(2024)4144-DC (27 June 2024)
EU RoHS	Compliant per EU 2015/863

- Multiple Part Product Compliance Statements
- Eu RoHS
 - REACH SVHC
 - Low-Halogen

- Multiple Part Industry Compliance Documents
- IPC 1752A Class C
 - IPC 1752A Class D

- Molex Product Compliance Declaration
- IEC-62474
- chemSHERPA (xml)

EU RoHS Certificate of Compliance

Part Details

General

Status	Active
Category	Connector Housings
Series	33482
Description	MX150 Mat-Sealed Male Connector Assembly, Dual Row, 12 Circuits, Keying Option A, without Connector Position Assurance, Black
Application	Power, Wire-to-Wire, Automotive
Product Name	MX150
UPC	889056544351

Agency

UL	E29179
----	--------

Physical

Circuits (maximum)	12
Color - Resin	Black
Flammability	94V-0
Gender	Plug
Glow-Wire Capable	No
Keying to Mating Part	Yes
Lock to Mating Part	Yes
Material - Resin	SPS/Nylon
Net Weight	14.937/g
Number of Rows	2
Packaging Type	Bag
Panel Mount	No
Pitch - Mating Interface	3.50mm

Polarized to Mating Part	Yes
Stackable	No
Temperature Range - Operating	-40° to +125°C

Mates With / Use With

Mates with Part(s)

Description	Part Number
MX150 Mat-Sealed Dual Row Female Connector Assemblies	<u>33472</u>

Use with Part(s)

Description	Part Number
MX150 Sealed Cavity Plug	<u>343450001</u>
MX150 Backshell for Male Sealed Connector Assembly, 12 Circuit, with Rib	<u>349501210</u>
MX150 Backshell for Male Sealed Connector Assembly, 12 Circuit, without Rib	<u>349501220</u>
MX150 Male Terminals	<u>33000</u>
MX150 Male Terminals	<u>33011</u>