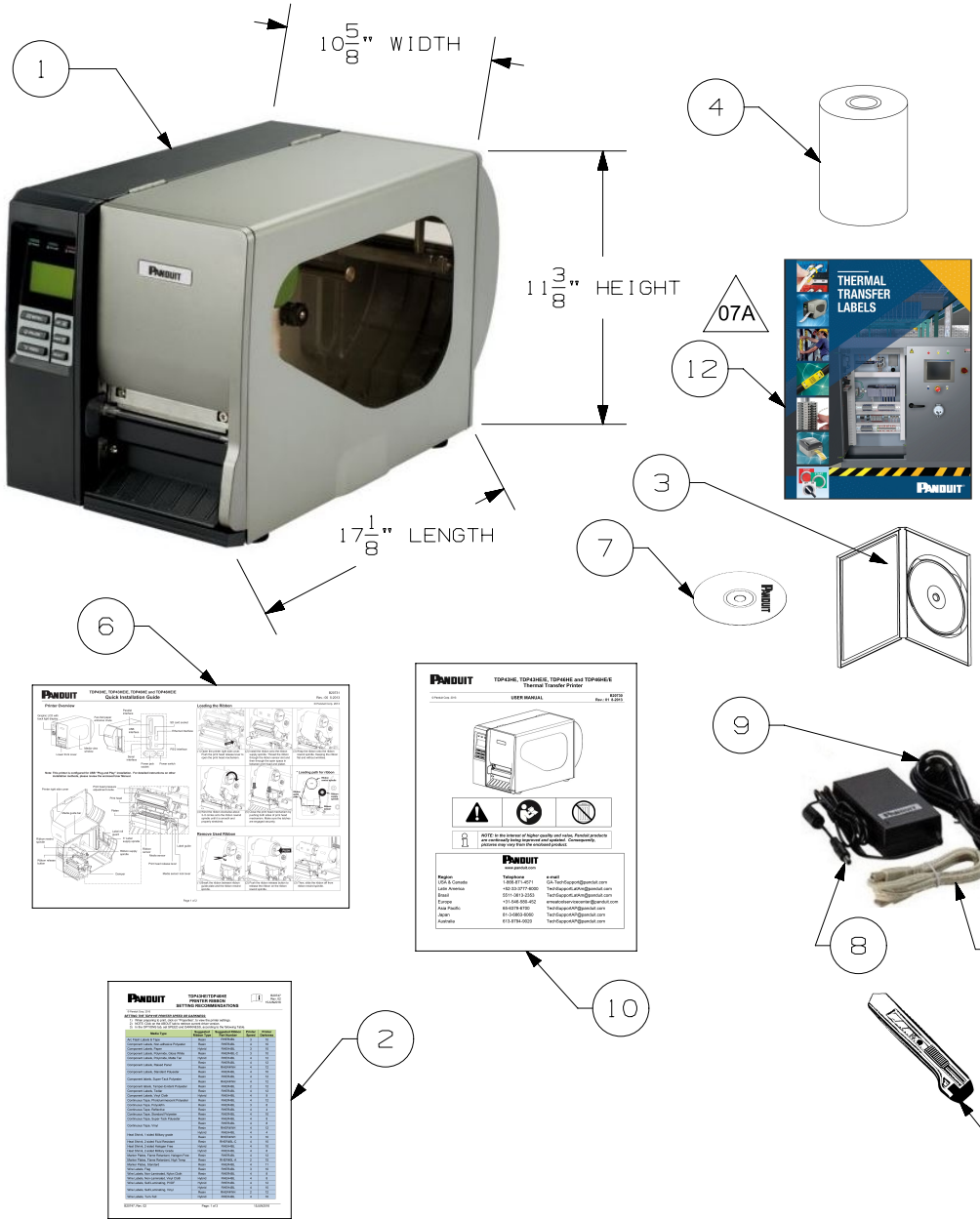


THIS COPY IS PROVIDED ON A RESTRICTED BASIS AND IS NOT TO BE USED IN ANY WAY DETRIMENTAL TO THE INTERESTS OF PANDUIT CORP.



07A

ITEM NO.	NAME	DESCRIPTION (INCLUDES ACCESSORIES)	QTY.
1	PRINTER	TDP43HE (300 dpi) or TDP46HE (600 dpi)	1
2	PRINTER CARD	PRINTER RIBBON SETTINGS RECOMMENDATIONS SHEET	1
3	EASY-MARK PLUS CD	CD WITH EASY-MARK PLUS LABELING SOFTWARE	1
4	INK RIBBON	RMEH4BL HYBRID INK RIBBON (BLACK)	1
5	COMMUNICATION CABLE	USB CABLE	1
6	USER MANUAL	PRINTER USER MANUAL AND QUICK START GUIDE	1
7	DRIVER AND MANUAL CD	CD WITH PRINTER DRIVER AND USER MANUAL	1
8	POWER SUPPLY	24 VOLT POWER SUPPLY	1
9	POWER CORD	NORTH AMERICAN POWER CORD	1
10	USER MANUAL	PRINTER USER MANUAL AND QUICK START GUIDE	1
11	KNIFE	SNAP-BLADE STYLE KNIFE	1
12	THERMAL TRANSFER LINE CARD	BROCHURE FOR PANDUIT THERMAL TRANSFER LABELS	1

07A

NOTES:

- VISIT OUR ON-LINE CATALOG AT WWW.PANDUIT.COM FOR A LIST OF CURRENT PARTS APPLICABLE FOR USE WITH THIS PRODUCT.
- ALL MATERIALS AND COMPONENTS USED MEET THE MATERIAL RESTRICTIONS OF RoHS (EUROPEAN DIRECTIVE 2011/65/EU ON THE RESTRICTION OF HAZARDOUS SUBSTANCES) AS PROPOSED BY THE RoHS TECHNICAL ADAPTATION COMMITTEE.

07A

PART NUMBER		TDP43HE, TDP46HE	
TITLE		TDP43HE & TDP46HE THERMAL DESKTOP PRINTER CUSTOMER DRAWING	
ITEM REVISION NAME		121106BB/07	
DATASET FILE NAME		121106BB_DC-07A C11742 TDP4_HE r07A CUST DWG	
MATERIAL		N/A	
DRAWING NUMBER		C11742	
DRAWN BY		RVU	DATE
CHECKED BY		CHK	SCALE
DATE		4/21/2021	NONE
SHEET		SHEET 1 OF 1	
SIZE		A	



REV	DATE	BY	CHK	APR	DESCRIPTION	ECN
07A	4/21/2022	RVU	ANRO	MSAD	REPLACED FROM IDLC08--SA-ENG TO THERMAL TRANSFER LINE CARD. REPLACED LINE CARD IMAGE. SEE ITEM # 12. UPDATED ALL NAME BOM. DRAWING TABLE COLUMN HEADING PART NUMBER REPLACED WITH NAME HEADING. ADDED NOTE 2 FOR RoHS.	GAECN06172
00	4/21/2021	RVU	RCMC	JADE	INITIAL RELEASE	GAECN05842

2

1

A-SIZE CUSTOMER