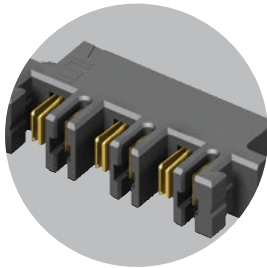


## HIGH POWER SYSTEMS

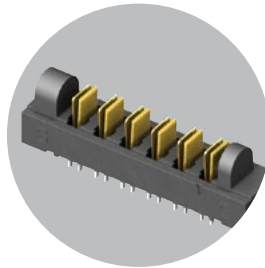
**20-60 A**  
per blade

### FEATURES & BENEFITS

- Current Rating: 23 A - 58.7 A per power blade
- 3.81 mm, 5.00 mm and 6.35 mm pitch
- Dual blade contact system
- Power only or power/signal combinations available
- Right-angle and vertical orientations
- Rugged screw down and locking clip options
- Discrete wire cable assemblies with 10-16 AWG wire (see pages 246-248)
- "Hinged" for unique mating in any orientation from 0° to 90° and space confined applications



Hermaphroditic options  
[samtec.com?MPPT](http://samtec.com?MPPT) and  
[samtec.com?UPPT](http://samtec.com?UPPT)



Hinging options available  
[samtec.com?FMPT](http://samtec.com?FMPT) and  
[samtec.com?FMPS](http://samtec.com?FMPS)

### CREEPAGE & CLEARANCE

SERIES	CREEPAGE	CLEARANCE
UPT/UPS/UPPT	5.50 mm	1.51 mm
MPT/MPS/MPTC/MPSC	2.95 mm	2.71 mm
PET/PES/PETC/PESC	3.66 mm	3.31 mm

Selectively loading contacts achieves customer specific creepage and clearance requirements.

### KEY SPECIFICATIONS

SERIES	PITCH	INSULATOR MATERIAL	CONTACT MATERIAL	PLATING	OPERATING TEMP RANGE	CURRENT RATING	VOLTAGE RATING	LEAD-FREE SOLDERABLE
UPT/UPS	(3.81 mm) .150"	Black LCP	BeCu	Sn or Au over 50 μ" (1.27 μm) Ni	-55 °C to +105 °C (Sn) -55 °C to +125 °C (Au)	23 A (1 pin powered)	438 VAC	Yes
UPPT	(3.81 mm) .150"	Black LCP	Copper Alloy	Sn or Au over 50 μ" (1.27 μm) Ni	-55 °C to +105 °C (Sn) -55 °C to +125 °C (Au)	21.4 A (1 pin powered)	425 VAC	Yes
MPT/MPS	(5.00 mm) .1969"	Black LCP	Copper Alloy	Sn or Au over 50 μ" (1.27 μm) Ni	-55 °C to +105 °C (Sn) -55 °C to +125 °C (Au)	28.8 A (1 pin powered)	575 VAC	Yes
MPTC/MPSC	(5.00 mm) .197" (pwr) (2.00 mm) .079" (sig)	Black LCP	Signal: Phosphor Bronze Terminal: Copper Alloy	Sn or Au over 50 μ" (1.27 μm) Ni	-55 °C to +105 °C (Sn) -55 °C to +125 °C (Au)	28.8 A (pwr - 1 pin powered) 5 A (sig - 4 pins powered)	250 VAC	Yes
PET/PES	(6.35 mm) .250"	Black LCP	Copper Alloy	Sn or Au over 50 μ" (1.27 μm) Ni	-55 °C to +105 °C (Sn) -55 °C to +125 °C (Au)	58.7 A (1 pin powered)	450 VAC	Yes
PETC/PESC	(6.35 mm) .250" (pwr) (2.54 mm) .100" (sig)	Black LCP	Copper Alloy	Sn or Au over 50 μ" (1.27 μm) Ni	-55 °C to +105 °C (Sn) -55 °C to +125 °C (Au)	31.4 A (pwr - 1 pin powered) 5.7 A (sig - 4 pins powered)	650 VAC (pwr) 450 VAC (sig)	Yes

## (5.00 mm) .1969" PITCH • 30 A DUAL BLADE/LEAF SYSTEMS

SERIES	POWER PINS	LEAD STYLE	TAIL LENGTH	PLATING OPTION	TAIL
MPT Terminal	-02, -03, -04, -06, -08	-6.30 = (6.30 mm) 0.248" (MPT only)	-01 = Use with (1.60 mm) .062" Thick PCB  -03 = Use with (2.36 mm) .093" Thick PCB	-L = 10 μ" (0.25 μm) Gold on contact, Matte Tin on tail  -T = Matte Tin	(Required Callout)  -V = Vertical
MPS Socket		-7.70 = (7.70 mm) 0.303" (MPS only)			

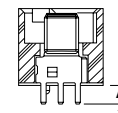
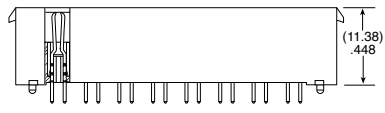
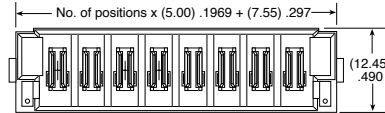
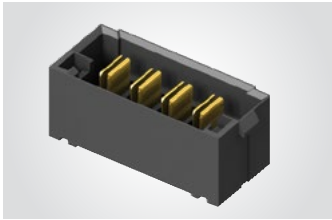
### MPT

Board Mates:

MPS

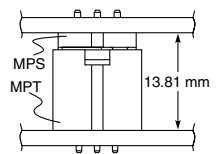
Cable Mates:

MPSS



TAIL LENGTH	A
-01	(2.72) .107
-03	(3.51) .138

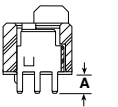
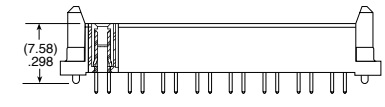
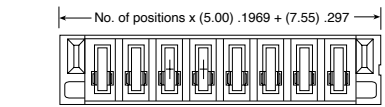
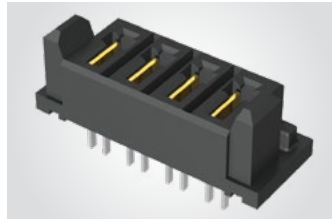
### MATED HEIGHT



### MPS

Board Mates:

MPT



TAIL LENGTH	A
-01	(2.72) .107
-03	(3.52) .139

View complete specifications at: [samtec.com?MPT](http://samtec.com?MPT) & [samtec.com?MPS](http://samtec.com?MPS)

SERIES	POWER PINS	01	TAIL LENGTH	PLATING OPTION	RA	SD
MPT Terminal	-02, -04, -06, -08		-01 = Use with (1.60 mm) .062" Thick PCB  -03 = Use with (2.36 mm) .093" Thick PCB	-L = 10 μ" (0.25 μm) Gold on contact, Matte Tin on tail  -T = Matte Tin		
MPS Socket						

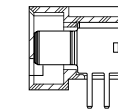
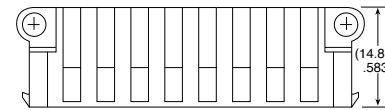
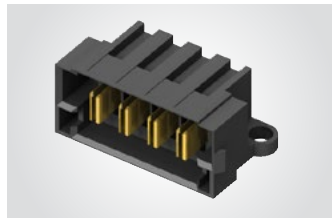
### MPT-RA

Board Mates:

MPS

Cable Mates:

MPSS

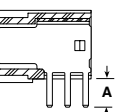
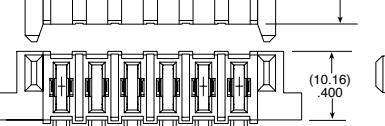
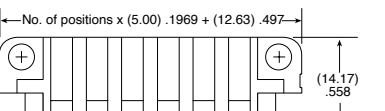
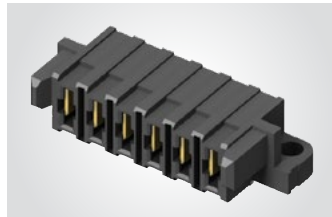


TAIL LENGTH	A
-01	(2.72) .107
-03	(3.51) .138

### MPS-RA

Board Mates:

MPT



TAIL LENGTH	A
-01	(2.72) .107
-03	(3.52) .139

**Note:**  
Some lengths, styles and options are non-standard, non-returnable

View complete specifications at: [samtec.com?MPT](http://samtec.com?MPT) & [samtec.com?MPS](http://samtec.com?MPS)