

Features

- Extended GSM Band
- Low Loss
- Low Ripple

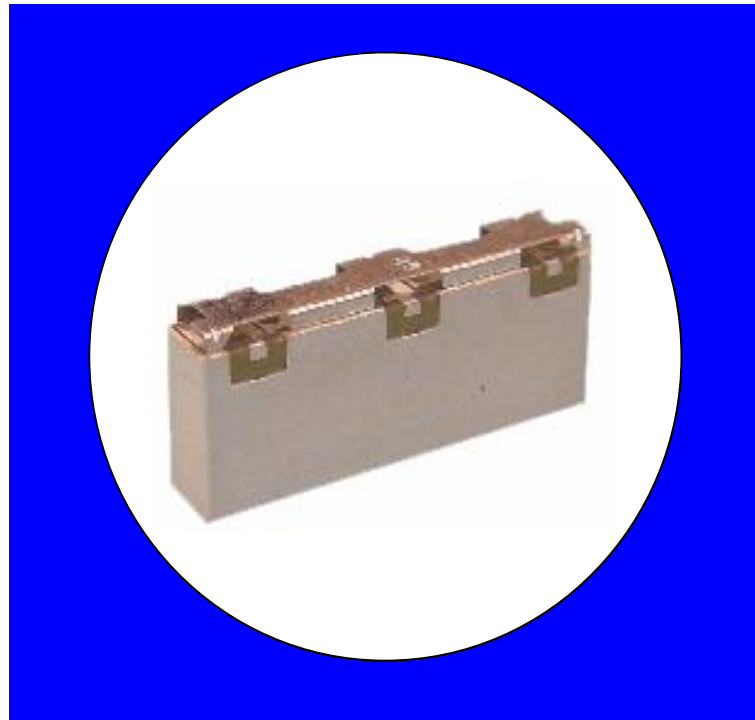
Description

Surface mount, silver (Ag) coated ceramic duplexer. Developed for use in Extended band GSM applications.

Weight: 3.7 grams typical

Material: Filter is composed of a ceramic block plated with Ag and a shield made of nickel silver plated steel.

Filter complies with RoHS standards.



Electrical Specifications

Parameter	Frequency MHz	Typical @ 25°C	Specification @ 25°C	Spec over -40°C to +85°C
Low Band Response (S13)				
Passband Iloss	880 - 915	-3.50	-3.80	-4.00
Passband Ripple	880 - 915	2.50	2.90	3.10
Passband Return Loss @ Port 2	880 - 915	-12.00	-10.00	-10.00
Passband Return Loss @ Ant	880 - 915	-12.00	-10.00	-10.00
Attenuation	540 - 575	-47.50	-45.00	-45.00
	710 - 745	-36.00	-30.00	-30.00
High Band Response (S21)				
Passband Iloss	925 - 960	-3.70	-4.00	-4.20
Passband Ripple	925 - 960	2.60	2.90	3.10
Passband Return Loss @ Port 3	925 - 960	-13.00	-10.00	-10.00
Passband Return Loss @ Ant	925 - 960	-13.00	-10.00	-10.00
Isolation (S23)				
Rejection @ Low Band	880 - 915	-42.00	-40.00	-40.00
Rejection @ High Band	925 - 960	-37.00	-35.00	-35.00
Power into any port		2 Watt max		

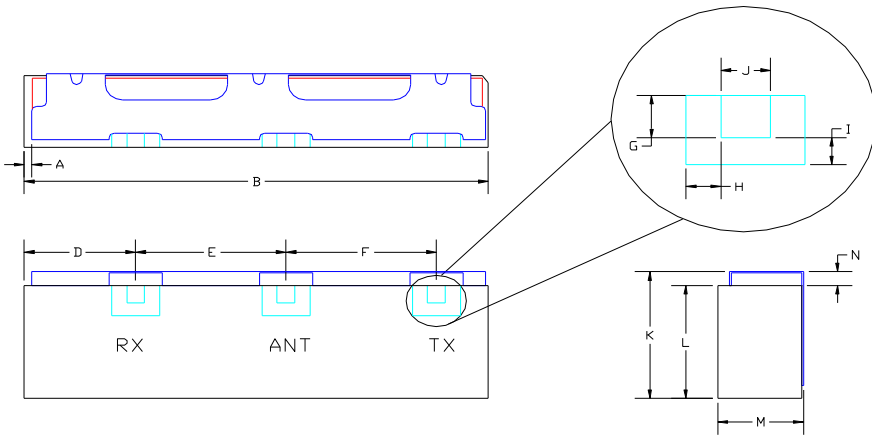
Note: Supplier shall test each filter to the critical electrical specifications of the above table. Any subsequent audits may deviate from in value due to measurement repeatability among different test systems. Such deviations shall not exceed the following limits:

Specification	Allowance
Insertion Loss	0.1 dB
Return Loss	1.0 dB
Stopbands	1.0 dB

*This product is covered by one or more of the following U.S. and foreign patents including: US 4,692,726;US 4,742,562; US 4,800,348;US 4,829,274;US 5,146,193;EP 0573597;DE 0573597;FR 0573597;JP 508149/92;KR 142171;US 5,162,760;US 5,218,329;US 5,250,916;US 5,327,109;US 5,488,335;CA 2114029;FR 9306297;GB 2273393;JP 3205337;KR 115113;CN 93106228.4;US 5,512,866;EP 0706719;DE 0706719;FR 0706719;GB 0706719;CN 95190359.4;US 5,602,518;US 5,721,520;US 5,745,018;EP 0910875;DE 0910875;DK 0910875;FR 0910875;GB 0910875;IE 0910875;JP 505182/98;KR 10-323013;US 5,994,978;US 6,462,629;CN 00810420.4;US 6,559,735;US 6,650,202;US 6,834,429.Other US and foreign patents pending.

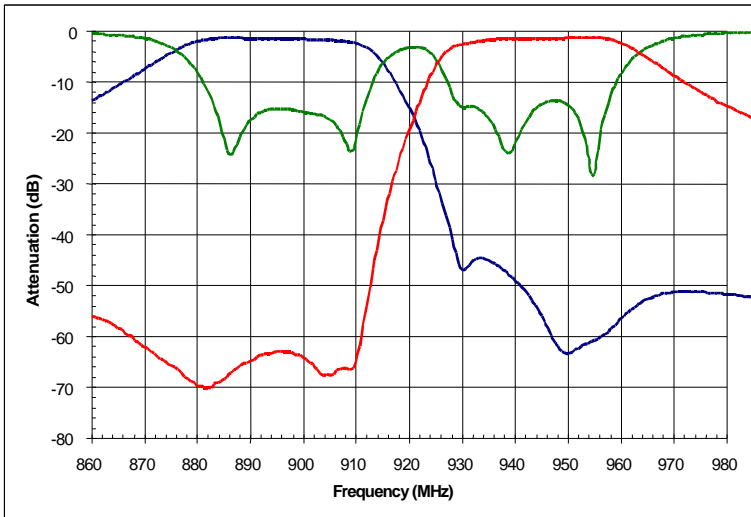
CTS Corporation 2006 reserves all copyrights in the layout, design and configuration of the patterns on this product.

Mechanical Drawing

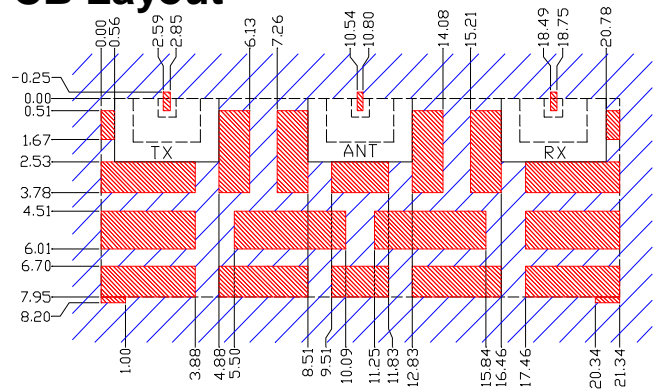


Dim	Nominal (mm)	Tolerance (mm) +/- or max
A		
B	21.54	max
C		
D	2.72	0.20
E	7.95	0.20
F	7.95	0.20
G	0.76	0.13
H	1.00	0.13
I	1.00	0.13
J	0.76	0.13
K	9.00	max
L	8.00	0.20
M	4.00	max
N	0.80	0.13

Electrical response



PCB Layout



Dimensions are in MM
Tolerances = ±.13

- Filter Outline
- Solder Resist Over Dielectric
- ▨ Exposed Conductor
- ▤ Solder Resist Over Conductor

Packaging and Marking

DIMENSION	UNITS	SPECIFICATION
REEL DIAMETER	mm	330
REEL WEIGHT	kg	2.6
REEL QUANTITY	ea.	500

