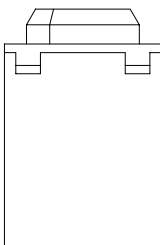
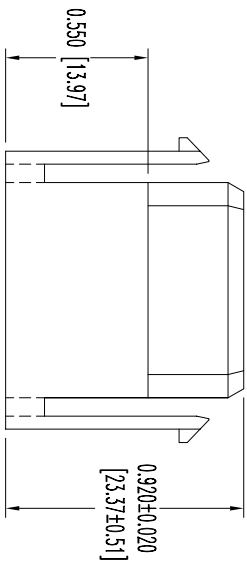
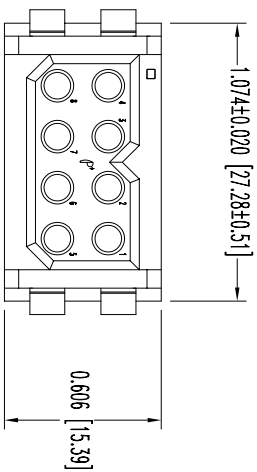


POSITRONIC INDUSTRIES BELIEVES THE DATA ON THIS DRAWING TO BE RELIABLE SINCE THE TECHNICAL INFORMATION IS GIVEN FREE OF CHARGE, THE USER EMPLOYS SUCH INFORMATION AT HIS OWN DISCRETION. POSITRONIC INDUSTRIES ASSUMES NO LIABILITY AND RESPONSIBILITY FOR RESULTS OBTAINED OR DAMAGES INCURRED FROM USE OF SUCH INFORMATION IN WHOLE OR IN PART.



- NOTES:
1. MATERIALS AND FINISHES:  
INSULATOR: GLASS FILLED POLYESTER, UL 94V-0, COLOR BLUE.
  2. ELECTRICAL CHARACTERISTICS:  
INSULATOR RESISTANCE: 5 G OHMS PER IEC 512-2, TEST 3d, METHOD A.  
WORKING VOLTAGE: 600 VAC.
  3. WORKING TEMPERATURE: -55°C TO +125°C
  4. CONNECTORS ARE ROHS COMPLIANT PER ROHS DIRECTIVE 2002/95/EC OF 27 JAN 2003.
  5. DIMENSIONS ARE INCHES [MILLIMETERS]

DATE	REV	REVISION RECORD	APP	DR	CK
9-14-07	NC	ECO 28436	RCW	YK	COM

SK8935



**POSITRONIC INDUSTRIES INC.**  
www.connectpositronic.com

FSCM 28198

DECIMAL TOL.	± 0.015 [0.38]	SCALE	N.T.S.	DRAWN BY	YK
ANGULAR TOL.	± 5°	PCS SERIES		APPROVED BY	RCW
DATE	9-14-07	TITLE	PLB08F7000/AA		
DRAWING NUMBER	SK8935			REV.	NC