



DDR4 DIMM

TE Internal #: 2309410-2

Small Outline (SO), Stack Height 5.2 mm [.205 in], Right Angle
Module Orientation, 200 / 260 Position, DDR4 DIMM, SO DIMM
Sockets

[View on TE.com >](#)

Connectors > Socket Connectors > Memory Sockets > SO DIMM Sockets > DDR4 SO DIMM Sockets



DRAM Type: **Small Outline (SO)**
Stack Height: **5.2 mm [.205 in]**
Module Orientation: **Right Angle**
Number of Positions: **200, 260**
Centerline (Pitch): **.5 mm [.02 in]**

[All DDR4 SO DIMM Sockets \(39\)](#)

Features

Product Type Features

Connector System	Cable-to-Board
Connector & Contact Terminates To	Printed Circuit Board
DRAM Type	Small Outline (SO)

Configuration Features

Number of Keys	1
Number of Rows	2
Module Orientation	Right Angle
Number of Positions	200, 260

Electrical Characteristics

DRAM Voltage	1.2 V
--------------	-------

Signal Characteristics

SGRAM Voltage	1.2 V
---------------	-------

Body Features

Ejector Location	Both Ends
Retention Post Material	Copper Alloy



Latch Material	High Temperature Thermoplastic
Retention Post Location	Both Ends
Ejector Type	Locking
Connector Profile	Low

Contact Features

Memory Socket Type	Memory Card
Contact Underplating Material	Nickel
PCB Contact Termination Area Plating Material	Gold Flash
Contact Base Material	Copper Alloy
Contact Current Rating (Max)	.5 A
Contact Mating Area Plating Material	Gold
Contact Mating Area Plating Material Thickness	.127 μ m[5 μ in]

Termination Features

Insertion Style	Cam-In
Termination Method to PCB	Surface Mount

Mechanical Attachment

Mating Alignment Type	Reverse Keying
PCB Mount Retention	With
PCB Mount Retention Type	Solder Peg
Connector Mounting Type	Board Mount

Housing Features

Housing Material	High Temperature Thermoplastic
Housing Color	Black
Centerline (Pitch)	.5 mm[.02 in]

Dimensions

Stack Height	5.2 mm[.205 in]
Row-to-Row Spacing	8.2 mm[.322 in]

Usage Conditions

Operating Temperature Range	-55 – 85 °C[-67 – 185 °F]
-----------------------------	---------------------------

Operation/Application

Circuit Application	Power
---------------------	-------

Industry Standards

UL Flammability Rating	UL 94V-0
------------------------	----------

Packaging Features

Packaging Quantity	800
Packaging Method	Tape & Reel

Product Compliance

[For compliance documentation, visit the product page on TE.com>](#)

EU RoHS Directive 2011/65/EU	Compliant
EU ELV Directive 2000/53/EC	Compliant
China RoHS 2 Directive MIIT Order No 32, 2016	No Restricted Materials Above Threshold
EU REACH Regulation (EC) No. 1907/2006	Current ECHA Candidate List: JUNE 2024 (241) Candidate List Declared Against: JAN 2021 (211) Does not contain REACH SVHC
Halogen Content	Low Halogen - Br, Cl, F, I < 900 ppm per homogenous material. Also BFR/CFR/PVC Free
Solder Process Capability	Not reviewed for solder process capability

Product Compliance Disclaimer

This information is provided based on reasonable inquiry of our suppliers and represents our current actual knowledge based on the information they provided. This information is subject to change. The part numbers that TE has identified as EU RoHS compliant have a maximum concentration of 0.1% by weight in homogenous materials for lead, hexavalent chromium, mercury, PBB, PBDE, DBP, BBP, DEHP, DIBP, and 0.01% for cadmium, or qualify for an exemption to these limits as defined in the Annexes of Directive 2011/65/EU (RoHS2). Finished electrical and electronic equipment products will be CE marked as required by Directive 2011/65/EU. Components may not be CE marked. Additionally, the part numbers that TE has identified as EU ELV compliant have a maximum concentration of 0.1% by weight in homogenous materials for lead, hexavalent chromium, and mercury, and 0.01% for cadmium, or qualify for an exemption to these limits as defined in the Annexes of Directive 2000/53/EC (ELV). Regarding the REACH Regulation, the information TE provides on SVHC in articles for this part number is based on the latest European Chemicals Agency (ECHA) 'Guidance on requirements for substances in articles' posted at this URL: <https://echa.europa.eu/guidance-documents/guidance-on-reach>

Compatible Parts



Also in the Series | DDR4 DIMM



DIMM Sockets(25)



SO DIMM Sockets(39)

Customers Also Bought



TE Part #5-1462037-8
IM43TS=IM RELAY 100mW 5V BIS



TE Part #2227582-1
1X4 R/A ASSY, MINI SAS HD
INTERNAL



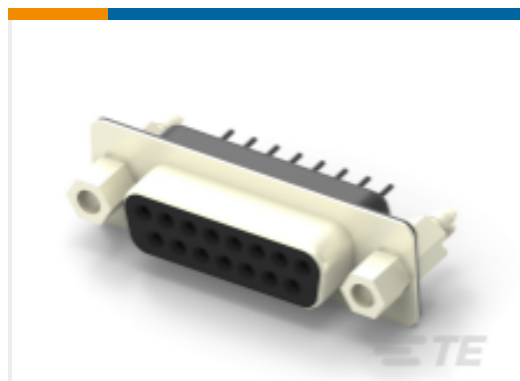
TE Part #1061015-1
5863 0000 10,OSX PCB PLUG



TE Part #103908-1
02 MTE HDR SRST LATCH W/HLDWN



TE Part #2301838-1
AMPL REC HD20, VERT, 9P, B/L,4-40
INS



TE Part #2301840-1
AMPL REC HD20, VERT, 15P, B/L,4-40
S/LOC



TE Part #CONMCX002
MCX Jack 50 Ohm PCB Through Hole



TE Part #3-2176305-0
RP 1E 0.1W 215R 0.1% 25PPM 5K RL



TE Part #2081679-1
SMA JACK RECEPTACLE,PCB,RIGHT
ANGLE,6GHZ

Documents

Product Drawings

[DDR4 SODIMM 260P 5.2H RVS](#)

English

CAD Files

[3D PDF](#)

[3D](#)



Customer View Model

[ENG_CVM_CVM_2309410-2_1.2d_dxf.zip](#)

English

Customer View Model

[ENG_CVM_CVM_2309410-2_1.3d_igs.zip](#)

English

Customer View Model

[ENG_CVM_CVM_2309410-2_1.3d_stp.zip](#)

English

By downloading the CAD file I accept and agree to the [Terms and Conditions](#) of use.

Product Specifications

[Application Specification](#)

English