



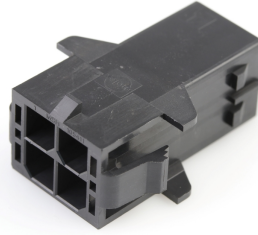
Part Number : [1054111104](#)

Product Description : Mega-Fit Plug Housing, Dual Row, 4 Circuit, UL 94V-0, Glow-Wire Capable, Panel Mount

Series Number : 105411

Status : Active

Product Category : Connector Housings



Documents & Resources

Drawings

[1054111104_sd.pdf](#)

[1054110200-000.pdf](#)

3D Models and Design Files

[1054111104_stp.zip](#)

Specifications

[768232000-AS-000.pdf](#)

[1054171000-PS-000.pdf](#)

[1054171000-PS-CH-000.pdf](#)

[1054171000-PS-KO-000.pdf](#)

[1054171000-PS-SPA-000.pdf](#)

Product Environment Compliance

Compliance

GADSL/IMDS	Not Relevant
China RoHS	
EU ELV	Not Relevant
Low-Halogen Status	Not Low-Halogen per IEC 61249-2-21
REACH SVHC	Not Contained per D(2024)4144-DC (27 June 2024)
EU RoHS	Compliant per EU 2015/863

Multiple Part Product Compliance Statements

- Eu RoHS
- REACH SVHC
- Low-Halogen

Multiple Part Industry Compliance Documents

- IPC 1752A Class C
- IPC 1752A Class D
- Molex Product Compliance Declaration
- IEC-62474
- chemSHERPA (xml)

EU RoHS Certificate of Compliance

Part Details

General

Status	Active
Category	Connector Housings
Series	105411
Description	Mega-Fit Plug Housing, Dual Row, 4 Circuit, UL 94V-0, Glow-Wire Capable, Panel Mount
Application	Power, Wire-to-Wire
Product Name	Mega-Fit
UPC	191130076680

Agency

UL	E29179
----	--------

Physical

Circuits (maximum)	4
Color - Resin	Black
Gender	Plug
Glow-Wire Capable	Yes
Keying to Mating Part	None
Lock to Mating Part	Yes
Material - Resin	Nylon
Net Weight	3.130/g
Number of Rows	2
Packaging Type	Bag
Panel Mount	Yes
Pitch - Mating Interface	5.70mm

Pitch - Termination Interface	5.70mm
Polarized to Mating Part	Yes
Stackable	No
Temperature Range - Operating	-40° to +105°C, -40° to +120°C

Mates With / Use With

Mates with Part(s)

Description	Part Number
Mega-Fit Tangless TPA-Capable Receptacle Housing, Dual Row, 4 Circuit, UL 94V-0, Glow-Wire Capable, Black	<u>1716920204</u>

Use with Part(s)

Description	Part Number
Mega-Fit Terminal Position Assurance (TPA) Retainers	<u>105415</u>
Mega-Fit Male Crimp Terminals, Tin Plating	<u>105417</u>
Mega-Fit Male Crimp Terminals, Gold Plating	<u>105418</u>