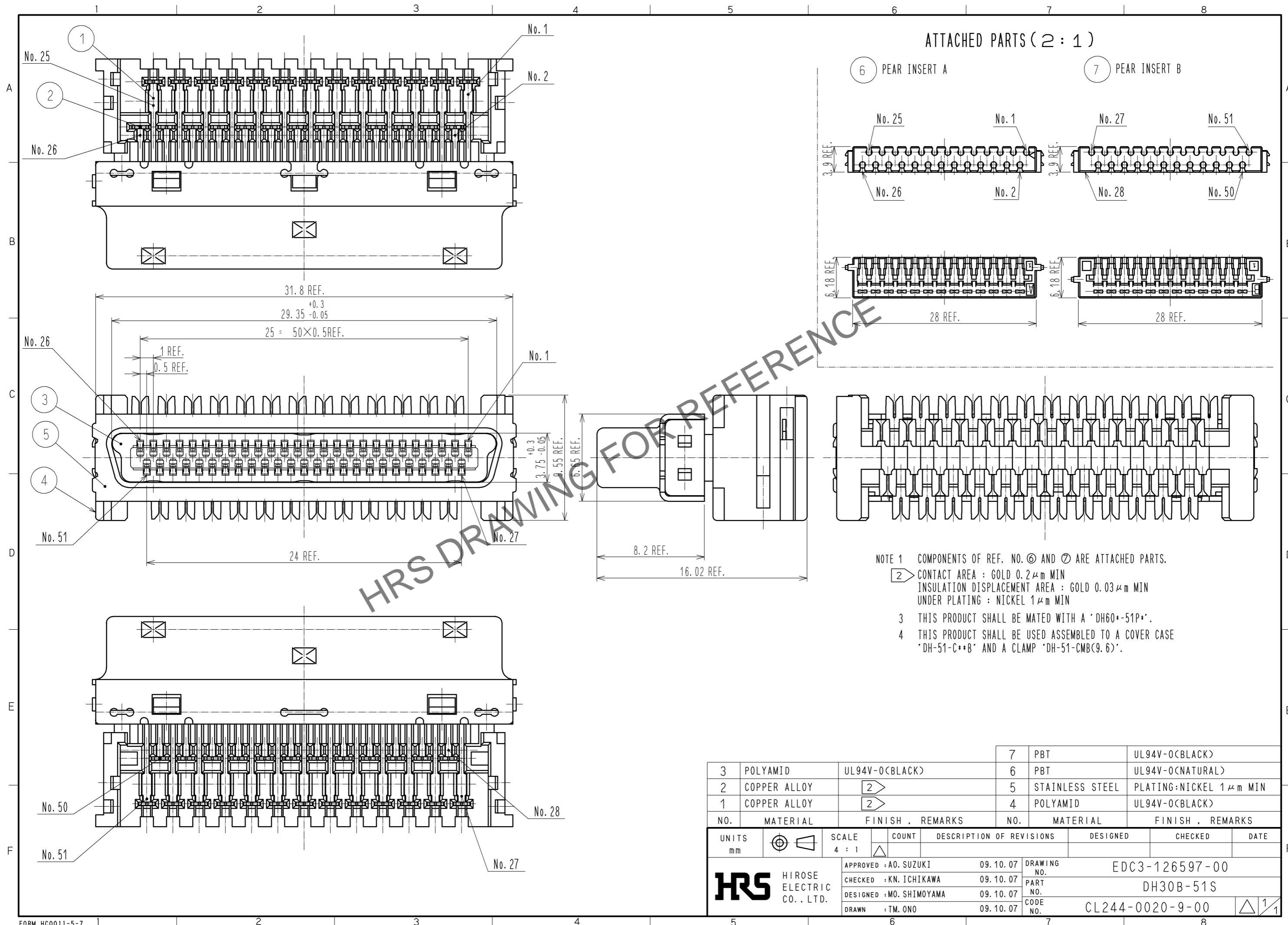
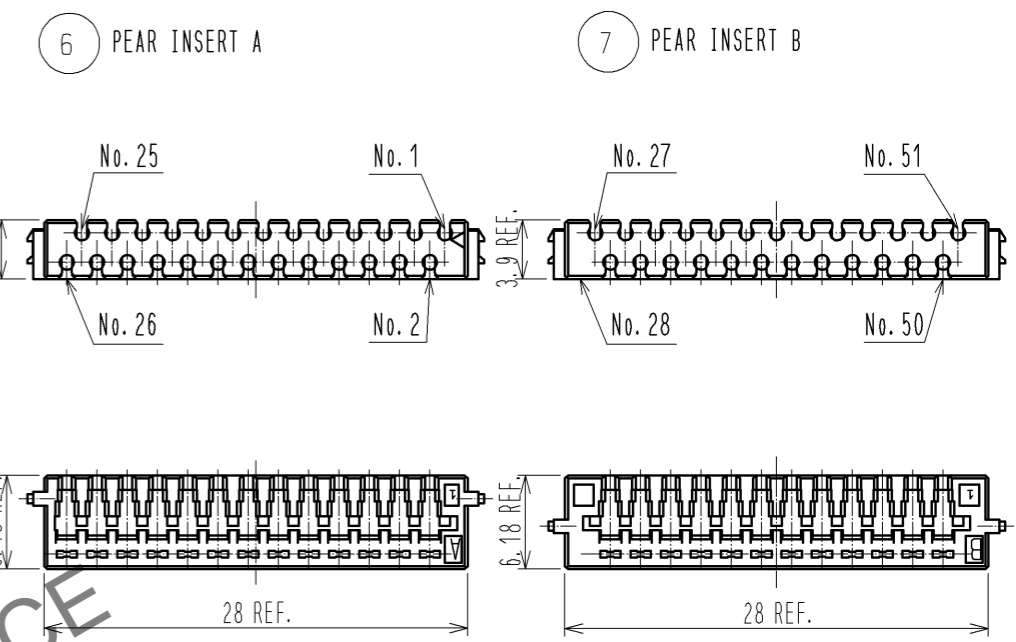


Jul.1.2024 Copyright 2024 HIROSE ELECTRIC CO., LTD. All Rights Reserved.
 In case of consideration for using Automotive equipment / device which demand high reliability, kindly contact our sales window correspondents.



ATTACHED PARTS (2 : 1)



- NOTE 1 COMPONENTS OF REF. NO. ⑥ AND ⑦ ARE ATTACHED PARTS.
 ② CONTACT AREA : GOLD 0.2 μm MIN
 INSULATION DISPLACEMENT AREA : GOLD 0.03 μm MIN
 UNDER PLATING : NICKEL 1 μm MIN
 3 THIS PRODUCT SHALL BE MATED WITH A 'DH60*-51P*'.
 4 THIS PRODUCT SHALL BE USED ASSEMBLED TO A COVER CASE 'DH-51-C**B' AND A CLAMP 'DH-51-CMB(9.6)'.

NO.	MATERIAL	FINISH	REMARKS	NO.	MATERIAL	FINISH	REMARKS
3	POLYAMID		UL94V-0(BLACK)	7	PBT		UL94V-0(BLACK)
2	COPPER ALLOY	②		6	PBT		UL94V-0(NATURAL)
1	COPPER ALLOY	②		5	STAINLESS STEEL		PLATING:NICKEL 1 μm MIN
				4	POLYAMID		UL94V-0(BLACK)

UNITS	SCALE	COUNT	DESCRIPTION OF REVISIONS	DESIGNED	CHECKED	DATE
mm	4 : 1	△				
APPROVED : A0. SUZUKI			09.10.07	DRAWING NO. EDC3-126597-00		
CHECKED : KN. ICHIKAWA			09.10.07	PART NO. DH30B-51S		
DESIGNED : MO. SHIMOYAMA			09.10.07	CODE NO. CL244-0020-9-00		
DRAWN : TM. ONO			09.10.07	1/1		