

PRODUCT NUMBER
51702-ABBCC00EF-- Note: ①
SEE NOTE 1

1 | 2

3

4

Tous droits strictement réservés. Reproduction ou communication à des tiers interdite sans que l'on ait obtenu l'autorisation écrite du propriétaire. Property of FCI. Copyright FCI.

DIM	LENGTH FORMULAS (SEE NOTE 10)
DIM "A"	.250 [6.35] x BB + .100 [2.54] x (CCC/4) + .650 [16.51] (NOTE 10)
DIM "B"	.250 [6.35] x BB + .100 [2.54] x (CCC/4) + .350 [8.89]
DIM "C"	.250 [6.35] x BB + .100 [2.54] x (CCC/4) + .300 [7.62]
DIM "D"	.250 [6.35] x BB + .375 [9.53]
DIM "F"	.250 [6.35] x BB + .100 [2.54] x (CCC/4) + .680 [17.27]
DIM "G"	.250 [6.35] x BB + .225 [5.72]

CONNECTOR NOTES

- ① PRODUCT NUMBER CODE:
51702 - A BB CCC 00 E F LF
NO THIS SUFFIX: 100µ"/72.54µm SnPb ON PCB INTERFACE
ADD THIS SUFFIX: 78µ"/72.00µm Sn ON PCB INTERFACE
RETENTION TO PCB (NOTE 8)
TAIL OPTIONS (NOTE 7)
ALWAYS "00" (ZERO, ZERO)(NOTE 6)
NUMBER OF SIGNAL CONTACTS (NOTE 5)
NUMBER OF LEFT POWER CONTACTS (NOTE 4)
PLATING (NOTE 3)
BASE NUMBER

- ② HOUSING MATERIAL: UL94 V-0 GLASS FILLED HIGH TEMP THERMO PLASTIC.
SIGNAL CONTACT MATERIAL: COPPER ALLOY
POWER CONTACT MATERIAL: COPPER ALLOY
- ③ PLATING OPTION:
1 = SEE PRINT 10064183 FOR PLATING SPEC OF 51702-1BBCC00EF; 51702-1BBCC00EFLF.
- ④ LEFT END POWER CONTACTS, 01 TO 20 AVAILABLE.
- ⑤ SIGNAL CONTACT, 004 TO 148 AVAILABLE.
- ⑥ THIS PART NOT AVAILABLE WITH RIGHT SIDE POWER CONTACTS.
- ⑦ TAIL OPTIONS:
A = 0.135 ± 0.015/-0.010 [3.43 ± 0.38/-0.25] SOLDER TO BOARD
B = 0.165 ± 0.015/-0.010 [4.19 ± 0.38/-0.25] SOLDER TO BOARD
C = 0.165 ± 0.015/-0.010 [4.19 ± 0.38/-0.25] PRESS FIT
- ⑧ RETENTION TO PCB OPTIONS:
A = BOARD LOCK (REQUIRES 0.098 ± 0.0027/-0.001 [2.49 ± 0.057/-0.03] THRU HOLE IN PCB).
(NOT AVAILABLE WITH PRESS FIT)
C = NO RETENTION FEATURE (ALL PRESS FIT).

- ⑨ MANUFACTURE'S NAME, P/N, AND DATE CODE TO APPEAR ON THIS SURFACE.
- ⑩ THE MAXIMUM OVERALL LENGTH (DIM A) OF A PART IS 8.00 [203.2]
- ⑪ PRODUCT SPECIFICATION 6S-12-149
- 12. SEE PWRBLADE VERTICAL HEADER SPECIAL WORKSHEET (91696) FOR MATING LENGTH OPTIONS.
- 13. DIMENSIONS AND TOLERANCES ARE IN ACCORDANCE WITH ASME Y14.5M, 1994 UNLESS OTHERWISE SPECIFIED.

PCB NOTES:

- 14. ALL DIMENSIONS ARE BASIC UNLESS OTHERWISE SPECIFIED.
- 15. ALL THROUGH HOLES ARE LOCATED WITH A TRUE POSITION OF 0.004 [0.10]
- 16. ALL HOLE DIAMETERS ARE FINISHED HOLE SIZE.
- 17. Ø0.098 [2.49] THROUGH HOLES ARE UNPLATED
- 18. Ø0.0453 ± 0.0010 [1.151 ± 0.025] DRILLED HOLES PLATED WITH 0.0003 [0.008] MIN SnPb OVER 0.001 [0.03] TO 0.003 [0.08] Cu PLATING TO ACHIEVE A Ø0.040±0.003 [1.02±0.07] HOLE.
- 19. FOR PRESS FIT APPLICATION USE FCI CAM TOOL 430169-XXX.
- 20. A SYMBOL WILL BE NEXT TO ANY DIMENSION, VIEW, OR NOTE WHICH HAS BEEN MODIFIED WITH THE CURRENT DRAWING REVISION.

A



All rights strictly reserved. Reproduction or issue to third parties in any form whatever is not permitted without written authority from the proprietor. Property of FCI. Copyright FCI.

mat'l code		NOTE 2		tolerances unless otherwise specified		CUSTOMER		FCJ	
lfr	ecm no.	dr	date	linear	.XX±.01/0.X±0.3	COPY		www.fcjconnect.com	
P				angles	.XXX±.005/0.XXX±0.13	projection		title VERTICAL HEADER w/ GUIDE PIN	
					0°±2°	INCH/MM		product family PWRBLADE code	
				dr	JRW 10-16-01	scale		size dwg no 51702 sheet	
				engr	J-ALLISON 10-16-01	1:1		2	
				chr	J-ALLISON 10-16-01				
				appd	J-ALLISON 10-16-01				
sheet index	revision	sheet						cage code 22526	

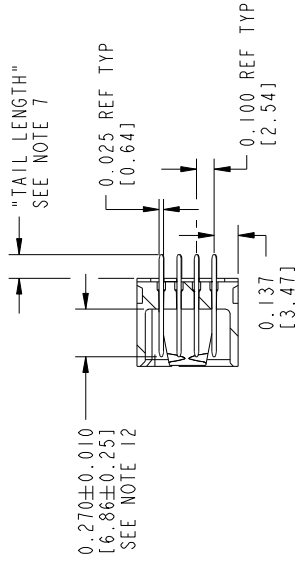
1 | 2

Pro/E

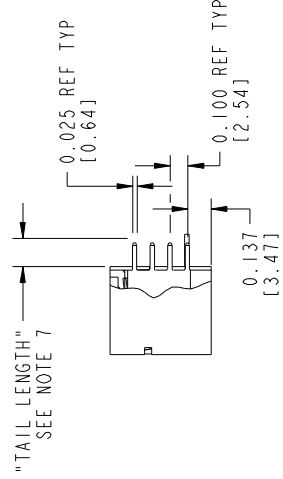
3

4

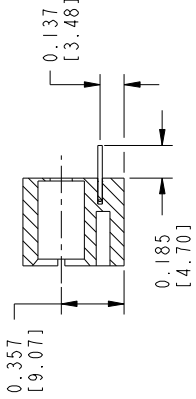
PRODUCT NUMBER
51702-ABBCC00EF--
Note: ①
SEE NOTE 1



SECTION A-A



SECTION B-B



SECTION C-C

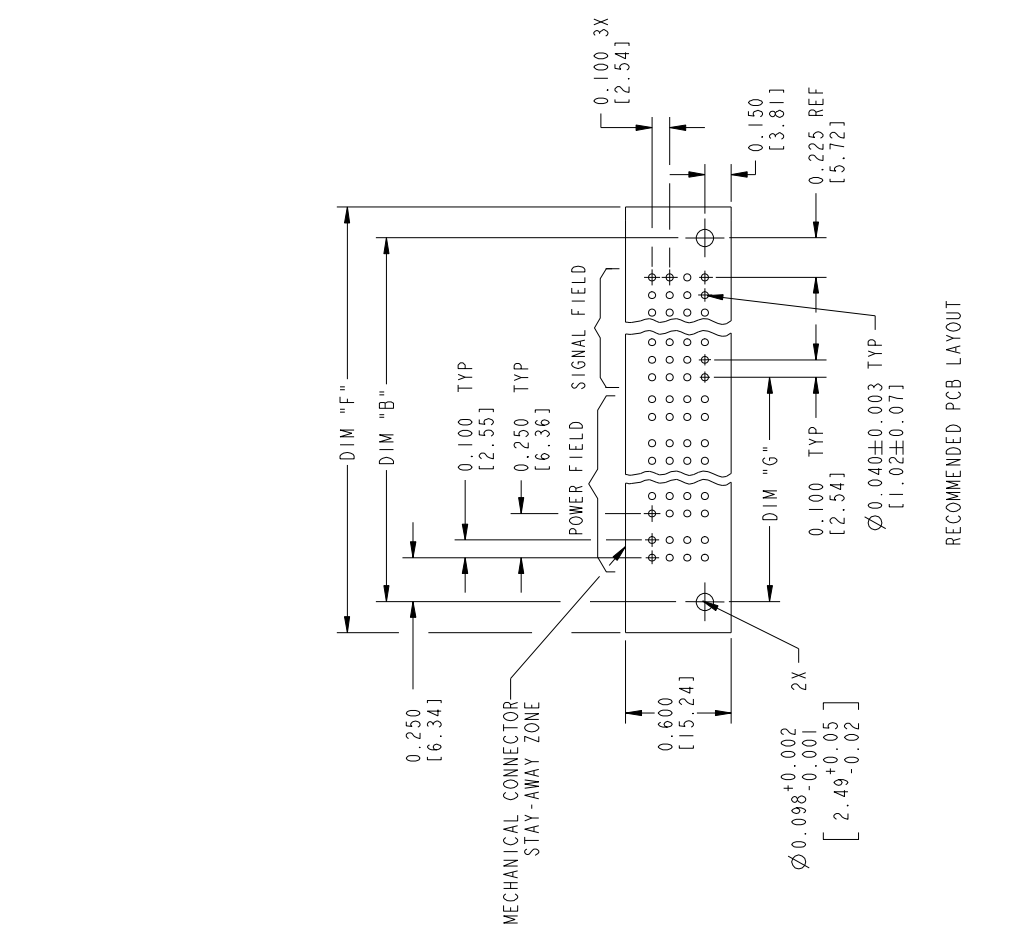
Tous droits strictement réservés. Reproduction ou communication à des tiers interdite sans queque forme que ce soit sans autorisation écrite du propriétaire. Propriété de c FCI. Droits de reproduction FCI.



All rights strictly reserved. Reproduction or issue to third parties in any form whatever is not permitted without written authority from the proprietor. Property of FCI. Copyright FCI.

3

4



RECOMMENDED PCB LAYOUT

mat'l code		NOTE 2		tolerances unless otherwise specified		CUSTOMER		FCJ		www.fcconnect.com	
lir	ecn no.	dr	date	linear	.XXX±.01/0.XX±0.3	projection	COPY	title	VERTICAL HEADER w/ GUIDE PIN		
P				angles	.XXX±.0020/.XXX±.051	dr	0°±2°	POWER / SIGNAL	product family	PWRBLADE	
				engr	J.ALLISON	dr	10-16-01	INCH/MM	dwg no	51702	
				chr	J.ALLISON	appd	10-16-01	scale	size	2 13	
				appd	J.ALLISON		10-16-01	1:1	sheet	3	
sheet index	revision	sheet							code	A	
									cage code	22526	
										4	

3

Pro/E

112

B