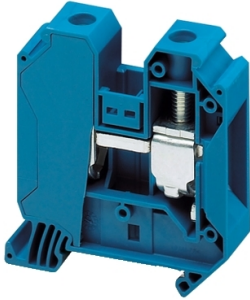


Product data sheet

Specifications



Terminal block, Linergy TR, blue, 35mm², passthrough, 2 points, set of 10

NSYTRV352BL

Main

Range	Linergy
Product name	Linergy TR
Product or component type	Terminal block
Device short name	TRV
Accessory / separate part category	Connection accessory
Terminal block type	Passthrough
Terminal block level	1
mounting mode	Clip-on
Nominal cross section	35 mm ²
Length	60.2 mm
Colour	Blue
Quantity per set	Set of 50

Complementary

Width	16 mm
Height	65.7 mm
Connections - terminals	1 x screw terminal: upstream (M6) 1 x screw terminal: downstream (M6)
number of connections	2
Connection position	Sideways
Number of measurement input	2
Cable cross section	1.5...50 mm ² , flexible cable without cable end 1.5...50 mm ² , solid cable with cable end 1.5...50 mm ² , flexible cable with cable end 1.5...50 mm ² , solid cable without cable end
Tightening torque	3.2...3.7 N.m
Wire stripping length	18 mm
Tool type	Connection: screwdriver Disconnection: screwdriver
[Ue] rated operational voltage	1000 V conforming to EN/IEC 60947-7-1 600 V CSA 690 V conforming to ATEX Exe II Ex II 2 GD 600 V cURus

Disclaimer: This documentation is not intended as a substitute for and is not to be used for determining suitability or reliability of these products for specific user applications

[In] rated current	125 A conforming to EN/IEC 60947-7-1 150 A cURus 150 A CSA 126 A conforming to ATEX Exe II Ex II 2 GD
Material	Polyamide 6/6: insulating case Copper alloy: connector and screw Copper alloy: commoning link Chromium-nickel steel: spring
Dielectric loss	0.01 at 1 MHz conforming to IEC 60250 0.01 at 1 MHz conforming to VDE 0303-T4
Dielectric constant	3.7 at 1 MHz
Resistivity	10000 MΩ.m conforming to IEC 60093 10000 MΩ.m conforming to VDE 0303-T30
Surface resistance	1000 GΩ conforming to IEC 60093 1000 GΩ conforming to VDE 0303-T30
Creep resistance	500 CTI (> 400 kB) conforming to IEC 60093 500 CTI (> 400 kB) conforming to VDE 0303-T30
Flame retardance	V0, thickness 0.8 mm conforming to UL 94
Product weight	61 g
Range compatibility	Prisma G Prisma P Prisma PH Prisma Pack Spacial Kaedra Pragma TeSys
Product compatibility	Spacial enclosures

Environment

product certifications	IEC-Ex EAC cURus GL CSA VDE ATEX
Dielectric strength	1000 V conforming to IEC 60243-1
Ambient air temperature for operation	-40...130 °C conforming to IEC 60216-1 -40...130 °C conforming to VDE 0304-T21

Packing Units

Unit Type of Package 1	PCE
Number of Units in Package 1	1
Package 1 Height	1.700 cm
Package 1 Width	6.500 cm
Package 1 Length	6.600 cm
Package 1 Weight	57.000 g
Unit Type of Package 2	BB1
Number of Units in Package 2	50
Package 2 Height	9.800 cm
Package 2 Width	27.500 cm
Package 2 Length	17.800 cm

Package 2 Weight	2.997 kg
Unit Type of Package 3	P06
Number of Units in Package 3	1250
Package 3 Height	75.000 cm
Package 3 Width	60.000 cm
Package 3 Length	80.000 cm
Package 3 Weight	84.925 kg

Contractual warranty

Warranty	18 months
----------	-----------

Sustainability

Green Premium™ label is Schneider Electric's commitment to delivering products with best-in-class environmental performance. Green Premium promises compliance with the latest regulations, transparency on environmental impacts, as well as circular and low-CO₂ products.

Guide to assessing product sustainability is a white paper that clarifies global eco-label standards and how to interpret environmental declarations.

[Learn more about Green Premium >](#)

[Guide to assess a product's sustainability >](#)



Transparency RoHS/REACH

Well-being performance

✓ Reach Free Of Svhc

✓ Toxic Heavy Metal Free

✓ Mercury Free

✓ Rohs Exemption Information Yes

✓ Halogen Free Plastic Parts Product

Certifications & Standards

Reach Regulation

[REACH Declaration](#)

Eu Rohs Directive

Compliant

[EU RoHS Declaration](#)

China Rohs Regulation

[China RoHS declaration](#)

Pro-active China RoHS declaration (out of China RoHS legal scope)

Environmental Disclosure

[Product Environmental Profile](#)

Weee

The product must be disposed on European Union markets following specific waste collection and never end up in rubbish bins

Circularity Profile

No need of specific recycling operations