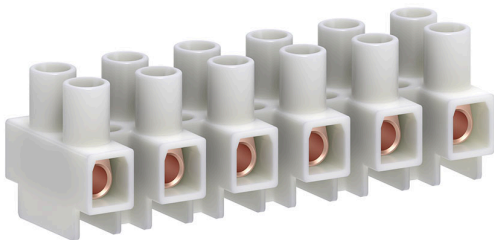




Part Number : [391002210](#)
Product Description : 12.00mm Pitch Beau Eurostyle Two-Screw Terminal Strips, 10 Circuits
Series Number : 39100
Status : Active
Product Category : Terminal Blocks and Barrier Strip
Engineering Number : M800-03-10-5-M1




Documents & Resources

Drawings

[Drawing 391002210_sd.pdf](#)

Product Environment Compliance

Compliance

| | |
|--------------------|---|
| GADSL/IMDS | Not Relevant |
| China RoHS |  |
| EU ELV | Not Relevant |
| Low-Halogen Status | Low-Halogen per IEC 61249-2-21 |
| REACH SVHC | Contains Lead per D(2024)4144-DC (27 June 2024) |
| EU RoHS | Compliant with Exemption 6(c) per EU 2015/863 |

Multiple Part Product Compliance Statements

- Eu RoHS
- REACH SVHC
- Low-Halogen

Multiple Part Industry Compliance Documents

- IPC 1752A Class C
- IPC 1752A Class D
- Molex Product Compliance Declaration
- IEC-62474

Part Details

General

| | |
|----------------|---|
| Status | Active |
| Category | Terminal Blocks and Barrier Strip |
| Series | 39100 |
| Description | 12.00mm Pitch Beau Eurostyle Two-Screw Terminal Strips, 10 Circuits |
| Application | Wire-to-Wire |
| Component Type | One Piece |
| Product Family | Terminal Blocks & Barrier Strips |
| Product Name | Eurostyle Two Screw |
| Type | Barrier and Terminal Strips |
| UPC | 78172545244 |

Electrical

| | |
|-------------------------------|-------|
| Current - Maximum per Contact | 40.0A |
| Voltage - Maximum | 600V |

Physical

| | |
|---------------------|--------------------------------|
| Circuits (Loaded) | 10 |
| Circuits (maximum) | 10 |
| Color - Resin | White |
| Entry Angle | Horizontal |
| Lock to Mating Part | None |
| Material - Metal | Stainless Steel |
| Material - Resin | Nylon |
| Net Weight | 40.830/g |
| Number of Rows | 2 |
| Orientation | Vertical |
| Panel Mount | Mounting Holes Between Circuit |
| PCB Retention | Yes |

| | |
|-------------------------------|---------------------------|
| Pitch - Mating Interface | 12.00mm |
| Pitch - Termination Interface | 12.00mm |
| Polarized to Mating Part | No |
| Stackable | No |
| Temperature Range - Operating | -40° to +105°C |
| Wire Size (AWG) | 10, 12, 14, 16, 18, 20, 8 |