

REVISION BF

DIMENSIONS ARE IN INCHES		TOLERANCES ARE:	
ONE PLACE DECIMALS ±	THREE PLACE DECIMALS ±	ANGLES ± 2°	
TWO PLACE DECIMALS ±	FOUR PLACE DECIMALS ±		

TITLE: **TERMINAL STRIP ASSEMBLY**

DWG NO: **TX-1XX-X-X**
SHEET 1 OF 5

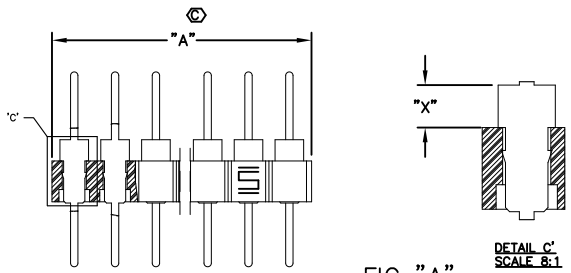
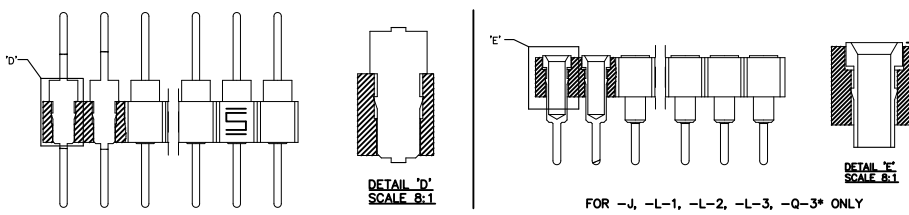


FIG "A"
TD-1XX-X-X & TS-1XX-X-B SHOWN
(SEE NOTE 6 & 10)



NOT AVAILABLE FOR -J, -L-1, -L-2, -L-3, -Q-3*

FIG "B"
TS-1XX-X-X SHOWN
(DIFFERENT AS SHOWN, OTHERWISE SAME AS FIG "A")
(SEE NOTE 7 & 8)

TX-1XX-X-X

BODY SPECIFICATION
TS : (SEE TABLE 1)
TD : (SEE TABLE 1)

SERIES SPECIFICATION
-1 (100 CENTERS BETWEEN POSITIONS)

BODY LENGTH SPECIFICATION
-XX = NUMBER OF POSITIONS
(TS : 32 MAX.)
(TD : 36 MAX. (SEE NOTE 11))
(SEE FIG. "A")

TERMINAL STYLE
(SEE TABLE 1)

PLATING SPECIFICATION
-G: .00020 GOLD PER MIL-G-45204 OVER .00005 NICKEL (QG-N-289), (.00001 GOLD ON STYLES -L-X, AND -J)
-T: .000200 BRIGHT ACID TIN PER MIL-T-10727B TYPE 1, OVER .0001 MIN. COPPER.

TABLE 3

BODY SPEC.	LEAD STYLE	TUBE	PLUG	FIG
TS	A-1, A-2, A, AA, B, C, H, G-1	PT-1-24-01-24	TP-24	30
	J	PT-1-24-01-23	TP-12	31
	D-1-2	PT-1-24-02-03	TP-24	32
	D-1-1	PT-1-24-10-03	TP-03	33
TD	A-1	PT-1-24-05-17	TP-07	34
	A-2	PT-1-24-02-46		35
	A, AA	PT-1-24-01-22	TP-03	36
	J	PT-1-24-01-14		37

TABLE 2

BODY SPEC.	"A"
TS	[(100 X NO. OF POS)+.008]±.015
TD	[(100 X NO. OF POS)-.008]±.015

TABLE 1

TERMINAL STYLE	TERMINAL/BODY SPECIFICATION								FIG	SHEET
	TS: SINGLE	TS BODY	"X"		TD: DOUBLE	TD BODY	"X"			
			MIN	MAX			MIN	MAX		
-AA	T-1R5-X	SEE NOTE 7	.049[1.24].063[1.60]	T-1R5-X	SEE NOTE 6	.049[1.24].063[1.60]	1	2		
-A	T-1R0-X	SEE NOTE 7	.047[1.19].065[1.65]	T-1R0-X	SEE NOTE 6	.047[1.19].065[1.65]	2	2		
-A-1	T-1R7-1-X	SEE NOTE 7	.047[1.19].065[1.65]	T-1R7-1-X	SEE NOTE 6	.047[1.19].065[1.65]	3	2		
-A-2	T-1R7-2-X	SEE NOTE 7	.047[1.19].065[1.65]	T-1R7-2-X	SEE NOTE 6	.047[1.19].065[1.65]	4	2		
-B	T-1R1-X	SEE NOTE 10	.227[5.77].245[6.22]	T-1R1-X	SEE NOTE 6	.227[5.77].245[6.22]	5	2		
-B-2	T-1R8-2-X	SEE NOTE 7	.227[5.77].245[6.22]	T-1R8-2-X	SEE NOTE 6	.227[5.77].245[6.22]	7	2		
-C	T-1R2-X	SEE NOTE 7	.052[1.32].070[1.78]	T-1R2-X	SEE NOTE 6	.052[1.32].070[1.78]	8	2		
-C-1	T-1R9-1-X	SEE NOTE 7	.052[1.32].070[1.78]	T-1R9-1-X	SEE NOTE 6	.052[1.32].070[1.78]	9	2		
-C-2	T-1R9-2-X	SEE NOTE 7	.052[1.32].070[1.78]	T-1R9-2-X	SEE NOTE 6	.052[1.32].070[1.78]	10	2		
-D-1-1	T-1S4-1-1-X	SEE NOTE 7	.047[1.19].062[1.57]	T-1S4-1-1-X	SEE NOTE 6	.047[1.19].062[1.57]	11	3		
-D-1-2	T-1S4-1-2-X	SEE NOTE 7	.047[1.19].082[2.08]	T-1S4-1-2-X	SEE NOTE 6	.047[1.19].082[2.08]	12	3		
-E	T-1R12-X	SEE NOTE 7	.047[1.19].062[1.57]	N/A			17	3		
-G-1	T-1R5-1-X	SEE NOTE 7	.017[0.43].028[0.71]	T-1R5-1-X	SEE NOTE 6	.017[0.43].028[0.71]	19	3		
-J	S-1P1-X	SEE NOTE 8	.000[0.00].008[0.20]	S-1P1-X	SEE NOTE 6	.029[0.74].039[0.99]	21	4		
-K	T-1R12-X	SEE NOTE 7	.047[1.19].062[1.57]	T-1R12-X	SEE NOTE 6	.047[1.19].062[1.57]	22	4		
-L-1	S-1W1-1-X	SEE NOTE 8	.000[0.00].005[0.13]	S-1W1-1-X	SEE NOTE 6	.029[0.74].039[0.99]	23	4		
-L-2	S-1W1-2-X	SEE NOTE 8	.000[0.00].005[0.13]	S-1W1-2-X	SEE NOTE 6	.029[0.74].039[0.99]	24	4		
-L-3	S-1W1-3-X	SEE NOTE 8	.000[0.00].005[0.13]	S-1W1-3-X	SEE NOTE 6	.029[0.74].039[0.99]	25	4		
-N	T-1R5-1-X	SEE NOTE 7	.017[0.43].028[0.71]	N/A			27	4		
-Q-3 *	S-1W1-3-X	SEE NOTE 7	.000[0.00].005[0.13]	N/A			29	4		

N/A = NOT AVAILABLE * STYLE -Q-3 AVAILABLE ONLY AS A COMPONENT OF CSP/25 CABLE ASSEMBLIES.

PROPRIETARY NOTE
THIS DOCUMENT CONTAINS CONFIDENTIAL AND PROPRIETARY INFORMATION AND ALL RIGHTS ARE RESERVED THEREIN. NO PART OF THIS DOCUMENT IS TO BE REPRODUCED OR TRANSMITTED IN ANY FORM OR BY ANY MEANS, ELECTRONIC OR MECHANICAL, INCLUDING PHOTOCOPYING, RECORDING, OR BY ANY INFORMATION STORAGE AND RETRIEVAL SYSTEM, WITHOUT THE WRITTEN CONSENT OF SAMTEC, INC.

- NOTE:
- SEE COMPONENT PRINT FOR MAXIMUM ALLOWABLE BOW.
 - MINIMUM PUSHOUT FORCE = 5 LBS.
 - MAXIMUM ALLOWABLE TOE IN/OUT OF TERMINALS = ± 2°.
 - MAX ALLOWABLE FLASH AFTER REMOVAL OF CROSS BARS: .005 [13]
 - Ø REPRESENTS A CRITICAL DIMENSION.
 - USE DSB-36 AND FILL WITH COUNTERBORE DOWN.
 - USE TBS-32 AND FILL WITH COUNTERBORE UP.
 - USE SSB-XX AND FILL WITH COUNTERBORE UP.
 - FOR LEAD STYLES PACKAGED IN TUBES: PACKAGE -05 THRU -36 POSITIONS IN TUBES.
 - USE SSB-XX AND FILL WITH COUNTERBORE DOWN.
 - FOR 1 POSITION TD ASSEMBLY, USE A TS-132 AND CUT TO A 2 POSITION.
 - BULK PACKAGE ALL POSITIONS LESS THAN 5.

MATERIAL:
INSULATOR:
GLASS FILLED POLYESTER
COLOR: BLACK

TERMINAL:
BRASS, EXCEPT STYLE G
IS PHOSPHOR BRONZE

EXISPROD/ASSEMBLY100
TX-ASM1

samtec

520 PARK EAST BLVD. NEW ALBANY, INDIANA 47150
PHONE (812) 944-6733 P.O. BOX 1147
CODE 55322

MADE BY: L.W. 12/05/84

PLOT SCALE: 1=1

TX-1XX-X-X
SHEET 1 OF 5