



Description	3
Product Assembly	4
Mounting instruction	9
Devices raised mounting	10
Devices flush mounting	18
Accessories.....	25
Technical Data.....	41
Typical Applications	45
Marking	47
Drawings.....	50
Index.....	67

Product Information

General notes

The indicators, illuminated pushbuttons, selector-, keylock switches or emergency-stop switches with spray-water protection at the front (IP 65) are modular and consist of an actuator and switching element.

In addition to the standard switching elements (gold-plated silver contact with universal soldering terminals), forced-opening, slow-make switching elements with gold or silver contacts with soldering terminals are available. EAO can also offer screw terminals on its slow make elements. Switching elements with soldering terminals can also be fitted with flat receptacle 2.8 x 0.5 mm

The front dimensions of the units in this series are 24 x 24 mm, 24 mm dia., 18 x 24 mm, 18 x 18 mm or 18 mm dia. For flush mounting the dimensions 25 mm dia., 24 x 30 mm or 24 x 24 mm can be supplied.

Mounting

All switch actuators are mounted from the front by pushing them through the mounting hole in the front panel. They are then fixed from the back with a fixing nut and the mounting tool Typ-Nr. 01-907. Max. tightening torque 50 Ncm.

The preassembled switching element with the connecting wires in a single plane can be clipped on afterwards. A range of assembly and service tools are available.

PCB mounting adaptors are available for universal solder terminal switching elements.

All raised profile actuators are provided with an anti-twist device.

Lenses

The flat or concave lenses are available in various colours and a transparent or translucent version. The lens surface is non-reflecting (matt). Round lenses for devices 24 mm dia. or 25 mm dia. can also be supplied in aluminium.

Marking

For further information about engraving, hot stamping and film inserts see part Marking.

Illumination

T1 ³/₄ midget groove LED's in red, blue, green, yellow and white or filament lamps give superb illumination and can be supplied in 6, 12, 24, or 48 V.

Luminosity and wave length scattering caused by the technology used in the LED manufacturing processes may lead to visual differences in our products.

Position indication

The status of a maintained action switch can be determined by the position of the lens.

Keylock switch

Standard lock (Index D). Standard lock number is 311. If the lock number is not specified, we will supply standard number 311.

An additional 134 special locks (Index X) are available on request. Master keys for lock numbers 311...445 may be ordered by quoting Typ-Nr. 31-989.300. Two keys are supplied with each keylock switch. Spare keys (Index D) for standard locks may be ordered by quoting Typ-Nr. 31-989.xxx (please state the lock number).

Emergency stop switche, foolproof with key to release

KABA safety lock. Standard lock number is 1001. Other lock numbers are available on request. Spare keys for KABA safety lock may be ordered under Typ-Nr. 14-987.xxx (please state the lock number).

Specimen order

Indicator :

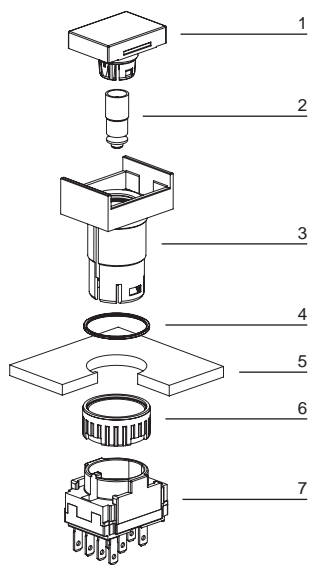
- Indicator complete, flush mounting, 24 x 24 mm 61-0000.02

Essential accessories :

- Lens plastic colourless transparent flush, 24 x 24 mm 61-9671.7
 - Single-LED T1 ³/₄ MG, 24 VDC, white diffuse 10-2J12.1069
 - Front bezel set for Indicator, flush mounting, plastic black, 24 x 24 mm 61-9930.0

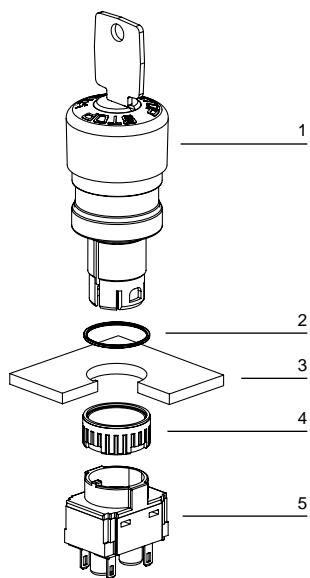
*We reserve the right to modify technical data
 All dimensions in mm*

Pushbutton illuminative, raised mounting



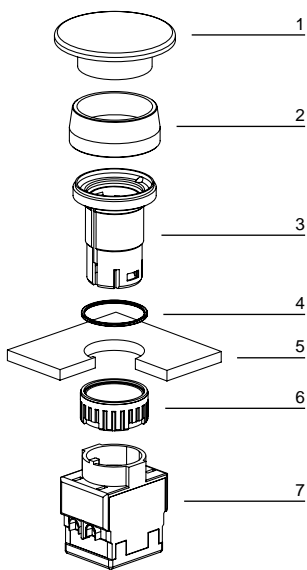
- 1 Lens
- 2 LED
- 3 Actuator housing
- 4 Sealing
- 5 Front plate
- 6 Fixing nut
- 7 Switching element

Emergency-stop pushbutton



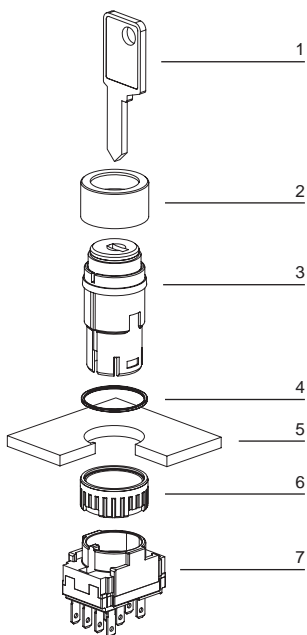
- 1 Emergency-stop pushbutton actuator
- 2 Sealing
- 3 Front plate
- 4 Fixing nut
- 5 Switching element

Mushroom-head pushbutton, raised mounting



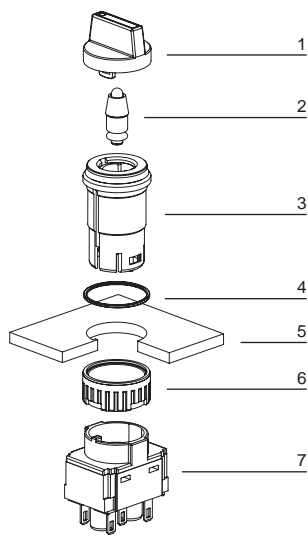
- 1 Mushroom-head cap
- 2 Front ring
- 3 Actuator housing
- 4 Sealing
- 5 Front plate
- 6 Fixing nut
- 7 Switching element

Keylock switch, raised mounting



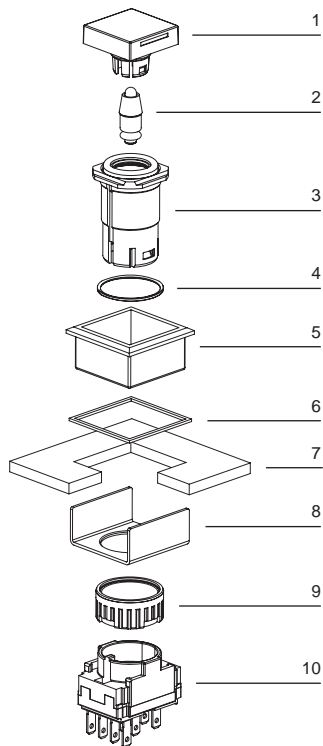
- 1 Key
- 2 Keylock front bezel
- 3 Keylock switch actuator
- 4 Sealing
- 5 Front plate
- 6 Fixing nut
- 7 Switching element

Selector switch illuminative, raised mounting



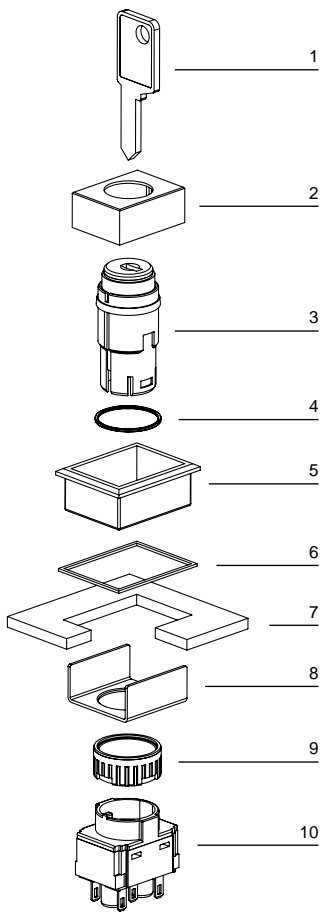
- 1 Lever
- 2 LED
- 3 Selector switch actuator
- 4 Sealing
- 5 Front plate
- 6 Fixing nut
- 7 Switching element

Pushbutton illuminative, flush mounting



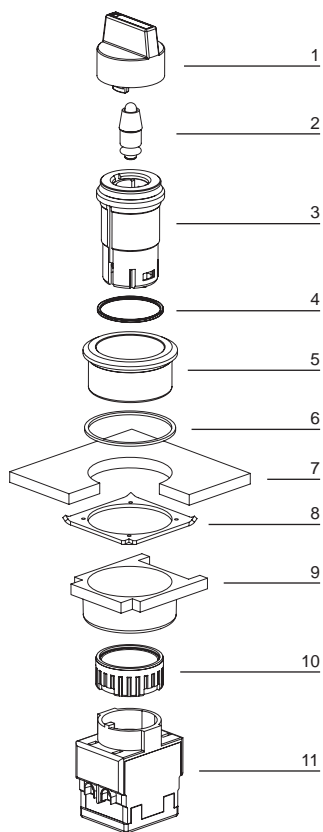
- 1 Lens
- 2 LED
- 3 Actuator housing
- 4 Sealing
- 5 Front bezel
- 6 Sealing
- 7 Front panel
- 8 Fixing bracket
- 9 Fixing nut
- 10 Switching element

Keylock switch, flush mounting



- 1 Key
- 2 Keylock front bezel
- 3 Keylock switch actuator
- 4 Sealing
- 5 Front bezel
- 6 Sealing
- 7 Front plate
- 8 Fixing bracket
- 9 Fixing nut
- 10 Switching element

Selector switch illuminative, flush mounting

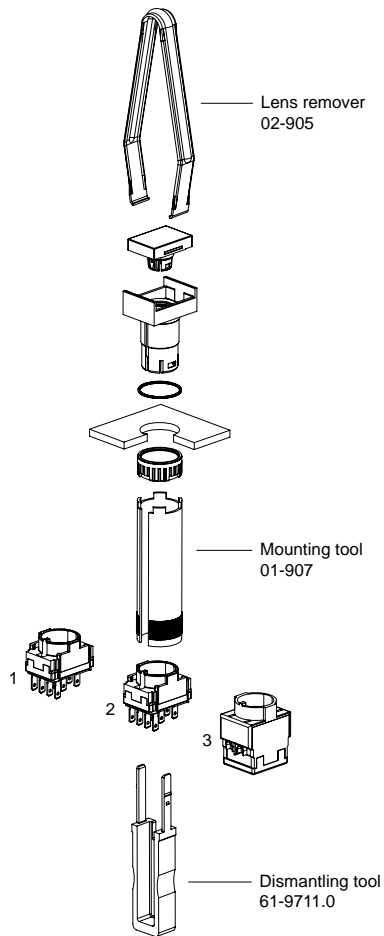


- 1 Lever
- 2 LED
- 3 Selector switch actuator
- 4 Sealing
- 5 Front bezel
- 6 Sealing
- 7 Front plate
- 8 Anti-twist ring
- 9 Thrust piece
- 10 Fixing nut
- 11 Switching element

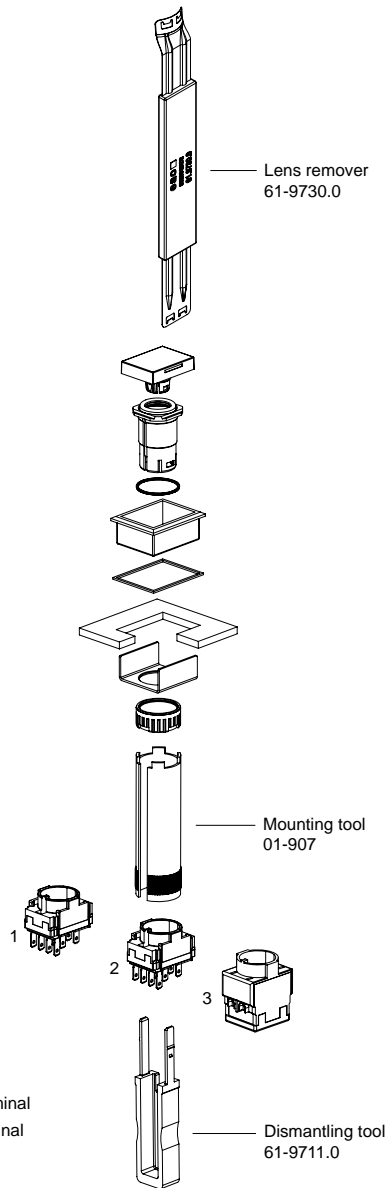
Tool set

Lens remover, Mounting tool, Dismantling tool with Lamp- and LED remover are part of the Tool set K61-999.100

raised mounting



flush mounting







- 1 Snap-action switching element with soldering terminal
- 2 Slow-make switching element with soldering terminal
- 3 Slow-make switching element with screw terminal

Indicator complete



Essential Accessories:

-  Front ring, raised mounting page 30
-  Lens plastic, raised mounting page 25
-  Single-LED page 37

	Front protection	Terminals	\varnothing 24 x 24 mm Typ-Nr.	\varnothing 18 x 18 mm Typ-Nr.	\varnothing 18 x 24 mm Typ-Nr.	\varnothing 24 mm Typ-Nr.	\varnothing 18 mm Typ-Nr.	Mounting dimensions	Technical drawing	Circuit drawing	
Indicator complete Actuator housing black	IP 65	S1	61-0050.02	61-0020.02	61-0030.02	61-0040.02	61-0010.02	1	3	4	0.005







Terminals: S1 = Soldering terminal (also pluggable 2.8 x 0.5 mm)


Mounting dimensions from page 55, Technical drawing from page 56, Circuit drawing from page 62

Indicator actuator



Essential Accessories:

-  Diode element page 33
-  Flasher element page 33
-  Front ring, raised mounting page 30
-  Lamp element page 32
-  Lens plastic, raised mounting page 25
-  Single-LED page 37





	Front protection	\varnothing 24 x 24 mm Typ-Nr.	\varnothing 18 x 18 mm Typ-Nr.	\varnothing 18 x 24 mm Typ-Nr.	\varnothing 24 mm Typ-Nr.	\varnothing 18 mm Typ-Nr.	Mounting dimensions	Technical drawing	Circuit drawing	
Indicator actuator Actuator housing black	IP 65	61-0059.0	61-0029.0	61-0039.0	61-0049.0	61-0019.0	1	12	4	0.005

Mounting dimensions from page 55, Technical drawing from page 56, Circuit drawing from page 62

Illuminated pushbutton actuator



Essential Accessories:

-  Front ring, raised mounting page 30
-  Lens plastic, raised mounting page 25
-  Single-LED page 37
-  Switching element for Pushbutton | Keylock- and Selector switch 2 positions page 34

	Front protection	Switching action	∅ 24 x 24 mm Typ-Nr.	∅ 18 x 18 mm Typ-Nr.	∅ 18 x 24 mm Typ-Nr.	∅ 24 mm Typ-Nr.	∅ 18 mm Typ-Nr.	Mounting dimensions	Technical drawing	Circuit drawing	
Illuminated pushbutton actuator Actuator housing black	IP 65	MA	61-1250.0	61-1220.0	61-1230.0	61-1240.0	61-1210.0	1	14	6	0.005
		M	61-1150.0	61-1120.0	61-1130.0	61-1140.0	61-1110.0	1	14	13	0.005
		M-MA	61-1350.0	61-1320.0	61-1330.0		61-1310.0	1	14	13	0.005

M-MA convertible from Momentary to Maintained action

Switching action: MA = Maintained action, M = Momentary action, M-MA = Momentary action-Maintained action

Mounting dimensions from page 55, Technical drawing from page 56, Circuit drawing from page 62


Emergency-stop pushbutton actuator, foolproof EN IEC 60947-5-5

Application as per EN 60204-1 and EN 418



Essential Accessories:

 Switching element for Emergency-stop pushbutton page 35

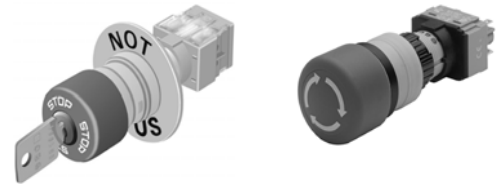
	Front protection	Switching action	Mushroom had cap	Marking	Ø 27 mm Typ-Nr.	Mounting dimensions	Technical drawing	Circuit drawing	
Emergency-stop pushbutton actuator, foolproof EN IEC 60947-5-5 Position indication ring black Key to unlock clockwise Standard lock 1001	IP 65	MA	Plastic red	Stop	61-5441.4/K	2	17	5	0.033
Position indication ring black Twist to unlock clockwise	IP 65	MA	Plastic red	Arrows	61-3440.4/1	2	17	5	0.020
				Stop	61-3440.4/2	2	17	5	0.020
Position indication ring black Twist to unlock clockwise with adaptor for mosaic	IP 65	MA	Plastic red	Arrows	61-3440.4/1S	2	17	5	0.021
Position indication ring black Twist to unlock clockwise with metal Fixing nut	IP 65	MA	Plastic red	Arrows	61-3440.4/D	2	17	5	0.020
Position indication ring green Twist to unlock clockwise	IP 65	MA	Plastic red	Arrows	61-3440.4/5	2	17	5	0.020

Other lock numbers on request

Switching action: MA = Maintained action

Mounting dimensions from page 55, Technical drawing from page 56, Circuit drawing from page 62

Emergency-stop pushbutton actuator, foolproof



Essential Accessories:

- Shopping cart icon Switching element for Emergency-stop pushbutton page 35

	Front protection	Switching action	Mushroom head cap	Marking	Ø 27 mm Typ-Nr.	Mounting dimensions	Technical drawing	Circuit drawing	
Emergency-stop pushbutton actuator, foolproof Position indication ring black Key to unlock clockwise Standard lock 1001	IP 65	MA	Plastic black	without	61-5441.0/K	2	17	5	0.033
Position indication ring black Twist to unlock clockwise	IP 65	MA	Plastic grey	Arrows	61-3440.4/8	2	17	5	0.020

Other lock numbers on request

Switching action: MA = Maintained action

Mounting dimensions from page 55, Technical drawing from page 56, Circuit drawing from page 62

Mushroom-head pushbutton actuator



Essential Accessories:

- Shopping cart icon Front ring, raised mounting page 30
- Shopping cart icon Mushroom-head cap page 26
- Shopping cart icon Switching element for Pushbutton | Keylock- and Selector switch 2 positions page 34

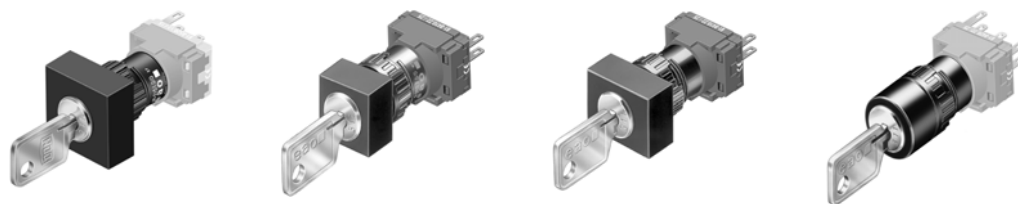
	Front protection	Switching action	Ø 32 mm Typ-Nr.	Mounting dimensions	Technical drawing	Circuit drawing	
Mushroom-head pushbutton actuator Actuator housing black	IP 65	MA	61-1240.0	2	13	6	0.005
		M	61-1140.0	2	13	13	0.005

Switching action: MA = Maintained action, M = Momentary action




Mounting dimensions from page 55, Technical drawing from page 56, Circuit drawing from page 62

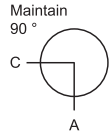
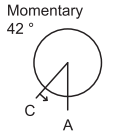
Keylock switch actuator 2 positions

if mounted with anti-twist device, the lug is on the left side



Essential Accessories:

-  Anti-twist ring page 39
-  Keylock front bezel, raised mounting page 27
-  Switching element for Pushbutton | Keylock- and Selector switch 2 positions page 34

	Front protection	Switching action	Key remove	Ø 24 x 24 mm Typ-Nr.	Ø 18 x 18 mm Typ-Nr.	Ø 18 x 24 mm Typ-Nr.	Ø 18 mm Typ-Nr.	Mounting dimensions	Technical drawing	Circuit drawing	
Maintain 90° 	IP 65	MA	A	61-2201.0/D	61-2201.0/D	61-2201.0/D	61-2201.0/D	1	15	17	0.065
			C	61-2203.0/D	61-2203.0/D	61-2203.0/D	61-2203.0/D	1	15	17	0.065
			C + A	61-2205.0/D	61-2205.0/D	61-2205.0/D	61-2205.0/D	1	15	17	0.065
Momentary 42° 	IP 65	M	A	61-2101.0/D	61-2101.0/D	61-2101.0/D	61-2101.0/D	1	15	16	0.065

Other lock numbers on request

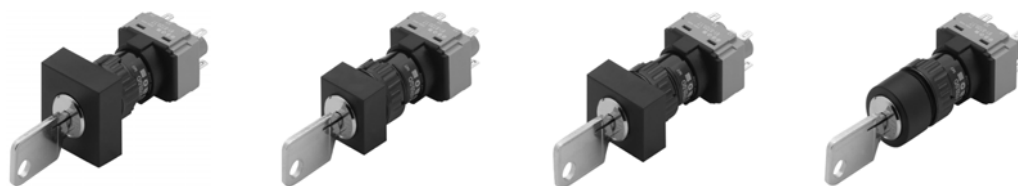
Anti-twist ring (not needed by using anti-twist device)

Switching action: MA = Maintained action, M = Momentary action




Mounting dimensions from page 55, Technical drawing from page 56, Circuit drawing from page 62

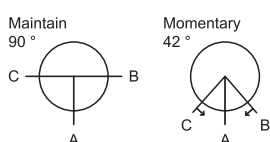
Keylock switch actuator 3 positions

if mounted with anti-twist device, the lug is on the left side



Essential Accessories:

-  Anti-twist ring page 39
-  Keylock front bezel, raised mounting page 27
-  Switching element for Keylock- and Selector switch 3 positions page 35



	Front protection	Switching action	Key remove	Ø 24 x 24 mm Typ-Nr.	Ø 18 x 18 mm Typ-Nr.	Ø 18 x 24 mm Typ-Nr.	Ø 18 mm Typ-Nr.	Mounting dimensions	Technical drawing	Circuit drawing	
Keylock switch actuator 3 positions Pos. C: Maintained action Pos. A: Basic position Pos. B: Maintained action Standard lock 311	IP 65	MA-O-MA	A	61-2601.0/D	61-2601.0/D	61-2601.0/D	61-2601.0/D	1	15	19	0.065
			A + B	61-2604.0/D	61-2604.0/D	61-2604.0/D	61-2604.0/D	1	15	19	0.065
			B	61-2602.0/D	61-2602.0/D	61-2602.0/D	61-2602.0/D	1	15	19	0.065
			C	61-2603.0/D	61-2603.0/D	61-2603.0/D	61-2603.0/D	1	15	19	0.065
			C + A	61-2605.0/D	61-2605.0/D	61-2605.0/D	61-2605.0/D	1	15	19	0.065
			C + A + B	61-2607.0/D	61-2607.0/D	61-2607.0/D	61-2607.0/D	1	15	19	0.065
Pos. C: Maintained action Pos. A: Basic position Pos. B: Momentary action Standard lock 311	IP 65	MA-O-M	A	61-2701.0/D	61-2701.0/D	61-2701.0/D	61-2701.0/D	1	15	18	0.065
			C	61-2703.0/D	61-2703.0/D	61-2703.0/D	61-2703.0/D	1	15	18	0.065
			C + A	61-2705.0/D	61-2705.0/D	61-2705.0/D	61-2705.0/D	1	15	18	0.065
Pos. C: Momentary action Pos. A: Basic position Pos. B: Maintained action Standard lock 311	IP 65	M-O-MA	A + B	61-2804.0/D	61-2804.0/D	61-2804.0/D	61-2804.0/D	1	15	15	0.065
			B	61-2802.0/D	61-2802.0/D	61-2802.0/D	61-2802.0/D	1	15	15	0.065
Pos. C: Momentary action Pos. A: Basic position Pos. B: Maintained action Standard lock 311	IP 65	M-O-MA	A	61-2801.0/D	61-2801.0/D	61-2801.0/D	61-2801.0/D	1	15	15	0.065
Pos. C: Momentary action Pos. A: Basic position Pos. B: Momentary action Standard lock 311	IP 65	M-O-M	A	61-2501.0/D	61-2501.0/D	61-2501.0/D	61-2501.0/D	1	15	14	0.065

Other lock numbers on request

Anti-twist ring (not needed by using anti-twist device)

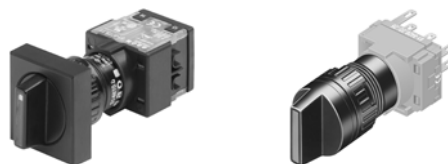
Switching action: MA = Maintained action, M = Momentary action

Mounting dimensions from page 55, Technical drawing from page 56, Circuit drawing from page 62





Selector switch actuator 2 positions

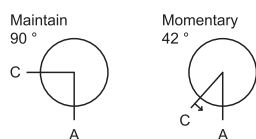
illuminative

if mounted with anti-twist device, the lug is on the left side



Essential Accessories:

-  Anti-twist ring page 39
-  Lever, raised mounting page 27
-  Single-LED page 37
-  Switching element for Pushbutton | Keylock- and Selector switch 2 positions page 34



	Front protection	Switching action	26 x 26 mm Typ-Nr.	24 x 24 mm Typ-Nr.	Ø 18 mm Typ-Nr.	Mounting dimensions	Technical drawing	Circuit drawing	
Selector switch actuator 2 positions Position C: Maintained action Position A: Basic position	IP 65	MA	61-4210.0	61-4210.0	61-4210.0	1	16	8	0.006
Position C: Momentary action Position A: Basic position	IP 65	M	61-4110.0	61-4110.0	61-4110.0	1	16	7	0.006

Anti-twist ring (not needed by using anti-twist device)

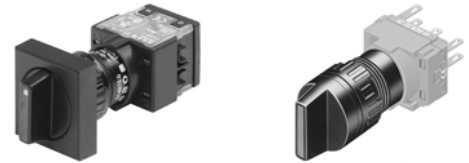
Switching action: MA = Maintained action, M = Momentary action

Mounting dimensions from page 55, Technical drawing from page 56, Circuit drawing from page 62






Selector switch actuator 3 positions

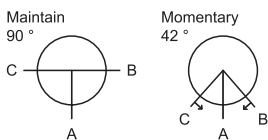
illuminative


if mounted with anti-twist device, the lug is on the left side



Essential Accessories:

-  Anti-twist ring page 39
-  Filament lamp page 37
-  Lever, raised mounting page 27
-  Single-LED page 37
-  Switching element for Keylock- and Selector switch 3 positions page 35



	Front protection	Switching action	\varnothing 26 x 26 mm Typ-Nr.	\varnothing 24 x 24 mm Typ-Nr.	\varnothing 18 mm Typ-Nr.	Mounting dimensions	Technical drawing	Circuit drawing	
Selector switch actuator 3 positions Position C: Maintained action Position A: Basic position Position B: Maintained action	IP 65	MA-O-MA	61-4610.0	61-4610.0	61-4610.0	1	16	12	0.006
Position C: Maintained action Position A: Basic position Position B: Momentary action	IP 65	MA-O-M	61-4710.0	61-4710.0	61-4710.0	1	16	11	0.006
Position C: Momentary action Position A: Basic position Position B: Maintained action	IP 65	M-O-MA	61-4810.0	61-4810.0	61-4810.0	1	16	10	0.006
Position C: Momentary action Position A: Basic position Position B: Momentary action	IP 65	M-O-M	61-4510.0	61-4510.0	61-4510.0	1	16	9	0.006




Switching action: MA = Maintained action, M = Momentary action


Mounting dimensions from page 55, Technical drawing from page 56, Circuit drawing from page 62

Indicator complete, flush mounting



Essential Accessories:

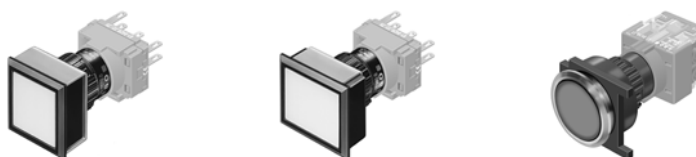
-  Front bezel set for Indicators and Illuminated pushbutton, flush mounting page 29
-  Lens plastic, flush mounting page 25
-  Single-LED page 37

	Front protection	Terminals	□ 24 x 24 mm Typ-Nr.	□ 24 x 30 mm Typ-Nr.	Ø 25 mm Typ-Nr.	Mounting dimensions	Technical drawing	Circuit drawing	
Indicator complete, flush mounting	IP 65	S1	61-0000.02	61-0000.02	61-0000.02	3	4	4	0.006







Terminals: S1 = Soldering terminal (also pluggable 2.8 x 0.5 mm)

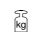
Mounting dimensions from page 55, Technical drawing from page 56, Circuit drawing from page 62

Indicator actuator, flush mounting



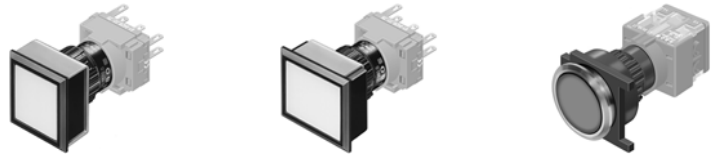
Essential Accessories:

-  Diode element page 33
-  Flasher element page 33
-  Front bezel set for Indicators and Illuminated pushbutton, flush mounting page 29
-  Lamp element page 32
-  Lens plastic, flush mounting page 25
-  Single-LED page 37





	Front protection	□ 24 x 24 mm Typ-Nr.	□ 24 x 30 mm Typ-Nr.	Ø 25 mm Typ-Nr.	Mounting dimensions	Technical drawing	Circuit drawing	
Indicator actuator, flush mounting	IP 65	61-0009.0	61-0009.0	61-0009.0	3	19	4	0.005


Mounting dimensions from page 55, Technical drawing from page 56, Circuit drawing from page 62

Illuminated pushbutton actuator, flush mounting



Essential Accessories:

-  Front bezel set for Indicators and Illuminated pushbutton, flush mounting page 29
-  Lens plastic, flush mounting page 25
-  Single-LED page 37
-  Switching element for Pushbutton | Keylock- and Selector switch 2 positions page 34

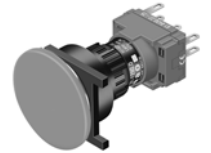
	Front protection	Switching action	Ø 24 x 24 mm Typ-Nr.	Ø 24 x 30 mm Typ-Nr.	Ø 25 mm Typ-Nr.	Mounting dimensions	Technical drawing	Circuit drawing	
Illuminated pushbutton actuator, flush mounting	IP 65	MA	61-1200.0	61-1200.0	61-1200.0	3	18	2	0.005
		M	61-1100.0	61-1100.0	61-1100.0	3	18	3	0.005
		M-MA	61-1300.0	61-1300.0	61-1300.0	3	18	3	0.005

M-MA convertible from Momentary to Maintained action




Switching action: MA = Maintained action, M = Momentary action, M-MA = Momentary action-Maintained action


Mounting dimensions from page 55, Technical drawing from page 56, Circuit drawing from page 62

Mushroom-head pushbutton actuator, flush mounting



Essential Accessories:

-  Front bezel set for Mushroom-head pushbutton, flush mounting page 29
-  Mushroom-head cap page 26
-  Switching element for Pushbutton | Keylock- and Selector switch 2 positions page 34

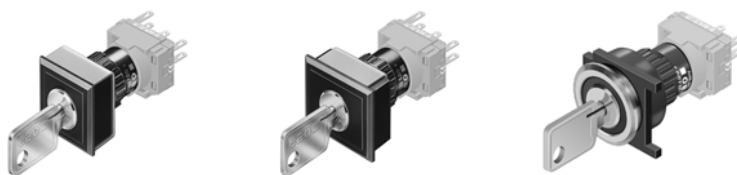
	Front protection	Switching action	Ø 32 mm Typ-Nr.	Mounting dimensions	Technical drawing	Circuit drawing	
Mushroom-head pushbutton actuator, flush mounting	IP 65	MA	61-1200.0	3	22	2	0.005
		M	61-1100.0	3	22	3	0.005
		M-MA	61-1300.0	3	22	3	0.005

M-MA convertible from Momentary to Maintained action





Switching action: MA = Maintained action, M = Momentary action, M-MA = Momentary action-Maintained action


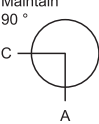
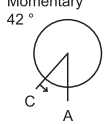
Mounting dimensions from page 55, Technical drawing from page 56, Circuit drawing from page 62

Keylock switch actuator 2 positions, flush mounting



Essential Accessories:

-  Anti-twist ring page 39
-  Front bezel set for Keylock switch, flush mounting page 30
-  Keylock front bezel, flush mounting page 27
-  Switching element for Pushbutton | Keylock- and Selector switch 2 positions page 34

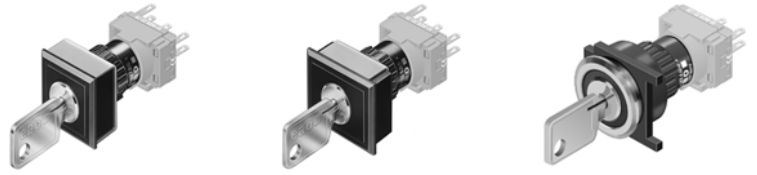
	Front protection	Switching action	Key remove	□ 24 x 24 mm Typ-Nr.	□ 24 x 30 mm Typ-Nr.	∅ 25 mm Typ-Nr.	Mounting dimensions	Technical drawing	Circuit drawing	
Maintain 90° 	IP 65	MA	A	61-2201.0/D	61-2201.0/D	61-2201.0/D	3	20	17	0.065
			C	61-2203.0/D	61-2203.0/D	61-2203.0/D	3	20	17	0.065
			C + A	61-2205.0/D	61-2205.0/D	61-2205.0/D	3	20	17	0.065
Momentary 42° 	IP 65	M	A	61-2101.0/D	61-2101.0/D	61-2101.0/D	3	20	16	0.065

Other lock numbers on request






Switching action: MA = Maintained action, M = Momentary action


Mounting dimensions from page 55, Technical drawing from page 56, Circuit drawing from page 62

Keylock switch actuator 3 positions, flush mounting



Essential Accessories:

-  Anti-twist ring page 39
-  Front bezel set for Keylock switch, flush mounting page 30
-  Keylock front bezel, flush mounting page 27
-  Keylock front bezel, raised mounting page 27
-  Switching element for Keylock- and Selector switch 3 positions page 35

	Front protection	Switching action	Key remove				Mounting dimensions	Technical drawing	Circuit drawing	
				∅ 24 x 24 mm Typ-Nr.	∅ 24 x 30 mm Typ-Nr.	∅ 25 mm Typ-Nr.				
Keylock switch actuator 3 positions, flush mounting Pos. C: Maintained action Pos. A: Basic position Pos. B: Maintained action Standard lock 311	IP 65	MA-O-MA	A	61-2601.0/D	61-2601.0/D	61-2601.0/D	3	23	19	0.065
			A + B	61-2604.0/D	61-2604.0/D	61-2604.0/D	3	20	19	0.065
			B	61-2602.0/D	61-2602.0/D	61-2602.0/D	3	20	19	0.065
			C	61-2603.0/D	61-2603.0/D	61-2603.0/D	3	20	19	0.065
			C + A	61-2605.0/D	61-2605.0/D	61-2605.0/D	3	20	19	0.065
			C + A + B	61-2607.0/D	61-2607.0/D	61-2607.0/D	3	20	19	0.065
			C + B	61-2606.0/D	61-2606.0/D	61-2606.0/D	3	20	19	0.065
Pos. C: Maintained action Pos. A: Basic position Pos. B: Momentary action Standard lock 311	IP 65	MA-O-M	A	61-2701.0/D	61-2701.0/D	61-2701.0/D	3	20	18	0.065
			C	61-2703.0/D	61-2703.0/D	61-2703.0/D	3	20	18	0.065
			C + A	61-2705.0/D	61-2705.0/D	61-2705.0/D	3	20	18	0.065
Pos. C: Momentary action Pos. A: Basic position Pos. B: Maintained action Standard lock 311	IP 65	M-O-MA	A + B	61-2804.0/D	61-2804.0/D	61-2804.0/D	3	20	15	0.065
			B	61-2802.0/D	61-2802.0/D	61-2802.0/D	3	20	15	0.065
Pos. C: Momentary action Pos. A: Basic position Pos. B: Maintained action Standard lock 311	IP 65	M-O-MA	A	61-2801.0/D	61-2801.0/D	61-2801.0/D	3	20	15	0.065
Pos. C: Momentary action Pos. A: Basic position Pos. B: Momentary action Standard lock 311	IP 65	M-O-M	A	61-2501.0/D	61-2501.0/D	61-2501.0/D	3	20	14	0.065

Other lock numbers on request

Switching action: MA = Maintained action, M = Momentary action






Mounting dimensions from page 55, Technical drawing from page 56, Circuit drawing from page 62

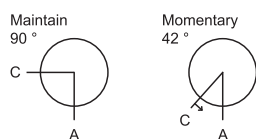
Selector switch actuator 2 positions, flush mounting

illuminative



Essential Accessories:

-  Anti-twist ring page 39
-  Front bezel set for Selector switch, flush mounting page 30
-  Lever, flush mounting page 28
-  Single-LED page 37
-  Switching element for Pushbutton | Keylock- and Selector switch 2 positions page 34



	Front protection	Switching action	24 x 24 mm Typ-Nr.	Ø 25 mm Typ-Nr.	Mounting dimensions	Technical drawing	Circuit drawing	
Selector switch actuator 2 positions, flush mounting Position C: Maintained action Position A: Basic position	IP 65	MA	61-4210.0	61-4210.0	3	21	8	0.006
Position C: Momentary action Position A: Basic position	IP 65	M	61-4110.0	61-4110.0	3	21	7	0.006

Switching action: MA = Maintained action, M = Momentary action

Mounting dimensions from page 55, Technical drawing from page 56, Circuit drawing from page 62

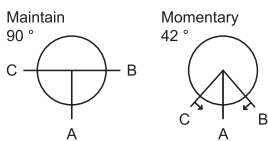
Selector switch actuator 3 positions, flush mounting

illuminative



Essential Accessories:

- Anti-twist ring page 39
- Front bezel set for Selector switch, flush mounting page 30
- Keylock front bezel, flush mounting page 27
- Lever, flush mounting page 28
- Single-LED page 37
- Switching element for Keylock- and Selector switch 3 positions page 35



	Front protection	Switching action	24 x 24 mm Typ-Nr.	Ø 25 mm Typ-Nr.	Mounting dimensions	Technical drawing	Circuit drawing	
Selector switch actuator 3 positions, flush mounting Position C: Maintained action Position A: Basic position Position B: Maintained action	IP 65	MA-O-MA	61-4610.0	61-4610.0	3 21	12	0.006	
Position C: Maintained action Position A: Basic position Position B: Momentary action	IP 65	MA-O-M	61-4710.0	61-4710.0	3 21	11	0.006	
Position C: Momentary action Position A: Basic position Position B: Maintained action	IP 65	M-O-MA	61-4810.0	61-4810.0	3 21	10	0.006	
Position C: Momentary action Position A: Basic position Position B: Momentary action	IP 65	M-O-M	61-4510.0	61-4510.0	3 21	9	0.006	

Switching action: MA = Maintained action, M = Momentary action

Mounting dimensions from page 55, Technical drawing from page 56, Circuit drawing from page 62

Potentiometer, flush mounting



	Front protection	Front bezel	Terminals	□ 24 x 24 mm Typ-Nr.	∅ 25 mm Typ-Nr.	Mounting dimensions	Technical drawing	Circuit drawing	
Potentiometer, flush mounting 10 k Ω (linear), 1 W, mechanical travel 300 °	IP 65	Plastic black	FR	61-4970.13		3	9	1	0.023
					61-4970.10	3	9	1	0.016

Cable length 300 mm


Terminals: FR = Flat ribbon cable

Mounting dimensions from page 55, Technical drawing from page 56, Circuit drawing from page 62

Front

Lens plastic, raised mounting


matt

	Lens	∅ 24 x 24 mm Typ-Nr.	∅ 18 x 18 mm Typ-Nr.	∅ 18 x 24 mm Typ-Nr.	∅ 24 mm Typ-Nr.	∅ 18 mm Typ-Nr.	
Lens plastic, raised mounting flush, illuminative	blue transparent	61-9351.6	61-9321.6	61-9331.6	61-9642.6	61-9311.6	0.002
	colourless transparent	61-9351.7	61-9321.7	61-9331.7	61-9642.7	61-9311.7	0.002
	green transparent	61-9351.5	61-9321.5	61-9331.5	61-9642.5	61-9311.5	0.002
	orange transparent	61-9351.3	61-9321.3	61-9331.3	61-9642.3	61-9311.3	0.002
	red transparent	61-9351.2	61-9321.2	61-9331.2	61-9642.2	61-9311.2	0.002
	smoked transparent	61-9351.1	61-9321.1	61-9331.1	61-9642.1	61-9311.1	0.002
	yellow transparent	61-9351.4	61-9321.4	61-9331.4	61-9642.4	61-9311.4	0.002
flush, non- illuminative	black opaque	61-9251.0	61-9221.0	61-9231.0		61-9211.0	0.002
	grey opaque	61-9251.8	61-9221.8	61-9231.8		61-9211.8	0.002
	white translucent	61-9251.9	61-9221.9	61-9231.9		61-9211.9	0.002
concave, illuminative	blue transparent		61-9326.6	61-9336.6			0.002
	colourless transparent		61-9326.7	61-9336.7			0.002
	green transparent		61-9326.5	61-9336.5			0.002
	orange transparent		61-9326.3	61-9336.3			0.002
	red transparent		61-9326.2	61-9336.2			0.002
concave, non- illuminative	black opaque		61-9226.0	61-9236.0			0.002
	grey opaque		61-9226.8	61-9236.8			0.002
	white translucent		61-9226.9	61-9236.9			0.002



Lens plastic, flush mounting


matt

	Lens	∅ 24 x 24 mm Typ-Nr.	∅ 24 x 30 mm Typ-Nr.	∅ 25 mm Typ-Nr.	
Lens plastic, flush mounting illuminative	blue transparent	61-9671.6	61-9681.6	61-9642.6	0.002
	colourless transparent	61-9671.7	61-9681.7	61-9642.7	0.002
	green transparent	61-9671.5	61-9681.5	61-9642.5	0.002
	orange transparent	61-9671.3	61-9681.3	61-9642.3	0.002
	red transparent	61-9671.2	61-9681.2	61-9642.2	0.002
	smoked transparent	61-9671.1	61-9681.1	61-9642.1	0.002
	yellow transparent	61-9671.4	61-9681.4	61-9642.4	0.002
non-illuminative	black opaque	61-9771.0	61-9781.0		0.002
	grey opaque	61-9771.8	61-9781.8		0.002
	white opaque	61-9771.9	61-9781.9		0.002



Marking plate for Lens plastic


can be hot stamped

	Marking plate	Typ-Nr.	
Marking plate for Lens plastic only applicable with Lens round Typ-Nr. 61-9642.X	Plastic colourless transparent	61-9707.7	0.001



Lens metal with window, raised mounting


matt

	Lens	Ø 24 mm Typ-Nr.	
Lens metal with window, raised mounting	Aluminium natural	61-9841.8A	0.002



Lens metal with window, flush mounting


matt

	Lens	Ø 25 mm Typ-Nr.	
Lens metal with window, flush mounting	Aluminium natural	61-9841.8A	0.002



Lens metal, raised mounting


matt

	Lens	Ø 24 mm Typ-Nr.	
Lens metal, raised mounting	Aluminium black	61-9841.0	0.002
	Aluminium blue	61-9841.6	0.002
	Aluminium green	61-9841.5	0.002
	Aluminium natural	61-9841.8	0.002
	Aluminium red	61-9841.2	0.002
	Aluminium yellow	61-9841.4	0.002




Lens metal, flush mounting

matt

	Lens	Ø 25 mm Typ-Nr.	
Lens metal, flush mounting	Aluminium black	61-9841.0	0.002
	Aluminium blue	61-9841.6	0.002
	Aluminium green	61-9841.5	0.002
	Aluminium natural	61-9841.8	0.002
	Aluminium red	61-9841.2	0.002
	Aluminium yellow	61-9841.4	0.002




Mushroom-head cap

	Mushroom had cap	Ø 32 mm Typ-Nr.	
Mushroom-head cap	Plastic black opaque	61-9593.0	0.004
	Plastic green opaque	61-9593.5	0.004
	Plastic red opaque	61-9593.2	0.004
	Plastic yellow opaque	61-9593.4	0.004




Keylock front bezel, raised mounting

	Keylock front bezel	⌀ 24 x 24 mm Typ-Nr.	⌀ 18 x 18 mm Typ-Nr.	⌀ 24 x 18 mm Typ-Nr.	Ø 18 mm Typ-Nr.	
Keylock front bezel, raised mounting	Plastic black	61-9250.0	61-9220.0	61-9230.0	61-9210.0	0.001




Keylock front bezel, flush mounting

	Keylock front bezel	⌀ 24 x 24 mm Typ-Nr.	⌀ 24 x 30 mm Typ-Nr.	Ø 25 mm Typ-Nr.	
Keylock front bezel, flush mounting	Plastic black	61-9220.0	61-9230.0	61-9210.0	0.001



Lever, raised mounting

with bar and marking dot

	Lever	Bar colour	Typ-Nr.	
Lever, raised mounting illuminative	Plastic black	blue	52-928.60	0.001
		green	52-928.50	0.001
		orange	52-928.30	0.001
		red	52-928.20	0.001
		yellow	52-928.40	0.001
	Plastic grey	blue	52-929.60	0.001
		green	52-929.50	0.001
		orange	52-929.30	0.001
		red	52-929.20	0.001
		yellow	52-929.40	0.001
non-illuminative	Plastic black	black	52-928.0	0.001
		white	52-928.9	0.001
	Plastic grey	grey	52-929.8	0.001
		white	52-929.9	0.001




Lever, flush mounting

	Lever	Bar colour	Typ-Nr.	
Lever, flush mounting illuminative	Plastic black	blue	61-9028.60	0.001
		green	61-9028.50	0.001
		orange	61-9028.30	0.001
		red	61-9028.20	0.001
		yellow	61-9028.40	0.001
	Plastic grey	blue	61-9029.60	0.001
		green	61-9029.50	0.001
		orange	61-9029.30	0.001
		red	61-9029.20	0.001
		yellow	61-9029.40	0.001
non-illuminative	Plastic black	black	61-9028.0	0.001
		white	61-9028.9	0.001
	Plastic grey	grey	61-9029.8	0.001
		white	61-9029.9	0.001



Legend plate

can be marked

	Typ-Nr.	Technical drawing	
Legend plate 30 x 42 mm, adhesive, Aluminium natural, Mounting hole size 22.5 mm dia.	704.962.0	10	0.002
42 x 42 mm, adhesive, Aluminium natural, Mounting hole size 22.5 mm dia.	704.962.5	10	0.003



Technical drawing from page 56

Legend frame

for devices 25 mm dia., flush mounting


	Typ-Nr.	Technical drawing	
Legend frame 30 x 50 mm, adhesive, Aluminium black	61-9980.0	11	0.001



Technical drawing from page 56

Legend plate insert


for Legend frame 61-9980.0

	Typ-Nr.	Technical drawing	
Legend plate insert 14.5 x 23.5 mm, adhesive, Aluminium black	704.968.1	11	0.001
14.5 x 23.5 mm, adhesive, Aluminium natural	704.968.0	11	0.001

Technical drawing from page 56




Front bezel square, raised mounting

	Front bezel	Typ-Nr.	
Front bezel square, raised mounting 24 x 24 mm, for Selector switch	Plastic black	52-950.0	0.001
26 x 26 mm, for Selector switch	Plastic black	52-952.0	0.001




Front bezel set for Indicators and Illuminated pushbutton, flush mounting

	Front bezel	Ø 24 x 24 mm Typ-Nr.	Ø 24 x 30 mm Typ-Nr.	Ø 25 mm Typ-Nr.	Mounting dimensions	
Front bezel set for Indicators and Illuminated pushbutton, flush mounting	Plastic black	61-9930.0	61-9931.0	61-9933.10	3	0.008
	Aluminium black			61-9933.1	3	0.006
	Aluminium natural			61-9933.0	3	0.006

Mounting dimensions from page 55




Front bezel set for Mushroom-head pushbutton, flush mounting

	Front bezel	Ø 32 mm Typ-Nr.	Ø 25 mm Typ-Nr.	Mounting dimensions	
Front bezel set for Mushroom-head pushbutton, flush mounting	Aluminium natural	61-9934.8		3	0.013
	Aluminium black		61-9933.1	3	0.006
	Aluminium natural		61-9933.0	3	0.006
	Plastic black		61-9933.10	3	0.008

Mounting dimensions from page 55




Front bezel set for Keylock switch, flush mounting

	Front bezel	□ 24 x 24 mm Typ-Nr.	□ 24 x 30 mm Typ-Nr.	Ø 25 mm Typ-Nr.	Mounting dimensions	
Front bezel set for Keylock switch, flush mounting	Plastic black	61-9930.0	61-9931.0	61-9932.10	3	0.008
	Aluminium black			61-9932.1	3	0.006
	Aluminium natural			61-9932.0	3	0.006



Mounting dimensions from page 55


Front bezel set for Selector switch, flush mounting

	Front bezel	□ 24 x 24 mm Typ-Nr.	Ø 25 mm Typ-Nr.	Mounting dimensions	
Front bezel set for Selector switch, flush mounting	Plastic black	61-9936.0		3	0.007
	Aluminium black		61-9932.1	3	0.006
	Aluminium natural		61-9932.0	3	0.006
	Plastic black		61-9932.10	3	0.008




Mounting dimensions from page 55

Front ring, raised mounting

	Front ring	Typ-Nr.	
Front ring, raised mounting for Actuator 24 mm dia.	Aluminium black	61-9600.0	0.003
	Aluminium natural	61-9600.1	0.003



Front protective cap

	Front protective cap	Typ-Nr.	
Front protective cap for front bezel set 24 x 30 mm, flush mounting	Silicone natural transparent	61-9927.2	0.001
	Silicone natural transparent	84-9103.7	0.001



ATTENTION

when using the front protection cover for push buttons the external sealing in the front bezel set and the silicone bellows in the actuator are to be removed !

Protective cover, raised mounting

	∅ 24 x 24 mm Typ-Nr.	∅ 18 x 18 mm Typ-Nr.	∅ 18 x 24 mm Typ-Nr.	Technical drawing	
Protective cover, raised mounting hinged, transparent, with means not for sealing	61-9920.0			5	0.004
hinged, transparent, with means for sealing		51-920		1	0.002
			51-925	2	0.002



Technical drawing from page 56

Protective cover, flush mounting

	∅ 24 x 24 mm Typ-Nr.	∅ 30 x 24 mm Typ-Nr.	∅ 25 mm Typ-Nr.	Mounting dimensions	Technical drawing	
Protective cover, flush mounting hinged, transparent, with means for sealing	61-9921.0			3 6		0.006
slide by side, with means not for sealing		61-9922.0		3 7		0.006
			61-9924.0	3 8		0.006



Mounting dimensions from page 55, Technical drawing from page 56

Blind plug, raised mounting

	Blind plug	∅ 24 x 24 mm Typ-Nr.	∅ 18 x 18 mm Typ-Nr.	∅ 18 x 24 mm Typ-Nr.	∅ 18 mm Typ-Nr.	Mounting dimensions	
Blind plug, raised mounting	Plastic black	61-9450.0	51-948.0	51-947.0	51-949.0	1	0.003



Mounting dimensions from page 55


Blind plug, flush mounting

	Blind plug	∅ 24 x 24 mm Typ-Nr.	∅ 24 x 30 mm Typ-Nr.	∅ 28 mm Typ-Nr.	Mounting dimensions	
Blind plug, flush mounting	Plastic black	61-9451.0	61-9452.0	61-9453.0	3	0.006




Mounting dimensions from page 55

Master key

	Typ-Nr.	
Master key Lock numbers 311 ... 445 (DOM)	31-989.300	0.006




Spare key

	Typ-Nr.	
Spare key Emergency-stop, standard lock 1001 (KABA)	14-987.1001	0.006
Key lock switch, standard lock 311 (DOM)	31-989.311	0.006



Other lock numbers on request

EMC Key protection cap

	Typ-Nr.	
EMC Key protection cap Plastic black, for lock type DOM	31-985.0	0.005



Backside

Lamp element

	Terminals	Typ-Nr.	Component layout		
			Component layout	Circuit drawing	
Lamp element	ST	61-8006.01	31	4	0.005
	S1	61-8006.02	3	4	0.005



Terminals: ST = Screw terminal, S1 = Soldering terminal (also pluggable 2.8 x 0.5 mm)
Component layout from page 50, Circuit drawing from page 62

Diode element

	Terminals	Typ-Nr.	Component layout		
			Circuit drawing		
Diode element	S1	61-8101.02	1	20	0.007
1 Diode					
2 Diodes	S1	61-8102.02	2	21	0.008



Terminals: S1 = Soldering terminal (also pluggable 2.8 x 0.5 mm)
 Component layout from page 50, Circuit drawing from page 62

Flasher element

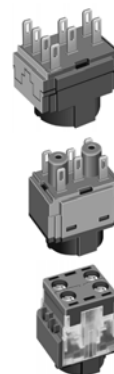
	Terminals	Typ-Nr.	Component layout		
Flasher element	S	61-8000.05	30		0.005
Operation voltage : 12 ... 28 VAC/DC \pm 10 %					



Further information in the Technical data and Typical applications
 Terminals: S = Soldering terminal
 Component layout from page 50

Switching element for Pushbutton | Keylock- and Selector switch 2 positions

	Diode (1N 4007)	Switch rating	Switching system	Contacts	Terminals	Contact material	Typ-Nr.	Component layout		Circuit drawing	kg		
Switching element for Pushbutton Keylock- and Selector switch 2 positions with lamp terminal	2 D	250 VAC, 5 A	SA	1 NO	S1	Au / Ag	61-8212.22	36	28	0.007			
						Ag	61-8212.12	36	28	0.007			
	-	250 VAC, 5 A	SM	1 NC	ST	Ag	61-8640.11	23	22	0.008			
					1 NC + 1 NO	S1	Ag	61-8670.17	14	23	0.008		
					1 NO	ST	Ag	61-8610.11	22	27	0.008		
						S1	Ag	61-8610.17	11	27	0.008		
					2 NC	S1	Ag	61-8650.17	15	24	0.008		
					2 NO	S1	Ag	61-8620.17	12	34	0.008		
				SA	1 NC	S1	Au / Ag	61-8440.22	4	23	0.007		
								Ag	61-8440.12	4	23	0.007	
						1 NC + 1 NO	S1	Au / Ag	61-8470.22	34	30	0.007	
								Ag	61-8470.12	34	30	0.007	
						1 NC + 2 NO	S1	Au / Ag	61-8490.22	35	32	0.007	
								Ag	61-8490.12	35	32	0.007	
					1 NO	S1	Au / Ag	61-8410.22	28	27	0.007		
							Ag	61-8410.12	28	27	0.007		
					2 NC	S1	Au / Ag	61-8450.22	5	24	0.007		
							Ag	61-8450.12	5	24	0.007		
					2 NC + 1 NO	S1	Au / Ag	61-8480.22	7	31	0.007		
							Ag	61-8480.12	7	31	0.007		
			42 VAC, 100 mA	SM	1 NC	S1	Au	61-8640.37	14	23	0.008		
							1 NC + 1 NO	S1	Au	61-8670.37	13	30	0.008
							1 NO	S1	Au	61-8610.37	11	27	0.008
							2 NC	S1	Au	61-8650.37	15	24	0.008
							2 NO	S1	Au	61-8620.37	12	34	0.008
	without lamp terminal	-	250 VAC, 5 A	SM	1 NC	ST	Ag	61-8645.11	25	22	0.008		
						1 NC + 1 NO	ST	Ag	61-8675.11	26	29	0.008	
					1 NO	ST	Ag	61-8615.11	24	26	0.008		
					2 NC	ST	Ag	61-8655.11	29	36	0.008		
					2 NO	ST	Ag	61-8625.11	27	33	0.008		



We offer a Dismantling tool Typ-Nr. 61-9711.0 for dismantling of the Switching element

Diode (1N 4007): D = Diode, - = without

Switching system: SA = Snap-action switching element, SM = Slow-make switching element


Contacts: NO = Normally open, NC = Normally closed

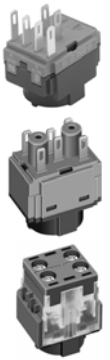
Terminals: S1 = Soldering terminal (also pluggable 2.8 x 0.5 mm), ST = Screw terminal

Contact material: Au = Gold, Ag = Silver

Component layout from page 50, Circuit drawing from page 62

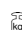
Switching element for Keylock- and Selector switch 3 positions

	Switch rating	Switching system	Contacts	Terminals	Contact material	Typ-Nr.	Component layout	Circuit drawing	
Switching element for Keylock- and Selector switch 3 positions with lamp terminal	250 VAC, 5 A	SM	1 NC + 1 NO	S1	Ag	61-8770.17	16	30	0.008
			2 NC	S1	Ag	61-8750.17	18	24	0.008
			2 NO	S1	Ag	61-8720.17	17	34	0.008
		SA	1 NC + 1 NO	S1	Au / Ag	61-8574.22	10	30	0.008
						61-8574.12	10	30	0.008
			2 NC	S1	Au / Ag	61-8550.22	8	24	0.008
						61-8550.12	8	24	0.008
			2 NO	S1	Au / Ag	61-8520.22	9	34	0.008
						61-8520.12	9	34	0.008
42 VAC, 100 mA	SM	1 NC + 1 NO	S1	Au	61-8770.37	16	30	0.008	
		2 NO	S1	Au	61-8720.37	9	34	0.008	
without lamp terminal	250 VAC, 5 A	SM	1 NC + 1 NO	ST	Ag	61-8775.11	26	37	0.008
			2 NC	ST	Ag	61-8755.11	29	36	0.008
			2 NO	ST	Ag	61-8725.11	27	33	0.008



We offer a Dismantling tool Typ-Nr. 61-9711.0 for dismantling of the Switching element
 Switching system: SM = Slow-make switching element, SA = Snap-action switching element
 Contacts: NC = Normally closed, NO = Normally open
 Terminals: S1 = Soldering terminal (also pluggable 2.8 x 0.5 mm), ST = Screw terminal
 Contact material: Ag = Silver, Au = Gold
 Component layout from page 50, Circuit drawing from page 62


Switching element for Emergency-stop pushbutton

	Switch rating	Switching system	Contacts	Terminals	Contact material	Typ-Nr.	Component layout	Circuit drawing		
Switching element for Emergency-stop pushbutton	250 VAC, 5 A	SM	1 NC	ST	Ag	61-8745.11	25	38	0.008	
				S1	Ag	61-8745.17	20	38	0.008	
			1 NC + 1 NO	ST	Ag	61-8775.11	26	37	0.008	
				S1	Ag	61-8775.17	19	37	0.008	
			2 NC	ST	Ag	61-8755.11	29	36	0.008	
				S1	Ag	61-8755.17	21	36	0.008	
		42 VAC, 100 mA	SM	1 NC	S1	Au	61-8745.37	20	38	0.008
				1 NC + 1 NO	S1	Au	61-8775.37	19	37	0.008
				2 NC	S1	Au	61-8755.37	21	36	0.008



General specifications for Switching element for Emergency-stop pushbutton : If not otherwise stated, certified according to EN IEC 60947-5-5. Further specifications in the Technical data
 Switching system: SM = Slow-make switching element
 Contacts: NC = Normally closed, NO = Normally open
 Terminals: ST = Screw terminal, S1 = Soldering terminal (also pluggable 2.8 x 0.5 mm)
 Contact material: Ag = Silver, Au = Gold
 Component layout from page 50, Circuit drawing from page 62


PCB plug-in base

	Terminals	Typ-Nr.	Component layout	
PCB plug-in base 15 x 23 x 9.4 mm for Snap-action Switching element, Indicator- and Diode element, Pins axial	P	61-9823	39	0.002
17.7 x 23.6 x 10.9 mm for Slow-make Switching element, Pins axial	P	61-9821.1	38	0.003
13.1 x 12.8 mm for Indicator complete	P	61-9820.1	37	0.003




Terminals: P = PCB terminal
Component layout from page 50

Multi-plug housing

	Typ-Nr.	
Multi-plug housing for Snap-action Switching element, max. 6 connections possible	61-9830	0.002




Flat receptacle

	Typ-Nr.	
Flat receptacle 2.8 x 0.5 mm for multi-plug housing	51-943.1	0.001
2.8 x 0.5 mm for Plug-in terminal	31-946	0.001




Insulation sleeve

	Typ-Nr.	
Insulation sleeve for Flat receptacles 31-946	31-929	0.001




Terminal cover

	Typ-Nr.	
Terminal cover for Indicator complete	61-9831.2	0.001
for Snap-action Switching element with soldering terminal	61-9830.2	0.002




Illumination

Filament lamp

	Socket	Operating voltage/-current	Typ-Nr.	
Filament lamp	T1 3/4 MG	12 VAC/DC, 75 mA	10-1309.1309	0.001
		14 VAC/DC, 80 mA	10-1310.1319	0.001
		18 VAC/DC, 40 mA	10-1311.1249	0.001
		24 VAC/DC, 35 mA	10-1312.1229	0.001
		28 VAC/DC, 30 mA	10-1313.1209	0.001
		28 VAC/DC, 40 mA	10-1313.1249	0.001
		36 VAC/DC, 20 mA	10-1316.1179	0.001
		36 VAC/DC, 30 mA	10-1316.1209	0.001
		48 VAC/DC, 20 mA	10-1319.1179	0.001
		48 VAC/DC, 25 mA	10-1319.1199	0.001
		6 VAC/DC, 125 mA	10-1306.1349	0.001
		6.3 VAC/DC, 200 mA	10-1307.1369	0.001




Single-LED

	Socket	Operating voltage/-current	Colour	Typ-Nr.	
Single-LED	T1 3/4 MG	12 VAC/DC, 7/14 mA	blue	10-2J09.1066	0.002
			green	10-2J09.1065	0.002
			red	10-2J09.1062	0.002
			white diffuse	10-2J09.1069	0.002
			yellow	10-2J09.1064	0.002
		24 VAC/DC, 7/14 mA	blue	10-2J12.1066	0.002
			green	10-2J12.1065	0.002
			red	10-2J12.1062	0.002
			white diffuse	10-2J12.1069	0.002
			yellow	10-2J12.1064	0.002
		28 VAC/DC, 7/14 mA	blue	10-2J13.1066	0.002
			green	10-2J13.1065	0.002
			red	10-2J13.1062	0.002
			white diffuse	10-2J13.1069	0.002
			yellow	10-2J13.1064	0.002
		48 VAC/DC, 4/8 mA	blue	10-2J19.1046	0.002
			green	10-2J19.1045	0.002
			red	10-2J19.1042	0.002
			white diffuse	10-2J19.1049	0.002
			yellow	10-2J19.1044	0.002
6 VDC, 15 mA	blue	10-2J06.3146	0.002		
	green	10-2J06.3145	0.002		
	red	10-2J06.3142	0.002		
	white diffuse	10-2J06.3149	0.002		
	yellow	10-2J06.3144	0.002		



Terminal plate empty

for fitting with series resistors and capacitors


	Typ-Nr.	
Terminal plate empty 10 spaces 125 x 60 x 15 mm	02-912.2	0.045
15 spaces 187.5 x 60 x 15 mm	02-912.3	0.090
20 spaces 250 x 60 x 15 mm	02-912.4	0.095
5 spaces 62.5 x 60 x 15 mm	02-912.1	0.025



Emergency-stop pushbutton


Emergency-stop label

Mounting hole size 16 mm dia.

	Marking	Typ-Nr.	
Emergency-stop label 43 mm dia., yellow	ARRET-D'URGENCE	61-9970.3	0.002
	EMERGENCY-STOP	61-9970.2	0.002
	NOT-AUS	61-9970.1	0.002
	without marking	61-9970.0	0.002




Emergency-stop protective shroud

	Typ-Nr.	
Emergency-stop protective shroud Aluminium anodized, yellow varnished	61-9965	0.036




Emergency-stop enclosures

	Typ-Nr.	
Emergency-stop enclosures with mounting hole size 16 mm dia., without anti- twist device	61-9480.5	0.099

Bottom grey similar RAL 7035; cover lead-sealable, yellow similar RAL 1004
4 openings for cable gland M16 or M20
Protection class IP 66
Dimension: 65 mm long, 65 mm wide, 57 mm high



Cable gland


	Typ-Nr.	
Cable gland M16, Plastic grey	61-9481.6	0.007
M20, Plastic grey	704.945.6	0.011



with traction relief; protection degree IP 68


Assembling

Fixing nut

	Typ-Nr.	
Fixing nut Metal, specifically for keylock switches	31-991	0.005
Plastic, standard delivery	61-9915.0	0.002




Anti-twist ring

	Typ-Nr.	
Anti-twist ring Mounting hole size 16 mm dia.	51-910	0.001
Mounting hole size 22.5 mm dia.	61-9912.0	0.002



Reducing ring


without Keylock- and Selector switch

	Typ-Nr.	
Reducing ring only for use of devices with Front size 24 x 24 mm and 24 mm dia., Mounting hole size 22.5 mm dia.	61-9960	0.003

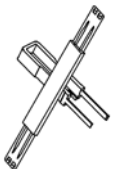


Tool set


consists of Lens remover, Lamp-and LED remover, Mounting tool, Dismantling tool

	Typ-Nr.	
Tool set	K61-999.100	0.048

for dismantling keep care of the enclosed Packing insert




Lens remover

	Typ-Nr.	
Lens remover for raised mounting	02-905	0.011
for flush mounting	61-9730.0	0.011



Lamp remover

	Typ-Nr.	 kg
Lamp remover	61-9740.0	0.003



CAUTION


A switching process might be released when replacing the lamp/LED !

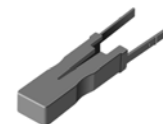
Mounting tool

	Typ-Nr.	 kg
Mounting tool for tightening or loosening of the Fixing nut	01-907	0.020




Dismantling tool

	Typ-Nr.	 kg
Dismantling tool for dismantling of the Switching element	61-9711.0	0.004




Flat receptacle remover

	Typ-Nr.	 kg
Flat receptacle remover for removing the Flat receptacle of the Multi-plug in housing	51-943.9	0.001



Enclosure

	Typ-Nr.	 kg
Enclosure with mounting hole size 16 mm dia., without anti- twist device	61-9480.6	0.099




Grey similar RAL 7035; cover lead-sealable

4 openings for cable gland M16 or M20

Protection class IP 66

Dimension: 65 mm long, 65 mm wide, 57 mm high

Cable gland

	Typ-Nr.	 kg
Cable gland M16, Plastic grey	61-9481.6	0.007
M20, Plastic grey	704.945.6	0.011



with traction relief; protection degree IP 68

Actuator with snap-action switching element

Switching system

Self-cleaning, double-break snap-action switching system with contact opening width 2 x 0.5 mm (switch with small contact opening width as per EN IEC 61058-1).

The switching elements are optionally equipped with the following switching functions :

One to three normally open (NO) or normally closed (NC), or any combination of NO and NC plus connections for T1 $\frac{3}{4}$ LED or lamp. The number of switching elements cannot exceed three.

The switching elements provided for the 3-position switch actuators are equipped with max. 2 NC or 2 NO or any combination. The number of switching elements cannot exceed two.

Material

Lens

Raised mounting Polymethylmethacrylat (PMMA), as per UL 94 HB, flush mounting Polycarbonat (PC), as per UL 94 V0, or Aluminium anodized

Front bezel

Polyetherimid (PEI), as per UL 94 V0, or Aluminium anodized

Front ring

Aluminium anodized

Material of contact

Silver or silver with gold plating

Switching element

Diallylphthalate (DAP), as per UL 94 V0 and Polyamide (PA 66), as per UL 94 V0

Actuator housing

Polyetherimide (PEI), as per UL 94 V0, self-extinguishing

Mechanical characteristics

Terminals

- Solder	rigid	flexible	superflexible
1 wire :	0.5 ... 1.5 mm ²	0.5 ... 0.75 mm ²	0.5 mm ²
2 wires :	0.75 mm ²	0.5 mm ²	

Actuating torque

Selector-/ Keylock switch : 2.5 ... 10 Ncm

Actuating force

Pushbutton : 2.7 ... 3.6 N

Actuating travel

Pushbutton : 3 mm

Selector-/ keylock switch	2 positions	3 positions
Momentary action :	approx. 42 °	approx. 2 x 42 °
Maintained action :	approx. 90 °	approx. 2 x 90 °

Rebound time

The rebound times apply to normal manual activation

Contact making : 3 ms
Contact breaking : 5 ms

Mechanical lifetime

as per DIN IEC 60512-5-6 and EN IEC 60947-5-1

Pushbutton maintained action :	1 million	cycles of operation
Pushbutton momentary action :	2 million	cycles of operation
Keylock switch :	50.000	cycles of operation
Selector switch :	100.000	cycles of operation

Electrical characteristics

Standards

The devices comply with : EN IEC 61058-1 and EN IEC 60947-5-1

Rated operational voltage

$U_e = 250$ VAC, as per EN IEC 60947-1

Rated insulation voltage

$U_i = 320$ VAC, as per EN IEC 60947-5-1

Rated impulse withstand voltage

$U_{imp} = 4$ kV, as per EN IEC 60947-1

Contact resistance

New state with silver contact : ≤ 100 m Ω
as per DIN IEC 60512-2-4, measured at 100 mA, 10 V

New state with gold plated contact : ≤ 50 m Ω
as per DIN IEC 60512-2-3, measured at 20 mV, 10 mA

Electrical life

≥ 50.000 cycles of operation at 250 VAC, 5 A, $\cos \phi 0.95$
as per EN IEC 60947-5-1

Electrostatic discharge

Keylock switch : 11 kV

Conventional free air thermal current

$I_{th} = 5$ A, as per EN IEC 60947-5-1
the maximum current in continuous operation and at ambient temperature must not exceed the quoted maximum values.

Switch rating

Switch rating AC with silver contact or silver contact with gold plating, service category AC-15, as per EN IEC 60947-5-1

Voltage :	125 VAC	250 VAC
Current :	2.5 A	2 A

Switch rating DC for silver contact or silver contact with gold plating, service category DC-13, as per EN IEC 60947-5-1

Voltage :	250 VDC
Current :	0.15 A

Recommended minimum operational data

Material of contact	Silver	Silver with gold plating
Voltage :	20 VAC/DC	5 VAC/DC
Current :	100 mA	10 mA

Electric strength

2500 VAC, 50 Hz, 1 min., as per DIN IEC 60512-2-11
between all terminals and earth

Overvoltage category

III, as per EN IEC 60947-5-1

Protection class

Class II, as per EN IEC 61058-1

Degree of pollution

3, as per EN IEC 60947-1

Environmental conditions

Storage temperature

-40 °C ... +85 °C

Operating temperature

-25 °C ... +55 °C

Protection degree

as per EN IEC 60529

Frontside IP 65 | backside IP 40

Shock resistance

(semi-sinusoidal)

max. 100 m/s², pulse width 11 ms, 3-axis, as per EN IEC 60068-2-27

Vibration resistance

(sinusoidal)

max. 100 m/s² at 10 Hz ... 500 Hz, as per EN IEC 60068-2-6

Climate resistance

Damp heat, cyclic :

96 hours, +25 °C / 97 %, +55 °C / 93 % relative humidity, as per EN IEC 60068-2-30

Damp heat, state :

56 days, +40 °C / 93 % relative humidity, as per EN IEC 60068-2-78

Rapid change of temperature :

100 cycles, -40 °C ... +80 °C, as per EN IEC 60068-2-14

Approvals

CE (Declaration of conformity)

CB (IEC 60947)

CB (IEC 61058)

CCA-NTR (EN 60947)

CSA

ENEC (EN 61058)

GOST

UL

VDE

German Lloyd

RoHS compliant

Actuator with slow-make switching element

Switching system

Double-break slow-make system, contact opening width 2 x 1.5 mm, with 2 x 2 contact points per switching element.

NC-contact elements in the slow-make elements fulfill requirements of switches with forced opening as per EN IEC 60947-5-1 2.17.

The slow-make elements are optionally obtainable with the following switching functions : 1 NO or 2 NO or 1 NC or 2 NC, 1 NO and 1 NC

Material

Lens

Raised mounting Polymethylmethacrylat (PMMA), as per UL 94 HB, flush mounting Polycarbonat (PC), as per UL 94 V0, or Aluminium anodized

Front bezel

Polyetherimid (PEI), as per UL 94 V0, or Aluminium anodized

Front ring

Aluminium anodized

Material of contact

Silver or gold (specified for operation for low level switching)

Switching element

Diallylphthalate (DAP), as per UL 94 V0 and Polyamide (PA 66), as per UL 94 V0

Actuator housing

Polyetherimide (PEI), as per UL 94 V0, self-extinguishing

Mechanical characteristics

Terminals

- Solder rigid flexible superflexible

1 wire : 0.5 ... 1.5 mm² 0.5 ... 0.75 mm² 0.5 mm²

2 wires : 0.75 mm² 0.5 mm²

- Screw

1 wire : 0.5 ... 1.5 mm² 0.5 ... 0.75 mm² 0.5 mm²

2 wires : 0.75 mm² 0.5 mm² 0.5 mm²

Actuating torque

Selector-/ Keylock switch : 4 ... 16 Ncm

Actuating force

Pushbutton : 3.5 ... 11 N

Emergency-stop switch : max. 65 N

Actuating travel

Pushbutton : 3 mm

Emergency-stop switch : 10 mm

Selector-/ keylock switch 2 positions 3 positions

Momentary action : approx. 42 ° approx. 2 x 42 °

Maintained action : approx. 90 ° approx. 2 x 90 °

Rebound time

The rebound times apply to normal manual activation

Contact making and contact breaking 2 ms

Mechanical lifetime

as per DIN IEC 60512-5-6 and EN IEC 60947-5-1

Pushbutton maintained action : 1 million cycles of operation

Pushbutton momentary action : 2 million cycles of operation

Keylock switch : 50.000 cycles of operation

Selector switch : 100.000 cycles of operation

Electrical characteristics

Standards

The devices comply with : EN IEC 61058-1 and EN IEC 60947-5-1, EN IEC 60947-5-5 (Emergency-stop)

Electrical life

≥50.000 cycles of operation at 250 VAC, 5 A, cos φ 0.95

as per EN IEC 60947-5-1

Switching element of Emergency-stop 6050 cycles of operation

Electrostatic discharge

Keylock switch : 11 kV

Electric strength

4000 VAC, 50 Hz, 1 min., as per DIN IEC 60512-2

between all terminals and earth

Overvoltage category

III, as per EN IEC 60947-5-1

Protection class

Class II, as per EN IEC 61058-1

Degree of pollution

3, as per EN IEC 60947-1

Electrical characteristics for silver contacts

Rated operational voltage

$U_e = 250 \text{ VAC}$, as per EN IEC 60947-1

Rated insulation voltage

$U_i = 320 \text{ VAC}$, as per EN IEC 60947-5-1

Rated impulse withstand voltage

$U_{imp} = 4 \text{ kV}$, as per EN IEC 60947-1

Contact resistance

New state : $\leq 50 \text{ m}\Omega$

as per DIN IEC 60512-2-4, measured at 100 mA, 10 V

Conventional free air thermal current

$I_{th} = 5 \text{ A}$, as per EN IEC 60947-5-1

the maximum current in continuous operation and at ambient temperature must not exceed the quoted maximum values.

Switch rating

Switch rating AC with silver contact, service category AC-15, as per EN IEC 60947-5-1

125 VAC, 2.5 A | 250 VAC, 2 A

Switch rating with silver contact, service category DC-13, as per EN IEC 60947-5-1

250 VDC, 0.15 A

Switch rating AC with silver contact and screw terminal, service category AC-15, as per EN IEC 60947-5-1

Voltage : 125 VAC 250 VAC

Current : 3 A 2 A

Switch rating with silver contact and screw terminal, service category DC-13, as per EN IEC 60947-5-1

Voltage : 250 VDC

Current : 0.2 A

Recommended minimum operational data

20 VAC/DC, 100 mA

Electrical characteristics for gold contacts

Rated operational voltage

$U_e = 50 \text{ VAC/DC}$, as per EN IEC 60947-5-1

Rated insulation voltage

$U_i = 320 \text{ VAC}$, as per EN IEC 60947-5-1

Rated impulse withstand voltage

$U_{imp} = 0.8 \text{ kV}$, as per EN IEC 60947-1

Contact resistance

New state : $\leq 50 \text{ m}\Omega$

as per DIN IEC 60512-2-4, measured at 20 mV, 10 mA

Conventional free air thermal current

$I_{th} = 3 \text{ A}$, as per EN IEC 60947-5-1

the maximum current in continuous operation and at ambient temperature must not exceed the quoted maximum values.

Switch rating

Switch rating AC with gold contact, service category AC-15, as per EN IEC 60947-5-1

Voltage : 50 VAC

Current : 0.5 A

Switch rating with gold contact, service category DC-13, as per EN IEC 60947-5-1

Voltage : 50 VDC

Current : 0.1 A

Recommended minimum operational data

Voltage : 10 mVAC/DC

Current : 2 mA

Recommended operational data

Voltage : 5 VDC 12 VDC 24 V DC

Current : 10 ... 20 mA 5 ... 10 mA 3 ... 5 mA

Environmental conditions

Storage temperature

-40 °C ... +85 °C

Operating temperature

-25 °C ... +55 °C

Protection degree

as per EN IEC 60529

Frontside IP 65 | backside IP 40

Shock resistance

(semi-sinusoidal)

max. 100 m/s², pulse width 11 ms, 3-axis, as per EN IEC 60068-2-27

Vibration resistance

(sinusoidal)

max. 100 m/s² at 10 Hz ... 500 Hz, as per EN IEC 60068-2-6

Climate resistance

Damp heat, cyclic :

96 hours, +25 °C / 97 %, +55 °C / 93 % relative humidity, as per EN IEC 60068-2-30

Damp heat, state :

56 days, +40 °C / 93 % relative humidity, as per EN IEC 60068-2-78

Rapid change of temperature :

100 cycles, -40 °C ... +80 °C, as per EN IEC 60068-2-14

Approvals

CE (Declaration of conformity)

CB (IEC 60947)

CB (IEC 61058)

CCA-NTR (EN 60947)

ENEC (EN 61058)

GOST

SEV

UL

VDE

German Lloyd

RoHS compliant

Actuator with flasher element

Material

Lens

Raised mounting Polymethylmethacrylat PMMA, as per UL 94 HB,
flush mounting Polycarbonat (PC), as per UL 94 V0

Actuator housing

Product Assembly

Mechanical characteristics

Terminals

Soldering terminal

Electrical characteristics

Illumination

Filament lamp	14 V AC/DC	28 VAC/DC
Power consumption :	80 mA	44 mA
Single-LED	12 VAC/DC	28 VAC/DC
Power consumption :	15 mA	18 mA

Flashing frequency

1 Hz \pm 0.25 Hz

Pulse duty factor

approx. 50 %

Operating voltage

12 ... 28 VAC/DC \pm 10 %

Environmental conditions

Operating temperature

0 °C ... +45 °C

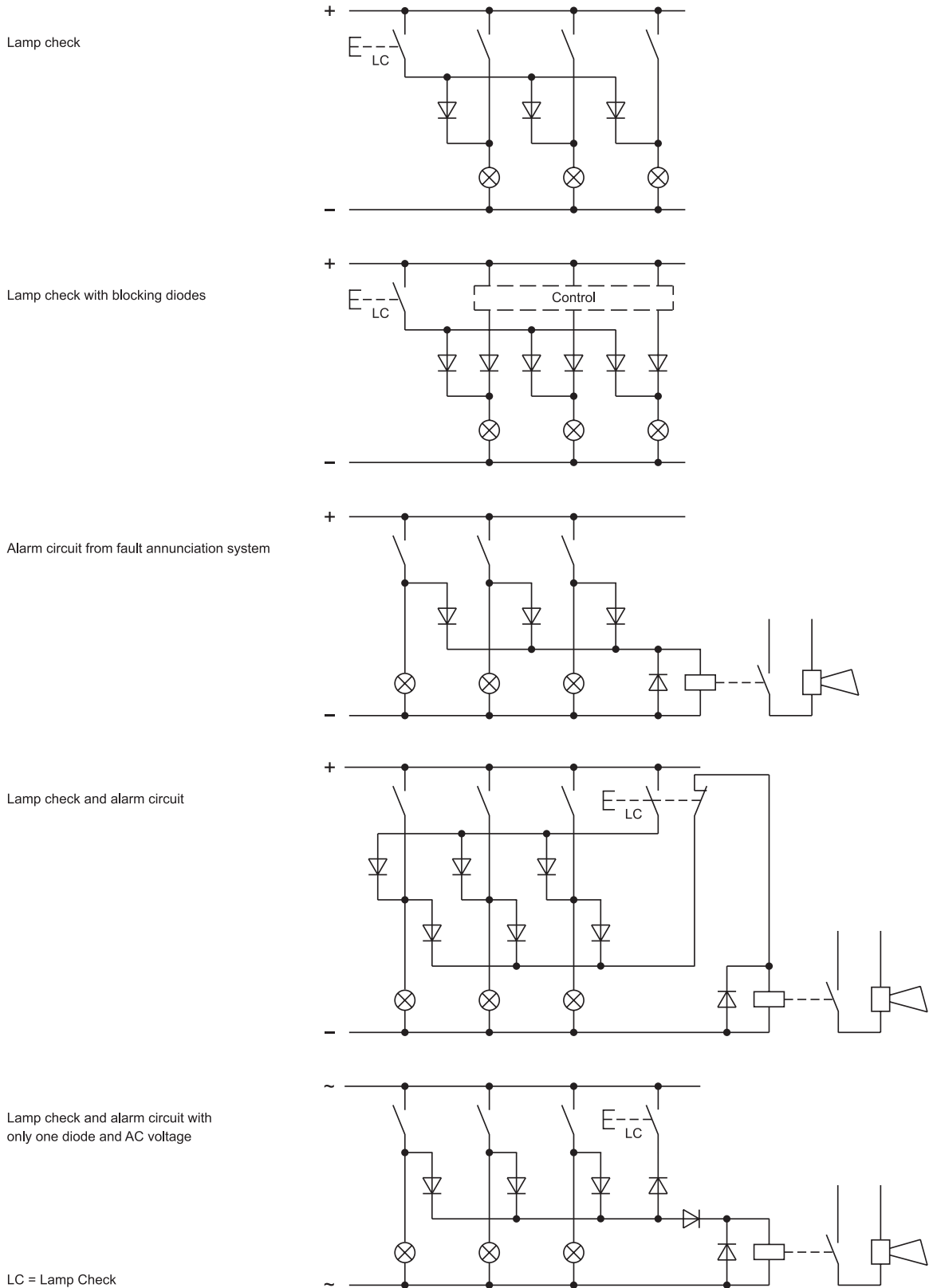
Protection degree

as per EN IEC 60529

Frontside IP 65 | backside IP 40

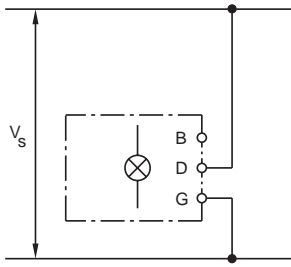
Diode element

When indicators and illuminated pushbuttons equipped with diodes, the user is able to perform a lamp check or wire an alarm circuit simply with a considerable saving of space.

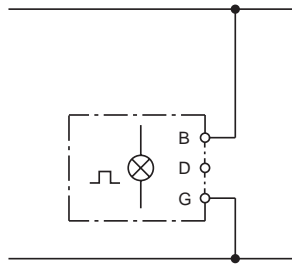


Flasher element

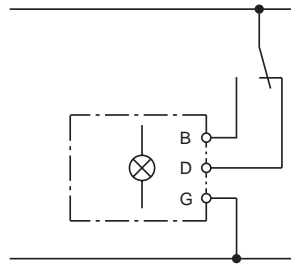
Do not connect terminal B and D simultaneously when powered up. When operating with DC voltage terminal G must have positive polarity.



Continuous light



Flashing light



Flashing- or continuous light

General notes

Typefaces

In addition to the most commonly used world languages, in DIN 1451-3 close spacing, other typefaces are available as Scandinavian, Slavic, Greek, Russian and Polish.

Symbols

For larger series it is worth considering markings by means of hot stamping or laser engraving. We will be pleased to advise you.

Color filling of engraving or hot stamping

Red, blue and black lenses are filled with white colour. Other colour lenses are filled in black.

Film inserts

Instead of using engraving the lenses can be fitted with transparent film inserts, as an alternative.

In the case of use of a smoke-black lens the fitted film becomes readable only if the lamp is on.

The film thickness is 0.2 mm.

For lenses 24 mm and 25 mm dia. with Typ-Nr. 619642.x the marking takes place directly on the text plate, Typ-Nr. 61-9707.7, instead of a film insert.

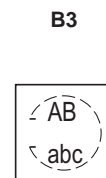
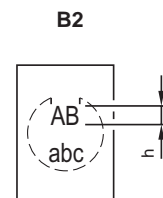
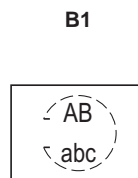
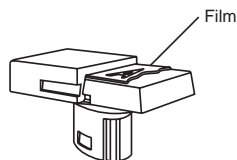
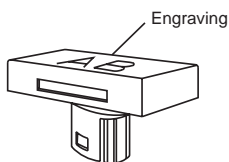
Mounting

Important : Consider pushbutton mounting orientation before specifying engraving characters !

Lenses for Indicators | Illuminated pushbuttons, flush mounting

All dimensions in mm

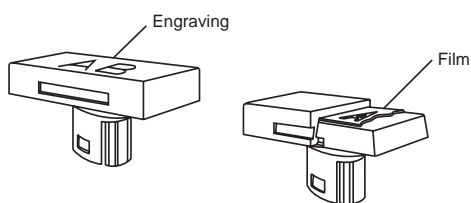
Front size	Film insert max. size	Height of letters h	Number of lines	Number of (target value) capital letters per line	Number of (target value) small letters per line	Image
24 x 24	15.1 x 15.1	2.5	4	8 - 9	9	B3
		3.0	3	7 - 8	8	B3
		4.0	2	4 - 5	5	B3
		5.0	2	4	4 - 5	B3
		6.0	1	4	4	B3
24 x 30	15.1 x 21	2.5	4	12	13	B1
		3.0	5	8 - 9	9	B2
			4	7 - 8	8	B2
		4.0	2	7	8	B1
			3	4 - 5	5	B2
		5.0	2	5 - 6	6	B1
				4	4 - 5	B2
		6.0	1	4 - 5	5	B1
				3	3 - 4	B2
		8.0	1	3 - 4	3 - 4	B1
2 - 3	2 - 3			B2		
25 dia.	Marking plate	2.5	3	6	6	B4
		3.0	2	5	6	B4
		4.0	2	3	4	B4
		5.0	1	2	3	B4
		6.0	1	2	3	B4
		8.0	1	2	2	B4



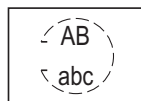
Lenses for Indicators | Illuminated pushbuttons, raised mounting

All dimensions in mm

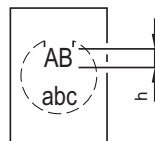
Front size	Film insert max. size	Height of letters h	Number of lines	Number of (target value) capital letters per line	Number of (target value) small letters per line	Image	
18 dia.	12.8 dia.	2.5		6	6	B4	
		3.0	2	5	6	B4	
		4.0	2	3	4	B4	
		5.0	1	2	3	B4	
		6.0	1	2	3	B4	
		8.0	1	2	2	B4	
18 x 18	12.7 x 12.7	2.5	4	7 - 8	8	B3	
		3.0	3	6 - 7	7	B3	
		4.0	2	4 - 5	5	B3	
		5.0	2	3 - 4	4	B3	
		6.0	1	3	3 - 4	B3	
		8.0	1	2 - 3	2 - 3	B3	
18 x 24	12.7 x 18.7	2.5	4	11	12	B1	
			5	7 - 8	8	B2	
		3.0	3	9 - 10	10 - 11	B1	
			4	6 - 7	7	B2	
		4.0	2	7	7 - 8	B1	
			3	4 - 5	5	B2	
		5.0	2		5 - 6	6	B1
					3 - 4	4	B2
		6.0	1		4 - 5	5	B1
					3	3 - 4	B2
		8.0	1		3 - 4	3 - 4	B1
					2 - 3	2 - 3	B2
24 dia.	Marking plate	2.5	3	6	6	B4	
		3.0	2	5	6	B4	
		4.0	2	3	4	B4	
		5.0	1	2	3	B4	
		6.0	1	2	3	B4	
		8.0	1	2	2	B4	
24 x 24	16.9 x 16.9	2.5	4	9	10	B3	
		3.0	3	7 - 8	9	B3	
		4.0	2	4 - 5	5	B3	
		5.0	2	4	4 - 5	B3	
		6.0	1	4	4	B3	
		8.0	1	2	2	B3	



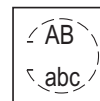
B1



B2



B3



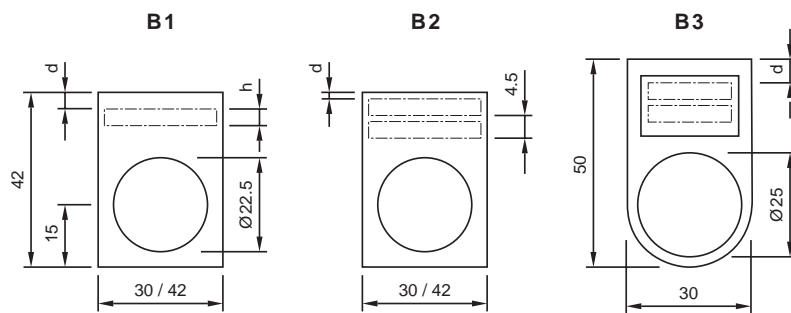
B4



Legend plates with mounting hole 22.5 mm dia

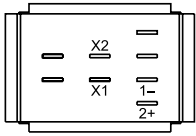
All dimensions in mm

Dimension	Height of letters h	Number of lines	Number of (target value) letters per line	Line spacing d	Image
30 x 42	3.0	1	14	4.5	B1
		2	14	2	B2
	4.0	1	10	4	B1
	8.0	1	5	2	B1
30 x 50	3.0	1	11	8.5	B3
		2	11	6	B3
	4.0	1	7	10	B3
	8.0	1	4	6	B3
42 x 42	3.0	1	20	4.5	B1
		2	20	2	B2
	4.0	1	14	4	B1
	8.0	1	7	2	B1

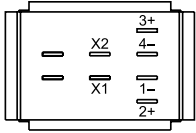


Component layout

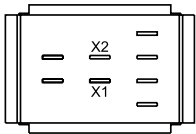
1 Diode element page 33



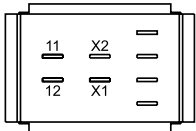
2 Diode element page 33



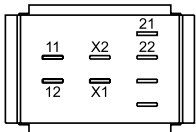
3 Lamp element page 32



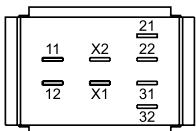
4 Switching element for Pushbutton | Keylock- and Selector switch 2 positions page 34



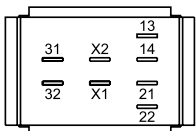
5 Switching element for Pushbutton | Keylock- and Selector switch 2 positions page 34



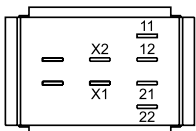
6 Switching element for Pushbutton | Keylock- and Selector switch 2 positions page 34



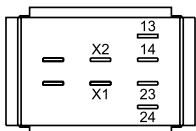
7 Switching element for Pushbutton | Keylock- and Selector switch 2 positions page 34



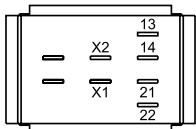
8 Switching element for Keylock- and Selector switch 3 positions page 35



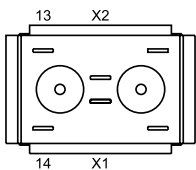
9 Switching element for Keylock- and Selector switch 3 positions page 35



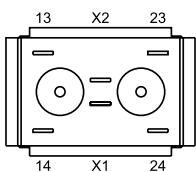
10 Switching element for Keylock- and Selector switch 3 positions page 35



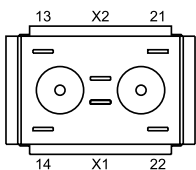
11 Switching element for Pushbutton | Keylock- and Selector switch 2 positions page 34



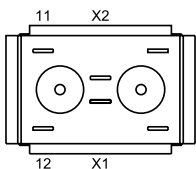
12 Switching element for Pushbutton | Keylock- and Selector switch 2 positions page 34



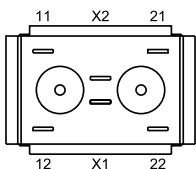
13 Switching element for Pushbutton | Keylock- and Selector switch 2 positions page 34



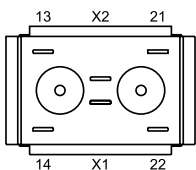
14 Switching element for Pushbutton | Keylock- and Selector switch 2 positions page 34



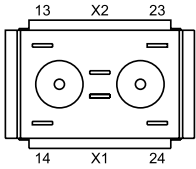
15 Switching element for Pushbutton | Keylock- and Selector switch 2 positions page 34



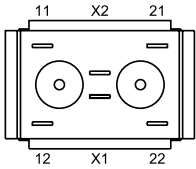
16 Switching element for Keylock- and Selector switch 3 positions page 35



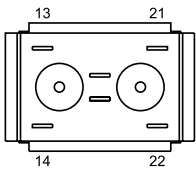
17 Switching element for Keylock- and Selector switch 3 positions page 35



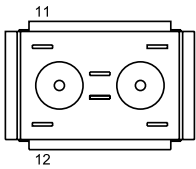
18 Switching element for Keylock- and Selector switch 3 positions page 35



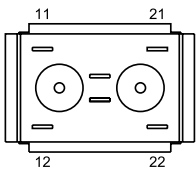
19 Switching element for Emergency-stop pushbutton page 35



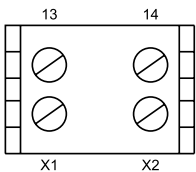
20 Switching element for Emergency-stop pushbutton page 35



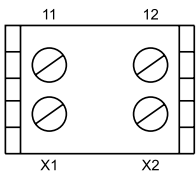
21 Switching element for Emergency-stop pushbutton page 35



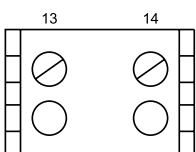
22 Switching element for Pushbutton | Keylock- and Selector switch 2 positions page 34



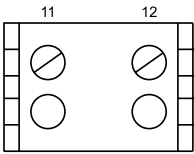
23 Switching element for Pushbutton | Keylock- and Selector switch 2 positions page 34



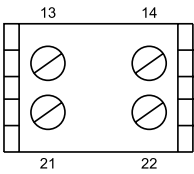
24 Switching element for Pushbutton | Keylock- and Selector switch 2 positions page 34



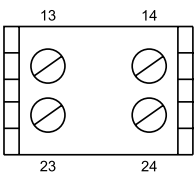
25 Switching element for Pushbutton | Keylock- and Selector switch 2 positions page 34 | Switching element for Emergency-stop pushbutton page 35



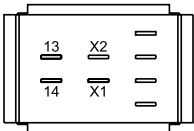
26 Switching element for Pushbutton | Keylock- and Selector switch 2 positions page 34 | Switching element for Keylock- and Selector switch 3 positions page 35 | Switching element for Emergency-stop pushbutton page 35



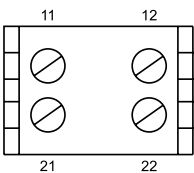
27 Switching element for Pushbutton | Keylock- and Selector switch 2 positions page 34 | Switching element for Keylock- and Selector switch 3 positions page 35



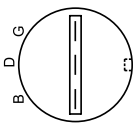
28 Switching element for Pushbutton | Keylock- and Selector switch 2 positions page 34



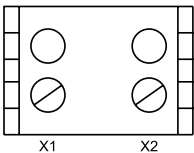
29 Switching element for Pushbutton | Keylock- and Selector switch 2 positions page 34 | Switching element for Keylock- and Selector switch 3 positions page 35 | Switching element for Emergency-stop pushbutton page 35



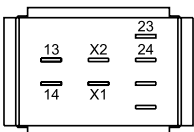
30 Flasher element page 33



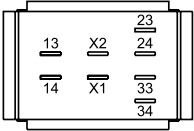
31 Lamp element page 32



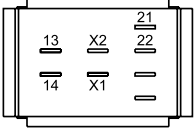
32 Switching element for Pushbutton | Keylock- and Selector switch 2 positions page 34



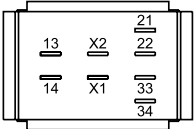
33 Switching element for Pushbutton | Keylock- and Selector switch 2 positions page 34



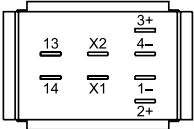
34 Switching element for Pushbutton | Keylock- and Selector switch 2 positions page 34



35 Switching element for Pushbutton | Keylock- and Selector switch 2 positions page 34

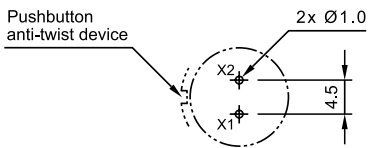


36 Switching element for Pushbutton | Keylock- and Selector switch 2 positions page 34



37 PCB plug-in base page 36

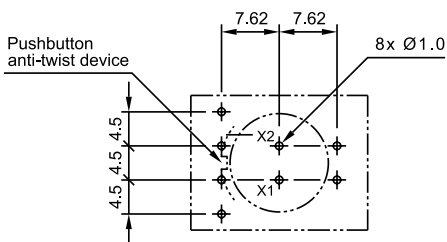
Drilling plan (Element side)
Through-connection recommended



Libraries for the PCB layout-system p-cad 200X see : www.pcad.com/recources/libraries Third-party Libraries

38 PCB plug-in base page 36

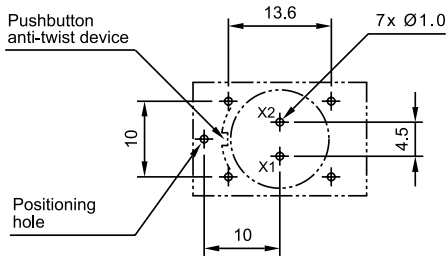
Drilling plan (Elementside)
Through-connection recommended



Libraries for the PCB layout-system p-cad 200X see : www.pcad.com/recources/libraries Third-party Libraries

39 PCB plug-in base page 36

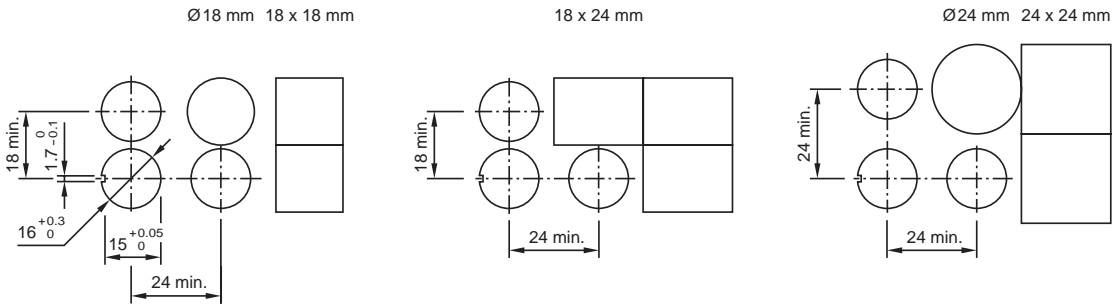
Drilling plan (Elementside)
Trough-connection recommended



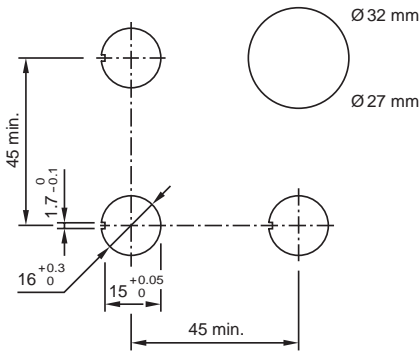
Libraries for the PCB layout-system p-cad 200X see : www.pcad.com/recources/libraries Third-party Libraries

Mounting dimensions

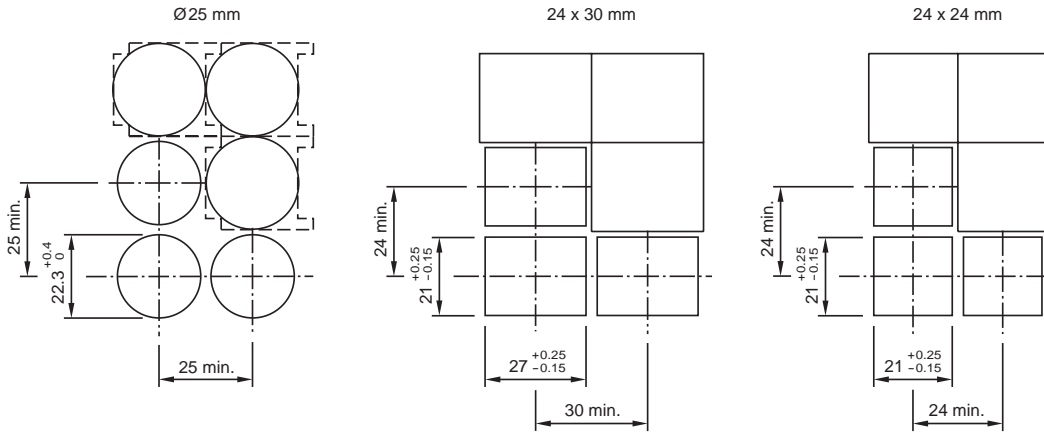
1 Indicator complete page 10 | Indicator actuator page 10 | Illuminated pushbutton actuator page 11 | Keylock switch actuator 2 positions page 14 | Keylock switch actuator 3 positions page 15 | Selector switch actuator 2 positions page 16 | Selector switch actuator 3 positions page 17 | Blind plug, raised mounting page 31



2 Emergency-stop pushbutton actuator, foolproof EN IEC 60947-5-5 page 12 | Emergency-stop pushbutton actuator, foolproof page 13 | Mushroom-head pushbutton actuator page 13

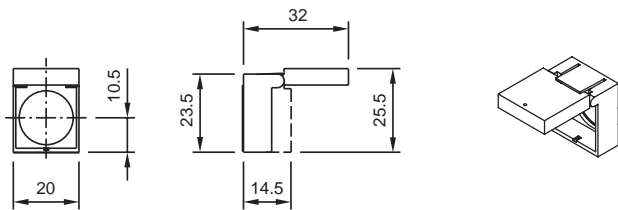


3 Indicator complete, flush mounting page 18 | Indicator actuator, flush mounting page 18 | Illuminated pushbutton actuator, flush mounting page 19 | Mushroom-head pushbutton actuator, flush mounting page 19 | Keylock switch actuator 2 positions, flush mounting page 20 | Keylock switch actuator 3 positions, flush mounting page 21 | Selector switch actuator 2 positions, flush mounting page 22 | Selector switch actuator 3 positions, flush mounting page 23 | Potentiometer, flush mounting page 24 | Front bezel set for Indicators and Illuminated pushbutton, flush mounting page 29 | Front bezel set for Mushroom-head pushbutton, flush mounting page 29 | Front bezel set for Keylock switch, flush mounting page 30 | Front bezel set for Selector switch, flush mounting page 30 | Protective cover, flush mounting page 31 | Blind plug, flush mounting page 31

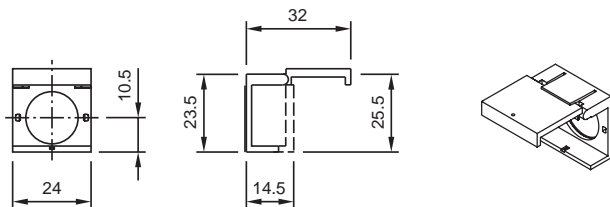


Technical drawing

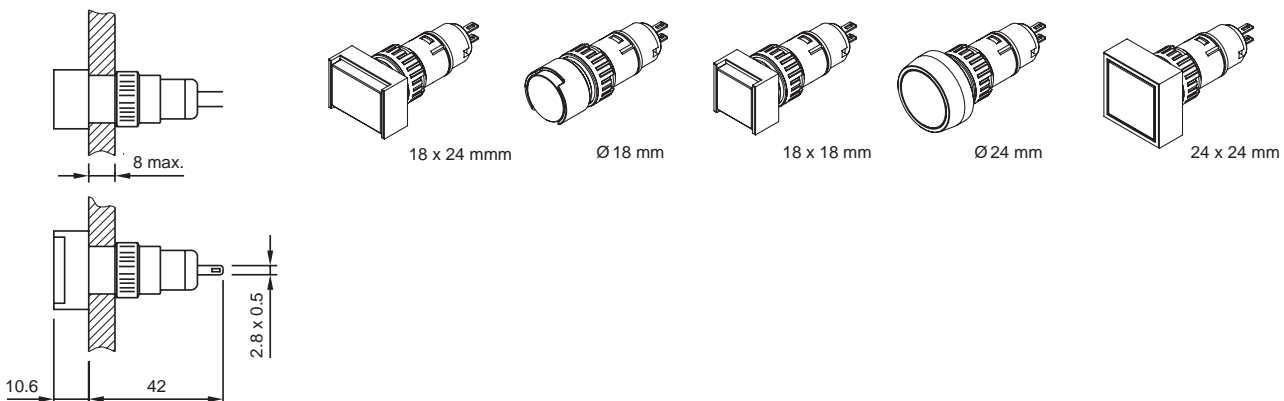
1 Protective cover, raised mounting page 31



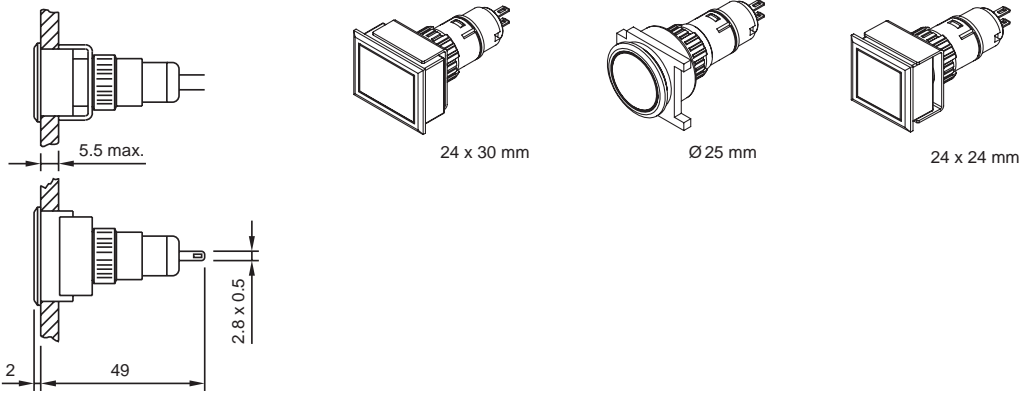
2 Protective cover, raised mounting page 31



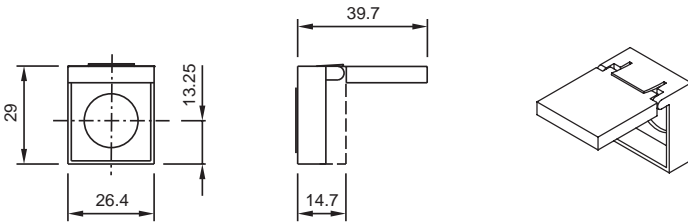
3 Indicator complete page 10



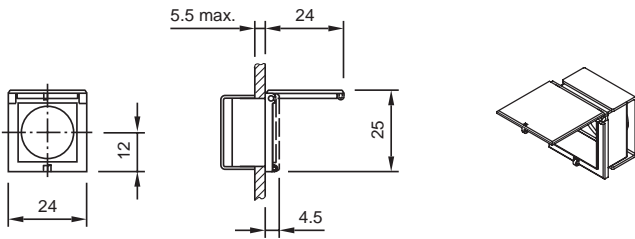
4 Indicator complete, flush mounting page 18



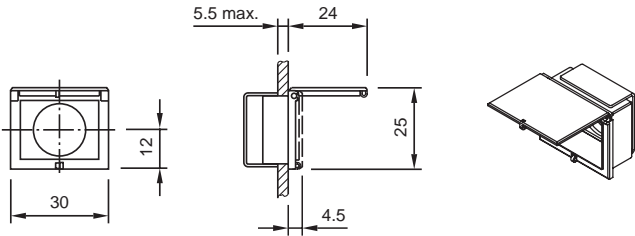
5 Protective cover, raised mounting page 31



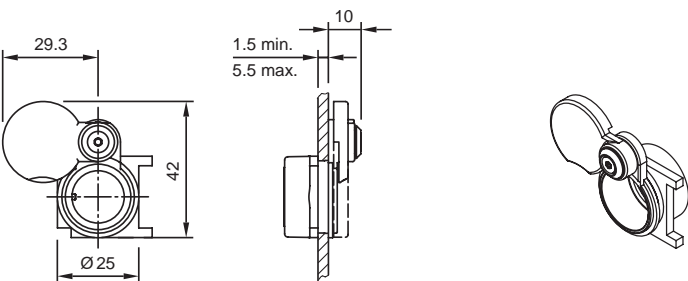
6 Protective cover, flush mounting page 31



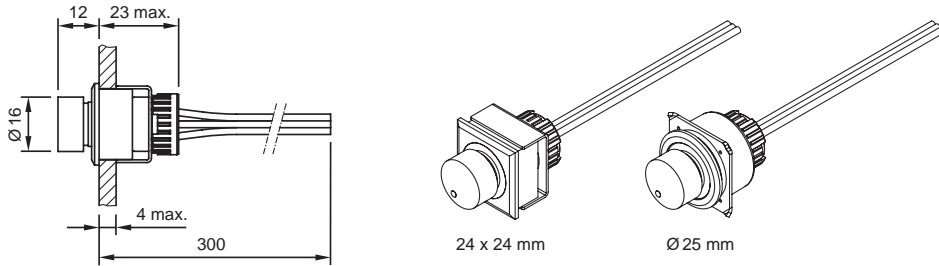
7 Protective cover, flush mounting page 31



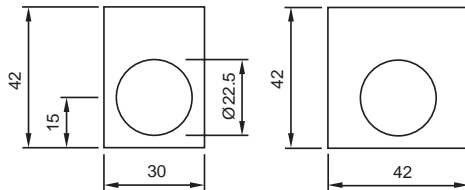
8 Protective cover, flush mounting page 31



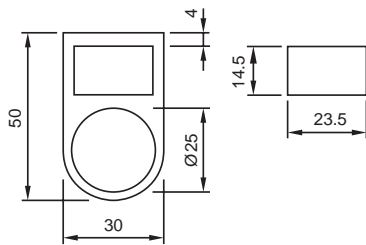
9 Potentiometer, flush mounting page 24



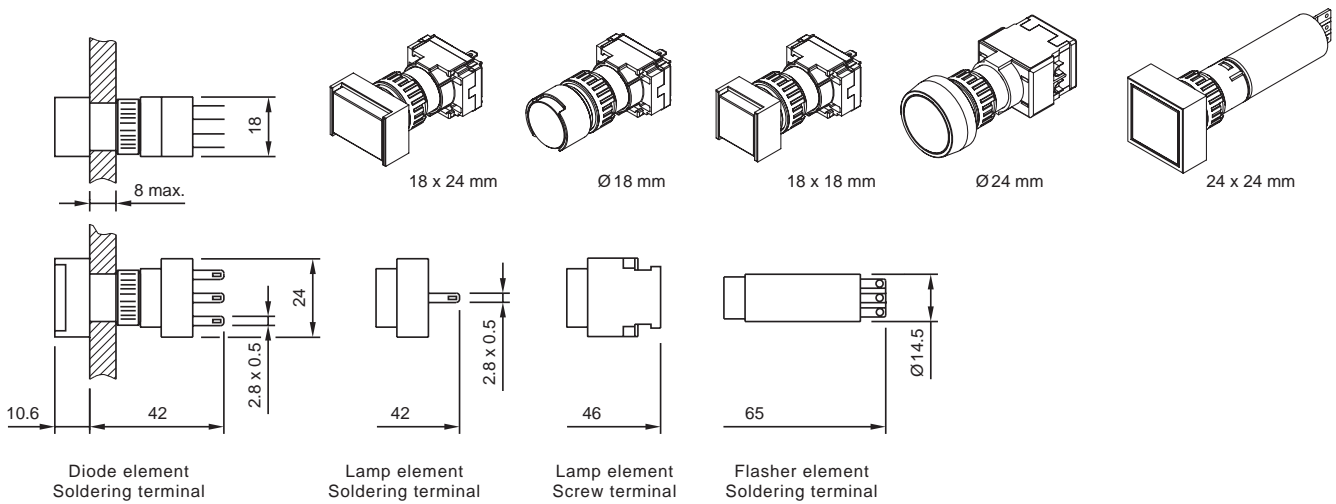
10 Legend plate page 28



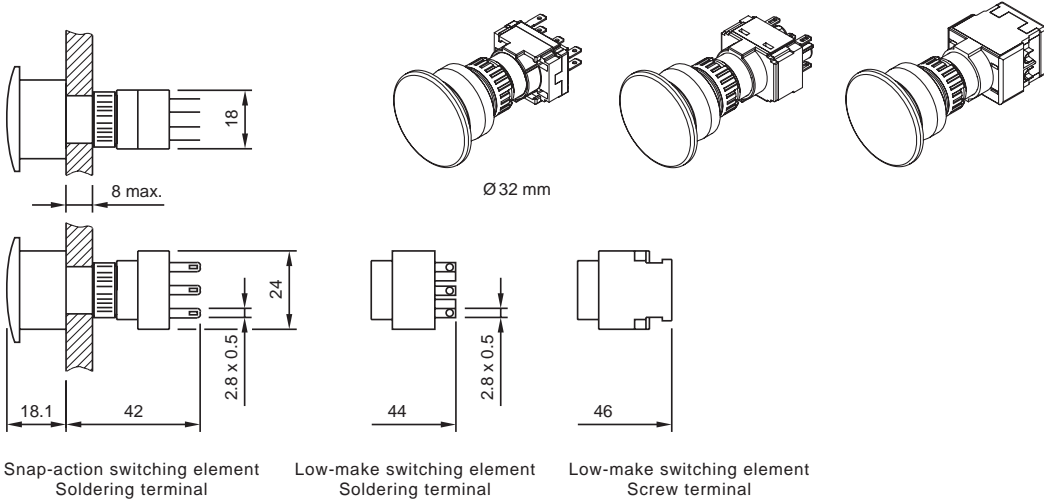
11 Legend frame page 28 | Legend plate insert page 29



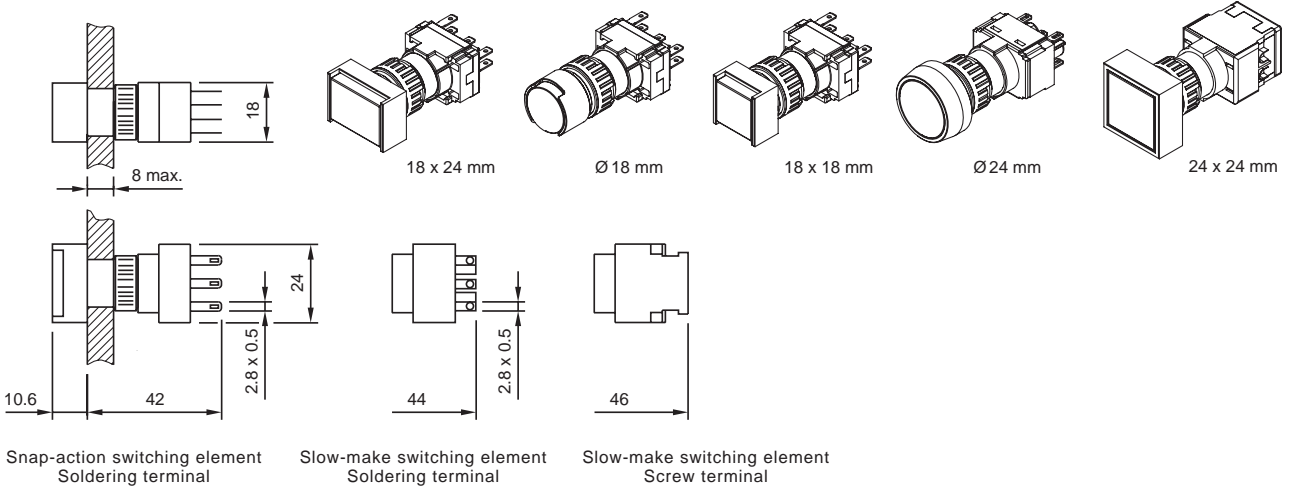
12 Indicator actuator page 10



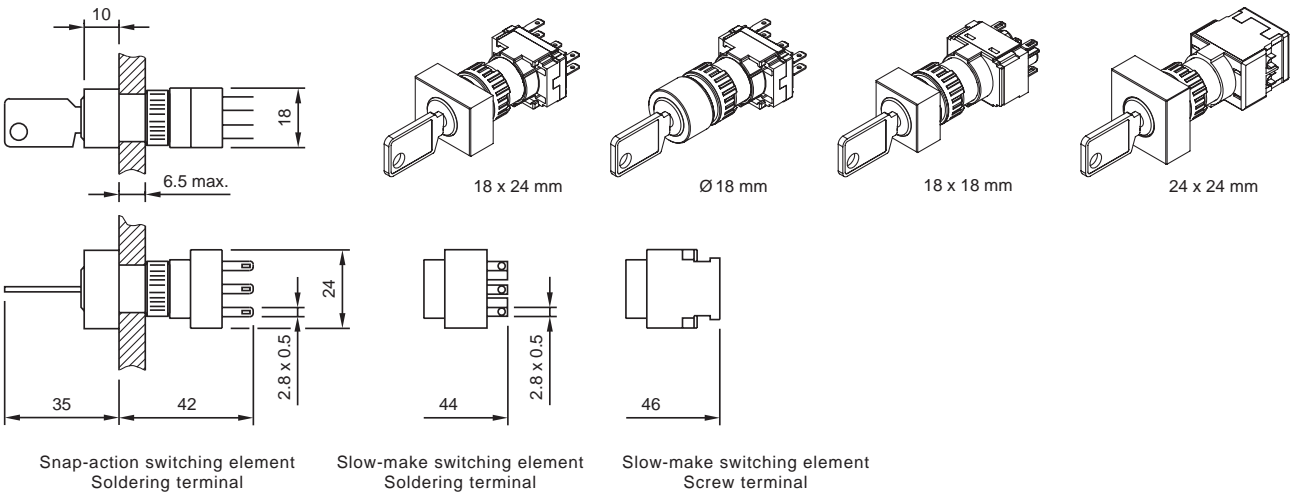
13 Mushroom-head pushbutton actuator page 13



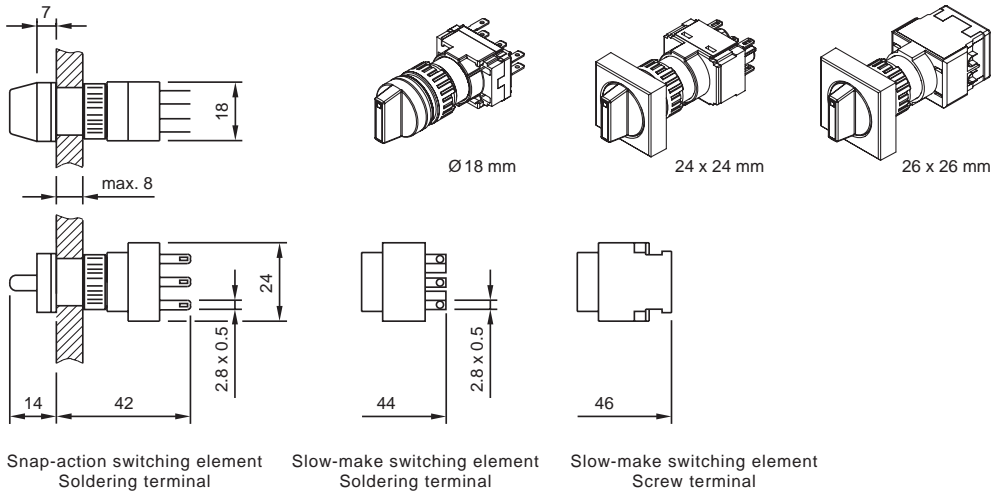
14 Illuminated pushbutton actuator page 11



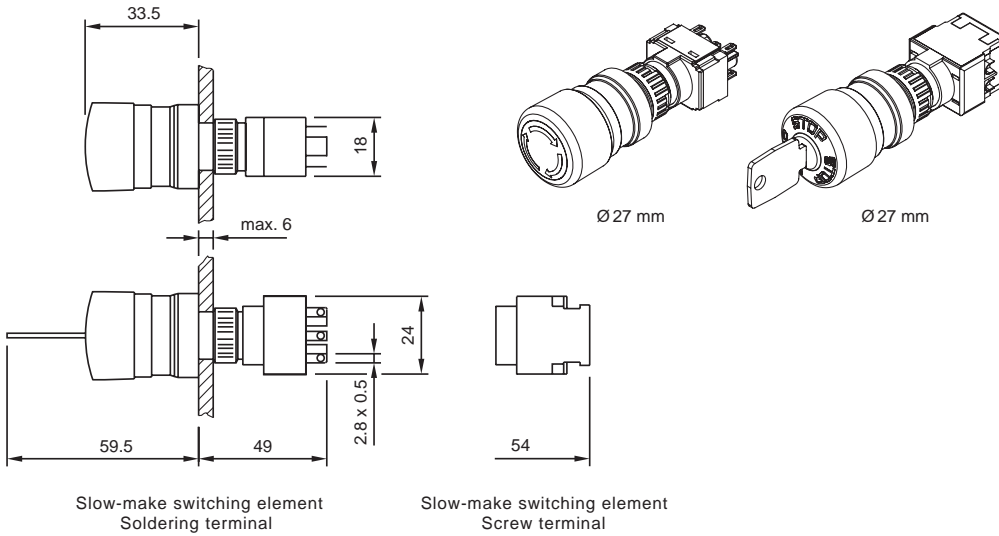
15 Keylock switch actuator 2 positions page 14 | Keylock switch actuator 3 positions page 15



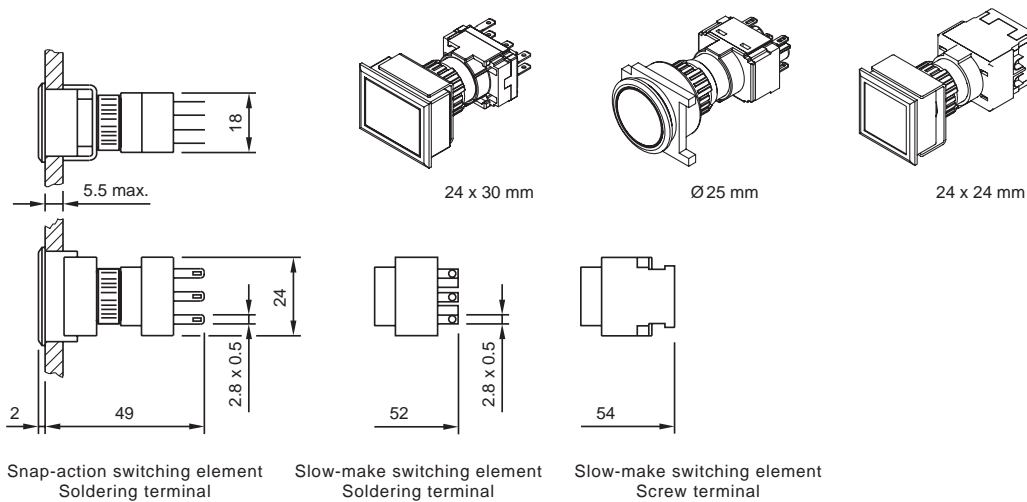
16 Selector switch actuator 2 positions page 16 | Selector switch actuator 3 positions page 17



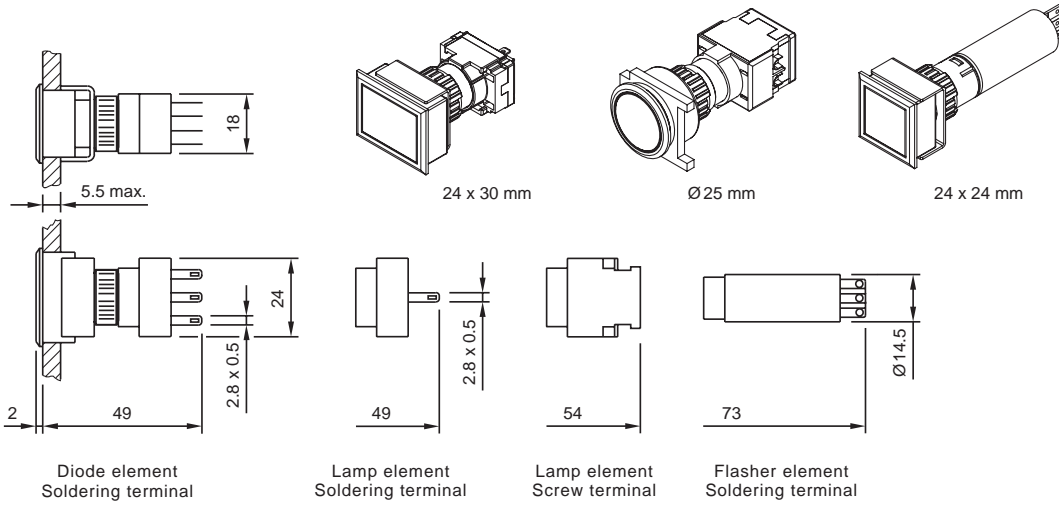
17 Emergency-stop pushbutton actuator, foolproof EN IEC 60947-5-5 page 12 | Emergency-stop pushbutton actuator, foolproof page 13



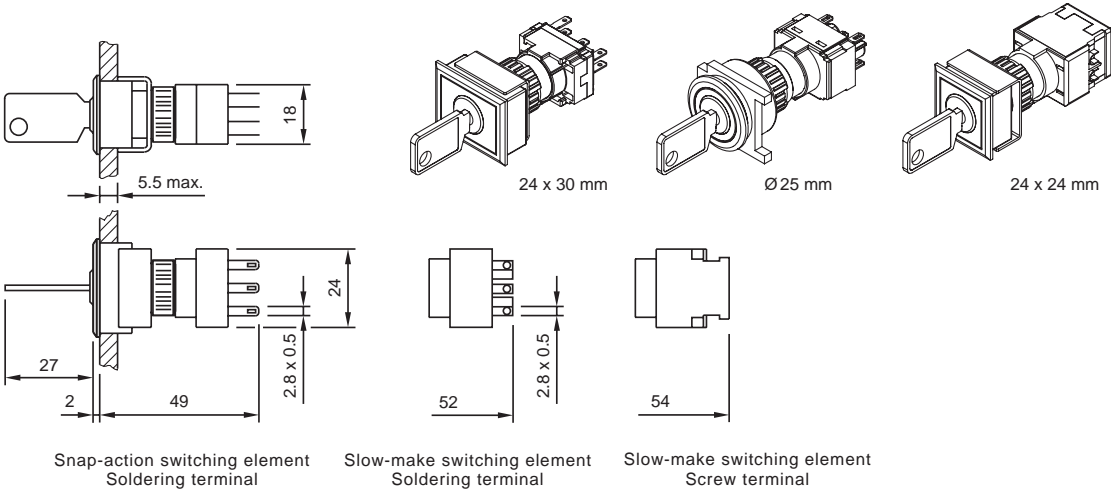
18 Illuminated pushbutton actuator, flush mounting page 19



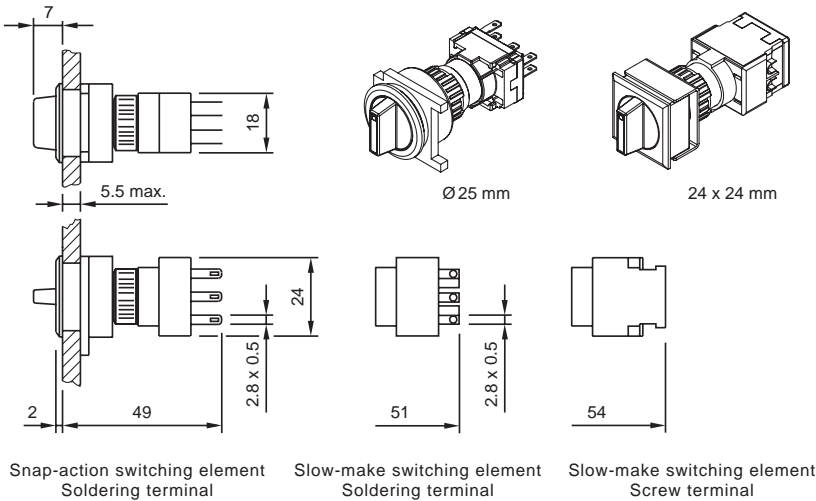
19 Indicator actuator, flush mounting page 18



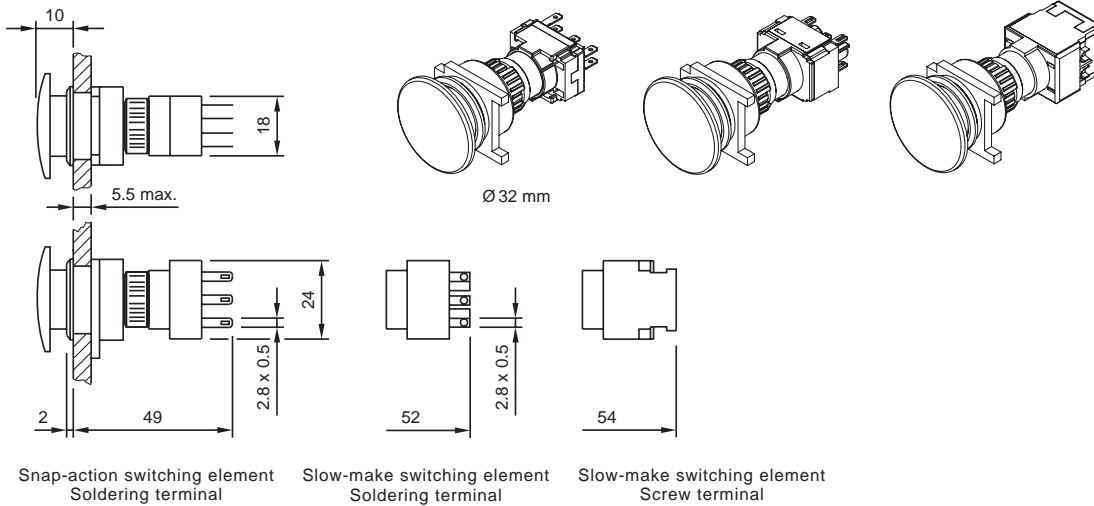
20 Keylock switch actuator 2 positions, flush mounting page 20 | Keylock switch actuator 3 positions, flush mounting page 21



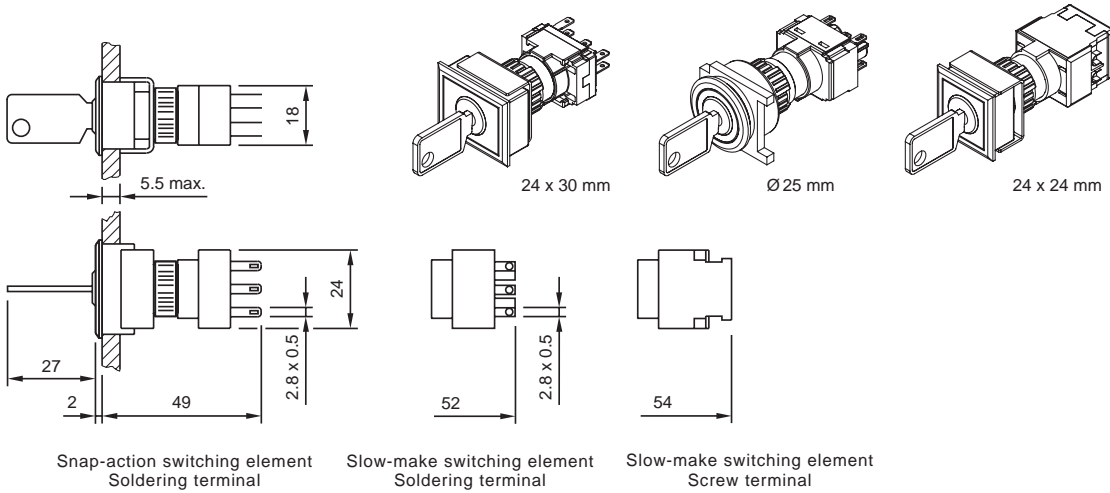
21 Selector switch actuator 2 positions, flush mounting page 22 | Selector switch actuator 3 positions, flush mounting page 23



22 Mushroom-head pushbutton actuator, flush mounting page 19

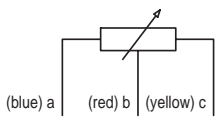


23 Keylock switch actuator 3 positions, flush mounting page 21



Circuit drawing

1 Potentiometer, flush mounting page 24



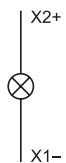
2 Illuminated pushbutton actuator, flush mounting page 19 | Mushroom-head pushbutton actuator, flush mounting page 19



3 Illuminated pushbutton actuator, flush mounting page 19 | Mushroom-head pushbutton actuator, flush mounting page 19



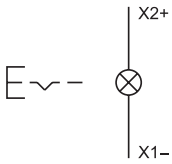
4 Indicator complete page 10 | Indicator actuator page 10 | Indicator complete, flush mounting page 18 | Indicator actuator, flush mounting page 18 | Lamp element page 32



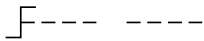
5 Emergency-stop pushbutton actuator, foolproof EN IEC 60947-5-5 page 12 | Emergency-stop pushbutton actuator, foolproof page 13



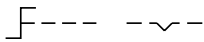
6 Illuminated pushbutton actuator page 11 | Mushroom-head pushbutton actuator page 13



7 Selector switch actuator 2 positions page 16 | Selector switch actuator 2 positions, flush mounting page 22



8 Selector switch actuator 2 positions page 16 | Selector switch actuator 2 positions, flush mounting page 22



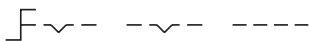
9 Selector switch actuator 3 positions page 17 | Selector switch actuator 3 positions, flush mounting page 23



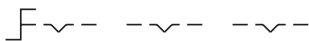
10 Selector switch actuator 3 positions page 17 | Selector switch actuator 3 positions, flush mounting page 23



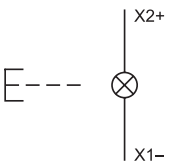
11 Selector switch actuator 3 positions page 17 | Selector switch actuator 3 positions, flush mounting page 23



12 Selector switch actuator 3 positions page 17 | Selector switch actuator 3 positions, flush mounting page 23



13 Illuminated pushbutton actuator page 11 | Mushroom-head pushbutton actuator page 13



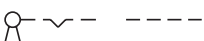
14 Keylock switch actuator 3 positions page 15 | Keylock switch actuator 3 positions, flush mounting page 21



15 Keylock switch actuator 3 positions page 15 | Keylock switch actuator 3 positions, flush mounting page 21



16 Keylock switch actuator 2 positions page 14 | Keylock switch actuator 2 positions, flush mounting page 20



17 Keylock switch actuator 2 positions page 14 | Keylock switch actuator 2 positions, flush mounting page 20



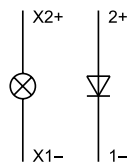
18 Keylock switch actuator 3 positions page 15 | Keylock switch actuator 3 positions, flush mounting page 21



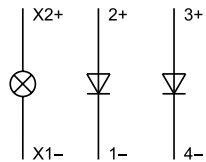
19 Keylock switch actuator 3 positions page 15 | Keylock switch actuator 3 positions, flush mounting page 21



20 Diode element page 33



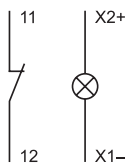
21 Diode element page 33



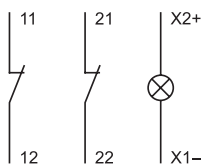
22 Switching element for Pushbutton | Keylock- and Selector switch 2 positions page 34



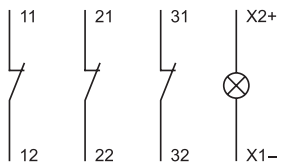
23 Switching element for Pushbutton | Keylock- and Selector switch 2 positions page 34



24 Switching element for Pushbutton | Keylock- and Selector switch 2 positions page 34 | **Switching element for Keylock- and Selector switch 3 positions** page 35



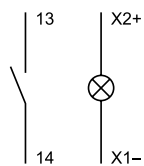
25 Switching element for Pushbutton | Keylock- and Selector switch 2 positions page 34



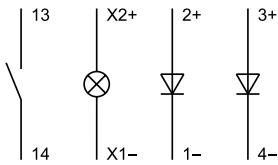
26 Switching element for Pushbutton | Keylock- and Selector switch 2 positions page 34



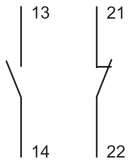
27 Switching element for Pushbutton | Keylock- and Selector switch 2 positions page 34



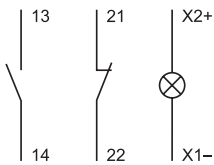
28 Switching element for Pushbutton | Keylock- and Selector switch 2 positions page 34



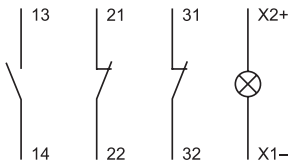
29 Switching element for Pushbutton | Keylock- and Selector switch 2 positions page 34



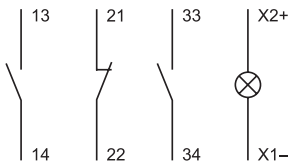
30 Switching element for Pushbutton | Keylock- and Selector switch 2 positions page 34 | Switching element for Keylock- and Selector switch 3 positions page 35



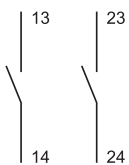
31 Switching element for Pushbutton | Keylock- and Selector switch 2 positions page 34



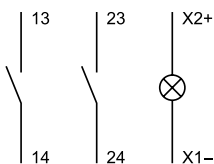
32 Switching element for Pushbutton | Keylock- and Selector switch 2 positions page 34



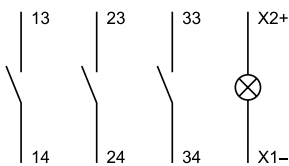
33 Switching element for Pushbutton | Keylock- and Selector switch 2 positions page 34 | Switching element for Keylock- and Selector switch 3 positions page 35



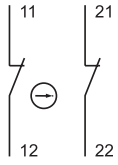
34 Switching element for Pushbutton | Keylock- and Selector switch 2 positions page 34 | Switching element for Keylock- and Selector switch 3 positions page 35



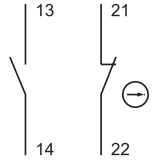
35 Switching element for Pushbutton | Keylock- and Selector switch 2 positions page 34



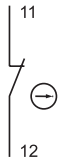
36 Switching element for Pushbutton | Keylock- and Selector switch 2 positions page 34 | **Switching element for Keylock- and Selector switch 3 positions** page 35 | **Switching element for Emergency-stop pushbutton** page 35



37 Switching element for Keylock- and Selector switch 3 positions page 35 | **Switching element for Emergency-stop pushbutton** page 35



38 Switching element for Emergency-stop pushbutton page 35



Index from Typ-Nr.

Typ-Nr.	Page	Typ-Nr.	Page	Typ-Nr.	Page
01-907	40	52-928.60	27	61-2605.0/D	15
02-905	39	52-928.9	27	61-2605.0/D	21
02-912.1	38	52-929.20	27	61-2606.0/D	15
02-912.2	38	52-929.30	27	61-2606.0/D	21
02-912.3	38	52-929.40	27	61-2607.0/D	15
02-912.4	38	52-929.50	27	61-2607.0/D	21
10-1306.1349	37	52-929.60	27	61-2701.0/D	15
10-1307.1369	37	52-929.8	27	61-2701.0/D	21
10-1309.1309	37	52-929.9	27	61-2703.0/D	15
10-1310.1319	37	52-950.0	29	61-2703.0/D	21
10-1311.1249	37	52-952.0	29	61-2705.0/D	15
10-1312.1229	37	61-0000.02	18	61-2705.0/D	21
10-1313.1209	37	61-0009.0	18	61-2801.0/D	15
10-1313.1249	37	61-0010.02	10	61-2801.0/D	21
10-1316.1179	37	61-0019.0	10	61-2802.0/D	15
10-1316.1209	37	61-0020.02	10	61-2802.0/D	21
10-1319.1179	37	61-0029.0	10	61-2804.0/D	15
10-1319.1199	37	61-0030.02	10	61-2804.0/D	21
10-2J06.3142	37	61-0039.0	10	61-3440.4/1	12
10-2J06.3144	37	61-0040.02	10	61-3440.4/1S	12
10-2J06.3145	37	61-0049.0	10	61-3440.4/2	12
10-2J06.3146	37	61-0050.02	10	61-3440.4/5	12
10-2J06.3149	37	61-0059.0	10	61-3440.4/8	13
10-2J09.1062	37	61-1100.0	19	61-3440.4/D	12
10-2J09.1064	37	61-1100.0	19	61-4110.0	16
10-2J09.1065	37	61-1110.0	11	61-4110.0	22
10-2J09.1066	37	61-1120.0	11	61-4210.0	16
10-2J09.1069	37	61-1130.0	11	61-4210.0	22
10-2J12.1062	37	61-1140.0	11	61-4510.0	17
10-2J12.1064	37	61-1140.0	13	61-4510.0	23
10-2J12.1065	37	61-1150.0	11	61-4610.0	17
10-2J12.1066	37	61-1200.0	19	61-4610.0	23
10-2J12.1069	37	61-1200.0	19	61-4710.0	17
10-2J13.1062	37	61-1210.0	11	61-4710.0	23
10-2J13.1064	37	61-1220.0	11	61-4810.0	17
10-2J13.1065	37	61-1230.0	11	61-4810.0	23
10-2J13.1066	37	61-1240.0	11	61-4970.10	24
10-2J13.1069	37	61-1240.0	13	61-4970.13	24
10-2J19.1042	37	61-1250.0	11	61-5441.0/K	13
10-2J19.1044	37	61-1300.0	19	61-5441.4/K	12
10-2J19.1045	37	61-1300.0	19	61-8000.05	33
10-2J19.1046	37	61-1310.0	11	61-8006.01	32
10-2J19.1049	37	61-1320.0	11	61-8006.02	32
14-987.1001	32	61-1330.0	11	61-8101.02	33
31-929	36	61-1350.0	11	61-8102.02	33
31-946	36	61-2101.0/D	14	61-8212.12	34
31-985.0	32	61-2101.0/D	20	61-8212.22	34
31-989.300	32	61-2201.0/D	14	61-8410.12	34
31-989.311	32	61-2201.0/D	20	61-8410.22	34
31-991	39	61-2203.0/D	14	61-8420.12	34
51-910	39	61-2203.0/D	20	61-8420.22	34
51-920	31	61-2205.0/D	14	61-8430.12	34
51-925	31	61-2205.0/D	20	61-8430.22	34
51-943.1	36	61-2501.0/D	15	61-8440.12	34
51-943.9	40	61-2501.0/D	21	61-8440.22	34
51-947.0	31	61-2601.0/D	15	61-8450.12	34
51-948.0	31	61-2601.0/D	21	61-8450.22	34
51-949.0	31	61-2602.0/D	15	61-8460.12	34
52-928.0	27	61-2602.0/D	21	61-8460.22	34
52-928.20	27	61-2603.0/D	15	61-8470.12	34
52-928.30	27	61-2603.0/D	21	61-8470.22	34
52-928.40	27	61-2604.0/D	15	61-8480.12	34
52-928.50	27	61-2604.0/D	21	61-8480.22	34

Index from Typ-Nr.

Typ-Nr.	Page	Typ-Nr.	Page	Typ-Nr.	Page
61-8490.12	34	61-9221.0	25	61-9480.6	40
61-8490.22	34	61-9221.8	25	61-9481.6	38
61-8520.12	35	61-9221.9	25	61-9481.6	40
61-8520.22	35	61-9226.0	25	61-9593.0	26
61-8550.12	35	61-9226.8	25	61-9593.2	26
61-8550.22	35	61-9226.9	25	61-9593.4	26
61-8574.12	35	61-9230.0	27	61-9593.5	26
61-8574.22	35	61-9230.0	27	61-9600.0	30
61-8610.11	34	61-9231.0	25	61-9600.1	30
61-8610.17	34	61-9231.8	25	61-9642.1	25
61-8610.37	34	61-9231.9	25	61-9642.1	25
61-8615.11	34	61-9236.0	25	61-9642.2	25
61-8620.17	34	61-9236.8	25	61-9642.2	25
61-8620.37	34	61-9236.9	25	61-9642.3	25
61-8625.11	34	61-9250.0	27	61-9642.3	25
61-8640.11	34	61-9251.0	25	61-9642.4	25
61-8640.17	34	61-9251.8	25	61-9642.4	25
61-8640.37	34	61-9251.9	25	61-9642.5	25
61-8645.11	34	61-9311.1	25	61-9642.5	25
61-8650.17	34	61-9311.2	25	61-9642.6	25
61-8650.37	34	61-9311.3	25	61-9642.6	25
61-8655.11	34	61-9311.4	25	61-9642.7	25
61-8670.17	34	61-9311.5	25	61-9642.7	25
61-8670.37	34	61-9311.6	25	61-9671.1	25
61-8675.11	34	61-9311.7	25	61-9671.2	25
61-8720.17	35	61-9321.1	25	61-9671.3	25
61-8720.37	35	61-9321.2	25	61-9671.4	25
61-8725.11	35	61-9321.3	25	61-9671.5	25
61-8745.11	35	61-9321.4	25	61-9671.6	25
61-8745.17	35	61-9321.5	25	61-9671.7	25
61-8745.37	35	61-9321.6	25	61-9681.1	25
61-8750.17	35	61-9321.7	25	61-9681.2	25
61-8755.11	35	61-9326.2	25	61-9681.3	25
61-8755.11	35	61-9326.3	25	61-9681.4	25
61-8755.17	35	61-9326.4	25	61-9681.5	25
61-8755.37	35	61-9326.5	25	61-9681.6	25
61-8770.17	35	61-9326.6	25	61-9681.7	25
61-8770.37	35	61-9326.7	25	61-9707.7	25
61-8775.11	35	61-9331.1	25	61-9711.0	40
61-8775.11	35	61-9331.2	25	61-9730.0	39
61-8775.17	35	61-9331.3	25	61-9740.0	40
61-8775.37	35	61-9331.4	25	61-9771.0	25
61-9028.0	28	61-9331.5	25	61-9771.8	25
61-9028.20	28	61-9331.6	25	61-9771.9	25
61-9028.30	28	61-9331.7	25	61-9781.0	25
61-9028.40	28	61-9336.2	25	61-9781.8	25
61-9028.50	28	61-9336.3	25	61-9781.9	25
61-9028.60	28	61-9336.4	25	61-9820.1	36
61-9028.9	28	61-9336.5	25	61-9821.1	36
61-9029.20	28	61-9336.6	25	61-9823	36
61-9029.30	28	61-9336.7	25	61-9830	36
61-9029.40	28	61-9351.1	25	61-9830.2	36
61-9029.50	28	61-9351.2	25	61-9831.2	36
61-9029.60	28	61-9351.3	25	61-9841.0	26
61-9029.8	28	61-9351.4	25	61-9841.0	26
61-9029.9	28	61-9351.5	25	61-9841.2	26
61-9210.0	27	61-9351.6	25	61-9841.2	26
61-9210.0	27	61-9351.7	25	61-9841.4	26
61-9211.0	25	61-9450.0	31	61-9841.4	26
61-9211.8	25	61-9451.0	31	61-9841.5	26
61-9211.9	25	61-9452.0	31	61-9841.5	26
61-9220.0	27	61-9453.0	31	61-9841.6	26
61-9220.0	27	61-9480.5	38	61-9841.6	26

Index from Typ-Nr.

<u>Typ-Nr.</u>	<u>Page</u>	<u>Typ-Nr.</u>	<u>Page</u>	<u>Typ-Nr.</u>	<u>Page</u>
61-9841.8	26				
61-9841.8	26				
61-9841.8A	26				
61-9841.8A	26				
61-9912.0	39				
61-9915.0	39				
61-9920.0	31				
61-9921.0	31				
61-9922.0	31				
61-9924.0	31				
61-9927.2	30				
61-9930.0	29				
61-9930.0	30				
61-9931.0	29				
61-9931.0	30				
61-9932.0	30				
61-9932.0	30				
61-9932.1	30				
61-9932.1	30				
61-9932.10	30				
61-9932.10	30				
61-9933.0	29				
61-9933.0	29				
61-9933.1	29				
61-9933.1	29				
61-9933.10	29				
61-9933.10	29				
61-9934.8	29				
61-9936.0	30				
61-9960	39				
61-9965	38				
61-9970.0	38				
61-9970.1	38				
61-9970.2	38				
61-9970.3	38				
61-9980.0	28				
704.945.6	38				
704.945.6	40				
704.962.0	28				
704.962.5	28				
704.968.0	29				
704.968.1	29				
84-9103.7	30				
K61-999.100	39				