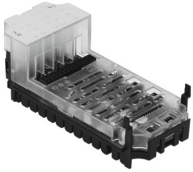


# Analogue module CPX-2AE-U-I

Part number: 526168

FESTO



 General operating condition

## Data sheet

Feature	Value
Dimensions W x L x H	(incl. interlinking block and connection system) 50 mm x 107 mm x 50 mm
Product weight	48 g
Ambient temperature	-5 °C ... 50 °C
Storage temperature	-20 °C ... 70 °C
Degree of protection	Depends on manifold block
Corrosion resistance class (CRC)	1 - Low corrosion stress (when installed)
Max. cable length	30 m Shielded
LABS (PWIS) conformity	VDMA24364-B2-L
Housing material	PA-reinforced PC
LED indicators	1 group diagnostics
Diagnostics	Wire break per channel Limit value violation per channel Short circuit, input signal Parameterization error
Parameterization	Data format Forcing per channel Limit value monitoring per channel Measured value smoothing Signal range per channel Response to short circuit Wire break monitoring per channel
Internal cycle time	4 ms
DC operating voltage range	18 V ... 30 V
Nominal operating voltage DC	24 V
Intrinsic current consumption at nominal operating voltage	Typ. 50 mA
No. of inputs	2
Data format	12 bit + sign Scalable to 15 bits
Repetition accuracy	0.15 % at 25 °C
Basic error limit at 25°C	+/- 0.3 % for voltage inputs
Operating error limit related to the ambient temperature range	+/- 0.5 % for voltage inputs
Sensor type	0 - 10 V 0 - 20 mA 4 - 20 mA
Electrical isolation between channels	no
Electrical isolation between channel and internal bus	Yes, without using the internal sensor supply

Feature	Value
Fuse protection (short circuit)	Internal electronic fuse