

Friday, 24 March 2006

HOME

line isolation transformers

HOME

0800 316 6060

Company Profile

Products

Catalogue

Distributors

Contacts

Quality

Can We Help?

Your Opinion

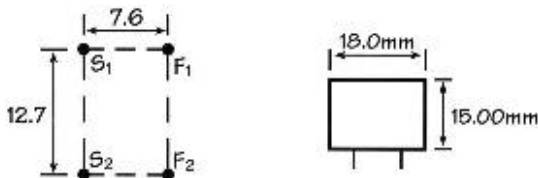
Type TFO 48



PCB mounting encapsulated 600:600 Ω line transformer offering improved performance over the OEP1200 and similar devices. A three part concentrically wound bobbin is utilised to provide improved primary to secondary coupling together with improved frequency response and return loss characteristics.

Insertion loss	<1.5dB 200Hz - 4kHz with 600 Ω Termination
Return loss	<-24dB 200Hz-4kHz with 600 Ω Termination
Linearity	<0.03% THD 300Hz - 4kHz @-10 dBm/600 Ω
Saturation	<10V RMS @ 50Hz, 65V peak.
Isolation	PRI to SEC Reinforced (Tested @ 4kV RMS for 1 minute)
dc resistance	Primary Typically 50 Ω \pm 10% , Secondary Typically 60 Ω \pm 10%
Leakage Inductance	Typically 4 mH

DIMENSIONS H = 15 W = 18 D = 18



Approved to EN60950 and
 EN41003
 BAPT Certificate of
 Recognition CR/0126



Type Z1612E



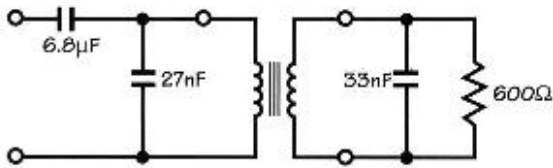
This 600:600 Ω Line Isolation/Matching Transformer is a very low distortion version of the industry standard OEP1200 device for use in V.34 applications. In common with that product this transformer is designed for use where the telephone line current is diverted from the winding by a choke or solid state device. Its use will enable users to comply with the requirements of BS6305.

Resin encapsulated in flame retardant cases. All materials are UL94-V0 rated.

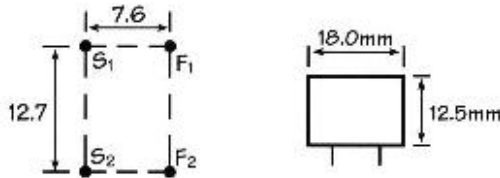
Distortion	0dB/600 Ω , f=450Hz. 2nd Harmonic -88dBm.
Insertion loss	1.5dB max @ 2kHz.
Return loss	-20dB @ 200Hz-4kHz.
Isolation longitudinal	3.5kV RMS or 5kV peak.
Saturation	10V RMS 65V peak @ 50Hz.

Balance	Better than 80dB 200Hz-4kHz.
Signal/noise ratio	33dB
dc resistance	68 Ω \pm 10% (NB. not to be tested with a dc current)

TEST CIRCUIT



DIMENSIONS H = 12.5 W = 18 D = 18



Approved to EN60950 and EN41003
BABT Certificate of Recognition CR/0126



transformer manufacturers,
 wound components, power
 supplies, low voltage lighting,
 switch mode power supplies.



OXFORD ELECTRICAL PRODUCTS LTD

Friday, 24 March 2006

- [HOME](#)
- [Company Profile](#)
- [Products](#)
- [Catalogue](#)
- [Distributors](#)
- [Contacts](#)
- [Quality](#)
- [Can We Help?](#)
- [Your Opinion](#)

Walters OEP Transformers

Telecoms, LAN, Lighting, Medical, Audio
 Security, Controls, EPOS, Instrumentation

Walters OEP Power Supplies

DC - DC Converters
 Custom Made
 Switch Mode
 Linear

Walters OEP Lighting Products

Halogen Lamps, Floodlights, PIR's etc.

[View Disclaimer](#)