

Metal One-touch Fittings

Series KQB2

Compact and lightweight

RoHS

Configuration variations

17 models

Fluid temperature

-5 to 150°C

Connection thread

M, R, Rc, UNF, NPT, G

○ All metal except seal parts

○ Material

Metal parts: Brass, Stainless steel

Seal parts: Special FKM

Variations

| | | Applicable tubing O.D. (mm) | | | | | |
|-------------------|-----------|-----------------------------|----|----|-----|-----|-----|
| | | ø4 | ø6 | ø8 | ø10 | ø12 | ø16 |
| Connection thread | M5 | ● | ● | | | | |
| | R1/8 | ● | ● | ● | ● | | |
| | G1/8 | ● | ● | ● | ● | | |
| | R1/4 | ● | ● | ● | ● | ● | |
| | G1/4 | ● | ● | ● | ● | ● | |
| | R3/8 | | ● | ● | ● | ● | ● |
| | G3/8 | | ● | ● | ● | ● | ● |
| | R1/2 | | | ● | ● | ● | ● |
| | G1/2 | | | ● | ● | ● | ● |
| | No thread | ● | ● | ● | ● | ● | ● |

| | | Applicable tubing O.D. (inch) | | | | | |
|-------------------|-----------|-------------------------------|--------|-------|--------|-------|-------|
| | | ø1/8" | ø5/32" | ø1/4" | ø5/16" | ø3/8" | ø1/2" |
| Connection thread | 10-32 UNF | ● | ● | ● | | | |
| | NPT1/8 | ● | ● | ● | ● | ● | |
| | NPT1/4 | ● | ● | ● | ● | ● | ● |
| | NPT3/8 | | | ● | ● | ● | ● |
| | NPT1/2 | | | | | ● | ● |
| | No thread | ● | ● | ● | ● | ● | ● |



Variations

Male Connector **KQB2H**



Metric
R thread ... P. 116
G thread ... P. 129
Inch ... P. 123

Bulkhead Union **KQB2E**



Metric ... P. 118
Inch ... P. 125

Different Diameter Union "Y" **KQB2U**



Metric ... P. 119
Inch ... P. 126

Hexagon Socket Head Male Connector **KQB2S**



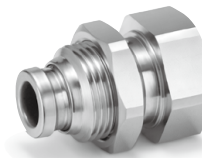
Metric
R thread ... P. 116
G thread ... P. 129
Inch ... P. 123

Union Tee **KQB2T**



Metric ... P. 118
Inch ... P. 125

Bulkhead Connector **KQB2E**



Metric
Rc thread ... P. 120
G thread ... P. 131
Inch ... P. 126

Straight Union **KQB2H**



Metric ... P. 116
Inch ... P. 123

Union "Y" **KQB2U**



Metric ... P. 118
Inch ... P. 125

Extended Male Elbow **KQB2W**



Metric
R thread ... P. 120
G thread ... P. 131
Inch ... P. 126

Male Elbow **KQB2L**



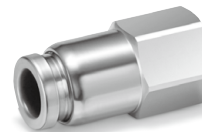
Metric
R thread ... P. 117
G thread ... P. 130
Inch ... P. 124

Different Diameter Tee **KQB2T**



Metric ... P. 119
Inch ... P. 125

Female Connector **KQB2F**



Metric
Rc thread ... P. 121
G thread ... P. 131
Inch ... P. 127

Male Branch Tee **KQB2T**



Metric
R thread ... P. 117
G thread ... P. 130
Inch ... P. 124

Plug-in Reducer **KQB2R**



Metric ... P. 119
Inch ... P. 125

Plug **KQB2P**



Metric ... P. 121
Inch ... P. 127

Union Elbow **KQB2L**



Metric ... P. 118
Inch ... P. 124

Different Diameter Straight **KQB2H**



Metric ... P. 119
Inch ... P. 126

Spatter Resistant Cylinders
for Arc Welding

Clamp Cylinders

Gas/Air Switching Valve

Detection Switches

Tubing

Fittings

Flow Control Equipment

Metal One-touch Fittings

Applicable Tubing: Metric Size, Connection Thread: M, R, Rc

Series **KQB2**

RoHS



Applicable Tubing

| | |
|-------------|---------------------------|
| Tubing O.D. | ø4, ø6, ø8, ø10, ø12, ø16 |
|-------------|---------------------------|

Specifications

| | |
|--------------------------------------------------|----------------------------------------------|
| Fluid | Air, Water |
| Operating pressure range ^{Note 1)} | -100 kPa to 1 MPa ^{Note 2)} |
| Proof pressure | 3.0 MPa |
| Ambient and fluid temperature ^{Note 3)} | -5 to 150°C (No freezing) ^{Note 2)} |
| Lubricant | Grease-free specification |
| Seal on the threads | With sealant |

Note 1) Avoid using in a vacuum holding application such as a leak tester, since there is leakage.

Note 2) Check the operating pressure range and operating temperature range of the tubing.

Note 3) It is recommended that you use the inner sleeve in the following conditions:

- When using in an environment where the fluid temperature changes drastically.
- When using at a high temperature.

* Temperature Condition of Mounting the Inner Sleeve

| Tubing | Temperature |
|----------------------|---------------|
| FEP tubing/Series TH | 80°C or more |
| PFA tubing/Series TL | 120°C or more |

Spare Parts

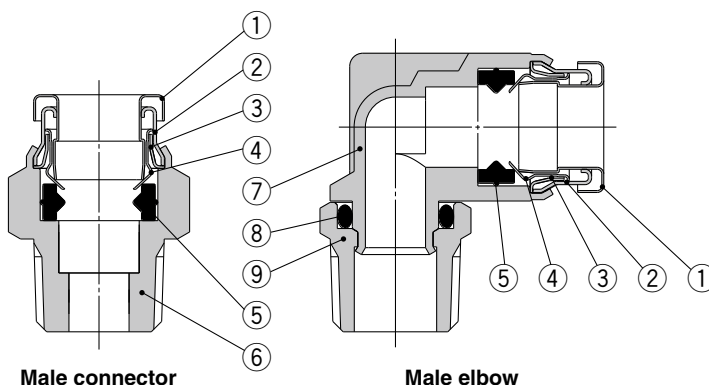
| Description | Tubing O.D. | Part no. | Material |
|--------------|-------------|-------------------|------------------------------------|
| Gasket | — | M-5G3 | Stainless steel 316, Special FKM |
| Bulkhead nut | ø4 | KQB223-P01 | C3604 (Electroless nickel plating) |
| | ø6 | KQB206-P01 | |
| | ø8 | KQB208-P01 | |
| | ø10 | KQB210-P01 | |
| | ø12 | KQB212-P01 | |
| | ø16 | KQB216-P01 | |

Cross Reference Table of the Inner Sleeve

| Tubing O.D. | Tubing material | | Applicable inner sleeve | |
|-------------|-----------------|--------------|-------------------------|--------|
| | TH/THI (FEP) | TL/TIL (PFA) | Part no. | Length |
| ø4 | TH0402 | — | TJ-0402 | 18 |
| | TH0425 | — | TJ-0425 | 18 |
| ø6 | — | TL0403 | TJ-0403 | 18 |
| | TH0604 | TL0604 | TJ-0604 | 19 |
| ø8 | — | — | TJ-0805 | 20.5 |
| | TH0806 | TL0806 | TJ-0806 | 20.5 |
| ø10 | — | — | TJ-1065 | 23 |
| | TH1075 | — | TJ-1075 | 23 |
| ø12 | TH1008 | TL1008 | TJ-1008 | 24 |
| | — | — | TJ-1008 | 24 |
| | TH1209 | — | TJ-1209 | 24 |
| | TH1210 | TL1210 | TJ-1210 | 24 |

* C2700 + Electroless nickel plating is used for the TJ series.

Construction



Component Parts

| No. | Description | Material |
|-----|---------------------|------------------------------------|
| 1 | Release button | Stainless steel 304 |
| 2 | Guide 1 | Stainless steel 304 |
| 3 | Guide 2 | Stainless steel 304 |
| 4 | Chuck | Stainless steel 304 |
| 5 | Seal | Special FKM (Fluoro coated) |
| 6 | Male connector body | C3604 (Electroless nickel plating) |
| 7 | Male elbow body | Stainless steel 316 |
| 8 | O-ring | Special FKM (Fluoro coated) |
| 9 | Stud | C3604 (Electroless nickel plating) |

Metal One-touch Fittings **Series KQB2**

Applicable Tubing: Metric Size, Connection Thread: M, R, Rc

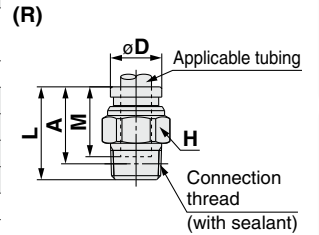
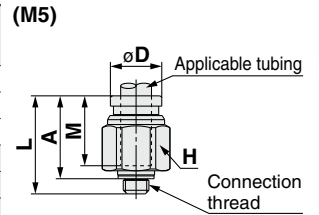
Dimensions

Male Connector: KQB2H



| Applicable tubing O.D. (mm) | Connection thread R, M | Model | H (Width across flat) | Note 1) ϕD | L | A* | M | Note 2) Effective area (mm ²) | Weight (g) |
|-----------------------------|------------------------|-------------|-----------------------|------------------|------|------|------|-------------------------------------------|------------|
| $\phi 4$ | M5 x 0.8 | KQB2H04-M5 | 10 | 8.7 | 17.1 | 14.1 | 12.6 | 4 | 5.3 |
| | 1/8 | KQB2H04-01S | | | 15.3 | 12.2 | | 5.6 | 5.6 |
| | 1/4 | KQB2H04-02S | | | 20.9 | 16.2 | | 17.2 | 17.2 |
| $\phi 6$ | M5 x 0.8 | KQB2H06-M5 | 12 | 11.1 | 19.1 | 16.1 | 13.6 | 4 | 8 |
| | 1/8 | KQB2H06-01S | | | 18.1 | 15 | | 7.3 | 7.3 |
| | 1/4 | KQB2H06-02S | | | 20.8 | 16.1 | | 15.2 | 15.2 |
| | 3/8 | KQB2H06-03S | | | 23 | 17.9 | | 28.8 | 28.8 |
| $\phi 8$ | 1/8 | KQB2H08-01S | 14 | 13.4 | 24.5 | 21.4 | 16.1 | 26.1 | 13.5 |
| | 1/4 | KQB2H08-02S | | | 22.3 | 17.6 | | 26 | 26 |
| | 3/8 | KQB2H08-03S | | | 23.7 | 18.6 | | 26.1 | 26.1 |
| $\phi 10$ | 1/8 | KQB2H10-01S | 17 | 16.4 | 25.5 | 22.4 | 17 | 26.1 | 19.8 |
| | 1/4 | KQB2H10-02S | | | 27.9 | 23.2 | | 22.7 | 22.7 |
| | 3/8 | KQB2H10-03S | | | 23 | 17.9 | | 21.6 | 21.6 |
| | 1/2 | KQB2H10-04S | | | 28.6 | 22.2 | | 53.9 | 53.9 |
| $\phi 12$ | 1/4 | KQB2H12-02S | 19 | 18.5 | 30.5 | 25.8 | 18.6 | 58.3 | 28.8 |
| | 3/8 | KQB2H12-03S | | | 24.7 | 19.6 | | 21.5 | 21.5 |
| | 1/2 | KQB2H12-04S | | | 28.7 | 22.3 | | 47 | 47 |
| $\phi 16$ | 3/8 | KQB2H16-03S | 24 | 24.6 | 33.6 | 28.5 | 20.8 | 81 | 48.3 |
| | 1/2 | KQB2H16-04S | | | 29.5 | 23.1 | | 113 | 113 |

* Reference dimensions after installation of R thread
 Note 1) ϕD is maximum diameter.
 Note 2) Value of FEP tubing.
 Value of nylon tubing for $\phi 16$ only.

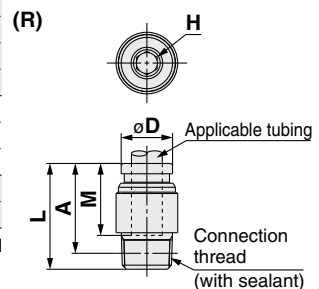
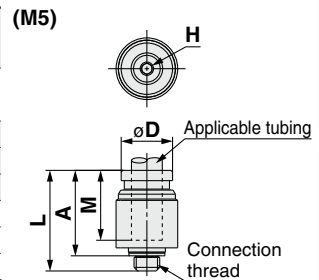


Hexagon Socket Head Male Connector: KQB2S



| Applicable tubing O.D. (mm) | Connection thread R, M | Model | H (Width across flat) | Note 1) ϕD | L | A* | M | Note 2) Effective area (mm ²) | Weight (g) |
|-----------------------------|------------------------|-------------|-----------------------|------------------|------|------|------|-------------------------------------------|------------|
| $\phi 4$ | M5 x 0.8 | KQB2S04-M5 | 2 | 9 | 17.1 | 14.1 | 12.6 | 4 | 3.9 |
| | 1/8 | KQB2S04-01S | 3 | 10 | 20.4 | 17.3 | | 4.1 | 7.9 |
| $\phi 6$ | M5 x 0.8 | KQB2S06-M5 | 2 | 12 | 19.6 | 16.6 | 13.6 | 4 | 7.8 |
| | 1/8 | KQB2S06-01S | 4 | | 20.6 | 17.5 | | 10 | 9.1 |
| | 1/4 | KQB2S06-02S | 14 | | 15.9 | 10.7 | | 14.7 | |
| $\phi 8$ | 1/8 | KQB2S08-01S | 5 | 14 | 24.7 | 21.6 | 16.1 | 17.2 | 13 |
| | 1/4 | KQB2S08-02S | 6 | | 22.9 | 18.2 | | 23.3 | 13.5 |
| | 3/8 | KQB2S08-03S | 17 | | 23.1 | 18 | | 24 | 24 |
| $\phi 10$ | 1/8 | KQB2S10-01S | 5 | 17 | 25.6 | 22.5 | 17 | 17.2 | 18.6 |
| | 1/4 | KQB2S10-02S | 8 | | 27.5 | 22.8 | | 20 | 20 |
| | 3/8 | KQB2S10-03S | 22 | | 24 | 18.9 | | 39 | 22 |
| | 1/2 | KQB2S10-04S | 22 | | 17.6 | 39.2 | | 39.2 | |
| $\phi 12$ | 1/4 | KQB2S12-02S | 8 | 19 | 30.6 | 25.9 | 18.6 | 46 | 26 |
| | 3/8 | KQB2S12-03S | 10 | | 24.9 | 19.8 | | 60 | 20.2 |
| | 1/2 | KQB2S12-04S | 22 | | 18.5 | 35.3 | | 35.3 | |
| $\phi 16$ | 3/8 | KQB2S16-03S | 10 | 24.6 | 33.2 | 28.1 | 20.8 | 81 | 43.6 |
| | 1/2 | KQB2S16-04S | 12 | | 29.4 | 23 | | 113 | 40.3 |

* Reference dimensions after installation of R thread
 Note 1) ϕD is maximum diameter.
 Note 2) Value of FEP tubing.
 Value of nylon tubing for $\phi 16$ only.

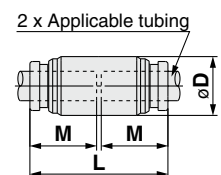


Straight Union: KQB2H



| Applicable tubing O.D. (mm) | Model | ϕD Note 1) | L | M | Note 2) Effective area (mm ²) | Weight (g) |
|-----------------------------|------------|------------------|------|------|-------------------------------------------|------------|
| $\phi 4$ | KQB2H04-00 | 9 | 26.2 | 12.6 | 5.6 | 6.8 |
| $\phi 6$ | KQB2H06-00 | 12 | 28.2 | 13.6 | 13.1 | 12 |
| $\phi 8$ | KQB2H08-00 | 14 | 33.2 | 16.1 | 26.1 | 17.4 |
| $\phi 10$ | KQB2H10-00 | 17 | 35 | 17 | 41.5 | 27.2 |
| $\phi 12$ | KQB2H12-00 | 19 | 38.2 | 18.6 | 58.3 | 33.7 |
| $\phi 16$ | KQB2H16-00 | 24.6 | 42.6 | 20.8 | 113 | 56.1 |

Note 1) ϕD is maximum diameter.
 Note 2) Value of FEP tubing.
 Value of nylon tubing for $\phi 16$ only.



Spatter Resistant Cylinders for Arc Welding

Clamp Cylinders

Gas/Air Switching Valve

Detection Switches

Tubing

Fittings

Flow Control Equipment

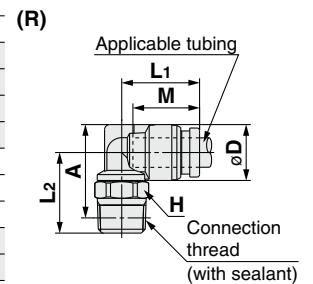
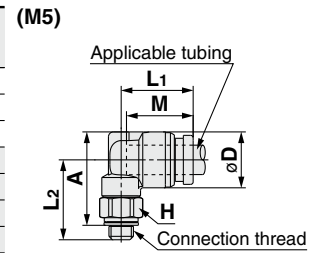
Series KQB2

Applicable Tubing: Metric Size, Connection Thread: M, R, Rc

Dimensions

Male Elbow: KQB2L

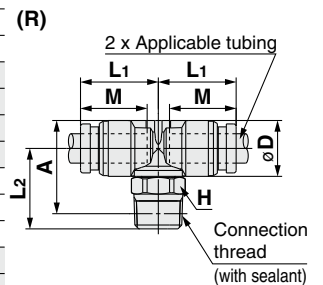
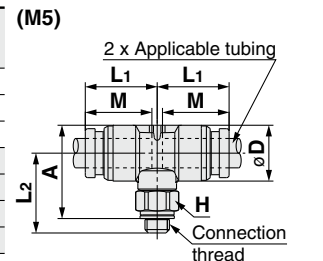
| Applicable tubing O.D. (mm) | Connection thread R, M | Model | H (Width across flat) | Note 1) ϕD | L1 | L2 | A* | M | Note 2) Effective area (mm ²) | Weight (g) |
|-----------------------------|------------------------|-------------|-----------------------|------------------|------|------|------|------|-------------------------------------------|------------|
| $\phi 4$ | M5 x 0.8 | KQB2L04-M5 | 8 | 9.1 | 13.7 | 15.2 | 16.8 | 12.6 | 3.5 | 7 |
| | 1/8 | KQB2L04-01S | 10 | | 14.4 | 15.3 | 16.7 | | 4.2 | 8.6 |
| | 1/4 | KQB2L04-02S | 14 | | 19.1 | 18.9 | 17.5 | | | |
| $\phi 6$ | M5 x 0.8 | KQB2L06-M5 | 8 | 11.4 | 14.7 | 16.3 | 19 | 13.6 | 3.5 | 9 |
| | 1/8 | KQB2L06-01S | 10 | | 15.9 | 16.4 | 21.2 | | 11.4 | 10.2 |
| | 1/4 | KQB2L06-02S | 14 | | | 20.2 | 21.2 | | 19.1 | |
| | 3/8 | KQB2L06-03S | 17 | | | 21.6 | 22.2 | | 31.2 | |
| $\phi 8$ | 1/8 | KQB2L08-01S | 12 | 13.7 | 18.6 | 18.3 | 22 | 16.1 | 21.6 | 14.8 |
| | 1/4 | KQB2L08-02S | 14 | | 19.1 | 21.5 | 23.6 | | 20.8 | |
| | 3/8 | KQB2L08-03S | 17 | | | 22.9 | 24.6 | | 32.8 | |
| $\phi 10$ | 1/8 | KQB2L10-01S | 12 | 16.6 | 20 | 19.7 | 24.9 | 17 | 21.6 | 20.4 |
| | 1/4 | KQB2L10-02S | 14 | | 21 | 22.9 | 26.5 | | 23.7 | |
| | 3/8 | KQB2L10-03S | 17 | | | 24.3 | 27.5 | | 34.5 | |
| | 1/2 | KQB2L10-04S | 22 | | | 28.5 | 30.4 | | 62.6 | |
| $\phi 12$ | 1/4 | KQB2L12-02S | 14 | 18.7 | 22.6 | 24 | 28.6 | 18.6 | 50.2 | 27.4 |
| | 3/8 | KQB2L12-03S | 17 | | 23.6 | 25.3 | 29.5 | | 34.3 | |
| | 1/2 | KQB2L12-04S | 22 | | | 29.5 | 32.4 | | 60.8 | |
| $\phi 16$ | 3/8 | KQB2L16-03S | 19 | 24.6 | 26.3 | 28 | 34.5 | 20.8 | 71 | 47 |
| | 1/2 | KQB2L16-04S | 22 | | 27.3 | 31.8 | 37 | | 100 | 62.6 |



* Reference dimensions after installation of R thread
 Note 1) ϕD is maximum diameter.
 Note 2) Value of FEP tubing.
 Value of nylon tubing for $\phi 16$ only.

Male Branch Tee: KQB2T

| Applicable tubing O.D. (mm) | Connection thread R, M | Model | H (Width across flat) | Note 1) ϕD | L1 | L2 | A* | M | Note 2) Effective area (mm ²) | Weight (g) |
|-----------------------------|------------------------|-------------|-----------------------|------------------|------|------|------|------|-------------------------------------------|------------|
| $\phi 4$ | M5 x 0.8 | KQB2T04-M5 | 8 | 9.1 | 13.7 | 15.2 | 16.8 | 12.6 | 4.5 | 9.1 |
| | 1/8 | KQB2T04-01S | 10 | | 14.4 | 15.3 | 16.7 | | 6 | 10.6 |
| | 1/4 | KQB2T04-02S | 14 | | 19.1 | 18.9 | 19.4 | | | |
| $\phi 6$ | M5 x 0.8 | KQB2T06-M5 | 8 | 11.4 | 14.7 | 16.3 | 19 | 13.6 | 4.5 | 12.1 |
| | 1/8 | KQB2T06-01S | 10 | | 15.9 | 16.4 | 21.2 | | 13.9 | 13.6 |
| | 1/4 | KQB2T06-02S | 14 | | | 20.2 | 21.2 | | 22.5 | |
| | 3/8 | KQB2T06-03S | 17 | | | 21.6 | 22.2 | | 35 | |
| $\phi 8$ | 1/8 | KQB2T08-01S | 12 | 13.7 | 18.6 | 18.3 | 22 | 16.1 | 26.3 | 20 |
| | 1/4 | KQB2T08-02S | 14 | | 19.1 | 21.5 | 23.6 | | 26.1 | |
| | 3/8 | KQB2T08-03S | 17 | | | 22.9 | 24.6 | | 38 | |
| $\phi 10$ | 1/8 | KQB2T10-01S | 12 | 16.6 | 20 | 19.7 | 24.9 | 17 | 40.8 | 28.6 |
| | 1/4 | KQB2T10-02S | 14 | | 21 | 22.9 | 26.5 | | 31.5 | |
| | 3/8 | KQB2T10-03S | 17 | | | 24.3 | 27.5 | | 42.4 | |
| | 1/2 | KQB2T10-04S | 22 | | | 28.5 | 30.4 | | 70.4 | |
| $\phi 12$ | 1/4 | KQB2T12-02S | 14 | 18.7 | 22.6 | 24 | 28.6 | 18.6 | 57.2 | 38.1 |
| | 3/8 | KQB2T12-03S | 17 | | 23.6 | 25.3 | 29.5 | | 39.7 | |
| | 1/2 | KQB2T12-04S | 22 | | | 29.5 | 32.4 | | 70.8 | |
| $\phi 16$ | 3/8 | KQB2T16-03S | 19 | 24.6 | 26.3 | 28 | 34.5 | 20.8 | 71 | 64.4 |
| | 1/2 | KQB2T16-04S | 22 | | 27.3 | 31.8 | 37 | | 100 | 79 |



* Reference dimensions after installation of R thread
 Note 1) ϕD is maximum diameter.
 Note 2) Value of FEP tubing.
 Value of nylon tubing for $\phi 16$ only.

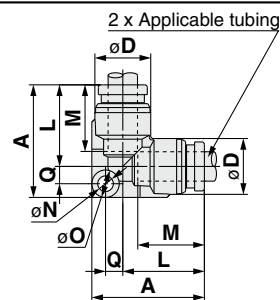
Dimensions

Union Elbow: KQB2L



| Applicable tubing O.D. (mm) | Model | Note 1) ϕD | L | A | Q | M | ϕN | ϕO | Note 2) Effective area (mm ²) | Weight (g) |
|-----------------------------|------------|------------------|------|------|-----|------|----------|----------|-------------------------------------------|------------|
| $\phi 4$ | KQB2L04-00 | 9.1 | 14.6 | 20.5 | 3.1 | 12.6 | 3.2 | 5.6 | 4.2 | 7.4 |
| $\phi 6$ | KQB2L06-00 | 11.4 | 16.6 | 23 | 3.6 | 13.6 | 3.2 | 5.6 | 11.4 | 11 |
| $\phi 8$ | KQB2L08-00 | 13.7 | 20.1 | 29.1 | 5 | 16.1 | 4.2 | 8 | 21.6 | 20.2 |
| $\phi 10$ | KQB2L10-00 | 16.6 | 22 | 31.7 | 5.7 | 17 | 4.2 | 8 | 35.2 | 29.6 |
| $\phi 12$ | KQB2L12-00 | 18.7 | 24.6 | 35 | 6.4 | 18.6 | 4.2 | 8 | 50.2 | 37.1 |
| $\phi 16$ | KQB2L16-00 | 24.6 | 28.8 | 40.5 | 7.7 | 20.8 | 4.2 | 8 | 100 | 59.7 |

Note 1) ϕD is maximum diameter.
 Note 2) Value of FEP tubing.
 Value of nylon tubing for $\phi 16$ only.

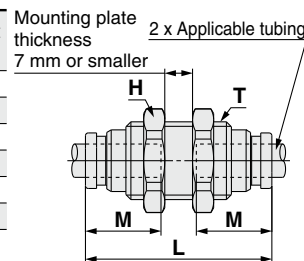


Bulkhead Union: KQB2E



| Applicable tubing O.D. (mm) | Model | T (M) | H (Width across flat) | L | Mounting hole | M | Note 2) Effective area (mm ²) | Weight (g) |
|-----------------------------|------------|---------|-----------------------|------|---------------|------|-------------------------------------------|------------|
| $\phi 4$ | KQB2E04-00 | M10 x 1 | 12 | 32.4 | 11 | 12.6 | 5.6 | 14.7 |
| $\phi 6$ | KQB2E06-00 | M14 x 1 | 17 | 35.4 | 15 | 13.6 | 13.1 | 29.2 |
| $\phi 8$ | KQB2E08-00 | M15 x 1 | 19 | 38.8 | 16 | 16.1 | 26.1 | 34.9 |
| $\phi 10$ | KQB2E10-00 | M18 x 1 | 21 | 40 | 19 | 17 | 41.5 | 47.1 |
| $\phi 12$ | KQB2E12-00 | M20 x 1 | 24 | 42.4 | 21 | 18.6 | 58.3 | 58.7 |
| $\phi 16$ | KQB2E16-00 | M27 x 1 | 30 | 46.8 | 28 | 20.8 | 113 | 107.2 |

Note) Value of FEP tubing.
 Value of nylon tubing for $\phi 16$ only.

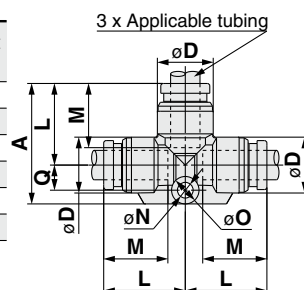


Union Tee: KQB2T



| Applicable tubing O.D. (mm) | Model | Note 1) ϕD | L | A | Q | M | ϕN | ϕO | Note 2) Effective area (mm ²) | Weight (g) |
|-----------------------------|------------|------------------|------|------|------|------|----------|----------|-------------------------------------------|------------|
| $\phi 4$ | KQB2T04-00 | 9.1 | 14.6 | 21.8 | 4.4 | 12.6 | 3.2 | 5.6 | 6.4 | 9.5 |
| $\phi 6$ | KQB2T06-00 | 11.4 | 16.6 | 24.6 | 5.2 | 13.6 | 3.2 | 5.6 | 13.4 | 14.2 |
| $\phi 8$ | KQB2T08-00 | 13.7 | 20.1 | 31.1 | 7 | 16.1 | 4.2 | 8 | 25.6 | 24.4 |
| $\phi 10$ | KQB2T10-00 | 16.6 | 22 | 34 | 8 | 17 | 4.2 | 8 | 40 | 36.8 |
| $\phi 12$ | KQB2T12-00 | 18.7 | 24.6 | 37.7 | 9.1 | 18.6 | 4.2 | 8 | 57.4 | 47 |
| $\phi 16$ | KQB2T16-00 | 24.6 | 28.8 | 43.4 | 10.6 | 20.8 | 4.2 | 8 | 100 | 75.5 |

Note 1) ϕD is maximum diameter.
 Note 2) Value of FEP tubing.
 Value of nylon tubing for $\phi 16$ only.

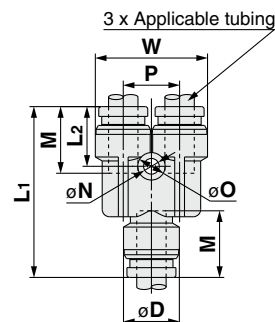


Union "Y": KQB2U



| Applicable tubing O.D. (mm) | Model | Note 1) ϕD | W | L1 | L2 | P | M | ϕN | ϕO | Note 2) Effective area (mm ²) | Weight (g) |
|-----------------------------|------------|------------------|------|------|------|------|------|----------|----------|-------------------------------------------|------------|
| $\phi 4$ | KQB2U04-00 | 9.1 | 18.2 | 30.4 | 11.3 | 9.1 | 12.6 | 3.2 | 5.6 | 4.2 | 11.1 |
| $\phi 6$ | KQB2U06-00 | 11.4 | 22.9 | 34.9 | 12.2 | 11.5 | 13.6 | 3.2 | 5.6 | 13.4 | 18.8 |
| $\phi 8$ | KQB2U08-00 | 13.7 | 28.3 | 40.1 | 14.1 | 14.6 | 16.1 | 4.2 | 8 | 25.6 | 29.7 |
| $\phi 10$ | KQB2U10-00 | 16.6 | 34.2 | 44 | 14.4 | 17.6 | 17 | 4.2 | 8 | 40 | 47.4 |
| $\phi 12$ | KQB2U12-00 | 18.7 | 38.5 | 48.4 | 15.8 | 19.8 | 18.6 | 4.2 | 8 | 57.4 | 62.1 |
| $\phi 16$ | KQB2U16-00 | 24.6 | 49.3 | 56.6 | 17.3 | 26 | 20.8 | 4.2 | 8 | 113 | 110.2 |

Note 1) ϕD is maximum diameter.
 Note 2) Value of FEP tubing.
 Value of nylon tubing for $\phi 16$ only.



Spatter Resistant Cylinders for Arc Welding

Clamp Cylinders

Gas/Air Switching Valve

Detection Switches

Tubing

Fittings

Flow Control Equipment

Series KQB2

Applicable Tubing: Metric Size, Connection Thread: M, R, Rc

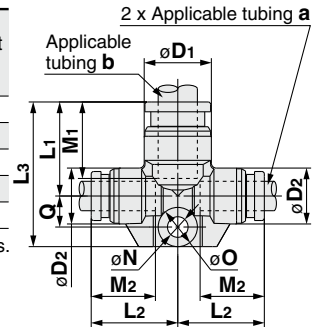
Dimensions

Different Diameter Tee: KQB2T



| Applicable tubing O.D. (mm) | | Model | Note 1) ϕD_1 | Note 1) ϕD_2 | L_1 | L_2 | L_3 | Q | M_1 | M_2 | ϕN | ϕO | Note 2) Effective area (mm ²) | Weight (g) |
|-----------------------------|-----------|------------|--------------------|--------------------|-------|-------|-------|-----|-------|-------|----------|----------|-------------------------------------------|------------|
| a | b | | | | | | | | | | | | | |
| $\phi 4$ | $\phi 6$ | KQB2T04-06 | 11.4 | 9.1 | 15.6 | 15.7 | 22.8 | 4.4 | 13.6 | 12.6 | 3.2 | 5.6 | 7.1 | 11 |
| $\phi 6$ | $\phi 8$ | KQB2T06-08 | 13.7 | 11.4 | 19.1 | 17.7 | 29.5 | 6.4 | 16.1 | 13.6 | 4.2 | 8 | 16.4 | 20 |
| $\phi 8$ | $\phi 10$ | KQB2T08-10 | 16.6 | 13.7 | 21 | 21.2 | 32.1 | 7.1 | 17 | 16.1 | 4.2 | 8 | 36 | 29.8 |
| $\phi 10$ | $\phi 12$ | KQB2T10-12 | 18.7 | 16.6 | 23.6 | 23.1 | 35.7 | 8.1 | 18.6 | 17 | 4.2 | 8 | 56 | 41.3 |
| $\phi 12$ | $\phi 16$ | KQB2T12-16 | 24.6 | 18.7 | 26.8 | 26.7 | 39.9 | 9.1 | 20.8 | 18.6 | 4.2 | 8 | 108.5 | 58 |

Note 1) ϕD_1 , ϕD_2 are maximum diameters.
Note 2) Value of FEP tubing.

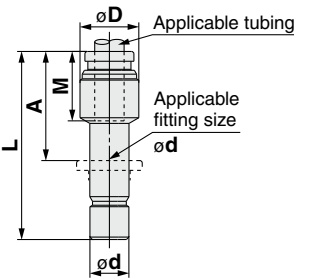


Plug-in Reducer: KQB2R



| Applicable tubing O.D. (mm) | Applicable fitting size ϕd | Model | Note 1) ϕD | L | A | M | Note 2) Effective area (mm ²) | Weight (g) |
|-----------------------------|----------------------------------|------------|------------------|------|------|------|-------------------------------------------|------------|
| $\phi 4$ | $\phi 6$ | KQB2R04-06 | 9 | 34.4 | 20.8 | 12.6 | 5.6 | 7 |
| $\phi 6$ | $\phi 8$ | KQB2R06-08 | 12 | 38.4 | 22.3 | 13.6 | 13.1 | 12.7 |
| $\phi 8$ | $\phi 10$ | KQB2R08-10 | 14 | 41.9 | 24.9 | 16.1 | 26.1 | 19.2 |
| $\phi 10$ | $\phi 12$ | KQB2R10-12 | 17 | 44.8 | 26.2 | 17 | 41.5 | 27.8 |
| $\phi 12$ | $\phi 16$ | KQB2R12-16 | 19 | 42.9 | 22.1 | 18.6 | 58.3 | 37.2 |

Note 1) ϕD is maximum diameter.
Note 2) Value of FEP tubing.

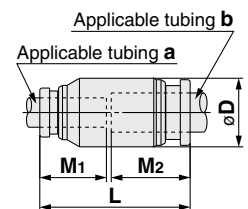


Different Diameter Straight: KQB2H



| Applicable tubing O.D. (mm) | | Model | ϕD Note 1) | L | M_1 | M_2 | Note 2) Effective area (mm ²) | Weight (g) |
|-----------------------------|-----------|------------|------------------|------|-------|-------|-------------------------------------------|------------|
| a | b | | | | | | | |
| $\phi 4$ | $\phi 6$ | KQB2H04-06 | 12 | 27.2 | 12.6 | 13.6 | 5.6 | 12.1 |
| $\phi 6$ | $\phi 8$ | KQB2H06-08 | 14 | 30.7 | 13.6 | 16.1 | 13.1 | 17.1 |
| $\phi 8$ | $\phi 10$ | KQB2H08-10 | 17 | 34.1 | 16.1 | 17 | 26.1 | 27.2 |
| $\phi 10$ | $\phi 12$ | KQB2H10-12 | 19 | 36.6 | 17 | 18.6 | 41.5 | 34.8 |
| $\phi 12$ | $\phi 16$ | KQB2H12-16 | 24.6 | 40.4 | 18.6 | 20.8 | 58.3 | 57.3 |

Note 1) ϕD is maximum diameter.
Note 2) Value of FEP tubing.

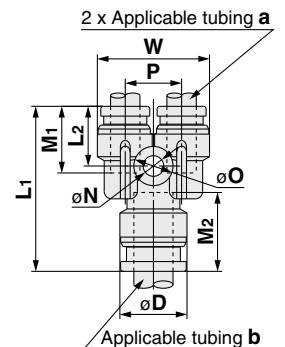


Different Diameter Union "Y": KQB2U



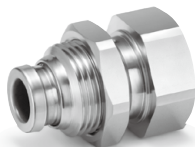
| Applicable tubing O.D. (mm) | | Model | Note 1) ϕD | L_1 | L_2 | P | W | M_1 | M_2 | ϕN | ϕO | Note 2) Effective area (mm ²) | Weight (g) |
|-----------------------------|-----------|------------|------------------|-------|-------|------|------|-------|-------|----------|----------|-------------------------------------------|------------|
| a | b | | | | | | | | | | | | |
| $\phi 4$ | $\phi 6$ | KQB2U04-06 | 11.4 | 29.3 | 11.2 | 9.1 | 18.2 | 12.6 | 13.6 | 3.2 | 5.6 | 4.2 | 11.9 |
| $\phi 6$ | $\phi 8$ | KQB2U06-08 | 13.7 | 33.7 | 12.2 | 11.5 | 22.9 | 13.6 | 16.1 | 4.2 | 8 | 13.4 | 19.3 |
| $\phi 8$ | $\phi 10$ | KQB2U08-10 | 16.6 | 38.3 | 13.8 | 14.6 | 28.3 | 16.1 | 17 | 4.2 | 8 | 25.6 | 32 |
| $\phi 10$ | $\phi 12$ | KQB2U10-12 | 18.7 | 43 | 14 | 17.6 | 34.2 | 17 | 18.6 | 4.2 | 8 | 40 | 47.6 |
| $\phi 12$ | $\phi 16$ | KQB2U12-16 | 24.6 | 47.4 | 15.6 | 19.8 | 38.5 | 18.6 | 20.8 | 4.2 | 8 | 57.4 | 67.6 |

Note 1) ϕD is maximum diameter.
Note 2) Value of FEP tubing.

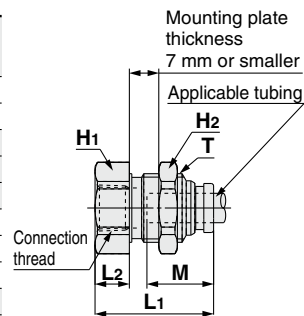


Dimensions

Bulkhead Connector: KQB2E



| Applicable tubing O.D. (mm) | Connection thread Rc | Model | T (M) | Width across flat | | L1 | L2 | Mounting hole | M | Note 1) Effective area (mm ²) | Weight (g) |
|-----------------------------|----------------------|------------|---------|-------------------|----|------|------|---------------|------|-------------------------------------------|------------|
| | | | | H1 | H2 | | | | | | |
| ø4 | 1/8 | KQB2E04-01 | M10 x 1 | 14 | 12 | 25.8 | 9.7 | 11 | 12.6 | 5.6 | 16.9 |
| | 1/4 | KQB2E04-02 | | 17 | 12 | 30.9 | 14.8 | | | | 27.1 |
| ø6 | 1/8 | KQB2E06-01 | M14 x 1 | 17 | 17 | 24.2 | 6.1 | 15 | 13.6 | 13.1 | 25 |
| | 1/4 | KQB2E06-02 | | | | 31.6 | 13.5 | | | | 33.2 |
| | 3/8 | KQB2E06-03 | | 19 | 17 | 33 | 14.9 | | | | 34.8 |
| ø8 | 1/8 | KQB2E08-01 | M15 x 1 | 17 | 19 | 26.3 | 6.9 | 16 | 16.1 | 26.1 | 28.7 |
| | 1/4 | KQB2E08-02 | | | | 32.4 | 13 | | | | 34.2 |
| | 3/8 | KQB2E08-03 | | 19 | 19 | 34 | 14.6 | | | | 35.9 |
| ø10 | 1/4 | KQB2E10-02 | M18 x 1 | 19 | 21 | 31.6 | 11.6 | 19 | 17 | 41.5 | 44 |
| | 3/8 | KQB2E10-03 | | | | 33.6 | 13.6 | | | | 40.2 |
| ø12 | 3/8 | KQB2E12-03 | M20 x 1 | 21 | 24 | 34 | 12.8 | 21 | 18.6 | 58.3 | 52 |
| | 1/2 | KQB2E12-04 | | 24 | 24 | 39.6 | 18.4 | | | | 62.5 |
| ø16 | 3/8 | KQB2E16-03 | M27 x 1 | 29 | 30 | 35.3 | 11.2 | 28 | 20.8 | 96 | 111 |
| | 1/2 | KQB2E16-04 | | | | 40.6 | 16.5 | | | | 113 |



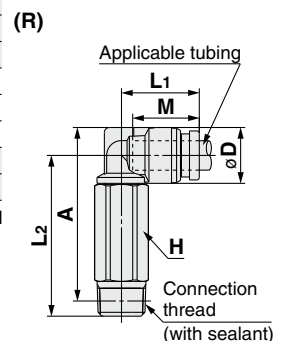
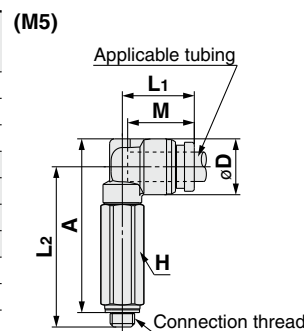
Note 1) Value of FEP tubing.
Value of nylon tubing for ø16 only.

Extended Male Elbow: KQB2W



| Applicable tubing O.D. (mm) | Connection thread R, M | Model | H (Width across flat) | Note 1) øD | L1 | L2 | A* | M | Note 2) Effective area (mm ²) | Weight (g) |
|-----------------------------|------------------------|-------------|-----------------------|------------|------|------|------|------|-------------------------------------------|------------|
| | | | | | | | | | | |
| ø4 | 1/8 | KQB2W04-01S | 10 | 14.4 | 31.7 | 33.1 | 4 | 16.2 | | |
| | 1/4 | KQB2W04-02S | 14 | 35.5 | 35.3 | 35.6 | | | | |
| ø6 | M5 x 0.8 | KQB2W06-M5 | 8 | 11.4 | 14.7 | 32.7 | 35.4 | 13.6 | 3 | 16 |
| | 1/8 | KQB2W06-01S | 10 | | 32.8 | 37.6 | 17.8 | | | |
| | 1/4 | KQB2W06-02S | 14 | | 36.6 | 37.6 | 37.2 | | | |
| ø6 | 3/8 | KQB2W06-03S | 17 | 38 | 38.6 | 60.3 | | | | |
| | 1/8 | KQB2W08-01S | 12 | 13.7 | 18.6 | 37 | 40.7 | 16.1 | 20.5 | 28.9 |
| | 1/4 | KQB2W08-02S | 14 | | 19.1 | 40.2 | 42.3 | | | 39.2 |
| 3/8 | KQB2W08-03S | 17 | 41.6 | | 43.3 | 63.7 | | | | |
| ø10 | 1/4 | KQB2W10-02S | 14 | 16.6 | 21 | 46.6 | 50.2 | 17 | 33.5 | 42.1 |
| | 3/8 | KQB2W10-03S | 17 | | | 45.9 | 49.1 | | | 64.5 |
| | 1/2 | KQB2W10-04S | 22 | | | 50.1 | 52 | | | 123 |
| ø12 | 1/4 | KQB2W12-02S | 14 | 18.7 | 23.6 | 22.6 | 47.7 | 18.6 | 47.7 | 46 |
| | 3/8 | KQB2W12-03S | 17 | | | 49 | 53.2 | | | 58.2 |
| | 1/2 | KQB2W12-04S | 22 | | | 53.2 | 56.1 | | | 118 |
| ø16 | 3/8 | KQB2W16-03S | 19 | 24.6 | 26.3 | 57.6 | 64.1 | 20.8 | 71 | 89.6 |
| | 1/2 | KQB2W16-04S | 22 | | | 27.3 | 61.4 | | | 66.6 |

* Reference dimensions after installation of R thread
Note 1) øD is maximum diameter.
Note 2) Value of FEP tubing.
Value of nylon tubing for ø16 only.



Spatter Resistant Cylinders for Arc Welding

Clamp Cylinders

Gas/Air Switching Valve

Detection Switches

Tubing

Fittings

Flow Control Equipment

Series KQB2

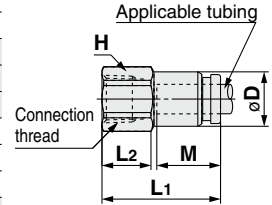
Applicable Tubing: Metric Size, Connection Thread: M, R, Rc

Dimensions

Female Connector: KQB2F



| Applicable tubing O.D. (mm) | Connection thread Rc | Model | H (Width across flat) | Note 1) ϕD | L1 | L2 | M | Note 2) Effective area (mm ²) | Weight (g) |
|-----------------------------|----------------------|------------|-----------------------|------------------|------|------|------|-------------------------------------------|------------|
| $\phi 4$ | 1/8 | KQB2F04-01 | 12 | 8.7 | 23.7 | 9.8 | 12.6 | 5.6 | 9.7 |
| | 1/4 | KQB2F04-02 | 17 | | 28.7 | 13.2 | | | 22.7 |
| $\phi 6$ | 1/8 | KQB2F06-01 | 12 | 11.1 | 24.2 | 10 | 13.6 | 13.1 | 11.1 |
| | 1/4 | KQB2F06-02 | 17 | | 29.2 | 13.4 | | | 24.3 |
| | 3/8 | KQB2F06-03 | 19 | | 30.6 | 14.2 | | | 25.8 |
| $\phi 8$ | 1/8 | KQB2F08-01 | 14 | 13.4 | 26.3 | 9.6 | 16.1 | 26.1 | 17.1 |
| | 1/4 | KQB2F08-02 | 17 | | 31.3 | 13.7 | | | 26.8 |
| | 3/8 | KQB2F08-03 | 19 | | 32.7 | 14.4 | | | 28.4 |
| $\phi 10$ | 1/4 | KQB2F10-02 | 17 | 16.4 | 31.6 | 13.9 | 17 | 41.5 | 30.3 |
| | 3/8 | KQB2F10-03 | 19 | | 33 | 14.7 | | | 32 |
| $\phi 12$ | 1/4 | KQB2F12-02 | 19 | 18.5 | 32.6 | 13.3 | 18.6 | 58.3 | 39.4 |
| | 3/8 | KQB2F12-03 | | | 34 | 14.7 | | | 33.9 |
| | 1/2 | KQB2F12-04 | 24 | | 39.3 | 18.4 | | | 52.9 |
| $\phi 16$ | 3/8 | KQB2F16-03 | 24 | 24.6 | 35.3 | 13.5 | 20.8 | 81 | 62.8 |
| | 1/2 | KQB2F16-04 | | | 40.6 | 18.8 | | | 113 |

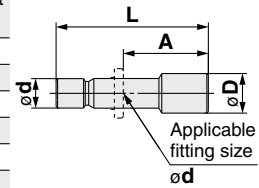


Note 1) ϕD is maximum diameter.
 Note 2) Value of FEP tubing.
 Value of nylon tubing for $\phi 16$ only.

Plug: KQB2P



| Applicable fitting size ϕd | Model | ϕD | L | A | Weight (g) |
|----------------------------------|----------|----------|------|------|------------|
| $\phi 4$ | KQB2P-04 | 6 | 29.6 | 17 | 4.3 |
| $\phi 6$ | KQB2P-06 | 8 | 30.8 | 17.2 | 9 |
| $\phi 8$ | KQB2P-08 | 10 | 33.7 | 17.6 | 16.3 |
| $\phi 10$ | KQB2P-10 | 12 | 34.6 | 17.6 | 25.4 |
| $\phi 12$ | KQB2P-12 | 14 | 36.5 | 17.9 | 37.8 |
| $\phi 16$ | KQB2P-16 | 18 | 38.6 | 17.8 | 69.2 |



Metal One-touch Fittings

Applicable Tubing: Inch Size, Connection Thread: UNF, NPT

Series **KQB2**

RoHS



Applicable Tubing

| | |
|-------------|--------------------------------------------|
| Tubing O.D. | ø1/8", ø5/32", ø1/4", ø5/16", ø3/8", ø1/2" |
|-------------|--------------------------------------------|

Specifications

| | |
|--------------------------------------------------|----------------------------------------------|
| Fluid | Air, Water |
| Operating pressure range ^{Note 1)} | -100 kPa to 1 MPa ^{Note 2)} |
| Proof pressure | 3.0 MPa |
| Ambient and fluid temperature ^{Note 3)} | -5 to 150°C (No freezing) ^{Note 2)} |
| Lubricant | Grease-free specification |
| Seal on the threads | With sealant |

Note 1) Avoid using in a vacuum holding application such as a leak tester, since there is leakage.

Note 2) Check the operating pressure range and operating temperature range of the tubing.

Note 3) It is recommended that you use the inner sleeve in the following conditions (Except ø1/8"):

- When using in an environment where the fluid temperature changes drastically.
- When using at a high temperature.

* Temperature Condition of Mounting the Inner Sleeve

| Tubing | Temperature |
|----------------------------|---------------|
| FEP tubing/Series TH | 80°C or more |
| Super PFA tubing/Series TL | 120°C or more |

Spare Parts

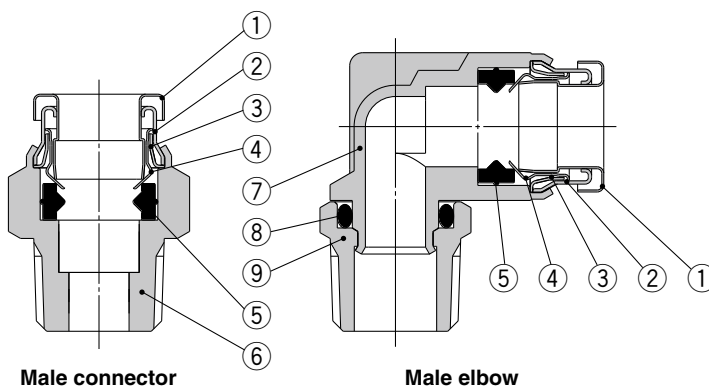
| Description | Tubing O.D. | Part no. | Material |
|--------------|-------------|-------------------|------------------------------------|
| Gasket | — | M-5G3 | Stainless steel 316, Special FKM |
| Bulkhead nut | ø1/8" | KQB201-P01 | C3604 (Electroless nickel plating) |
| | ø5/32" | | |
| | ø1/4" | | |
| | ø5/16" | | |
| | ø3/8" | | |
| | ø1/2" | KQB213-P01 | |

Cross Reference Table of the Inner Sleeve

| Tubing O.D. | Tubing material | | Applicable inner sleeve | |
|-------------|-----------------|--------------------|-------------------------|--------|
| | TH/THI (FEP) | TL/TIL (Super PFA) | Part no. | Length |
| ø5/32" | TH0402 | — | TJ-0402 | 18 |
| | TH0425 | — | TJ-0425 | 18 |
| ø1/4" | — | TL0403 | TJ-0403 | 18 |
| | TIHB07 | TIL07 | TJ-0604 | 19 |
| ø5/16" | TIHA07 | — | TJ-0746 | 19 |
| | TH0806 | TL0806 | TJ-0806 | 20.5 |
| ø3/8" | TIHB11 | TIL11 | TJ-1065 | 23 |
| | TIHA11 | — | TJ-1107 | 23 |
| ø1/2" | TIH13 | TIL13 | TJ-1395 | 24 |

* C2700 + Electroless nickel plating is used for the TJ series.

Construction



Component Parts

| No. | Description | Material |
|-----|---------------------|------------------------------------|
| 1 | Release button | Stainless steel 304 |
| 2 | Guide 1 | Stainless steel 304 |
| 3 | Guide 2 | Stainless steel 304 |
| 4 | Chuck | Stainless steel 304 |
| 5 | Seal | Special FKM (Fluoro coated) |
| 6 | Male connector body | C3604 (Electroless nickel plating) |
| 7 | Male elbow body | Stainless steel 316 |
| 8 | O-ring | Special FKM (Fluoro coated) |
| 9 | Stud | C3604 (Electroless nickel plating) |

Spatter Resistant Cylinders for Arc Welding

Clamp Cylinders

Gas/Air Switching Valve

Detection Switches

Tubing

Fittings

Flow Control Equipment

Series KQB2

Applicable Tubing: Inch Size, Connection Thread: UNF, NPT

Dimensions

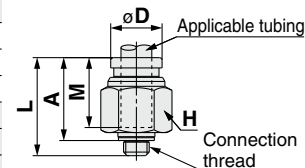
Male Connector: KQB2H



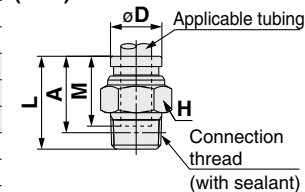
| Applicable tubing O.D. (inch) | Connection thread UNF, NPT | Model | H (Width across flat) | Note 1) ϕD | L | A* | M | Note 2) Effective area (mm ²) | Weight (g) |
|-------------------------------|----------------------------|--------------|-----------------------|------------------|------|------|------|-------------------------------------------|------------|
| $\phi 1/8"$ | 10-32UNF | KQB2H01-32 | 8 | 8 | 16.5 | 13.5 | 12 | 3 | 3.5 |
| | 1/8 | KQB2H01-N01S | 11.11 | | 17.1 | 13.9 | | 3.4 | 7.9 |
| | 1/4 | KQB2H01-N02S | 14.29 | | 20.9 | 16.5 | | 18 | |
| $\phi 5/32"$ | 10-32UNF | KQB2H03-32 | 11.11 | 8.7 | 17.1 | 14.1 | 12.6 | 4 | 6.5 |
| | 1/8 | KQB2H03-N01S | | | 17 | 13.8 | | 5.6 | 7.4 |
| | 1/4 | KQB2H03-N02S | | | 20.9 | 16.5 | | 17.5 | |
| $\phi 1/4"$ | 10-32UNF | KQB2H07-32 | 12.7 | 11.2 | 19 | 16 | 13.5 | 4 | 9 |
| | 1/8 | KQB2H07-N01S | | | 20 | 16.8 | | 9.8 | |
| | 1/4 | KQB2H07-N02S | | | 20.6 | 16.2 | | 13.1 | 15.1 |
| | 3/8 | KQB2H07-N03S | | | 23.8 | 19.1 | | 31 | |
| $\phi 5/16"$ | 1/8 | KQB2H09-N01S | 14.29 | 13.4 | 24.2 | 21 | 16.1 | 26.1 | 13.8 |
| | 1/4 | KQB2H09-N02S | | | 23.1 | 18.7 | | 14.9 | |
| | 3/8 | KQB2H09-N03S | | | 24.6 | 19.9 | | 28.3 | |
| $\phi 3/8"$ | 1/8 | KQB2H11-N01S | 17.46 | 16 | 25 | 21.8 | 16.6 | 26.1 | 21.5 |
| | 1/4 | KQB2H11-N02S | | | 26.3 | 21.9 | | 22.3 | |
| | 3/8 | KQB2H11-N03S | | | 23.6 | 18.9 | | 41.5 | 24.4 |
| | 1/2 | KQB2H11-N04S | | | 28.3 | 21.9 | | 55 | |
| $\phi 1/2"$ | 1/4 | KQB2H13-N02S | 22.23 | 19.3 | 30.5 | 26.1 | 18.5 | 58.3 | 39.4 |
| | 3/8 | KQB2H13-N03S | | | 28.4 | 23.7 | | 36.8 | |
| | 1/2 | KQB2H13-N04S | | | 22 | 22 | | 46.1 | |

* Reference dimensions after installation of NPT thread
 Note 1) ϕD is maximum diameter.
 Note 2) Value of FEP tubing.

(10-32UNF)



(NPT)



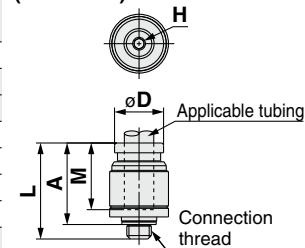
Hexagon Socket Head Male Connector: KQB2S



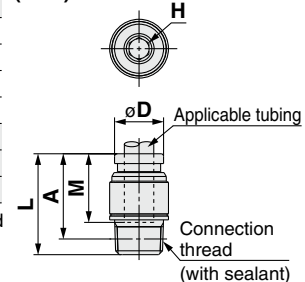
| Applicable tubing O.D. (inch) | Connection thread UNF, NPT | Model | H (Width across flat) | Note 1) ϕD | L | A* | M | Note 2) Effective area (mm ²) | Weight (g) | |
|-------------------------------|----------------------------|--------------|-----------------------|------------------|------|------|------|-------------------------------------------|------------|------|
| $\phi 1/8"$ | 10-32UNF | KQB2S01-32 | 2 | 9 | 16.5 | 13.5 | 12 | 3 | 3.9 | |
| $\phi 5/32"$ | 10-32UNF | KQB2S03-32 | 2 | 9 | 17.1 | 14.1 | 12.6 | 4 | 3.9 | |
| | 1/8 | KQB2S03-N01S | 2.78 | 11 | 21.4 | 18.2 | | 4.1 | 8.9 | |
| $\phi 1/4"$ | 10-32UNF | KQB2S07-32 | 2 | 12 | 19.5 | 16.5 | 13.5 | 4 | 7.5 | |
| | 1/8 | KQB2S07-N01S | 4.76 | | 14 | 20.5 | | 17.3 | 10 | 8.5 |
| | 1/4 | KQB2S07-N02S | | | | 16.1 | | 10.7 | 14.1 | |
| | 3/8 | KQB2S07-N03S | | | | 18 | | 21.5 | 16.8 | 23.8 |
| $\phi 5/16"$ | 1/8 | KQB2S09-N01S | | 5.56 | | 14 | 24.7 | 21.5 | 16.1 | 17.2 |
| | 1/4 | KQB2S09-N02S | 6.35 | 18 | 23.1 | | 18.7 | 23.3 | | 13.4 |
| | 3/8 | KQB2S09-N03S | | | 18.4 | | 24.7 | | | |
| $\phi 3/8"$ | 1/8 | KQB2S11-N01S | | | 5.56 | 17 | 25.2 | 22 | 16.6 | 17.2 |
| | 1/4 | KQB2S11-N02S | 6.35 | 18 | 27.1 | | 22.7 | 39 | | 22.2 |
| | 3/8 | KQB2S11-N03S | | | 22 | | 23.6 | 18.9 | | 25 |
| | 1/2 | KQB2S11-N04S | | | | | | 17.2 | | 40.6 |
| $\phi 1/2"$ | 1/4 | KQB2S13-N02S | | | 8 | 20 | 30.5 | 26.1 | 18.5 | 46 |
| | 3/8 | KQB2S13-N03S | 9.53 | 22 | 29.4 | | 24.7 | 60 | | 30.4 |
| | 1/2 | KQB2S13-N04S | | | 25.5 | | 19.1 | 36.5 | | |

* Reference dimensions after installation of NPT thread
 Note 1) ϕD is maximum diameter.
 Note 2) Value of FEP tubing.

(10-32UNF)



(NPT)

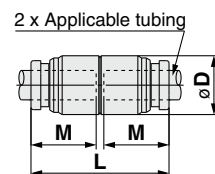


Straight Union: KQB2H



| Applicable tubing O.D. (inch) | Model | ϕD Note 1) | L | M | Note 2) Effective area (mm ²) | Weight (g) |
|-------------------------------|------------|------------------|------|------|-------------------------------------------|------------|
| $\phi 1/8"$ | KQB2H01-00 | 9 | 25 | 12 | 3.4 | 6.8 |
| $\phi 5/32"$ | KQB2H03-00 | 9 | 26.2 | 12.6 | 5.6 | 6.8 |
| $\phi 1/4"$ | KQB2H07-00 | 12 | 28 | 13.5 | 13.1 | 11.5 |
| $\phi 5/16"$ | KQB2H09-00 | 14 | 33.2 | 16.1 | 26.1 | 17.4 |
| $\phi 3/8"$ | KQB2H11-00 | 16 | 34.2 | 16.6 | 41.5 | 23.7 |
| $\phi 1/2"$ | KQB2H13-00 | 20 | 38 | 18.5 | 58.3 | 37 |

Note 1) ϕD is maximum diameter.
 Note 2) Value of FEP tubing.



Dimensions

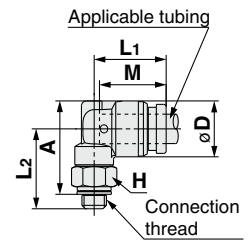
Male Elbow: KQB2L



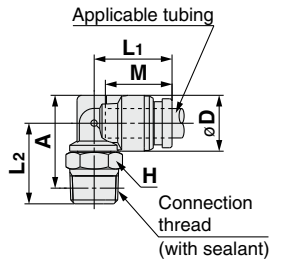
| Applicable tubing O.D. (inch) | Connection thread UNF, NPT | Model | H (Width across flat) | Note 1) ϕD | L1 | L2 | A* | M | Note 2) Effective area (mm ²) | Weight (g) |
|-------------------------------|----------------------------|--------------|-----------------------|------------------|------|------|------|------|-------------------------------------------|------------|
| $\phi 1/8"$ | 10-32UNF | KQB2L01-32 | 8 | 8.3 | 13.1 | 14.8 | 16 | 12 | 2.6 | 6.5 |
| | 1/8 | KQB2L01-N01S | 11.11 | | 13.6 | 14.9 | 15.8 | | 3 | 8.8 |
| | 1/4 | KQB2L01-N02S | 14.29 | | 18.7 | 18.4 | 17.7 | | | |
| $\phi 5/32"$ | 10-32UNF | KQB2L03-32 | 8 | 9.1 | 13.7 | 15.2 | 16.8 | 12.6 | 3.5 | 7 |
| | 1/8 | KQB2L03-N01S | 11.11 | | 14.4 | 15.3 | 16.6 | | 4.2 | 9.7 |
| | 1/4 | KQB2L03-N02S | 14.29 | | 19.1 | 19.2 | 18.5 | | | |
| $\phi 1/4"$ | 10-32UNF | KQB2L07-32 | 8 | 11.7 | 14.7 | 16.5 | 19.3 | 13.5 | 3.5 | 9.1 |
| | 1/8 | KQB2L07-N01S | 11.11 | | 15.9 | 16.6 | 19.2 | | 11.4 | 11.4 |
| | 1/4 | KQB2L07-N02S | 14.29 | | 20.4 | 21.8 | 20.3 | | 33.7 | |
| | 3/8 | KQB2L07-N03S | 17.46 | | 22.2 | 23.3 | 35.2 | | | |
| $\phi 5/16"$ | 10-32UNF | KQB2L09-32 | 8 | 13.7 | 18.6 | 18.3 | 21.9 | 16.1 | 21.6 | 15.8 |
| | 1/8 | KQB2L09-N01S | 11.11 | | 19.1 | 21.5 | 23.9 | | 21.9 | 21.9 |
| | 1/4 | KQB2L09-N02S | 14.29 | | 23.3 | 25.4 | 35 | | | |
| $\phi 3/8"$ | 10-32UNF | KQB2L11-32 | 8 | 16 | 20 | 19.4 | 24.2 | 16.6 | 21.6 | 20.5 |
| | 1/8 | KQB2L11-N01S | 11.11 | | 21 | 22.6 | 26.2 | | 23.9 | 23.9 |
| | 1/4 | KQB2L11-N02S | 14.29 | | 24.4 | 27.7 | 35.8 | | 35.8 | |
| $\phi 1/2"$ | 10-32UNF | KQB2L13-32 | 8 | 19.6 | 22.7 | 24.4 | 29.8 | 18.5 | 50.2 | 30.1 |
| | 3/8 | KQB2L13-N03S | 17.46 | | 23.7 | 26.1 | 31.2 | | 37.9 | 37.9 |
| | 1/2 | KQB2L13-N04S | 22.23 | | 29.9 | 33.3 | 63.8 | | 63.8 | |

* Reference dimensions after installation of NPT thread
 Note 1) ϕD is maximum diameter.
 Note 2) Value of FEP tubing.

(10-32UNF)



(NPT)



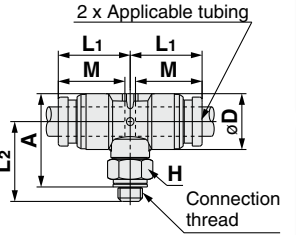
Male Branch Tee: KQB2T



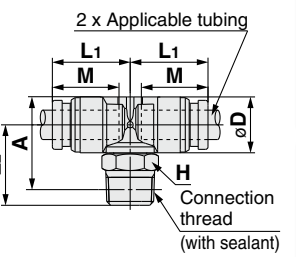
| Applicable tubing O.D. (inch) | Connection thread UNF, NPT | Model | H (Width across flat) | Note 1) ϕD | L1 | L2 | A* | M | Note 2) Effective area (mm ²) | Weight (g) |
|-------------------------------|----------------------------|--------------|-----------------------|------------------|------|------|------|------|-------------------------------------------|------------|
| $\phi 1/8"$ | 10-32UNF | KQB2T01-32 | 8 | 8.3 | 13.1 | 14.8 | 16 | 12 | 3.2 | 8.2 |
| | 1/8 | KQB2T01-N01S | 11.11 | | 13.6 | 14.9 | 15.8 | | 3.4 | 10.6 |
| | 1/4 | KQB2T01-N02S | 14.29 | | 18.7 | 18.4 | 19.5 | | | |
| $\phi 5/32"$ | 10-32UNF | KQB2T03-32 | 8 | 9.1 | 13.7 | 15.2 | 16.8 | 12.6 | 4.5 | 9.1 |
| | 1/8 | KQB2T03-N01S | 11.11 | | 14.4 | 15.3 | 16.6 | | 6 | 11.6 |
| | 1/4 | KQB2T03-N02S | 14.29 | | 19.1 | 19.2 | 20.5 | | | |
| $\phi 1/4"$ | 10-32UNF | KQB2T07-32 | 8 | 11.7 | 14.7 | 16.5 | 19.3 | 13.5 | 4.5 | 12.3 |
| | 1/8 | KQB2T07-N01S | 11.11 | | 15.9 | 16.6 | 19.2 | | 13.9 | 14.9 |
| | 1/4 | KQB2T07-N02S | 14.29 | | 20.4 | 21.8 | 23.8 | | 37.1 | |
| | 3/8 | KQB2T07-N03S | 17.46 | | 22.2 | 23.3 | 40.3 | | | |
| $\phi 5/16"$ | 10-32UNF | KQB2T09-32 | 8 | 13.7 | 18.6 | 18.3 | 21.9 | 16.1 | 26.3 | 21.2 |
| | 1/8 | KQB2T09-N01S | 11.11 | | 19.1 | 21.5 | 23.9 | | 27.1 | 27.1 |
| | 1/4 | KQB2T09-N02S | 14.29 | | 23.3 | 25.4 | 40.3 | | | |
| $\phi 3/8"$ | 10-32UNF | KQB2T11-32 | 8 | 16 | 20 | 19.4 | 24.2 | 16.6 | 40.8 | 28.1 |
| | 1/8 | KQB2T11-N01S | 11.11 | | 21 | 22.6 | 26.2 | | 31.1 | 31.1 |
| | 1/4 | KQB2T11-N02S | 14.29 | | 24.4 | 27.7 | 43.1 | | 43.1 | |
| $\phi 1/2"$ | 10-32UNF | KQB2T13-32 | 8 | 19.6 | 22.7 | 24.4 | 29.8 | 18.5 | 57.2 | 41.8 |
| | 3/8 | KQB2T13-N03S | 17.46 | | 23.7 | 26.1 | 31.2 | | 49 | 49 |
| | 1/2 | KQB2T13-N04S | 22.23 | | 29.9 | 33.3 | 74.9 | | 74.9 | |

* Reference dimensions after installation of NPT thread
 Note 1) ϕD is maximum diameter.
 Note 2) Value of FEP tubing.

(10-32UNF)



(NPT)

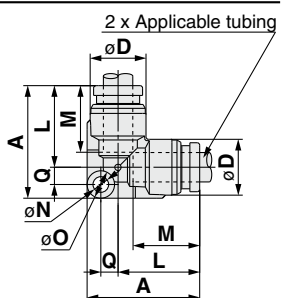


Union Elbow: KQB2L



| Applicable tubing O.D. (inch) | Model | Note 1) ϕD | L | A | Q | M | ϕN | ϕO | Note 2) Effective area (mm ²) | Weight (g) |
|-------------------------------|------------|------------------|------|------|-----|------|----------|----------|-------------------------------------------|------------|
| $\phi 1/8"$ | KQB2L01-00 | 8.3 | 13.6 | 19.3 | 2.9 | 12 | 3.2 | 5.6 | 3 | 6.3 |
| $\phi 5/32"$ | KQB2L03-00 | 9.1 | 14.6 | 20.5 | 3.1 | 12.6 | 3.2 | 5.6 | 4.2 | 7.4 |
| $\phi 1/4"$ | KQB2L07-00 | 11.7 | 16.7 | 23.2 | 3.7 | 13.5 | 3.2 | 5.6 | 11.4 | 11.5 |
| $\phi 5/16"$ | KQB2L09-00 | 13.7 | 20.1 | 29.1 | 5 | 16.1 | 4.2 | 8 | 21.6 | 20.2 |
| $\phi 3/8"$ | KQB2L11-00 | 16 | 21.4 | 31.1 | 5.7 | 16.6 | 4.2 | 8 | 35.2 | 28.2 |
| $\phi 1/2"$ | KQB2L13-00 | 19.6 | 24.9 | 35.3 | 6.4 | 18.5 | 4.2 | 8 | 50.2 | 41.7 |

Note 1) ϕD is maximum diameter.
 Note 2) Value of FEP tubing.



Series KQB2

Applicable Tubing: Inch Size, Connection Thread: UNF, NPT

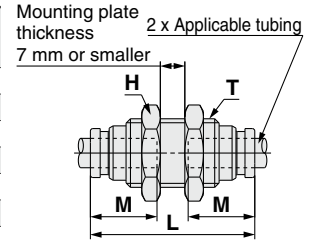
Dimensions

Bulkhead Union: KQB2E



| Applicable tubing O.D. (inch) | Model | T (UNF) | H (Width across flat) | L | Mounting hole | M | Note 2) Effective area (mm ²) | Weight (g) |
|-------------------------------|------------|------------|-----------------------|------|---------------|------|-------------------------------------------|------------|
| ø1/8" | KQB2E01-00 | 7/16-20UNF | 14.29 | 34.2 | 12.5 | 12 | 3.4 | 21.8 |
| ø5/32" | KQB2E03-00 | 7/16-20UNF | 14.29 | 34.4 | 12.5 | 12.6 | 5.6 | 21.6 |
| ø1/4" | KQB2E07-00 | 1/2-20UNF | 17.46 | 36.2 | 14 | 13.5 | 13.1 | 30.2 |
| ø5/16" | KQB2E09-00 | 5/8-18UNF | 22.23 | 41.2 | 17 | 16.1 | 26.1 | 43.9 |
| ø3/8" | KQB2E11-00 | 3/4-16UNF | 22.23 | 42.4 | 20.5 | 16.6 | 41.5 | 64.2 |
| ø1/2" | KQB2E13-00 | 7/8-14UNF | 25.4 | 47 | 23.5 | 18.5 | 58.3 | 94.2 |

Note) Value of FEP tubing.

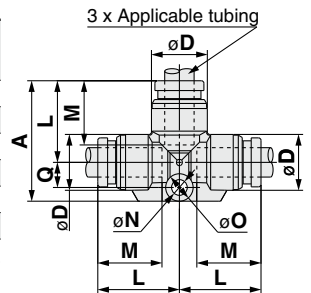


Union Tee: KQB2T



| Applicable tubing O.D. (inch) | Model | Note 1) øD | L | A | Q | M | øN | øO | Note 2) Effective area (mm ²) | Weight (g) |
|-------------------------------|------------|------------|------|------|-----|------|-----|-----|-------------------------------------------|------------|
| ø1/8" | KQB2T01-00 | 8.3 | 13.6 | 20.5 | 4.1 | 12 | 3.2 | 5.6 | 3.4 | 7.9 |
| ø5/32" | KQB2T03-00 | 9.1 | 14.6 | 21.8 | 4.4 | 12.6 | 3.2 | 5.6 | 6.4 | 9.5 |
| ø1/4" | KQB2T07-00 | 11.7 | 16.7 | 24.7 | 5.2 | 13.5 | 3.2 | 5.6 | 13.4 | 14.7 |
| ø5/16" | KQB2T09-00 | 13.7 | 20.1 | 31.1 | 7 | 16.1 | 4.2 | 8 | 25.6 | 24.4 |
| ø3/8" | KQB2T11-00 | 16 | 21.4 | 33.4 | 8 | 16.6 | 4.2 | 8 | 40 | 34.7 |
| ø1/2" | KQB2T13-00 | 19.6 | 24.9 | 37.9 | 9 | 18.5 | 4.2 | 8 | 57.4 | 52.3 |

Note 1) øD is maximum diameter.
Note 2) Value of FEP tubing.

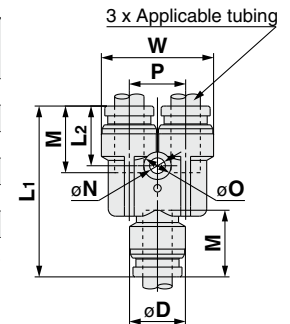


Union "Y": KQB2U



| Applicable tubing O.D. (inch) | Model | Note 1) øD | W | L1 | L2 | P | M | øN | øO | Note 2) Effective area (mm ²) | Weight (g) |
|-------------------------------|------------|------------|------|------|------|------|------|-----|-----|-------------------------------------------|------------|
| ø1/8" | KQB2U01-00 | 8.3 | 16.4 | 29 | 11 | 8.1 | 12 | 3.2 | 5.6 | 3.4 | 9.2 |
| ø5/32" | KQB2U03-00 | 9.1 | 18.2 | 30.4 | 11.3 | 9.1 | 12.6 | 3.2 | 5.6 | 4.2 | 11.1 |
| ø1/4" | KQB2U07-00 | 11.7 | 23.9 | 34.5 | 12.1 | 12.2 | 13.5 | 3.2 | 5.6 | 13.4 | 19.6 |
| ø5/16" | KQB2U09-00 | 13.7 | 28.3 | 40.1 | 14.1 | 14.6 | 16.1 | 4.2 | 8 | 25.6 | 29.7 |
| ø3/8" | KQB2U11-00 | 16 | 33.2 | 42.2 | 14 | 17.2 | 16.6 | 4.2 | 8 | 40 | 43.1 |
| ø1/2" | KQB2U13-00 | 19.6 | 40.2 | 47.3 | 15.8 | 20.6 | 18.5 | 4.2 | 8 | 57.4 | 66.4 |

Note 1) øD is maximum diameter.
Note 2) Value of FEP tubing.

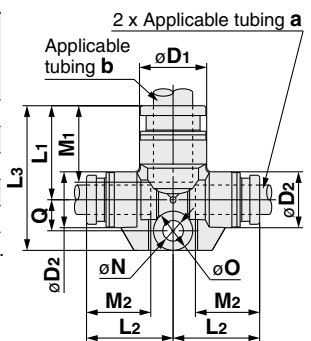


Different Diameter Tee: KQB2T



| Applicable tubing O.D. (inch) | Model | Note 1) øD1 | Note 1) øD2 | L1 | L2 | L3 | Q | M1 | M2 | øN | øO | Note 2) Effective area (mm ²) | Weight (g) |
|-------------------------------|------------|-------------|-------------|------|------|------|-----|------|------|-----|-----|-------------------------------------------|------------|
| ø1/8" ø5/32" | KQB2T01-03 | 9.1 | 8.3 | 14.2 | 14.1 | 21.1 | 4.1 | 12.6 | 12 | 3.2 | 5.6 | 3.8 | 8.5 |
| ø5/32" ø1/4" | KQB2T03-07 | 11.7 | 9.1 | 15.5 | 15.9 | 22.7 | 4.4 | 13.5 | 12.6 | 3.2 | 5.6 | 7.1 | 11.7 |
| ø1/4" ø5/16" | KQB2T07-09 | 13.7 | 11.7 | 19.3 | 17.6 | 29.6 | 6.3 | 16.1 | 13.5 | 4.2 | 8 | 16.4 | 20.2 |
| ø5/16" ø3/8" | KQB2T09-11 | 16 | 13.7 | 20.6 | 21 | 31.7 | 7.1 | 16.6 | 16.1 | 4.2 | 8 | 36 | 28.9 |
| ø3/8" ø1/2" | KQB2T11-13 | 19.6 | 16 | 23.3 | 23 | 35.4 | 8.1 | 18.5 | 16.6 | 4.2 | 8 | 56 | 41.8 |

Note 1) øD1, øD2 are maximum diameters.
Note 2) Value of FEP tubing.

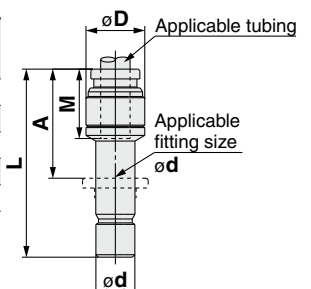


Plug-in Reducer: KQB2R



| Applicable tubing O.D. (inch) | Applicable fitting size ød | Model | Note 1) øD | L | A | M | Note 2) Effective area (mm ²) | Weight (g) |
|-------------------------------|----------------------------|------------|------------|------|------|------|-------------------------------------------|------------|
| ø1/8" | ø5/32" | KQB2R01-03 | 9 | 32.9 | 20.3 | 12 | 3.4 | 4.9 |
| ø5/32" | ø1/4" | KQB2R03-07 | 9 | 33.7 | 20.2 | 12.6 | 5.6 | 7.4 |
| ø1/4" | ø5/16" | KQB2R07-09 | 12 | 38.4 | 22.3 | 13.5 | 13.1 | 12.5 |
| ø5/16" | ø3/8" | KQB2R09-11 | 14 | 41.6 | 25 | 16.1 | 26.1 | 17.7 |
| ø3/8" | ø1/2" | KQB2R11-13 | 17 | 39.8 | 21.3 | 16.6 | 41.5 | 24.7 |

Note 1) øD is maximum diameter.
Note 2) Value of FEP tubing.

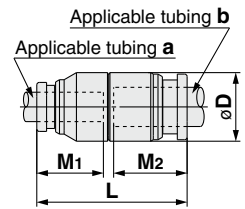


Dimensions

Different Diameter Straight: KQB2H



| Applicable tubing O.D. (inch) | | Model | øD Note 1) | L | M1 | M2 | Note 2) Effective area (mm ²) | Weight (g) |
|-------------------------------|--------|------------|------------|------|------|------|-------------------------------------------|------------|
| a | b | | | | | | | |
| ø1/8" | ø5/32" | KQB2H01-03 | 9 | 25.6 | 12 | 12.6 | 3.4 | 6.8 |
| ø5/32" | ø1/4" | KQB2H03-07 | 12 | 27.1 | 12.6 | 13.5 | 5.6 | 11.9 |
| ø1/4" | ø5/16" | KQB2H07-09 | 14 | 30.6 | 13.5 | 16.1 | 13.1 | 16.8 |
| ø5/16" | ø3/8" | KQB2H09-11 | 16 | 33.7 | 16.1 | 16.6 | 26.1 | 23.9 |
| ø3/8" | ø1/2" | KQB2H11-13 | 20 | 36.1 | 16.6 | 18.5 | 41.5 | 38.8 |

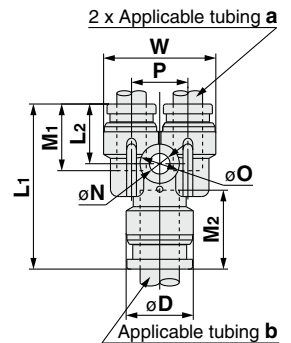


Note 1) øD is maximum diameter.
Note 2) Value of FEP tubing.

Different Diameter Union "Y": KQB2U

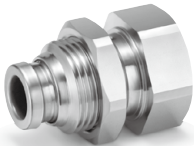


| Applicable tubing O.D. (inch) | | Model | Note 1) øD | L1 | L2 | P | W | M1 | M2 | øN | øO | Note 2) Effective area (mm ²) | Weight (g) |
|-------------------------------|--------|------------|------------|------|------|------|------|------|------|-----|-----|-------------------------------------------|------------|
| a | b | | | | | | | | | | | | |
| ø1/8" | ø5/32" | KQB2U01-03 | 9.1 | 27 | 10.8 | 8.1 | 16.4 | 12 | 12.6 | 3.2 | 5.6 | 3.2 | 8.5 |
| ø5/32" | ø1/4" | KQB2U03-07 | 11.7 | 28.8 | 11.4 | 9.1 | 18.2 | 12.6 | 13.5 | 3.2 | 5.6 | 4.2 | 11.8 |
| ø1/4" | ø5/16" | KQB2U07-09 | 13.7 | 33.8 | 12 | 12.2 | 23.9 | 13.5 | 16.1 | 4.2 | 8 | 13.4 | 20 |
| ø5/16" | ø3/8" | KQB2U09-11 | 16 | 38.3 | 13.8 | 14.6 | 28.3 | 16.1 | 16.6 | 4.2 | 8 | 25.6 | 31 |
| ø3/8" | ø1/2" | KQB2U11-13 | 19.6 | 40.5 | 13.7 | 17.2 | 33.2 | 16.6 | 18.5 | 4.2 | 8 | 40 | 45 |

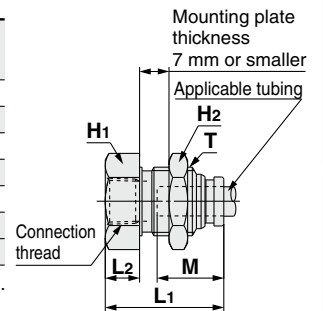


Note 1) øD is maximum diameter.
Note 2) Value of FEP tubing.

Bulkhead Connector: KQB2E



| Applicable tubing O.D. (inch) | Connection thread NPT | Model | T (UNF) | Width across flat | | L1 | L2 | Mounting hole | M | Note) Effective area (mm ²) | Weight (g) |
|-------------------------------|-----------------------|-------------|------------|-------------------|-------|------|------|---------------|------|-----------------------------------------|------------|
| | | | | H1 | H2 | | | | | | |
| ø1/8" | 1/4 | KQB2E01-N02 | 7/16-20UNF | 17.46 | 14.29 | 32.8 | 15.3 | 12.5 | 12 | 3.4 | 34.1 |
| ø5/32" | 1/4 | KQB2E03-N02 | 7/16-20UNF | 17.46 | 14.29 | 32.6 | 15.3 | 12.5 | 12.6 | 5.6 | 33.5 |
| ø1/4" | 1/4 | KQB2E07-N02 | 1/2-20UNF | 17.46 | 17.46 | 33.1 | 14.8 | 14 | 13.5 | 13.1 | 36.5 |
| ø5/16" | 3/8 | KQB2E09-N03 | 5/8-18UNF | 22.23 | 22.23 | 35.8 | 15.1 | 17 | 16.1 | 26.1 | 56.1 |
| ø3/8" | 3/8 | KQB2E11-N03 | 3/4-16UNF | 22.23 | 22.23 | 35.2 | 13.7 | 20.5 | 16.6 | 41.5 | 62.9 |
| ø1/2" | 3/8 | KQB2E13-N03 | 7/8-14UNF | 23.81 | 25.4 | 34.6 | 11 | 23.5 | 18.5 | 58.3 | 76.6 |
| | 1/2 | KQB2E13-N04 | | | | 42.2 | 18.6 | | | | 80.2 |

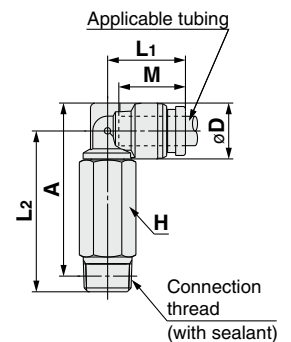


Note) Value of FEP tubing.

Extended Male Elbow: KQB2W



| Applicable tubing O.D. (inch) | Connection thread NPT | Model | H (Width across flat) | Note 1) øD | L1 | L2 | A* | M | Note 2) Effective area (mm ²) | Weight (g) |
|-------------------------------|-----------------------|--------------|-----------------------|------------|------|------|------|------|-------------------------------------------|------------|
| | | | | | | | | | | |
| | 1/4 | KQB2W01-N02S | 14.29 | 35.4 | 35.1 | 37.3 | | | | |
| ø5/32" | 1/8 | KQB2W03-N01S | 11.11 | 9.1 | 14.4 | 32 | 33.3 | 12.6 | 4 | 20.3 |
| | 1/4 | KQB2W03-N02S | 14.29 | | | 35.8 | 35.9 | | | 38.2 |
| ø1/4" | 1/8 | KQB2W07-N01S | 11.11 | 11.7 | 15.9 | 33.3 | 35.9 | 13.5 | 10.9 | 22.1 |
| | 1/4 | KQB2W07-N02S | 14.29 | | | 37.1 | 38.5 | | | 39.9 |
| | 3/8 | KQB2W07-N03S | 17.46 | | | 38.9 | 40 | | | 65.6 |
| | 1/8 | KQB2W09-N01S | 12.7 | | | 13.7 | 18.6 | | | 34.7 |
| 1/4 | KQB2W09-N02S | 14.29 | 40.2 | 42.6 | 41.6 | | | | | |
| 3/8 | KQB2W09-N03S | 17.46 | 42 | 44.1 | 68.5 | | | | | |
| ø3/8" | 1/4 | KQB2W11-N02S | 14.29 | 16 | 21 | 47.2 | 50.8 | 16.6 | 33.5 | 44.9 |
| | 3/8 | KQB2W11-N03S | 17.46 | | | 45.4 | 48.7 | | | 67.8 |
| | 1/2 | KQB2W11-N04S | 22.23 | | | 49.2 | 50.8 | | | 124.2 |
| ø1/2" | 1/4 | KQB2W13-N02S | 14.29 | 19.6 | 23.7 | 22.7 | 49 | 18.5 | 47.7 | 51.1 |
| | 3/8 | KQB2W13-N03S | 17.46 | | | 50.7 | 55.8 | | | 66 |
| | 1/2 | KQB2W13-N04S | 22.23 | | | 54.5 | 57.9 | | | 125.9 |



* Reference dimensions after installation of NPT thread
Note 1) øD is maximum diameter.
Note 2) Value of FEP tubing.

Spatter Resistant Cylinders for Arc Welding

Clamp Cylinders

Gas/Air Switching Valve

Detection Switches

Tubing

Fittings

Flow Control Equipment

Series KQB2

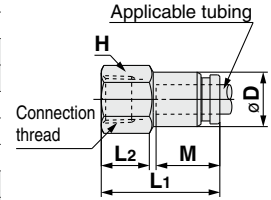
Applicable Tubing: Inch Size, Connection Thread: UNF, NPT

Dimensions

Female Connector: KQB2F



| Applicable tubing O.D. (inch) | Connection thread NPT | Model | H (Width across flat) | Note 1) ϕD | L1 | L2 | M | Note 2) Effective area (mm ²) | Weight (g) |
|-------------------------------|-----------------------|-------------|-----------------------|------------------|------|------|------|-------------------------------------------|------------|
| $\phi 1/8$ " | 1/8 | KQB2F01-N01 | 12.7 | 8 | 24.1 | 10.4 | 12 | 3.4 | 11.3 |
| | 1/4 | KQB2F01-N02 | 17.46 | | 29.1 | 13.7 | | | 25.4 |
| $\phi 5/32$ " | 1/8 | KQB2F03-N01 | 12.7 | 8.7 | 24.6 | 10.5 | 12.6 | 5.6 | 11.8 |
| | 1/4 | KQB2F03-N02 | 17.46 | | 29.6 | 13.8 | | | 25.9 |
| $\phi 1/4$ " | 1/8 | KQB2F07-N01 | 12.7 | 11.2 | 25 | 10.7 | 13.5 | 13.1 | 13 |
| | 1/4 | KQB2F07-N02 | 17.46 | | 30 | 14.1 | | | 27.5 |
| | 3/8 | KQB2F07-N03 | 22.23 | | 31.2 | 14.6 | | | 41.1 |
| $\phi 5/16$ " | 1/8 | KQB2F09-N01 | 14.29 | 13.4 | 27.2 | 10.3 | 16.1 | 26.1 | 18.8 |
| | 1/4 | KQB2F09-N02 | 17.46 | | 32.2 | 14.3 | | | 30.1 |
| | 3/8 | KQB2F09-N03 | 22.23 | | 33.4 | 14.8 | | | 44 |
| $\phi 3/8$ " | 1/4 | KQB2F11-N02 | 17.46 | 16 | 32.1 | 14.4 | 16.6 | 41.5 | 32.9 |
| | 3/8 | KQB2F11-N03 | 22.23 | | 33.3 | 14.9 | | | 47 |
| | 1/2 | KQB2F11-N04 | 23.81 | | 38.6 | 18.6 | | | 50.4 |
| $\phi 1/2$ " | 3/8 | KQB2F13-N03 | 22.23 | 19.3 | 34.6 | 14.7 | 18.5 | 58.3 | 51.3 |
| | 1/2 | KQB2F13-N04 | 23.81 | | 39.9 | 18.8 | | | 55.1 |

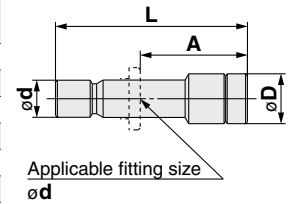


Note 1) ϕD is maximum diameter.
Note 2) Value of FEP tubing.

Plug: KQB2P



| Applicable fitting size ϕd | Model | ϕD | L | A | Weight (g) |
|----------------------------------|----------|----------|------|------|------------|
| $\phi 1/8$ " | KQB2P-01 | 5 | 28.9 | 16.9 | 2.8 |
| $\phi 5/32$ " | KQB2P-03 | 6 | 29.6 | 17 | 4.3 |
| $\phi 1/4$ " | KQB2P-07 | 8 | 30.3 | 16.8 | 9.4 |
| $\phi 5/16$ " | KQB2P-09 | 10 | 33.7 | 17.6 | 16.3 |
| $\phi 3/8$ " | KQB2P-11 | 11 | 34.1 | 17.5 | 22.2 |
| $\phi 1/2$ " | KQB2P-13 | 14 | 36.4 | 17.9 | 40.7 |



Metal One-touch Fittings

Applicable Tubing: Metric Size, Connection Thread: G*

* Conforming to ISO16030

Series KQB2



Spatter Resistant Cylinders
for Arc Welding

Clamp Cylinders

Gas/Air Switching Valve

Detection Switches

Tubing

Fittings

Flow Control Equipment



Applicable Tubing

| | |
|-------------|---------------------------|
| Tubing O.D. | ø4, ø6, ø8, ø10, ø12, ø16 |
|-------------|---------------------------|

Specifications

| | |
|--------------------------------------------------|----------------------------------------------|
| Fluid | Air, Water |
| Operating pressure range ^{Note 1)} | -100 kPa to 1 MPa ^{Note 2)} |
| Proof pressure | 3.0 MPa |
| Ambient and fluid temperature ^{Note 3)} | -5 to 150°C (No freezing) ^{Note 2)} |
| Lubricant | Grease-free specification |
| Seal on the threads | O-ring seal |

Note 1) Avoid using in a vacuum holding application such as a leak tester, since there is leakage.

Note 2) Check the operating pressure range and operating temperature range of the tubing.

Note 3) It is recommended that you use the inner sleeve in the following conditions:

- When using in an environment where the fluid temperature changes drastically.
- When using at a high temperature.

* Temperature Condition of Mounting the Inner Sleeve

| Tubing | Temperature |
|----------------------------|---------------|
| FEP tubing/Series TH | 80°C or more |
| Super PFA tubing/Series TL | 120°C or more |

Spare Parts

| Description | Tubing O.D. | Part no. | Material |
|--------------|-------------|-------------------|---------------------------------------|
| Bulkhead nut | ø4 | KQB223-P01 | C3604 (Electroless nickel plating) |
| | ø6 | KQB206-P01 | |
| | ø8 | KQB208-P01 | |
| | ø10 | KQB210-P01 | |
| | ø12 | KQB212-P01 | |
| | ø16 | KQB216-P01 | |

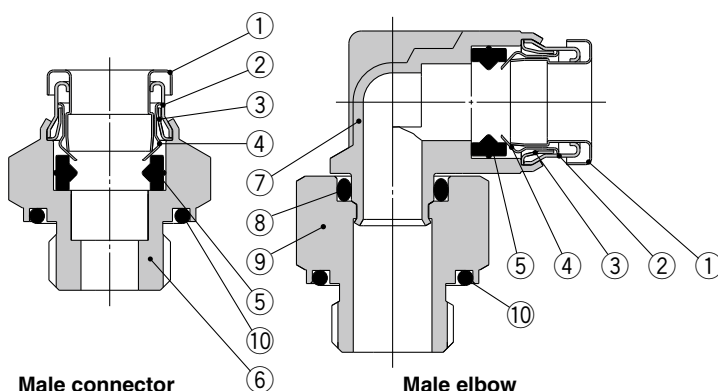
| Description | Thread size | Part no. | Material |
|-----------------|-------------|-----------------|--------------------------------|
| G thread O-ring | G1/8 | KQB2-G01 | Special FKM (Fluoro coated) |
| | G1/4 | KQB2-G02 | |
| | G3/8 | KQB2-G03 | |
| | G1/2 | KQB2-G04 | |

Cross Reference Table of the Inner Sleeve

| Tubing O.D. | Tubing material | | | Applicable inner sleeve | |
|-------------|----------------------------|-----------------|-----------------------|-------------------------|--------|
| | TUS (Soft polyurethane) | TH/THI (FEP) | TL/TIL (Super PFA) | Part no. | Length |
| ø4 | — | TH0402 | — | TJ-0402 | 18 |
| | TUS0425 | TH0425 | — | TJ-0425 | 18 |
| | — | — | TL0403 | TJ-0403 | 18 |
| ø6 | TUS0604 | TH0604 | TL0604 | TJ-0604 | 19 |
| | TUS0805 | — | — | TJ-0805 | 20.5 |
| ø8 | — | TH0806 | TL0806 | TJ-0806 | 20.5 |
| | TUS1065 | — | — | TJ-1065 | 23 |
| | — | TH1075 | — | TJ-1075 | 23 |
| ø10 | — | TH1008 | TL1008 | TJ-1008 | 23 |
| | TUS1208 | — | — | TJ-1008 | 24 |
| | — | TH1209 | — | TJ-1209 | 24 |
| ø12 | — | TH1210 | TL1210 | TJ-1210 | 24 |
| | — | — | — | — | — |

* C2700 + Electroless nickel plating is used for the TJ series.

Construction



Component Parts

| No. | Description | Material |
|-----|---------------------|------------------------------------|
| 1 | Release button | Stainless steel 304 |
| 2 | Guide 1 | Stainless steel 304 |
| 3 | Guide 2 | Stainless steel 304 |
| 4 | Chuck | Stainless steel 304 |
| 5 | Seal | Special FKM (Fluoro coated) |
| 6 | Male connector body | C3604 (Electroless nickel plating) |
| 7 | Male elbow body | Stainless steel 316 |
| 8 | O-ring | Special FKM (Fluoro coated) |
| 9 | Stud | C3604 (Electroless nickel plating) |
| 10 | G thread O-ring | Special FKM (Fluoro coated) |

Series KQB2

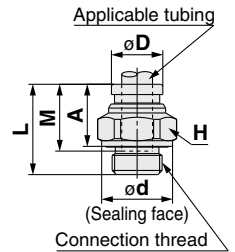
Applicable Tubing: Metric Size, Connection Thread: G

Dimensions

Male Connector: KQB2H



| Applicable tubing O.D. (mm) | Connection thread G | Model | H (Width across flat) | Note 1) ϕD | ϕd | L | A | M | Note 2) Effective area (mm ²) | Weight (g) |
|-----------------------------|---------------------|-------------|-----------------------|------------------|----------|------|------|------|-------------------------------------------|------------|
| $\phi 4$ | 1/8 | KQB2H04-G01 | 14 | 8.7 | 13.8 | 16.6 | 11.1 | 12.6 | 5.6 | 9.2 |
| | 1/4 | KQB2H04-G02 | 19 | | 17.8 | 20.6 | 14.1 | | | 23.6 |
| $\phi 6$ | 1/8 | KQB2H06-G01 | 14 | 11.1 | 13.8 | 17.6 | 12.1 | 13.6 | 13.1 | 8.9 |
| | 1/4 | KQB2H06-G02 | 19 | | 17.8 | 20.5 | 14 | | | 21.6 |
| | 3/8 | KQB2H06-G03 | 22 | | 21.8 | 23.4 | 15.9 | | | 38.3 |
| $\phi 8$ | 1/8 | KQB2H08-G01 | 14 | 13.4 | 13.8 | 23.9 | 18.4 | 16.1 | 26.1 | 13.2 |
| | 1/4 | KQB2H08-G02 | 19 | | 17.8 | 21.2 | 14.7 | | | 19.1 |
| | 3/8 | KQB2H08-G03 | 22 | | 21.8 | 24 | 16.5 | | | 35.2 |
| $\phi 10$ | 1/8 | KQB2H10-G01 | 17 | 16.4 | 13.8 | 25.1 | 19.6 | 17 | 26.1 | 19.9 |
| | 1/4 | KQB2H10-G02 | 19 | | 17.8 | 24.9 | 18.4 | | | 24.8 |
| | 3/8 | KQB2H10-G03 | 22 | | 21.8 | 23.3 | 15.8 | 41.5 | 30.9 | |
| | 1/2 | KQB2H10-G04 | 27 | | 26.5 | 27.7 | 18.7 | 64.4 | | |
| $\phi 12$ | 1/4 | KQB2H12-G02 | 19 | 18.5 | 17.8 | 27.7 | 21.2 | 18.6 | 58.3 | 26.3 |
| | 3/8 | KQB2H12-G03 | 22 | | 21.8 | 23.5 | 16 | | | 25.5 |
| | 1/2 | KQB2H12-G04 | 27 | | 26.5 | 27.9 | 18.9 | | | 58 |
| $\phi 16$ | 3/8 | KQB2H16-G03 | 24 | 24.6 | 21.8 | 31.3 | 23.8 | 20.8 | 81 | 44.5 |
| | 1/2 | KQB2H16-G04 | 27 | | 26.5 | 27.3 | 18.3 | | | 113 |



Note 1) ϕD is maximum diameter.

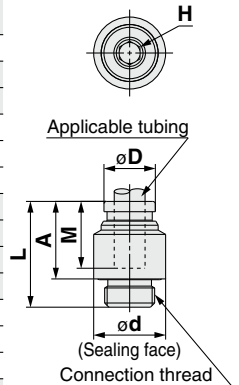
Note 2) Value of FEP tubing.

Value of nylon tubing for $\phi 16$ only.

Hexagon Socket Head Male Connector: KQB2S



| Applicable tubing O.D. (mm) | Connection thread G | Model | H (Width across flat) | Note 1) ϕD | ϕd | L | A | M | Note 2) Effective area (mm ²) | Weight (g) |
|-----------------------------|---------------------|-------------|-----------------------|------------------|----------|------|------|------|-------------------------------------------|------------|
| $\phi 4$ | 1/8 | KQB2S04-G01 | 3 | 14 | 14 | 20.4 | 14.9 | 12.6 | 4.1 | 13.5 |
| $\phi 6$ | 1/8 | KQB2S06-G01 | 4 | 14 | 14 | 20.6 | 15.1 | 13.6 | 10 | 12.1 |
| | 1/4 | KQB2S06-G02 | | 18 | 18 | | 14.1 | | 10.7 | 19.9 |
| $\phi 8$ | 1/8 | KQB2S08-G01 | 5 | 14 | 14 | 23.9 | 18.4 | 16.1 | 17.2 | 12.5 |
| | 1/4 | KQB2S08-G02 | 6 | 18 | 18 | 22.9 | 16.4 | | 23.3 | 20.1 |
| | 3/8 | KQB2S08-G03 | | 22 | 22 | 23.1 | 15.6 | | 31.1 | |
| $\phi 10$ | 1/8 | KQB2S10-G01 | 5 | 17 | 14 | 25.1 | 19.6 | 17 | 17.2 | 18.5 |
| | 1/4 | KQB2S10-G02 | 8 | 18 | 18 | 24.9 | 18.4 | | 39 | 20.4 |
| | 3/8 | KQB2S10-G03 | | 22 | 22 | 16.5 | 31.2 | | | |
| | 1/2 | KQB2S10-G04 | | 27 | 26.5 | 15 | 45.3 | | | |
| $\phi 12$ | 1/4 | KQB2S12-G02 | 8 | 19 | 18 | 27.7 | 21.2 | 18.6 | 46 | 23.6 |
| | 3/8 | KQB2S12-G03 | 10 | 22 | 22 | 24.9 | 17.4 | | 60 | 27.4 |
| | 1/2 | KQB2S12-G04 | | 27 | 26.5 | 15.9 | 42.6 | | | |
| $\phi 16$ | 3/8 | KQB2S16-G03 | 10 | 24.6 | 22 | 31.3 | 23.8 | 20.8 | 81 | 41 |
| | 1/2 | KQB2S16-G04 | 12 | 27 | 26.5 | 27.8 | 18.8 | | 113 | 42.9 |



Note 1) ϕD is maximum diameter.

Note 2) Value of FEP tubing.

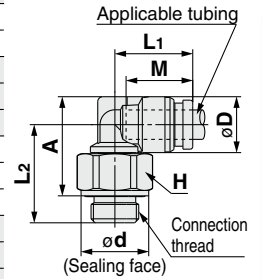
Value of nylon tubing for $\phi 16$ only.

Dimensions

Male Elbow: KQB2L



| Applicable tubing O.D. (mm) | Connection thread G | Model | H (Width across flat) | Note 1) ϕD | ϕd | L1 | L2 | A | M | Note 2) Effective area (mm ²) | Weight (g) |
|-----------------------------|---------------------|-------------|-----------------------|------------------|----------|------|------|------|------|-------------------------------------------|------------|
| $\phi 4$ | 1/8 | KQB2L04-G01 | 14 | 9.1 | 13.8 | 14.4 | 18.9 | 17.9 | 12.6 | 4.2 | 15.6 |
| | 1/4 | KQB2L04-G02 | 19 | | 17.8 | | 22.3 | 20.3 | | | 33 |
| $\phi 6$ | 1/8 | KQB2L06-G01 | 14 | 11.4 | 13.8 | 15.9 | 20 | 20.2 | 13.6 | 11.4 | 17.2 |
| | 1/4 | KQB2L06-G02 | 19 | | 17.8 | | 23.4 | 22.6 | | | 34.6 |
| | 3/8 | KQB2L06-G03 | 22 | | 21.8 | | 25.9 | 24.1 | | | 54.5 |
| $\phi 8$ | 1/8 | KQB2L08-G01 | 14 | 13.7 | 13.8 | 18.6 | 21.3 | 22.6 | 16.1 | 21.6 | 20.2 |
| | 1/4 | KQB2L08-G02 | 19 | | 17.8 | | 24.7 | 25 | | | 36 |
| | 3/8 | KQB2L08-G03 | 22 | | 21.8 | | 27.2 | 26.5 | | | 55.6 |
| $\phi 10$ | 1/8 | KQB2L10-G01 | 14 | 16.6 | 13.8 | 20 | 22.7 | 25.5 | 17 | 21.6 | 25.7 |
| | 1/4 | KQB2L10-G02 | 19 | | 17.8 | | 26.1 | 27.9 | | | 38.2 |
| | 3/8 | KQB2L10-G03 | 22 | | 21.8 | | 28.6 | 29.4 | | 56.2 | |
| | 1/2 | KQB2L10-G04 | 27 | | 26.5 | | 32.6 | 31.9 | | 97.9 | |
| $\phi 12$ | 1/4 | KQB2L12-G02 | 19 | 18.7 | 17.8 | 22.6 | 27.2 | 30 | 18.6 | 50.2 | 41.9 |
| | 3/8 | KQB2L12-G03 | 22 | | 21.8 | | 29.6 | 31.4 | | | 54.3 |
| | 1/2 | KQB2L12-G04 | 27 | | 26.5 | | 33.6 | 33.9 | | | 94.6 |
| $\phi 16$ | 3/8 | KQB2L16-G03 | 22 | 24.6 | 21.8 | 26.3 | 32.4 | 36.5 | 20.8 | 71 | 64.7 |
| | 1/2 | KQB2L16-G04 | 27 | | 26.5 | | 27.3 | 36.4 | | | 39 |

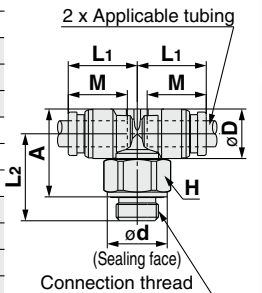


Note 1) ϕD is maximum diameter.
 Note 2) Value of FEP tubing.
 Value of nylon tubing for $\phi 16$ only.

Male Branch Tee: KQB2T



| Applicable tubing O.D. (mm) | Connection thread G | Model | H (Width across flat) | Note 1) ϕD | ϕd | L1 | L2 | A | M | Note 2) Effective area (mm ²) | Weight (g) |
|-----------------------------|---------------------|-------------|-----------------------|------------------|----------|------|------|------|------|-------------------------------------------|------------|
| $\phi 4$ | 1/8 | KQB2T04-G01 | 14 | 9.1 | 13.8 | 14.4 | 18.9 | 17.9 | 12.6 | 6 | 17.5 |
| | 1/4 | KQB2T04-G02 | 19 | | 17.8 | | 22.3 | 20.3 | | | 34.9 |
| $\phi 6$ | 1/8 | KQB2T06-G01 | 14 | 11.4 | 13.8 | 15.9 | 20 | 20.2 | 13.6 | 13.9 | 21 |
| | 1/4 | KQB2T06-G02 | 19 | | 17.8 | | 23.4 | 22.6 | | | 38 |
| | 3/8 | KQB2T06-G03 | 22 | | 21.8 | | 25.9 | 24.1 | | | 57.9 |
| $\phi 8$ | 1/8 | KQB2T08-G01 | 14 | 13.7 | 13.8 | 18.6 | 21.3 | 22.6 | 16.1 | 26.3 | 25.6 |
| | 1/4 | KQB2T08-G02 | 19 | | 17.8 | | 24.7 | 25 | | | 41.2 |
| | 3/8 | KQB2T08-G03 | 22 | | 21.8 | | 27.2 | 26.5 | | | 60.8 |
| $\phi 10$ | 1/8 | KQB2T10-G01 | 14 | 16.6 | 13.8 | 20 | 22.7 | 25.5 | 17 | 40.8 | 34 |
| | 1/4 | KQB2T10-G02 | 19 | | 17.8 | | 26.1 | 27.9 | | | 46 |
| | 3/8 | KQB2T10-G03 | 22 | | 21.8 | | 28.6 | 29.4 | | | 64 |
| | 1/2 | KQB2T10-G04 | 27 | | 26.5 | | 32.6 | 31.9 | | | 105.8 |
| $\phi 12$ | 1/4 | KQB2T12-G02 | 19 | 18.7 | 17.8 | 22.6 | 27.2 | 30 | 18.6 | 57.2 | 53 |
| | 3/8 | KQB2T12-G03 | 22 | | 21.8 | | 29.6 | 31.4 | | | 54.3 |
| | 1/2 | KQB2T12-G04 | 27 | | 26.5 | | 33.6 | 33.9 | | | 105 |
| $\phi 16$ | 3/8 | KQB2T16-G03 | 22 | 24.6 | 21.8 | 26.3 | 32.4 | 36.5 | 20.8 | 71 | 82.2 |
| | 1/2 | KQB2T16-G04 | 27 | | 26.5 | | 27.3 | 36.4 | | | 39 |



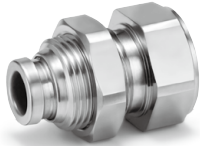
Note 1) ϕD is maximum diameter.
 Note 2) Value of FEP tubing.
 Value of nylon tubing for $\phi 16$ only.

Series KQB2

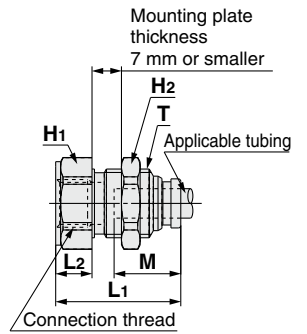
Applicable Tubing: Metric Size, Connection Thread: G

Dimensions

Bulkhead Connector: KQB2E



| Applicable tubing O.D. (mm) | Connection thread G | Model | T (M) | Width across flat | | L1 | L2 | Mounting hole | M | Note) Effective area (mm ²) | Weight (g) |
|-----------------------------|---------------------|-------------|---------|-------------------|------|------|------|---------------|------|-----------------------------------------|------------|
| | | | | H1 | H2 | | | | | | |
| ø4 | 1/8 | KQB2E04-G01 | M10 x 1 | 17 | 12 | 27.1 | 11 | 11 | 12.6 | 5.6 | 25.1 |
| | 1/4 | KQB2E04-G02 | | 19 | | 32.7 | 16.6 | | | | 36.9 |
| ø6 | 1/8 | KQB2E06-G01 | M14 x 1 | 17 | | 25.5 | 7.4 | 15 | 13.6 | 13.1 | 26.8 |
| | 1/4 | KQB2E06-G02 | | 19 | 17 | 33.5 | 15.4 | | | | 42.7 |
| ø6 | 3/8 | KQB2E06-G03 | | 24 | | 35 | 16.9 | | | | 62 |
| | 1/8 | KQB2E08-G01 | M15 x 1 | 17 | | 27.6 | 8.2 | 16 | 16.1 | 26.1 | 30.4 |
| 1/4 | KQB2E08-G02 | 19 | | 19 | 34.5 | 15.1 | 43.9 | | | | |
| ø8 | 3/8 | KQB2E08-G03 | | 24 | | 36 | 16.6 | | | | 66.2 |
| | 1/4 | KQB2E10-G02 | M18 x 1 | 19 | 21 | 33.5 | 13.5 | 19 | 17 | 41.5 | 46.8 |
| 3/8 | KQB2E10-G03 | 24 | | | 35.6 | 15.6 | 65.4 | | | | |
| ø12 | 3/8 | KQB2E12-G03 | M20 x 1 | 24 | 24 | 35.9 | 14.7 | 21 | 18.6 | 58.3 | 119.2 |
| | 1/2 | KQB2E12-G04 | | 27 | | 42.2 | 21 | | | | 91.9 |
| ø16 | 3/8 | KQB2E16-G03 | M27 x 1 | 29 | 30 | 37.2 | 13.1 | 28 | 20.8 | 96 | 118.2 |
| | 1/2 | KQB2E16-G04 | | | | 43.1 | 19 | | | | 128.7 |

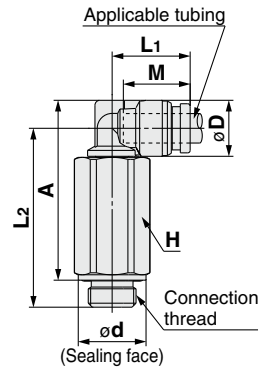


Note) Value of FEP tubing.
Value of nylon tubing for ø16 only.

Extended Male Union: KQB2W

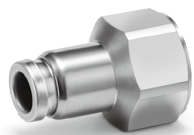


| Applicable tubing O.D. (mm) | Connection thread G | Model | H (Width across flat) | Note 1) øD | ød | L1 | L2 | A | M | Note 2) Effective area (mm ²) | Weight (g) |
|-----------------------------|---------------------|-------------|-----------------------|------------|------|------|------|-------|------|-------------------------------------------|------------|
| | | | | | | | | | | | |
| 1/4 | KQB2W04-G02 | 19 | 17.8 | | 38.7 | 36.7 | 70.6 | | | | |
| ø6 | 1/8 | KQB2W06-G01 | 14 | 11.4 | 13.8 | | 36.4 | 36.6 | 13.6 | 10.9 | 36.1 |
| | 1/4 | KQB2W06-G02 | 19 | | 17.8 | 15.9 | 39.8 | 39 | | | 72.2 |
| ø6 | 3/8 | KQB2W06-G03 | 22 | | 21.8 | | 42.3 | 40.5 | | | 106.7 |
| | 1/8 | KQB2W08-G01 | 14 | 13.7 | 13.8 | 18.6 | 40 | 41.3 | 16.1 | 20.5 | 41.3 |
| 1/4 | KQB2W08-G02 | 19 | 17.8 | | 19.1 | 43.4 | 43.7 | 76.7 | | | |
| ø8 | 3/8 | KQB2W08-G03 | 22 | | 21.8 | | 45.9 | 45.2 | | | 112.9 |
| | 1/4 | KQB2W10-G02 | 19 | 16.6 | 17.8 | | 49.8 | 51.6 | 17 | 33.5 | 84.8 |
| 3/8 | KQB2W10-G03 | 22 | 21.8 | | 21 | 50.2 | 51 | 116.6 | | | |
| ø10 | 1/2 | KQB2W10-G04 | 27 | | 26.5 | | 54.2 | 53.5 | | | 196.6 |
| | 1/4 | KQB2W12-G02 | 19 | 18.7 | 17.8 | 22.6 | 50.9 | 53.7 | 18.6 | 47.7 | 88.7 |
| 3/8 | KQB2W12-G03 | 22 | 21.8 | | 23.6 | 53.3 | 55.1 | 111.6 | | | |
| ø12 | 1/2 | KQB2W12-G04 | 27 | | 26.5 | | 57.3 | 57.6 | | | 193.8 |
| | 3/8 | KQB2W16-G03 | 22 | 24.6 | 21.8 | 26.3 | 62 | 66.1 | 20.8 | 71 | 133.6 |
| 1/2 | KQB2W16-G04 | 27 | 26.5 | | 27.3 | 66 | 68.6 | 201.6 | | | |

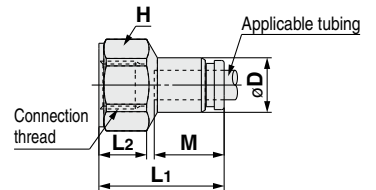


Note 1) øD is maximum diameter.
Note 2) Value of FEP tubing.
Value of nylon tubing for ø16 only.

Female Connector: KQB2F



| Applicable tubing O.D. (mm) | Connection thread G | Model | H (Width across flat) | Note 1) øD | L1 | L2 | M | Note 2) Effective area (mm ²) | Weight (g) |
|-----------------------------|---------------------|-------------|-----------------------|------------|------|------|------|-------------------------------------------|------------|
| | | | | | | | | | |
| 1/4 | KQB2F04-G02 | 19 | 30.6 | 14.5 | 32 | | | | |
| ø6 | 1/8 | KQB2F06-G01 | 17 | 11.1 | 25.5 | 9.7 | 13.6 | 13.1 | 22.6 |
| | 1/4 | KQB2F06-G02 | 19 | | 31.1 | 14.7 | | | 33 |
| ø6 | 3/8 | KQB2F06-G03 | 24 | | 32.6 | 14.6 | | | 51.1 |
| | 1/8 | KQB2F08-G01 | 17 | 13.4 | 27.6 | 10 | 16.1 | 26.1 | 25.1 |
| 1/4 | KQB2F08-G02 | 19 | 33.2 | | 14.9 | 36.3 | | | |
| ø8 | 3/8 | KQB2F08-G03 | 24 | | 34.6 | 14.7 | | | 53.8 |
| | 1/4 | KQB2F10-G02 | 19 | 16.4 | 33.5 | 15.2 | 17 | 41.5 | 39.9 |
| 3/8 | KQB2F10-G03 | 24 | 34.9 | | 15 | 57.7 | | | |
| ø10 | 1/4 | KQB2F12-G02 | 19 | 18.5 | 34.5 | 15.2 | 18.6 | 58.3 | 41.8 |
| | 3/8 | KQB2F12-G03 | 24 | | 35.9 | 15 | | | 59.7 |
| ø12 | 1/2 | KQB2F12-G04 | 27 | | 41.8 | 19.9 | | | 81.6 |
| | 3/8 | KQB2F16-G03 | 24 | 24.6 | 37.2 | 15.4 | 20.8 | 81 | 66.6 |
| 1/2 | KQB2F16-G04 | 27 | 43.1 | | 20.4 | 89.1 | | | |



Note 1) øD is maximum diameter.
Note 2) Value of FEP tubing.
Value of nylon tubing for ø16 only.