

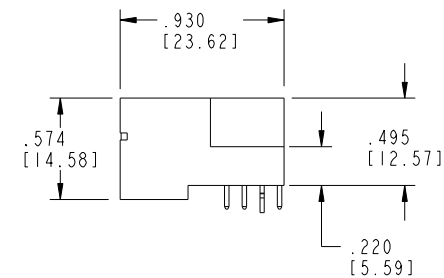
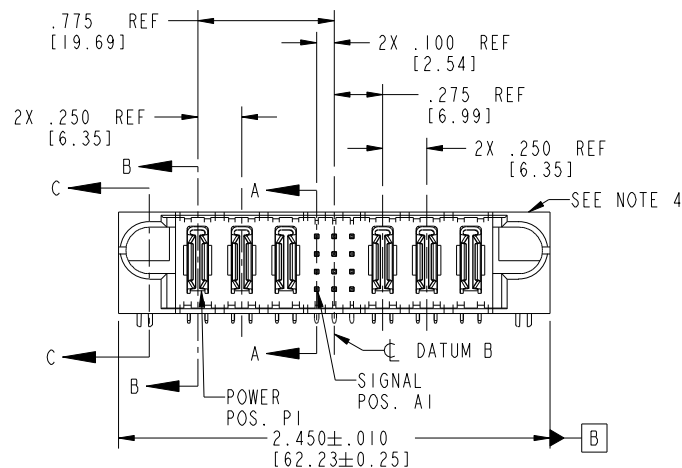


All rights strictly reserved. Reproduction or issue to third parties in any form whatever is not permitted without written authority from the proprietor. Property of FCI. Copyright FCI.

Tous droits strictement réservés. Reproduction ou communication à des tiers interdite sous quelque forme que ce soit sans autorisation écrite du propriétaire. Propriété de c FCI. Droits de reproduction FCI.

CODE	DIM "M" MATING LENGTH	CONTACT TYPE
U	.270 [6.86]	SIGNAL
T	.270 [6.86]	SIGNAL
S	.270 [6.86]	SIGNAL
R	.270 [6.86]	SIGNAL
PA	N/A [N/A]	POWER
HA	N/A [N/A]	HOLD-DOWN
E	.220 [5.59]	SIGNAL

PRODUCT NO.	ROWS	POWER				SIG.			POWER			E2
		E1	P1	P2	P3	1	2	3	P4	P5	P6	
51730-079-- NOTE: 3	D C B A											



mat'l code				SEE NOTE 2		tolerances unless otherwise specified		CUSTOMER		FCI		www.fciconnect.com	
litr	ecn no.	dr	date					COPY					
A	V03-0683	MEM	6/18/03	linear		.XX±.01/0.X±0.3		projection		title	3P + 12S + 3P		
B	DG05-0300	GuoJM	08/26/05			.XXX±.005/0.XX±0.13					RIGHT ANGLE SOLDER HEADER		
C	DG05-0560	CS	12/26/05	angles		.XXX±.0020/0.XXX±0.051				product family	PwrBlade	code	213
D	DG08-0253	SH	09/13/08	dr	M. MOSTOLLER	6/18/03		INCH/MM		size	dwg no	sheet	1 of 4
				enrg	M. MOSTOLLER	6/18/03		scale		A	51730-079		
				chr	H. BREWBAKER	6/18/03		1:1					
				appd	M. MOSTOLLER	6/18/03							
sheet index	revision sheet	D	D	D	D								
		1	2	3	4								

Pro/E

cage code 22526



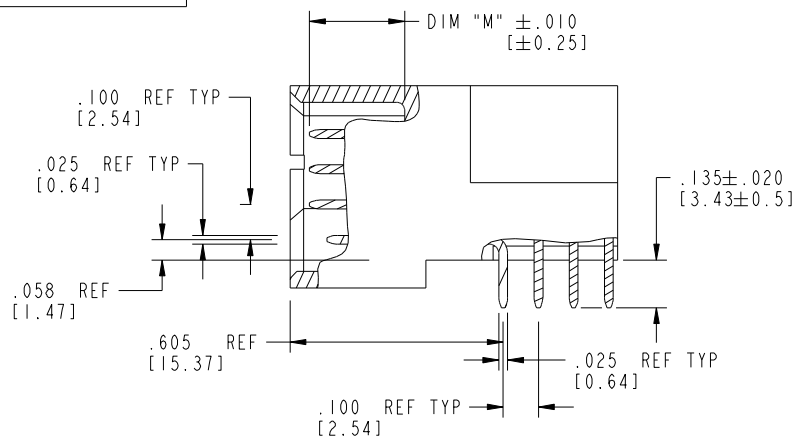
All rights strictly reserved. Reproduction or issue to third parties in any form whatever is not permitted without written authority from the proprietor. Property of FCI. Copyright FCI.

Tous droits strictement réservés. Reproduction ou communication à des tiers interdite sous quelque forme que ce soit sans autorisation écrite du propriétaire. Propriété de c FCI. Droits de reproduction FCI.

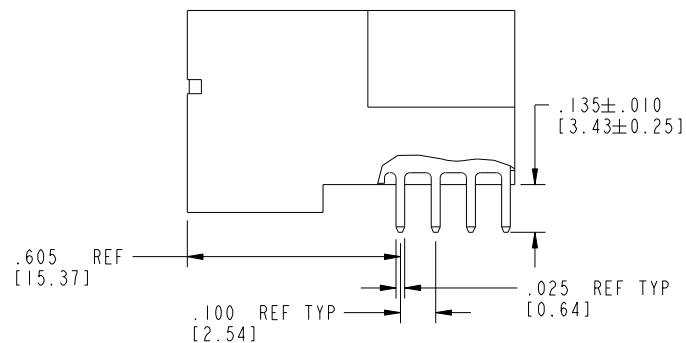
B

A

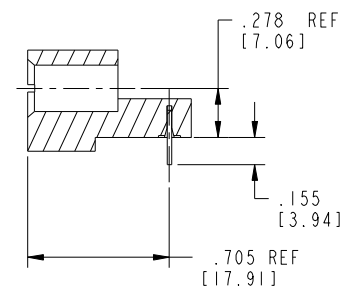
PRODUCT NUMBER
51730-079--
NOTE: 3




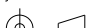
BROKEN-OUT SECTION A-A
SCALE 2:1



BROKEN-OUT SECTION B-B
SCALE 2:1



SECTION C-C

mat'l code				SEE NOTE 2				tolerances unless otherwise specified				CUSTOMER				 www.fciconnect.com				
litr		ecr no.		dr		date		linear	$.XX \pm .01 / 0.X \pm 0.3$				COPY							
D									$.XXX \pm .005 / 0.XX \pm 0.13$				title							
									$.XXX \pm .0020 / 0.XXX \pm 0.051$				3P + 12S + 3P							
								angles	$0^\circ \pm 2^\circ$				RIGHT ANGLE SOLDER HEADER							
								dr	M. MOSTOLLER		6/18/03		INCH/MM		product family		PwrBlade		code	
								engr	M. MOSTOLLER		6/18/03		scale		size		dwg no		213	
								chr	H. BREWBAKER		6/18/03		1:1		A		51730-079		sheet	
								appd	M. MOSTOLLER		6/18/03								2 of 4	
sheet index		revision sheet																		

B

1 | 2

Pro/E

3 |

cage code 22526

4

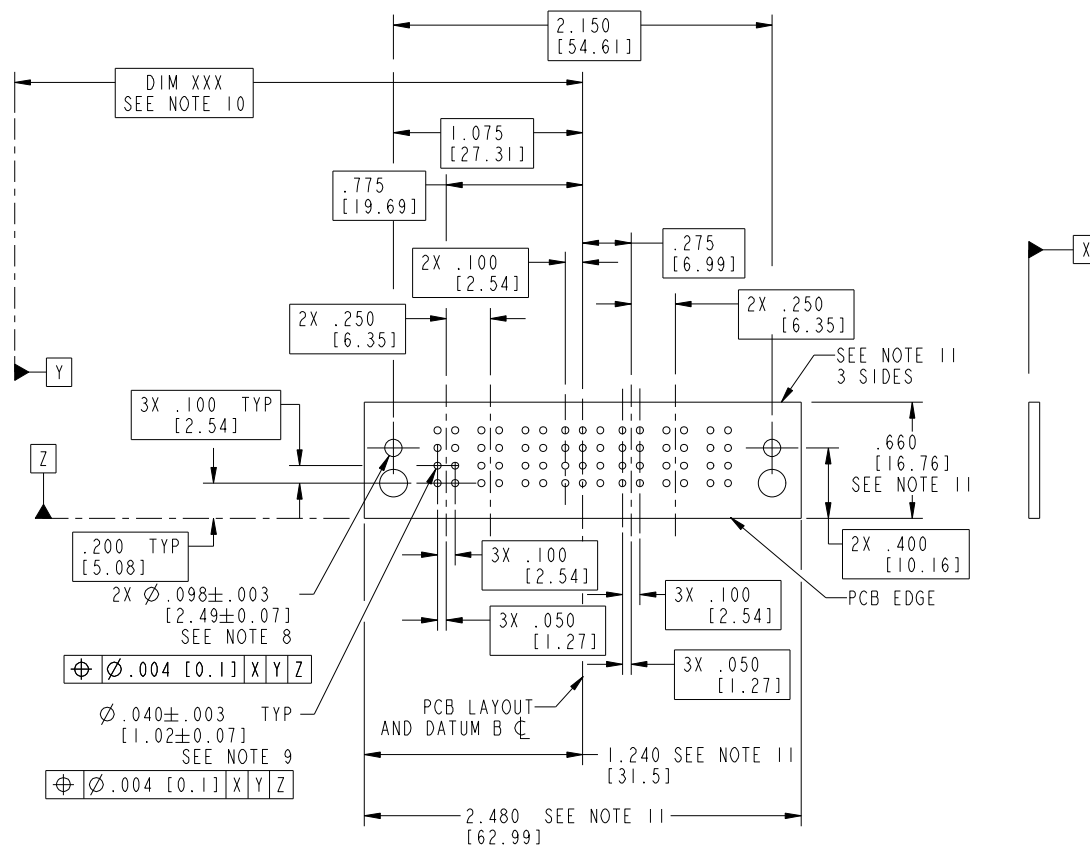
A

B

1 | 2

3

4



RECOMMENDED PCB LAYOUT

[illegible]

coge code	22526
-----------	-------

1	2
---	---

Pro/E

3

4

Tous droits strictement reserves. Reproduction ou communication a des tiers interdite sous quelque forme que ce soit sans autorisation écrite du propriétaire.
Propriete de c FCI. Droits de reproduction FCI.

A



All rights strictly reserved. Reproduction or issue to third parties in any form whatever is not permitted without written authority from the proprietor.
Property of FCI. Copyright FCI.

B

1 | 2

3 |

4

PRODUCT NUMBER
51730-079--
NOTE: 3

NOTES:

1. DIMENSIONS AND TOLERANCES ARE IN ACCORDANCE WITH
ASME Y14.5M, 1994 UNLESS OTHERWISE SPECIFIED.

CONNECTOR NOTES:

2. HOUSING MATERIAL: UL 94 V-0 GLASS FILLED
HIGH-TEMP THERMOPLASTIC
POWER CONTACT MATERIAL: COPPER ALLOY
SIGNAL PIN MATERIAL: COPPER ALLOY

3. PLATING:
SEE ITEM 1 & 2 IN PRINT 10064183 FOR PLATING SPEC OF 51730-079 AND 51730-079LF RESPECTIVELY

4. MANUFACTURER'S NAME, P/N, AND DATE CODE TO APPEAR ON
THIS SURFACE.

5. PRODUCT SPECIFICATION GS-12-149.
APPLICATION SPECIFICATION BUS-20-067.

6. PACKAGED IN TRAYS.

PCB NOTES:

7. ALL HOLE DIAMETERS ARE FINISHED HOLE SIZE.

8. MOUNTING HOLES, WHERE APPLICABLE, ARE UNPLATED.

9. $\varnothing .0453 \pm .0010$ [1.151 \pm 0.025] DRILLED HOLES PLATED WITH
.0003 [0.008] MIN SnPb OVER .001 [0.03]
TO .003 [0.08] Cu PLATING TO ACHIEVE
 $\varnothing .040 \pm .003$ [1.02 \pm .07] HOLE.

10. "DIM XXX" TO BE DETERMINED BY THE CUSTOMER.

11. CONNECTOR KEEP-OUT ZONE.

12: A SYMBOL WILL BE NEXT TO ANY DIMENSION, VIEW,
OR NOTE WHICH HAS BEEN MODIFIED WITH CURRENT
DRAWING VERSION.

mat'l code				SEE NOTE 2		tolerances unless otherwise specified		CUSTOMER		FCI		www.fciconnect.com	
litr	ecn no.	dr	date	linear	projection	INCH/MM	scale	product family	PwrBlade	code	size	dwg no	sheet
D													
				angles									
				dr	M. MOSTOLLER	6/18/03							
				enrg	M. MOSTOLLER	6/18/03							
				chr	H. BREWBAKER	6/18/03							
				appd	M. MOSTOLLER	6/18/03							
sheet index	revision sheet												

A

B

1 | 2

Pro/E

3 |

cage code 22526

4

Mouser Electronics

Authorized Distributor

Click to View Pricing, Inventory, Delivery & Lifecycle Information:

[FCI / Amphenol:](#)

[51730-079](#)