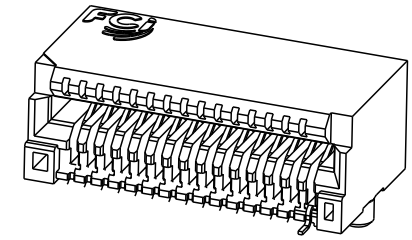
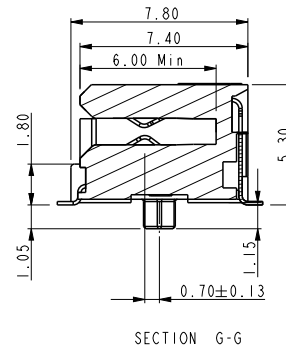
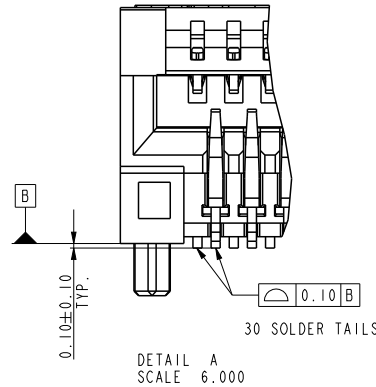
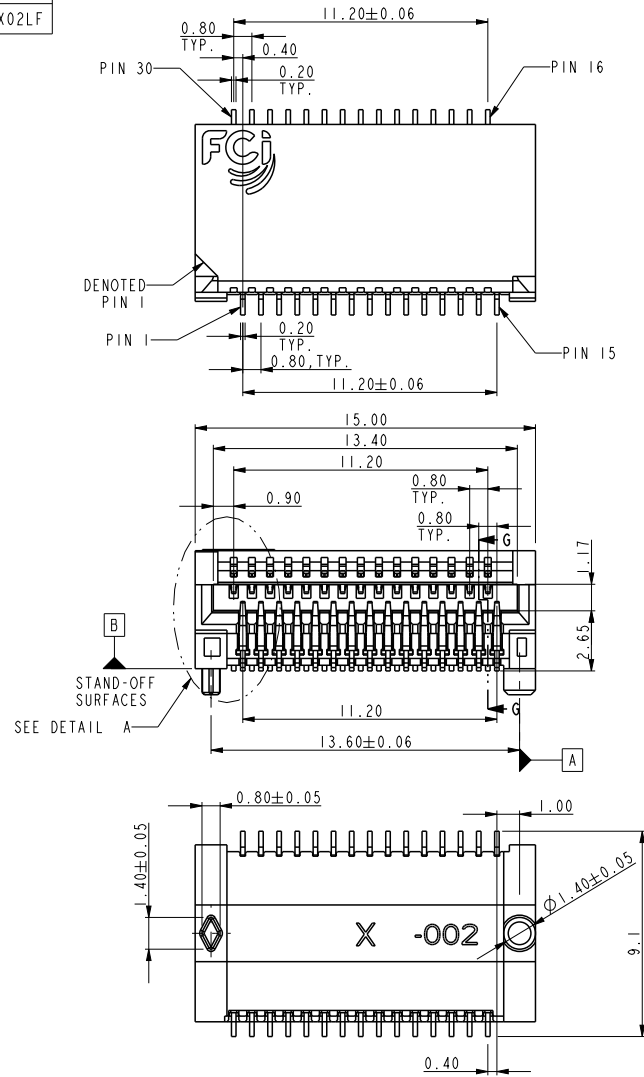


PRODUCT NO
10084423-X02LF



SCALE 3.000

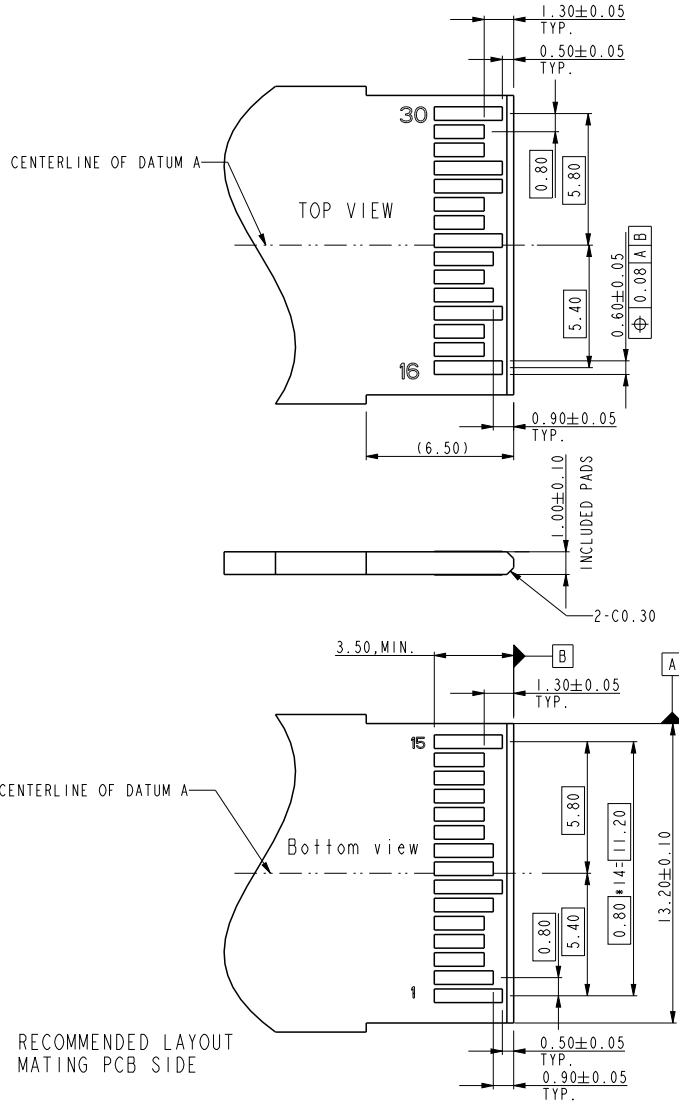
- NOTE:
- Material:
 - HOUSING: HIGH TEMPERATURE LCP, BLACK UL 94 V-0 FLAME RETARDANT.
 - TERMINAL: NICKEL COPPER ALLOY.
 - PLATING SPEC AS BELOW:
 - FOR CONTACT AREA:
 - 102LF FOR 0.76 MICROMETERS MIN. THICKNESS GOLD.
 - 202LF FOR 0.38 MICROMETERS MIN. THICKNESS GOLD
 - 902LF FOR 0.76 MICROMETERS MIN. THICKNESS GXT
 - FOR SOLDER AREA:
 - MATTE PURE TIN 3 MICROMETERS MIN.
 - FOR UNDERPLATING:
 - 2.54 MICROMETERS MIN. THICKNESS NICKEL
 - PACKING SPEC. GS-14-1030.
 - PRODUCT SPEC. GS-12-557.
 - PART NUMBER SCHEME: (EX. 10084423-X02LF), PLEASE FIND THE PAGE 2 FOR OPTIONS.
 - LEAD FREE NOTES:
 - 5a. THE HOUSING WILL WITHSTAND EXPOSURE TO 260° C PEAK TEMPERATURE FOR 10 SECONDS IN A CONVECTION, INFRA-RED OR VAPOR PHASE REFLOW OVEN.
 - 5b. THIS PRODUCT MEETS EUROPEAN UNION DIRECTIVES AND OTHER COUNTRY REGULATIONS AS DESCRIBED IN GS-22-008.
 - THIS CONNECTOR IS DESIGNED TO WORK WITH RAIL SYSTEM THAT ALLOW THE MODULE TO "FLOAT" IN THE VERTICAL PLANE AND FIND EQUILIBRIUM BETWEEN THE UPPER AND LOWER CONTACT ROWS. THIS CONNECTOR WILL NOT PERFORM PROPERLY IF USED IN SYSTEMS THAT MECHANICALLY BIAS THE MODULE IN THE VERTICAL PLANE SUCH AS RAIL SYSTEMS WITH EMI SPRINGS.



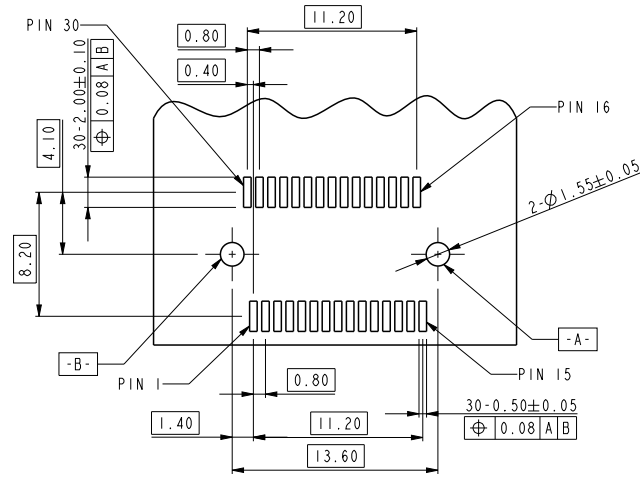
Copyright FCI.

spec ref	*	dr	Junon Huang	2009/04/21	projection	MM	size	A4	scale	1.000		
tolerance std	TOLERANCES UNLESS OTHERWISE SPECIFIED	eng	De-Feng, Qin	2012/03/22			ecn no	ELX-DG-010777-1				
ISO 406		chr	Terry Qiu	2012/03/26				rel level	Released			
ISO 1101		appr	Pei-Ming Zheng	2012/03/26					product family	title ASSEMBLY OF STANDARD TYPE, 30 POS. RIGHT ANGLE TYPE. EDGE CARD CONNECTOR	dwg no 10084423-102	rev F
surface				cat. no.								
ISO 1302	linear	0.X ± 0.25	www.fci.com									
		0.XX ± 0.13										
		0.XXX ± 0.05										
	angular	0° ± 3°										

PRODUCT NO
10084423-X02LF



PART NUMBER	TERMINALS (Contact plating options)	TERMINALS (Underplating and Solder tail plating)	REMARK
10084423-102LF	0.76um, Min. Gold	Underplating: 2.54um Min. Nickel overall. Solder tail: 3um Min. Matte Tin.	
10084423-202LF	0.38um Min. Gold	Underplating: 2.54um Min. Nickel overall. Solder tail: 3um Min. Matte Tin.	
10084423-902LF	0.76um, Min. GXT	Underplating: 2.54um Min. Nickel overall. Solder tail: 3um Min. Matte Tin.	



spec ref	*	dr	Junon Huang	2009/04/21	projection	MM	size	A4	scale	3.000
tolerance std ISO 406 ISO 1101	TOLERANCES UNLESS OTHERWISE SPECIFIED	eng	De-Feng, Qin	2012/03/22			ecn no	ELX-DG-010777-1		
surface ✓	linear	chr	Terry Qiu	2012/03/26				rel level	Released	
ISO 1302	angular	appr	Pei-Ming Zheng	2012/03/26	product family					
	0.X ± 0.25			title ASSEMBLY OF STANDARD TYPE, 30 POS. RIGHT ANGLE TYPE. EDGE CARD CONNECTOR	product family	rev F	dwg no 10084423-102	sheet 2 of 2		
	0.XX ± 0.13							Product - Customer Drw		
	0.XXX ± 0.05							sheet 2 of 2		
	0° ± 3°	cat. no.		Product - Customer Drw		sheet 2 of 2				



Copyright FCI.

Mouser Electronics

Authorized Distributor

Click to View Pricing, Inventory, Delivery & Lifecycle Information:

[FCI / Amphenol:](#)

[10084423-102LF](#)