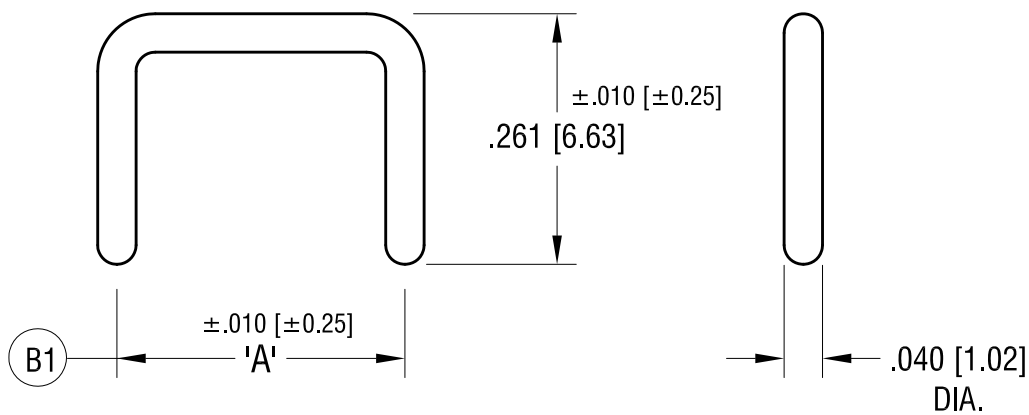


THIS DOCUMENT IS THE PROPERTY OF
KEYSTONE ELECTRONICS CORP. AND
SHALL NOT BE REPRODUCED, DISTRIBUTED
OR USED AS A BASIS FOR MANUFACTURE
WITHOUT PRIOR WRITTEN PERMISSION
FROM KEYSTONE ELECTRONICS CORP.

ACTUAL SIZE
P/N 1430-2



PART NO.	±.010 [±0.25] 'A' MTG. CTRS
1430-1	.200 [5.08]
1430-2	.250 [6.35]
1430-3	.300 [7.62]
1430-4	.400 [10.16]
1430-5	.500 [12.70]

DATE	DESCRIPTION	REV.
8.09.23	(B1) TOLERANCE WAS ±.005 CHANGE AS PER ECN 23-135	B
12.05.13	C/M SPLIT TO 'C' & 'M' CHANGE AS PER ECN 13-108	A

KEYSTONE ELECTRONICS CORP.			
www.keyelco.com • NEW HYDE PARK NY 11040 • Tel (516)328-7500			
PART NAME NON-INSULATED SHORTING PIN			
MATERIAL .040 [1.02] DIA. BRASS			
FINISH GOLD PLATE		DRN BY BOONE	DATE 7.02.07
		APP'D MR	SCALE 5X
TOLERANCES DECIMAL ANGULAR UNLESS OTHERWISE SPECIFIED	INCH [MM] ±.005 [±0.13] ± 1°	CODE C	DWG NO. 1430-