

MQ9324ET120
Isolated 36~75V input, 1/8-brick, 12V/240W output DC-DC Converter



FEATURES

- Wide operating voltage: 36~75V
- Tightly regulated single output:
 - ✓ 12V/20A
- Output power up to 240W
- High Efficiency 94.3% (48V Vin, 12V Vout, Full load)
- Constant switching frequency
- Remote sense
- Output over-current / short-circuit protection
- Output over-voltage protection
- Over-temperature protection
- Input under-voltage Protection
- ON/OFF control polarity selectable
 - ✓ Negative: R/C connect Vin- for normal operation
 - ✓ Positive: R/C floating or High Level for normal operation
- Industry standard footprint
 - ✓ 58.4mm x 22.9mmx9.6mm
 - ✓ 2.3 in x 0.9 in x 0.38 in
- Monotonic start-up
- Wide Operating Temperature: -40°C~+85°C

APPLICATIONS

- Industrial Equipment
- Surveillance
- Wireless Networks
- Distribute Power Architecture

Description

The MQ9324ET120 Series Power Modules are isolated single output dc-dc converter that operates over a wide input voltage range of 36V_{dc} to 75V_{dc} and provide a precisely (1%) regulated 12V dc output in standard 1/8-brick size. The module provides 12V_{dc} nominal output voltage rated for 20A_{dc} output current, achieves 94.3% high efficiency at 48V_{dc} input voltage application. Standard features include remote On/Off, remote sense, output voltage adjustment, overvoltage, over-current and over temperature protection.

***** **Typical Application Circuit** *****



Note:

C_{IN}: 100µF/100V Electrolytic input cap
C_{OUT}: 220µF/25V Solid output cap +1206-106/25V Ceramic capacitors

Performance Specifications(at T_A=+25°C)

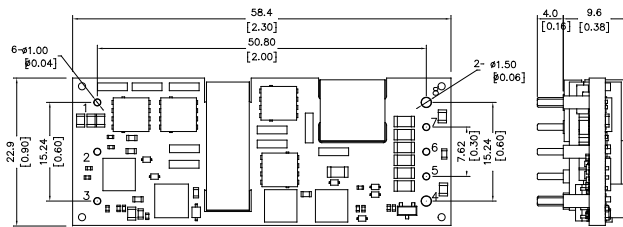
Model	Input V _{IN} Range (V)	Output				Efficiency (%)
		P _{OUT} (W)	V _O (V)	Regulation		
				Line (%)	Load (%)	
MQ9324ET120	36~75	240	12	0.2	0.2	94.3

Mechanical Outline Diagram

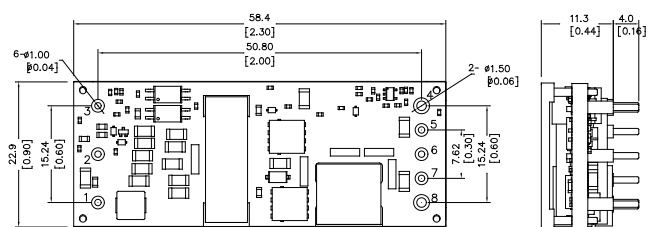
Unit: millimeters and [inches]

Tolerances: x.x ±0.5mm [x.xx in. ±0.02in.], x.xx ±0.25mm [x.xxx in. ±0.010 in.], unless otherwise noted

PIN	1	2	3	4	5	6	7	8
Description	Vin+	R/C: Remote Control	Vin-	Vo-	Sense-	Trim	Sense+	Vo+



TOP View
MQ9324ETXXX-X



BOT View
MQ9324ETXXX-X-TP

Ordering Information:

MQ9324ET120-N-TP

MQ93 isolated DC/DC series:
 3:36~75V input
 24:240W output power
 E:Eighth Brick Size
 T: Through Hole
 S: Surface Mount

TP: With Thermal Plate
 N: Negative logic
 P: Positive logic
 Output Voltage:
 120:12V

Absolute Maximum Ratings

Note: These are stress ratings. Exposure of devices to any of these conditions may adversely affect long-term reliability. Proper operation under conditions other than those listed in the Performance Specifications Table is not implied.

Parameter	Symbol	Min	Max	Unit
Input Voltage	V_{IN}	-0.3	100V(100mS)	V
Operating Ambient Temperature	T_A	-40	85	°C
Storage Temperature	T_{STG}	-55	125	°C
Altitude			4000	m
I/O Isolation voltage (100% factory Hi-pot tested)			2250	Vdc

MQ9324ET120 General Specifications:

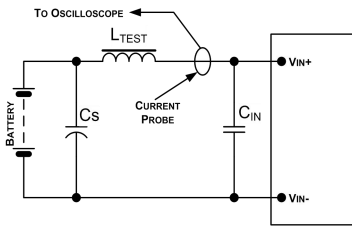
Note: Unless otherwise indicated, specifications apply over all operating input voltage, resistive load, and temperature conditions.

Parameter	Condition	Symbol	Min	Typ	Max	Unit
Operating range		$V_{IN,OP}$	36	48	75	V
Maximum input current	$V_{IN}=V_{IN,MIN}$ to $V_{IN,MAX}$, $V_O=V_{O,SET}$, $I_O=I_{O,MAX}$	$I_{IN,MAX}$		20		A
Input No Load Current	$V_{IN}=48V$, $V_O=V_{O,SET}$, $I_O=0$, module enabled	$I_{IN,NoLoad}$		53		mA
Input Standby Current	$V_{IN}=48V$, module disabled			1.5		mA
Inrush Transient		I^2t			0.5	A ² S
Input Reflected Ripple Current, Peak-Peak	5Hz to 20MHz, 12 μ H Source impedance, $V_{IN}=V_{IN,MIN}$ to $V_{IN,MAX}$, $V_O=V_{O,SET}$, $I_O=I_{O,MAX}$			80		mA _{p-p}
Input Ripple Rejection	120Hz			60		dB
Input Under-voltage Lockout	Turn on threshold Turn off threshold hysteresis	V_{UVLO}		34.5 29.5 5		Vdc
Turn on Delay	T_{DELAY} = on/off pin transition until $V_O = 10\%$ of $V_{O,SET}$			8		mS
Rise Time	Time for V_O to rise from 10% of $V_{O,SET}$ to 90% of $V_{O,SET}$			22		mS
Switching Frequency		F_{SW}		250		kHz
Isolation Capacitance				1000		pF
Recommended capacitive load				220	6500	μ F
Isolation Resistance			10			M Ω
I/O Isolation Voltage	100% factory Hi-pot tested				2250	Vdc
MTBF			1,000,000			Hour
Nominal Output Voltage Set-point	$V_{IN}=48V$, $I_O=I_{O,MAX}$, $T_A=25^\circ C$			12		V
Output Voltage Set point	100% load	ΔV_O	-2		+2	%
Adjustment Range		$V_{O,ADJ}$	10.8		13.2	V
Output Current		I_O	0		20	A
Output Regulation	Line ($V_{IN}=V_{IN,MIN}$ to $V_{IN,MAX}$) Load ($I_O=1\%$ $I_{O,MAX}$ to 100% $I_{O,MAX}$) Temperature ($T_{REF}=T_{A,MIN}$ to $T_{A,MAX}$)				± 0.2 ± 0.2 ± 1.5	% $V_{O,SET}$
Idling output voltage	$I_O=0A$					V
Output Ripple and Noise Voltage	$V_{IN}=48V$, $I_O=I_{O,MAX}$, $T_A=25^\circ C$, Measured with 10 μ F solid cap 1 μ F ceramic pk-pk 5Hz~20MHz bandwidth			80		mVpp
Overcurrent Protection	$V_{IN}=48V$, $I_O=I_{O,MAX}$, $T_A=25^\circ C$	$I_{O,OC}$		26.4	30	A
Efficiency	$V_{IN}=48V$, $I_O=I_{O,MAX}$, $T_A=25^\circ C$			94.3		%
Transient Response	Load step from 50%~100%~50% $I_{O,MAX}$ $C_O=220\mu F$ Al-cap, di/dt=0.1A/ μ S			700		mVpp
	Response time			1		mS

CAUTION: This power module is not internally fused. An input line fuse must always be used.

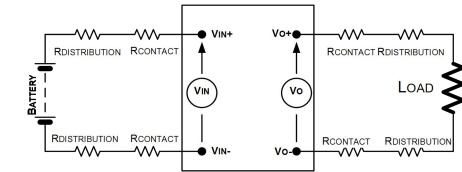
This power module can be used in a wide variety of applications, ranging from simple standalone operation to an integrated part of sophisticated power architectures. To preserve maximum flexibility, internal fusing is not included, however, to achieve maximum safety and system protection, always use an input line fuse. The safety agencies require a fast-acting fuse with a maximum rating of 15 A. Based on the information provided in this data sheet on inrush energy and maximum dc input current, the same type of fuse with a lower rating can be used. Refer to the fuse manufacturer's data sheet for further information.

Test Configurations



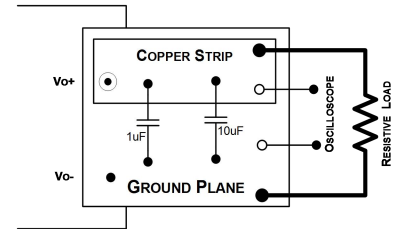
NOTE: Measure input reflected ripple current with a simulated source inductance (LTEST) of 12μH. Capacitor CS offsets possible battery impedance. Measure current as shown above.

Fig 1. Input Reflected Ripple Current Test Setup



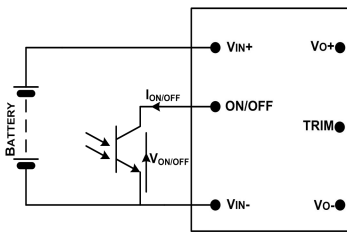
NOTE: All voltage measurements to be taken at the module terminals, as shown above. If sockets are used then Kelvin connections are required at the module terminals to avoid measurement errors due to socket contact resistance.

Fig 2. Output Voltage and Efficiency Test Setup



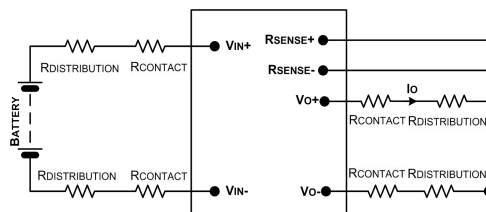
NOTE: All voltage measurements to be taken at the module terminals, as shown above. If sockets are used then Kelvin connections are required at the module terminals to avoid measurement errors due to socket contact resistance.

Fig 3. Output Ripple and Noise Test Setup



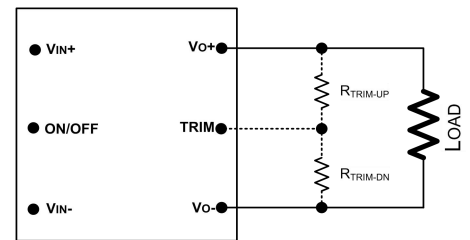
Note: an open collector switch is recommended for remote on/off control, controlling this switch to turn on or off the unit.

Fig 4. Remote On/Off



Note: Remote sense function is used to minimize the effects of distribution losses by regulating the voltage at the remote-sense connections.

Fig 5. Remote Sense



Note: Trimming function is allowed the output voltage set point to be adjusted from the default value in a allowed range.

Fig 6. Output Trim

Input Filtering

The power module should be connected to a low ac-impedance source. Highly inductive source impedance can affect the stability of the power module. For the test configuration in **Fig 1. Input Reflected Ripple Current Test Setup**, a 100μF electrolytic capacitor (ESR<0.7R at 100kHz), mounted close to the power module helps ensure the stability of the unit. Consult the factory for further application guidelines.

Safety Considerations

For safety-agency approval of the system in which the power module is used, the power module must be installed in compliance with the spacing and separation requirements of the end-use safety agency standard, i.e. UL60950-1, CSA C22.2 No.60950-1, and VDE0805-1(IEC60950-1). If the input source is non-SELV (ELV or a hazardous voltage greater than 60Vdc and less than or equal to 75Vdc), for the module's output to be considered as meeting the requirements for safety extra-low voltage (SELV), all of the following must be true:

- ✓ The input source is to be provided with reinforced insulation from any other hazardous voltages, including the ac mains.
- ✓ One VIN pin and one VOUT pin are to be grounded, or both the input and output pins are to be kept floating.
- ✓ The input pins of the module are not operator accessible.

Another SELV reliability test is conducted on the whole system (combination of supply source and subject module), as required by the safety agencies, to verify that under a single fault, hazardous voltages do not appear at the module's output.

Note: Do not ground either of the input pins of the module without grounding one of the output pins. This may allow a non-SELV voltage to appear between the output pins and ground.

The power module has extra-low voltage (ELV) outputs when all inputs are ELV.

All flammable materials used in the manufacturing of these modules are rated 94V-0, or tested to the UL60950 A.2 for reduced thickness.

For input voltages exceeding –60Vdc but less than or equal to –75Vdc, these converters have been evaluated to the applicable requirements of **BASIC INSULATION** between secondary **DC MAINS DISTRIBUTION** input (classified as TNV-2 in Europe) and unearthed SELV outputs.

The input to these units is to be provided with a maximum 15A fast-acting fuse in the ungrounded lead.

Feature Descriptions Remote On/Off

Two remote on/off options are available. Positive logic (device code suffix “P”) turns the module on during a logic high voltage on the ON/OFF pin, and off during a logic low. Negative logic remote On/Off, device code suffix “N”, turns the module off during a logic high and on during a logic low.

To turn the power module on and off, the user must supply a switch (open collector or equivalent) to control the voltage ($V_{on/off}$) between the ON/OFF terminal and the VIN(-) terminal, see **Fig 4. Remote On/Off**. Logic low is $0V \leq V_{on/off} \leq 0.6V$. The maximum $I_{on/off}$ during a logic low is 0.15mA; the switch should maintain a logic low level whilst sinking this current. During a logic high, the typical maximum $V_{on/off}$ generated by the module is 5V, and the maximum allowable leakage current at $V_{on/off} = 5V$ is 1 μ A.

If not using the remote on/off feature:

For positive logic, leave the ON/OFF pin open.

For negative logic, short the ON/OFF pin to VIN(-).

Remote Sense

Remote sense minimizes the effects of distribution losses by regulating the voltage at the remote-sense connections, see **Fig 5. Remote Sense** for the detail configuration. The voltage between the remote-sense pins and the output terminals must not exceed the output voltage sense range given in the Feature Specifications table:

$$[V_{O(+)} - V_{O(-)}] - [SENSE(+)] - SENSE(-)] \leq 0.5 V$$

Although the output voltage can be increased by both the remote sense and by the trim, the maximum increase for the output voltage is not the sum of both. The maximum increase is the larger of either the remote sense or the trim.

The amount of power delivered by the module is defined as the voltage at the output terminals multiplied by the output current. When using remote sense and trim, the output voltage of the module can be increased, which at the same output current would increase the power output of the module. **Care should be taken to ensure that the maximum output power of the module remains at or below the maximum rated power (Maximum rated power = $V_{o,set} \times I_{o,max}$).**

Output Trim

MQ9324ET120 output can be trimmed up or down by connecting one resistor to output negative or positive end as **Fig 6.**

Output Trim.

Connecting an external resistor (R_{DN}) between the TRIM pin and the $V_{O(-)}$ pin decreases the output voltage set point. To maintain set point accuracy, the trim resistor tolerance should be $\pm 1.0\%$. The following equation determines the required external resistor value:

$$R_{DN} = \left(\frac{5.11 * V_{O,SET}}{V_{O,SET} - V_{O,DN}} - 10.22 \right) K\Omega$$

$V_{O,SET}$ is the output default set-point voltage of the module, $V_{O,DN}$ is the desired trim-down output voltage.

Connecting an external resistor (R_{UP}) between the TRIM pin and the $V_{O(+)}$ pin increases the output voltage set point. The following equation determines the required external resistor value:

$$R_{UP} = \left[\frac{5.11 * V_{O,SET}}{V_{O,UP} - V_{O,SET}} * \left(\frac{V_{O,UP}}{1.24} - 1 \right) - 10.22 \right] K\Omega$$

$V_{O,SET}$ is the output default set-point voltage of the module, $V_{O,UP}$ is the desired trim-up output voltage.

Input Under-Voltage Lockout

At input voltages below the input under-voltage lockout limit, the module operation is disabled. The module will only begin to operate once the input voltage is raised above the under-voltage lockout turn-on threshold, $V_{UV/ON}$. Once operating, the module will continue to operate until the input voltage is taken below the under-voltage turn-off threshold, $V_{UV/OFF}$.

Output Overvoltage Protection

The output overvoltage protection scheme of the modules has an independent over voltage loop to prevent single point of failure. This protection feature latches in the event of over voltage across the output. Cycling the on/off pin or input voltage resets the latching protection feature. If the auto-restart option is ordered, the module will automatically restart upon an internally programmed time elapsing.

Overcurrent Protection

To provide protection in a fault (output overload) condition, the unit is equipped with internal current-limiting circuitry and can endure current limiting continuously. At the point of current-limit inception, the unit enters hiccup mode. If the unit is not configured with auto-restart, then it will latch off following the over current condition. The module can be restarted by cycling the dc input power for at least one second or by toggling the remote on/off signal for at least one second.

If the unit is configured with the auto-restart option, it will remain in the hiccup mode as long as the Overcurrent condition exists; it operates normally, once the output current is brought back into its specified range. The average output current during hiccup is 10% $I_{O, max}$.

Thermal Considerations

The power modules operate in a variety of thermal environments; however, sufficient cooling should be provided to help ensure reliable operation. Considerations include ambient temperature, airflow, module power dissipation, and the need for increased reliability. A reduction in the operating temperature of the module will result in an increase in reliability. The thermal data presented here is based on physical measurements taken in a wind tunnel, using automated thermocouple instrumentation to monitor key component temperatures: FETs, diodes, control ICs, magnetic cores, ceramic capacitors, opto-isolators, and module pwb conductors, while controlling the ambient airflow rate and temperature. For a given airflow and ambient temperature, the module output power is increased, until one (or more) of the components reaches its maximum derated operating temperature, as defined in IPC-9592. This procedure is then repeated for a different airflow or ambient temperature until a family of module output derating curves is obtained.

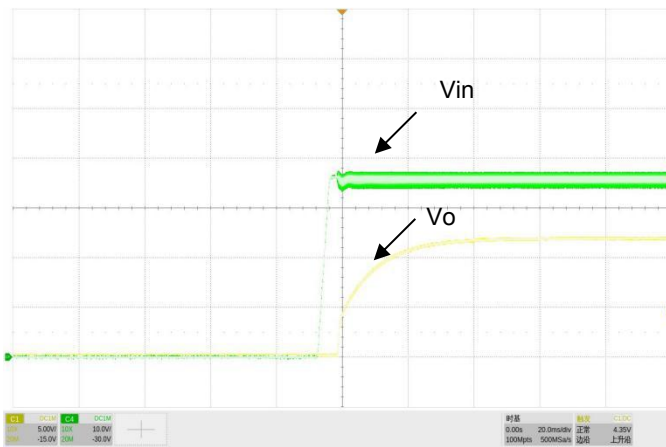
Typical Characteristics– MQ9324ET120

General conditions:

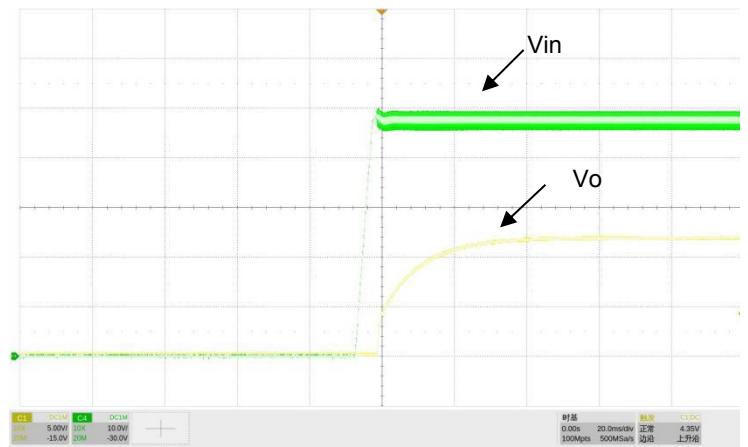
Input filter: 100 μ F/100V E-cap

Output filter: 220 μ F/25V Solid output cap +1206-106/25V Ceramic capacitors

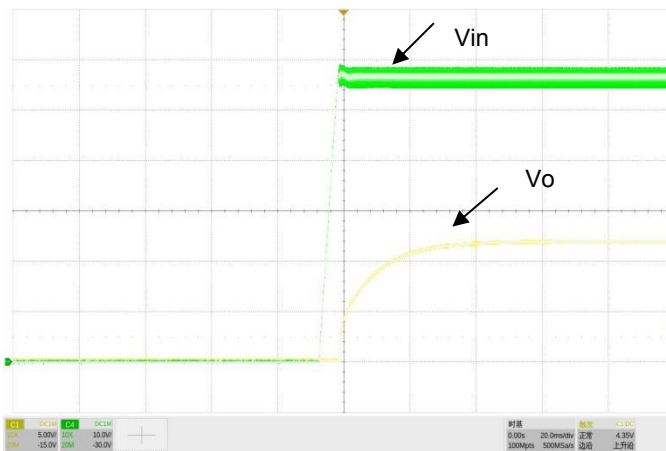
Start-up



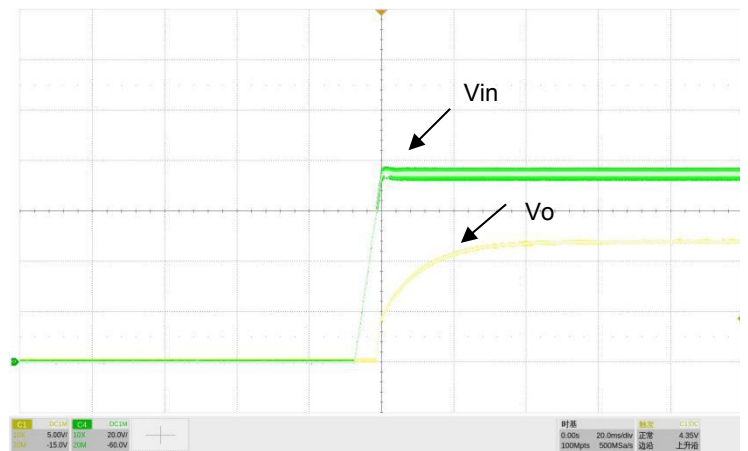
Vin=36V Io=100%



Vin=48V Io=100%

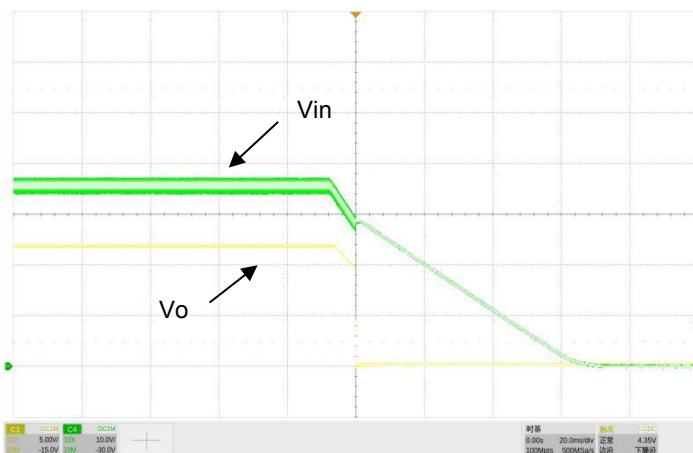


Vin=57V Io=100%

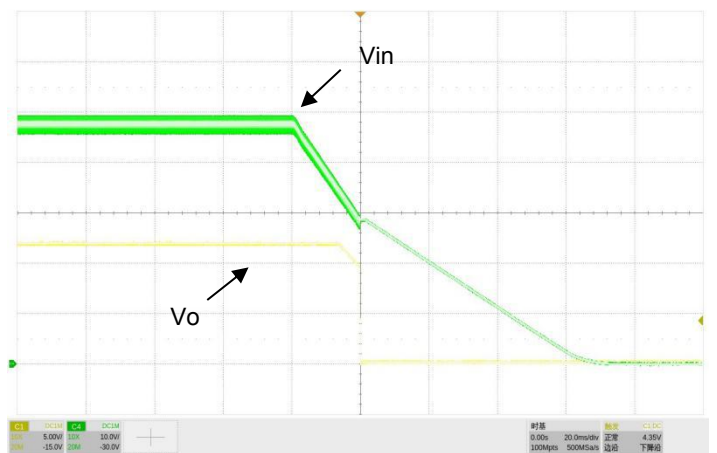


Vin=75V Io=100%

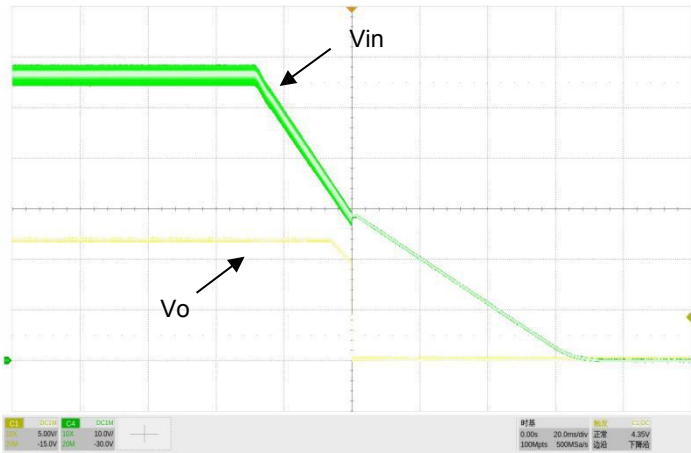
Shut Down



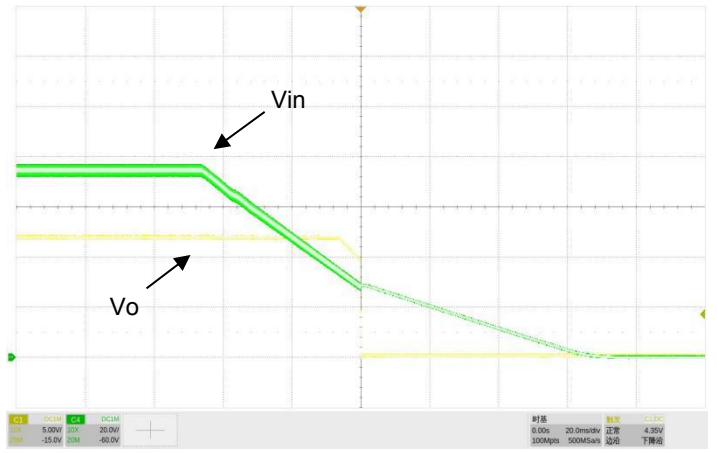
Vin=36V Io=100%



Vin=48V Io=100%

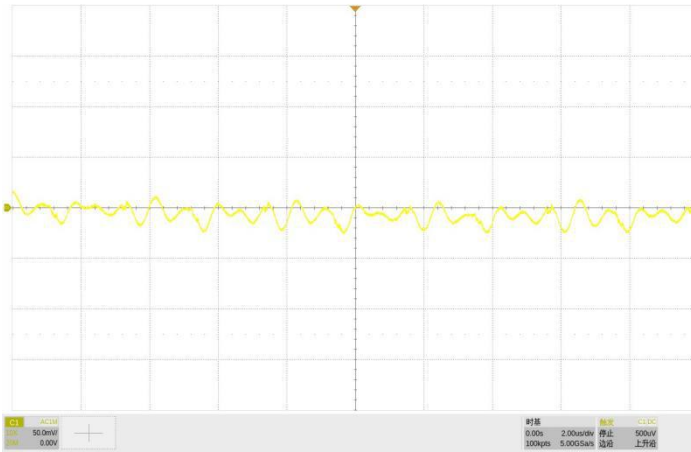


Vin=57V Io=100%

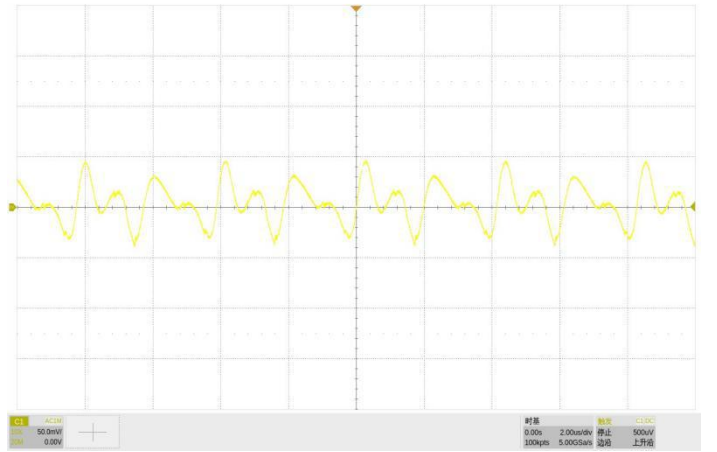


Vin=75V Io=100%

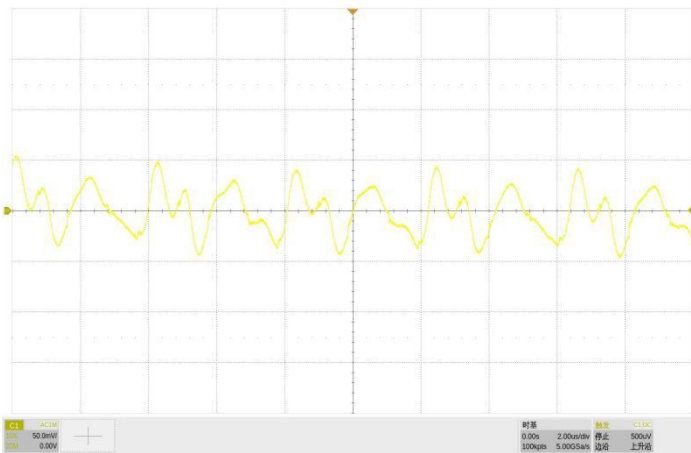
Output Ripple & Noise



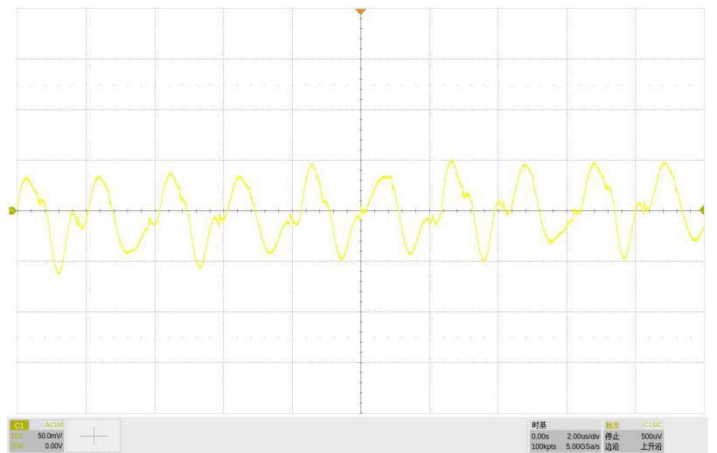
Vin=36V Io=100%



Vin=48V Io=100%

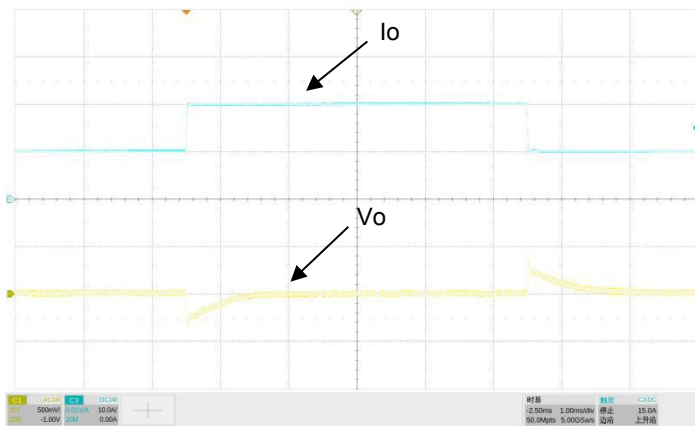


Vin=57V Io=100%



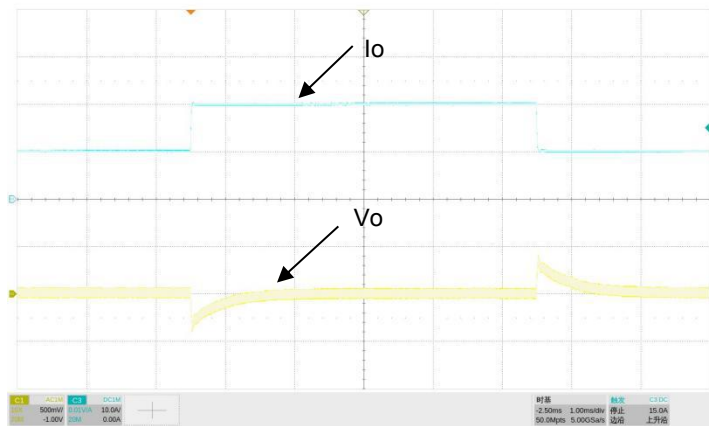
Vin=75V Io=100%

Output Load Transient Response



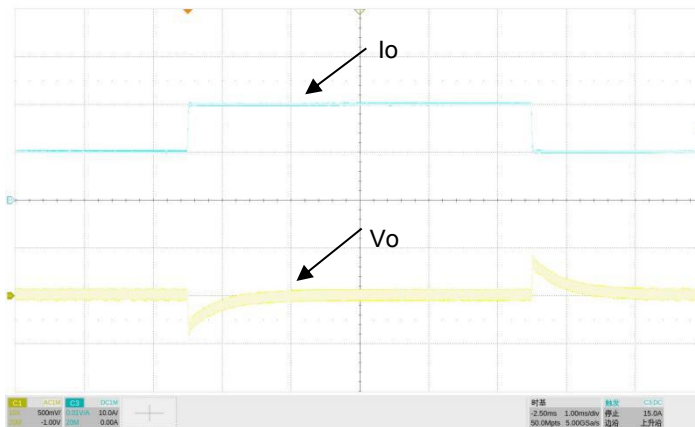
Vin=36V Io=50%~100%~50%

Co= 220 μ F/25V Solid output cap +1206-106/25V Ceramic capacitors; di/dt=0.1A/ μ s



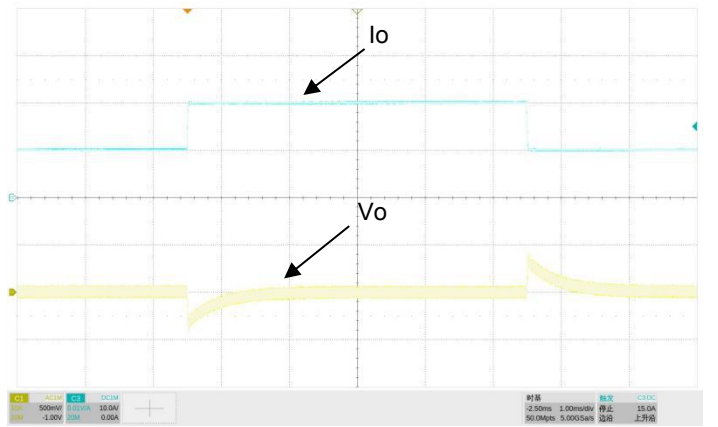
Vin=48V Io=50%~100%~50%

220 μ F/25V Solid output cap +1206-106/25V Ceramic capacitors; di/dt=0.1A/ μ s



Vin=57V Io=50%~100%~50%

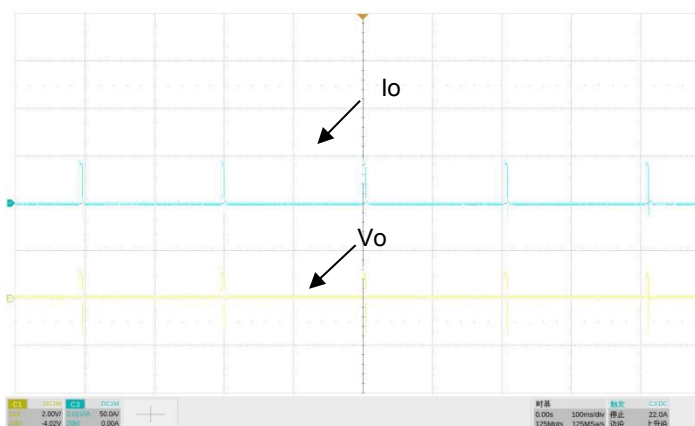
Co= 220 μ F/25V Solid output cap +1206-106/25V Ceramic capacitors; di/dt=0.1A/ μ s



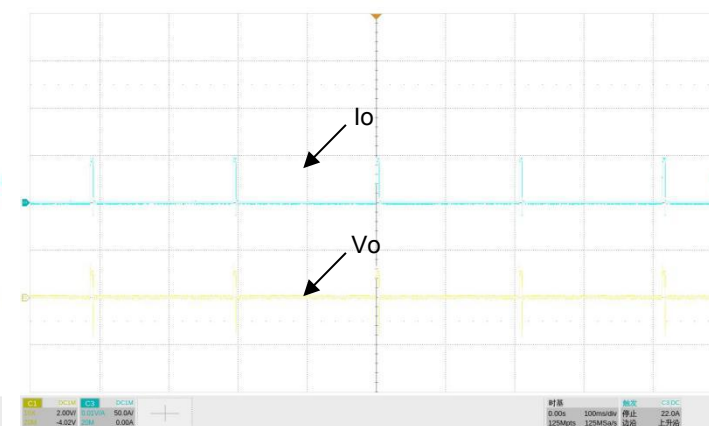
Vin=75V Io=50%~100%~50%

Co= 220 μ F/25V Solid output cap +1206-106/25V Ceramic capacitors; di/dt=0.1A/ μ s

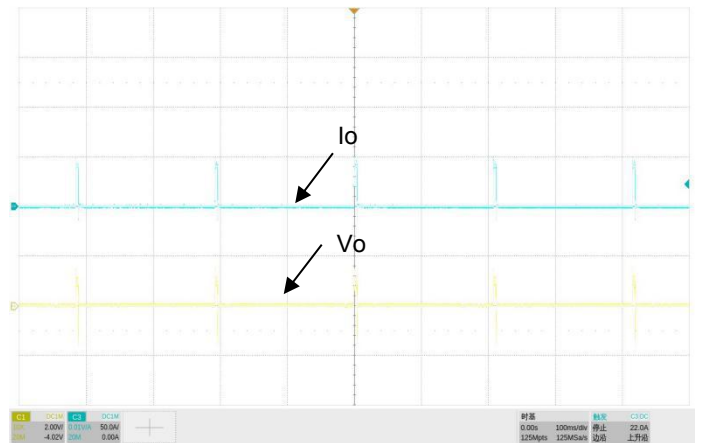
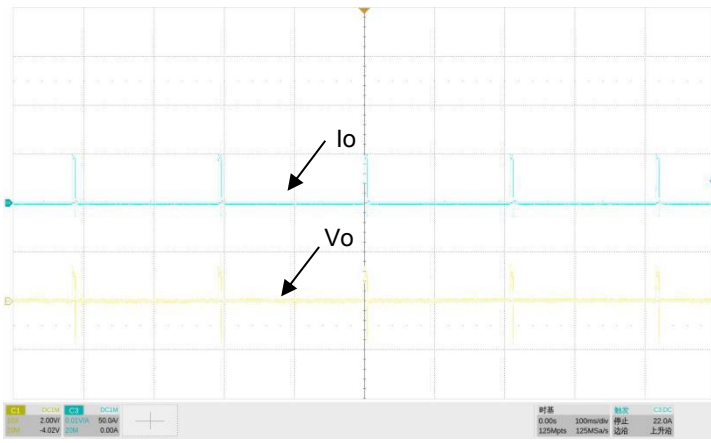
Short protect



Vin=36V

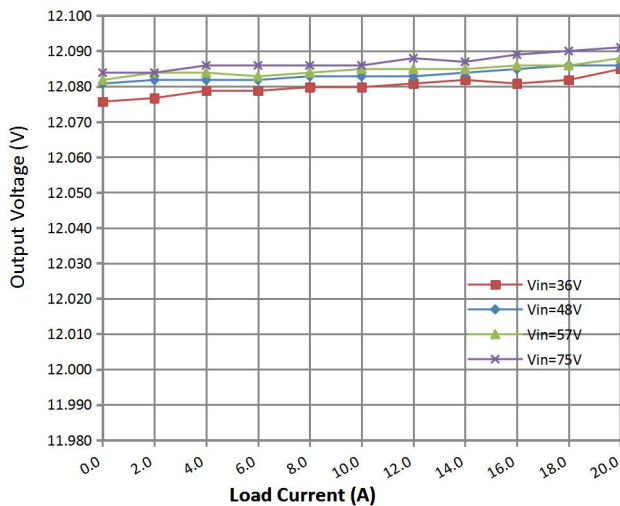
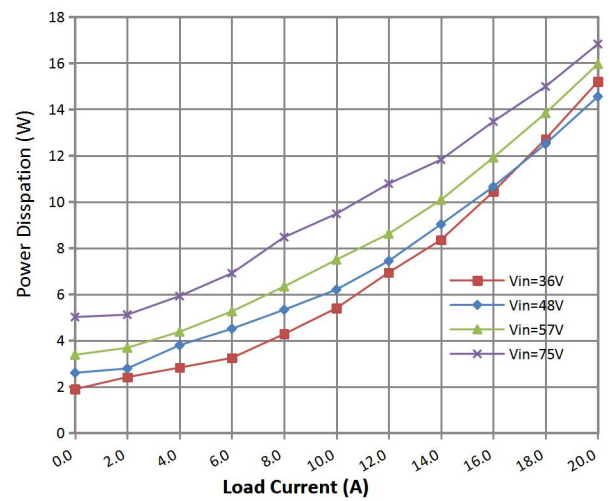
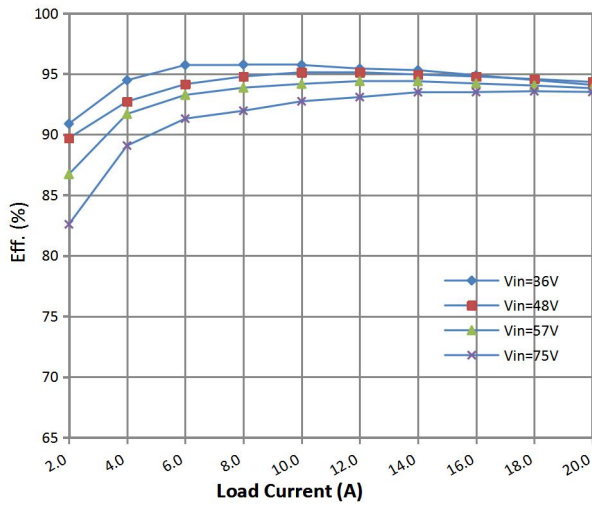


Vin=48V



Vin=57V

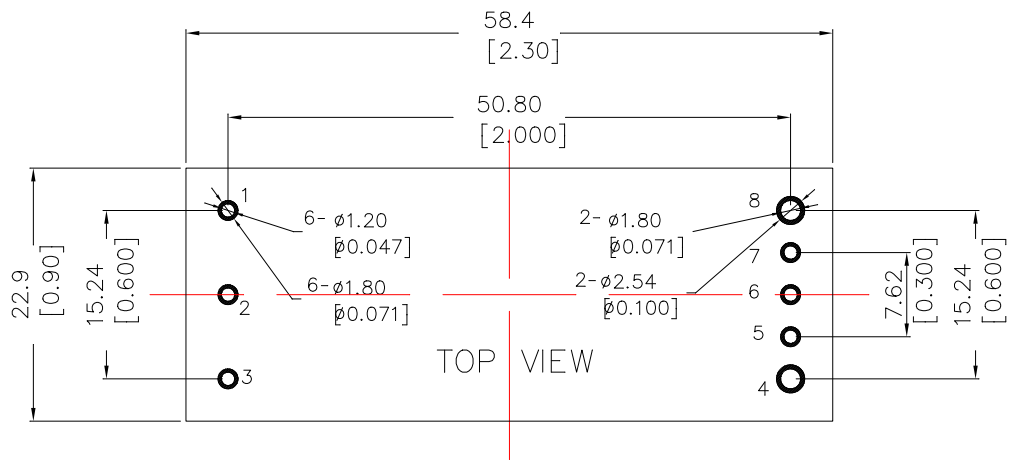
Vin=75V



Recommended PAD Pattern

Unit: millimeters (inches)

Tolerances: x.x ±1.0 mm (0.02in), x.xx ±0.25 mm (0.010in), unless otherwise noted



Component side footprint

