

## SMD High Current Molded Inductors - FCH1050 - Series

FCH1050-Series

**●Features:**

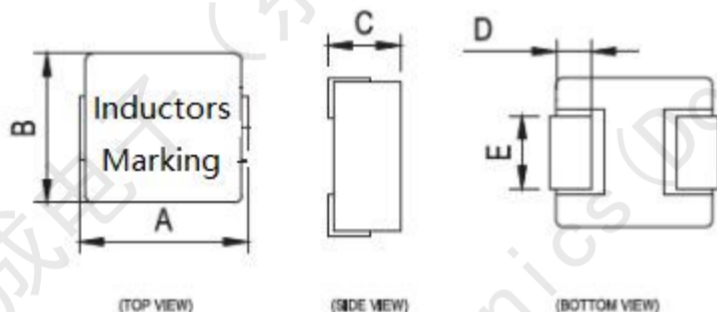
- Ultra low cost
- Shielded constructions
- High current rating up to DC 38Amp
- High frequency range up to 5MHz
- Very low DC resistance
- Low Noise
- RoHS compliant

**●Applications:**

- PDA/Notebook/Desktop/Server applications
- DC/DC converter

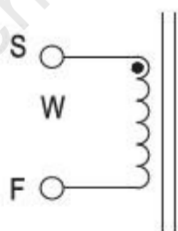


### 1.Shapes and Dimensions (形状及尺寸)

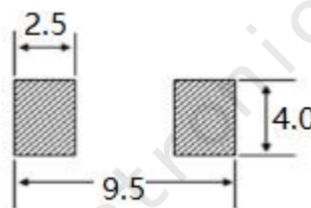


Type	A	B	C	D	E
FCH1050	11.5 MAX	10.5 MAX	5.0 MAX	2.3±0.3	3.0±0.3

### 2.Schematic:



### 3.layout recommendation:(mm)



SMD High Current Molded Inductors -FCH1050 - Series

4. FCH1050 -Series:

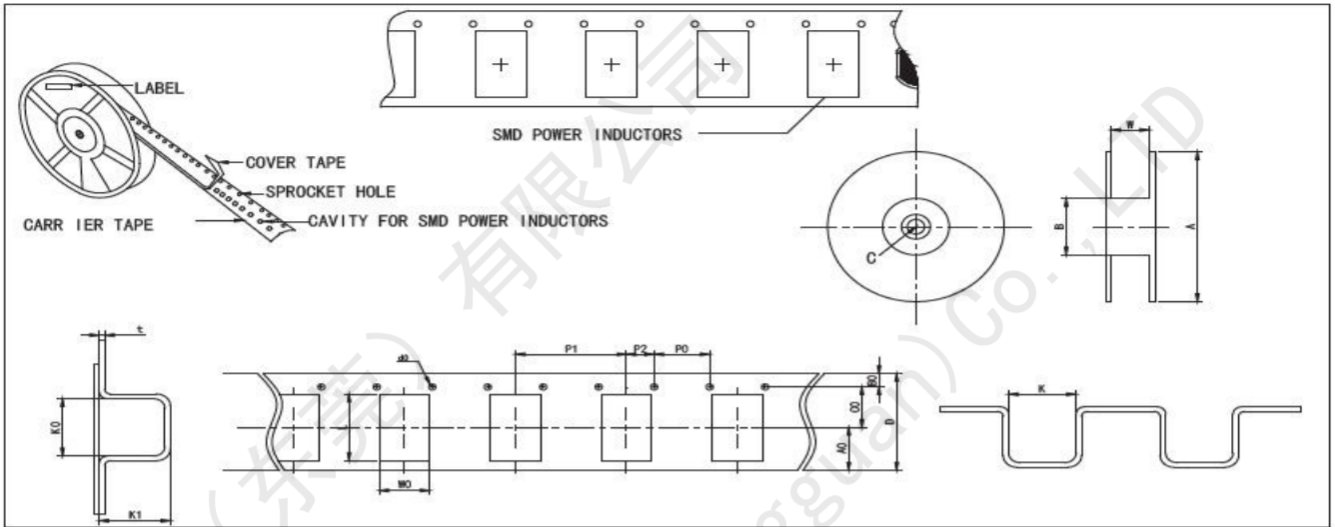
Part Number (品名)	Inductance (uH) ±20% (电感值)	DCR(mΩ) (直流阻抗)		Isat DC Current (A) (饱和电流)	Irms DC Current (A) (温升电流)
		Typical	MAX	Typical	Typical
FCH1050-R22M	0.22	0.6	0.8	45.0	38.0
FCH1050-R33M	0.33	0.9	1.2	40.0	35.0
FCH1050-R47M	0.47	1.0	1.3	38.0	35.0
FCH1050-R68M	0.68	1.3	1.5	35.0	28.0
FCH1050-1R0M	1.00	2.1	2.4	25.0	22.0
FCH1050-1R5M	1.50	3.4	4.4	24.0	20.0
FCH1050-1R8M	1.80	4.2	4.6	23.0	20.0
FCH1050-2R2M	2.20	5.9	6.8	21.5	18.0
FCH1050-3R3M	3.30	7.0	8.1	20.0	15.0
FCH1050-4R7M	4.70	11.0	14.0	14.0	12.0
FCH1050-5R6M	5.60	15.0	18.0	14.0	11.0
FCH1050-6R8M	6.80	15.3	19.2	12.5	11.0
FCH1050-8R2M	8.20	22.0	25.0	12.5	9.0
FCH1050-100M	10.00	23.0	28.0	10.5	8.0
FCH1050-150M	15.00	34.0	42.0	8.0	7.0
FCH1050-220M	22.00	58.0	66.0	7.0	6.0
FCH1050-330M	33.00	72.0	90.0	6.0	5.0
FCH1050-470M	47.00	105.0	126.0	5.2	4.0
FCH1050-680M	68.00	159.0	201.7	4.0	3.0
FCH1050-101M	100.00	233	274	3.5	2.0
FCH1050-151M	150.00	377	415	3.0	2.0
FCH1050-221M	220.00	450	490	1.5	1.2

Remark:

- <1>Inductance: 100KHz 0.1V
- <2>Tolerance of inductance:±20%
- <3>Isat: The value of curret indicates that inductance drops 30%( Typcial ) from its initial value
- <4>Irms:The value of current indicates that the temperature of the coil is increase 40°C (Typical)
- <5>Test condition: Ta= 25°C

## SMD High Current Molded Inductors -FCH1050 - Series

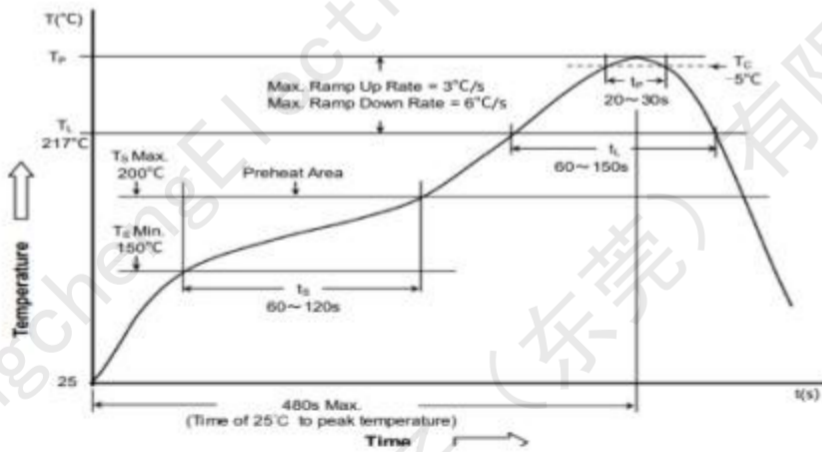
### 5.FCH1050-Series



#### 5.1 Reel Dimensions & Packing Unit (卷轴尺寸及包装数量)

Part Number 品名	Dimensions of Reel 卷轴尺寸				Packaging Unit 包装数
	A	B	C	W	
FCH1050	330	100.0±2.00	13.5±1.0	24.0±0.50	1000pcs/r/800pcs/r

#### 6. Reflow Profile for SMT Components



	Package Thickness 封装厚度	Package Volume 封装体积		
		<350 mm <sup>3</sup>	350~2000 mm <sup>3</sup>	>2000 mm <sup>3</sup>
PB-Free Assembly 无铅装配	<1.6mm	260°C	260°C	260°C
	1.6~2.5mm	260°C	250°C	245°C
	≥2.5mm	250°C	245°C	245°C

※ Reflow is referred to standard IPC/JEDEC J-STD-020D.  
回流焊参照标准 IPC/JEDEC J-STD-020D.