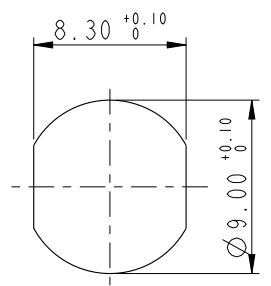
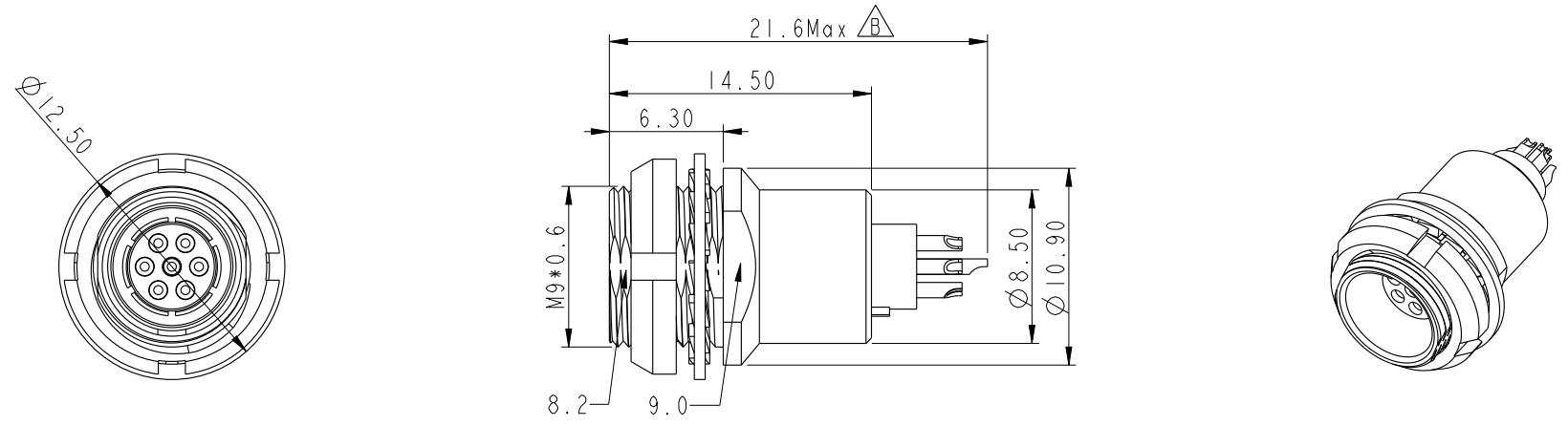
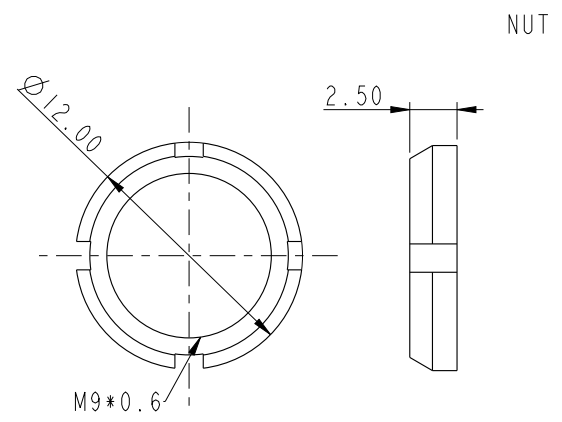


THIS DOCUMENT IS SUBJECT TO CHANGE WITHOUT NOTICE. IT IS CONFIDENTIAL AND A PROPERTY OF Amphenol LTW. DISCLOSURE TO THIRD PARTY HAS TO BE AUTHORIZED BY Amphenol LTW.

REV.	ECN NO.	DATE	SIGN	DESCRIPTION
B	C220669	2022-05-11	Ouyang	$\triangle B$ x2



Recommended Panel Cut-Out Rear View



- Note: $\triangle B$
- * RoHS Compliant
 - * CC Important Dimension
 - * Connector
 - Housing: Thermoplastic, Beige
 - Pin: Copper Alloy, Gold Plated
 - * Shield: Meta
 - * Nut: Metal
 - * Use without waterproof cap or dust cap
 - Panel thickness max: 2.5mm
 - * Metal Gasket and nut are assembled on connectors

UNIT: mm		
TOLERANCE	$\pm 0.5\text{mm}$	

TITLE FLO OB R PANEL CONNECTOR			
SCALE 1:1	SIZE A4	SHEET 1 OF 2	
REV. B	WC-REV. A.1	CC : Inspection item	

Amphenol LTW
安費諾亮泰企業股份有限公司

ITEM NO.	DRAWN BY Ouyang	DATE 2019-05-16
DWG NO. FLBB-XXEFS-XCP-XXX	CHECKED BY Jerry	DATE 2019-05-16
CUSTOMER ALTW	APPROVED BY Fred	DATE 2019-05-16

THIS DOCUMENT IS SUBJECT TO CHANGE WITHOUT NOTICE. IT IS CONFIDENTIAL AND A PROPERTY OF Amphenol LTW. DISCLOSURE TO THIRD PARTY HAS TO BE AUTHORIZED BY Amphenol LTW.

FLBB-XXEFS-XCP-XXX

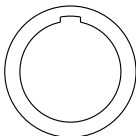
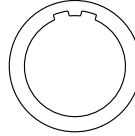
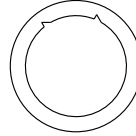
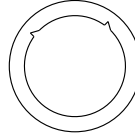
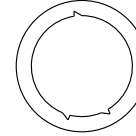
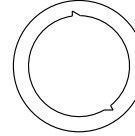
SERIAL NO.

KEY POINT ①

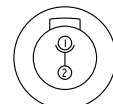
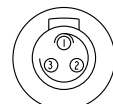
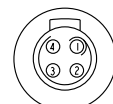




PIN CONFIGURATION ②


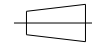
SIZE(CONNECTOR)

KEY POINT ①

CODE	G	A	B	C	J	F
	0°	30°	60°	90°	45°	155°
GRAPHIC						

PIN CONFIGURATION (Solder Definition) ②

GRAPHIC	 2 PIN	 3 PIN	 4 PIN	 5 PIN	 6 PIN	 7 PIN	 9 PIN
---------	--	--	--	--	--	--	--

UNIT:mm		
TOLERANCE		
±0.5mm		

TITLE FLO O B R PANEL CONNECTOR			
SCALE 1:1	SIZE A4	SHEET 2 OF 2	
REV. B	WC-REV. A.1	QC: Inspection item	

Amphenol LTW
安費諾亮泰企業股份有限公司

ITEM NO	DRAWN BY Ouyang	DATE 2019-04-10
DWG NO FLBB-XXEFS-XCP-XXX	CHECKED BY Jerry	DATE 2019-04-10
CUSTOMER ALTW	APPROVED BY Fred	DATE 2019-04-10