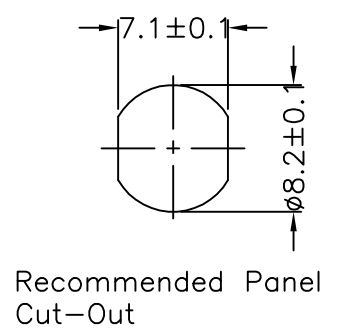
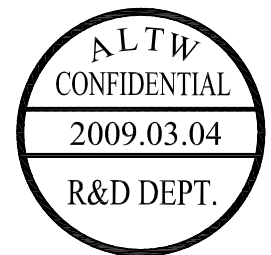
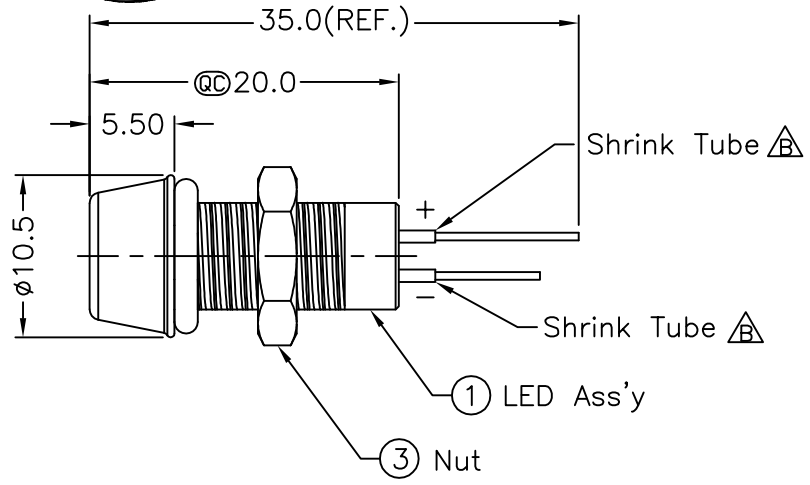
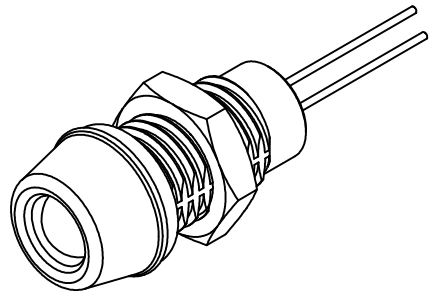


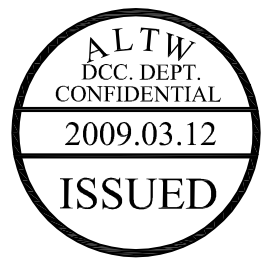
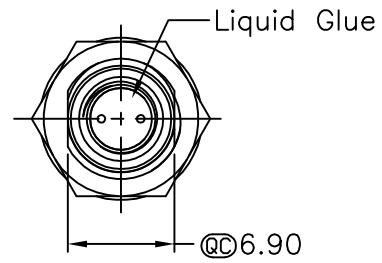
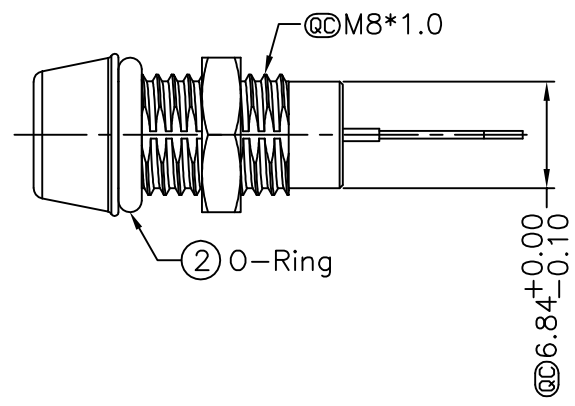
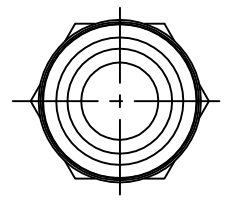
| REV. | ECN NO. | DATE | SIGN | DESCRIPTION |
|------|------------|------------|------------|-------------------------|
| B | LE3-850102 | 2008/05/14 | Rex | LED Pin Add Shrink Tube |
| C | LEN-8B0712 | 2008/11/24 | TOMMY | CHANGE THE NOTE |
| D | LEN-930482 | 2009/03/04 | ZhaoRongFu | Add Waterproof Rate |



Recommended Panel Cut-Out



- Notes:
- * @C Important Dimension To Check
 - * Waterproof Rate: IP67
 - * LED Holder: Brass, Nickel Plating
 - * LED Spec:
 - ø5mm, Yellow LED (高亮度)
 - Lens Color: Water Clear
 - Forward Voltage: Yellow Typ. 2.0V
 - Forward Current: Yellow Typ. 30mA
 - Luminous Intensity: Yellow Typ. 4500(Mcd)
 - Reverse Voltage: DC 5V
 - Operating Temperature: -40~+80°C
 - * Gasket: EPDM, Black
 - * Screw Nut: Brass, Nickel Plating
 - * For Panel Thickness 6.5 max.



| | |
|-----------|-------|
| UNIT:mm | |
| TOLERANCE | |
| .X | ±0.25 |
| .XX | ±0.1 |
| .XXX | ±0.05 |
| ANGLES | ±1° |

| | |
|-------------------------------------------------------|-----------------|
| TITLE Waterproof Led (ø5mm) Yellow, Solder Type | |
| SCALE Free | SHEET 1 OF 1 |
| REV. D | SIZE A4 |
| @C : Inspection Item | |

Amphenol LTW
安費諾亮泰企業股份有限公司

| |
|------------------------------|
| ITEM NO L08-01YBAS-MR7001 |
| DWG NO L08-01YBAS-MR7001 |
| CUSTOMER ALTW |

| |
|--------------------------|
| DRAWN BY Zhao Rong Fu |
| CHECKED BY Prune |
| APPROVED BY LUKE |

| |
|--------------------|
| DATE 2009/03/04 |
| DATE 2009/03/05 |
| DATE 2009/03/05 |

THIS DOCUMENT IS SUBJECT TO CHANGE WITHOUT NOTICE. IT IS CONFIDENTIAL AND A PROPERTY OF Amphenol LTW. DISCLOSURE TO THIRD PARTY HAS TO BE AUTHORIZED BY Amphenol LTW.