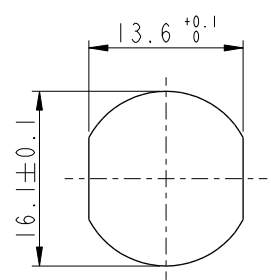


THIS DOCUMENT IS SUBJECT TO CHANGE WITHOUT NOTICE. IT IS CONFIDENTIAL AND A PROPERTY OF Amphenol LTW. DISCLOSURE TO THIRD PARTY HAS TO BE AUTHORIZED BY Amphenol LTW.

REV.	ECN NO.	DATE	SIGN	DESCRIPTION
C	LEN1690060-061	2016/09/05	Yulong_wang	Add 3, 4 Pin & IP69K.
D	C201469	2020/09/24	Ruru	$\triangle D$ X6
E	C210309	2021/02/25	Ruru	$\triangle E$ X2

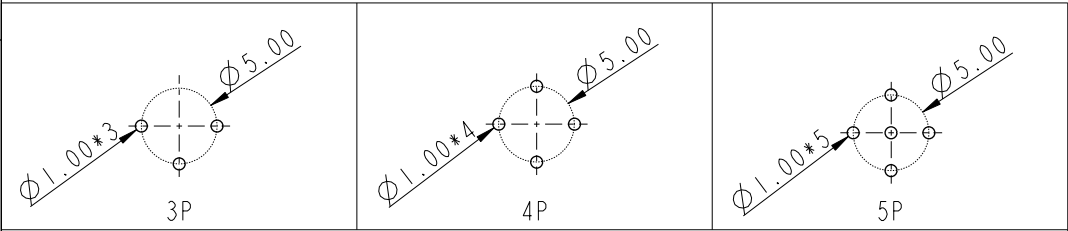
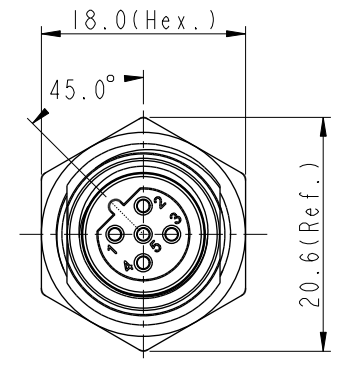
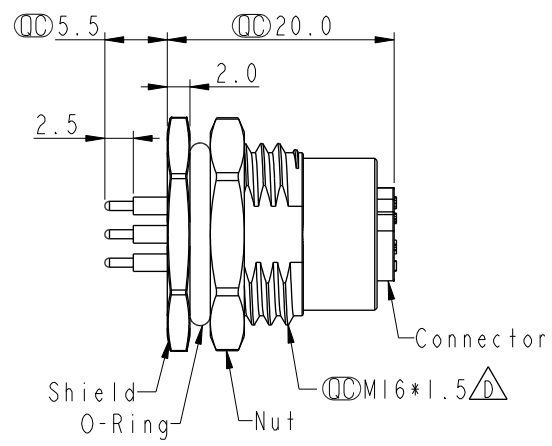
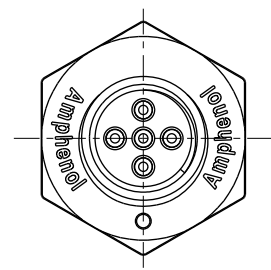


Recommended Panel Cut-Out



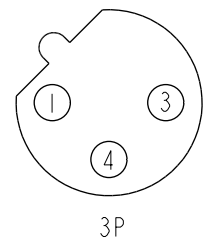
M12B-XXPFFP-SF8002

XX: No. Of Pin

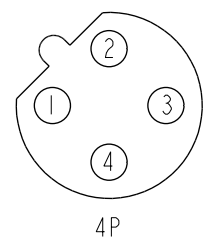


PCB Layout

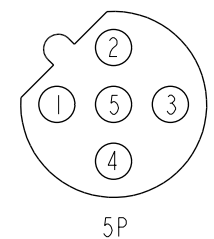
- $\triangle D \triangle E$  Note:
- \* RoHS Compliant
  - \*  $\text{CC}$  Important dimension
  - $\triangle C$  \* Waterproof rate: IPX8, unmated 1m/24h  
IPX9K, unmated
  - \* Connector  
Housing: Thermoplastic, Black  
Pin: Copper alloy, Gold plated  
O-Ring: Rubber, Green
  - \* Shield: Metal
  - \* Nut: Metal
  - \* O-Ring: Rubber, Black
  - \* For panel thickness max: 4.5mm
  - \* Nut is packed separately in pe bag



3P



4P



5P

Pin Assignment Front View

UNIT: mm		
TOLERANCE		
.X	±0.25	
.XX	±0.1	
.XXX	±0.05	
ANGLES	±1°	

TITLE N SEN, M12 B, SCREW RECEPTACLE, F, F, PCB S $\triangle E$		
SCALE 3:2	SIZE A4	SHEET 1 OF 1
REV. E	WC-REV. A.5	$\text{CC}$ : Inspection item

**Amphenol LTW**  
安費諾亮泰企業股份有限公司

ITEM NO.	DRAWN BY Yulong_wang	DATE 2016-09-05
DWG NO. $\triangle A$ M12B-XXPFFP-SF8002	CHECKED BY Jinhai	DATE 2016-09-05
CUSTOMER ALTW	APPROVED BY Jerry	DATE 2016-09-05