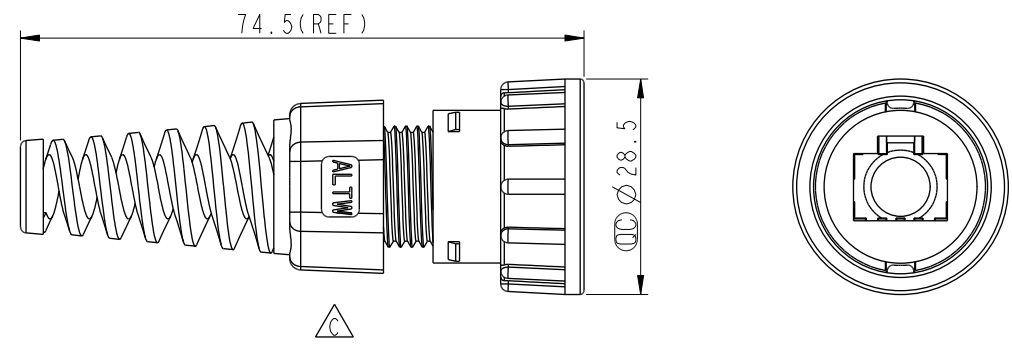
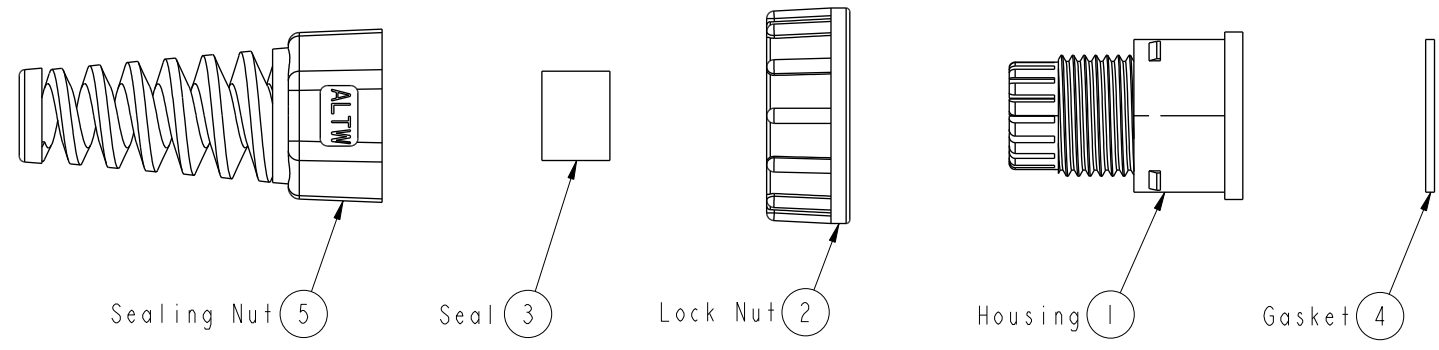


THIS DOCUMENT IS SUBJECT TO CHANGE WITHOUT NOTICE. IT IS CONFIDENTIAL AND A PROPERTY OF AMPHENOL LTW. DISCLOSURE TO THIRD PARTY HAS TO BE AUTHORIZED BY AMPHENOL LTW.

REV.	ECN NO.	DATE	SIGN	DESCRIPTION
B	LE31490146	2014/09/11	Joyy	Change to 94V0 material
C	LEN15A0378	2015/03/30	Ruru	Change Logo
D	C201856	2020/11/25	Vicky	$\triangle D$ *2



- $\triangle D$  Note:
- \*  $\varnothing$  Important Dimension To Check
  - \* Waterproof Rate: IP67, Mated
  - $\triangle B$  \* Housing: Thermoplastic, Black
  - $\triangle B$  \* Lock Nut: Thermoplastic, Black
  - $\triangle B$  \* Gasket: Rubber, Gray
  - $\triangle B$  \* Sealing Nut: Thermoplastic, Black
  - \* Seal: Rubber, Gray
  - \* Seal For Cable OD  $\varnothing 4.5\text{mm} \sim \varnothing 7.5\text{mm}$

UNIT: mm		
TOLERANCE	$\pm 0.25$	
.X	$\pm 0.1$	
.XX	$\pm 0.05$	
.XXX	$\pm 1^\circ$	
ANGLES		

TITLE RJ45 ASSEMBLY LOCK 00 M CONN M PIN $\triangle D$			
SCALE 1:2	SIZE A4	SHEET 1 OF 1	
REV. D	WC-REV. A.1	$\varnothing$ : Inspection item	

**Amphenol LTW**  
安費諾亮泰企業股份有限公司

ITEM NO. RJ-00AMMA-LL7001	DRAWN BY Ruru	DATE 2015-03-30
DWG NO. RJ-00AMMA-LL7001	CHECKED BY Rita	DATE 2015-03-30
CUSTOMER ALTW	APPROVED BY Lion	DATE 2015-03-30