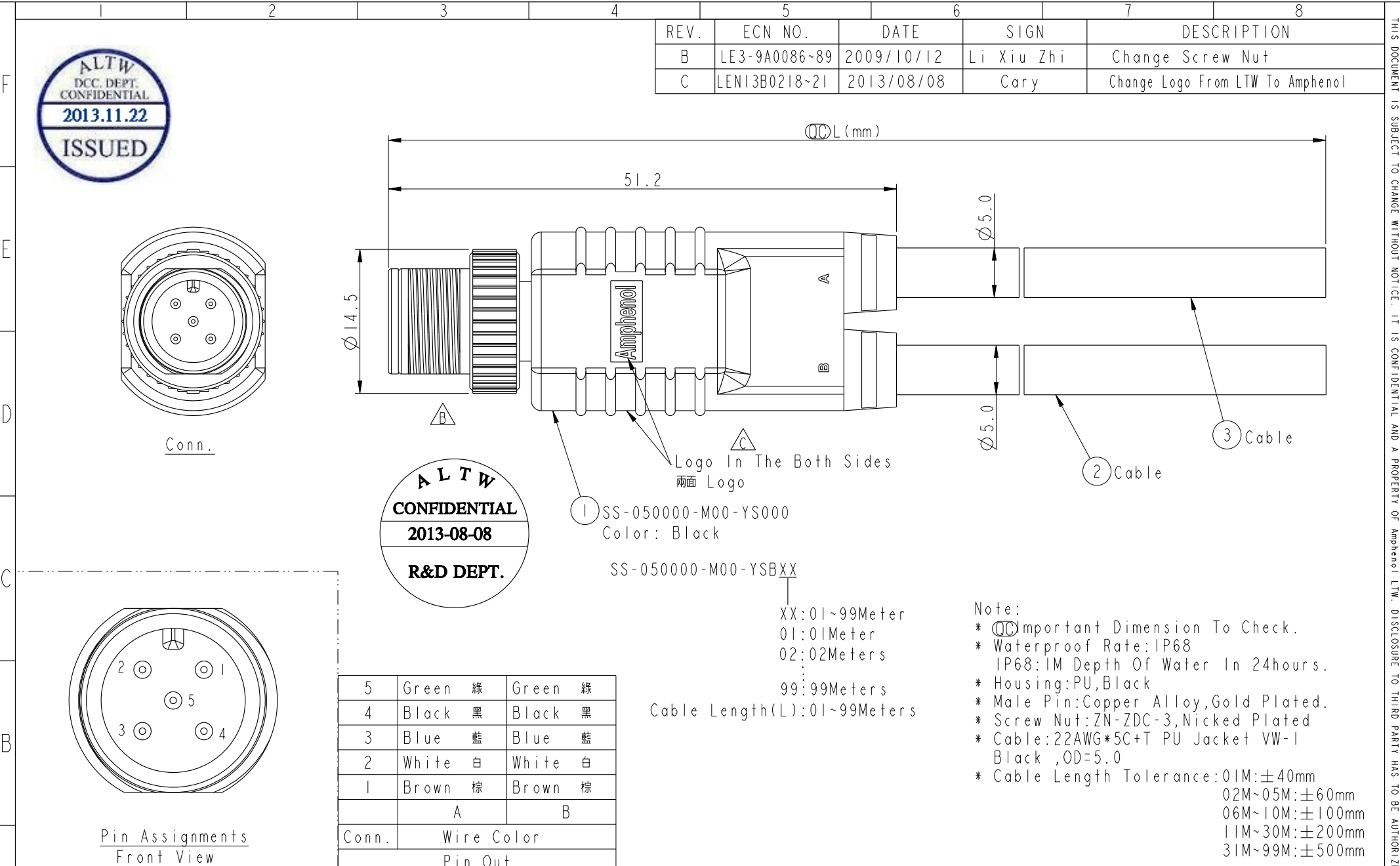


REV.	ECN NO.	DATE	SIGN	DESCRIPTION
B	LE3-9A0086~89	2009/10/12	Li Xiu Zhi	Change Screw Nut
C	LEN13B0218~21	2013/08/08	Cary	Change Logo From LTW To Amphenol



① SS-050000-M00-YS000
Color: Black

SS-050000-M00-YSBXX

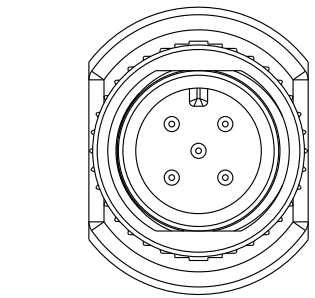
XX:01~99Meter
01:01Meter
02:02Meters

99:99Meters

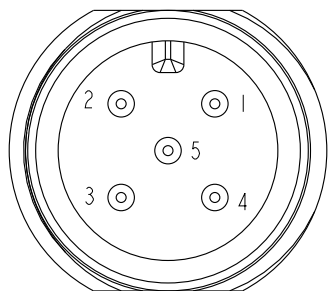
Cable Length(L):01~99Meters

Note:

- * (C) Important Dimension To Check.
- * Waterproof Rate:IP68
IP68:1M Depth Of Water In 24hours.
- * Housing:PU,Black
- * Male Pin:Copper Alloy,Gold Plated.
- * Screw Nut:ZN-ZDC-3,Nicked Plated
- * Cable:22AWG*5C+T PU Jacket VW-1
Black ,OD=5.0
- * Cable Length Tolerance:01M:±40mm
02M~05M:±60mm
06M~10M:±100mm
11M~30M:±200mm
31M~99M:±500mm



Conn.



Pin Assignments
Front View

5	Green 綠	Green 綠
4	Black 黑	Black 黑
3	Blue 藍	Blue 藍
2	White 白	White 白
1	Brown 棕	Brown 棕
	A	B
Conn.	Wire Color	
	Pin Out	

UNIT:mm	
TOLERANCE	±0.5mm

TITLE M12 Series Sensor Conn. 5Pin Male Conn. Male Pin			
SCALE 2:1	SIZE A4	SHEET 1 OF 1	
REV. C	WC-REV. A.1	QC: Inspection item	

Amphenol LTW
安費諾亮泰企業股份有限公司

ITEM NO	DRAWN BY Cary_liu	DATE 2013-08-08
DWG NO SS-050000-M00-YSBXX	CHECKED BY Mafei	DATE 2013-08-08
CUSTOMER ALTW	APPROVED BY Victor	DATE 2013-08-08

THIS DOCUMENT IS SUBJECT TO CHANGE WITHOUT NOTICE. IT IS CONFIDENTIAL AND A PROPERTY OF Amphenol LTW. DISCLOSURE TO THIRD PARTY HAS TO BE AUTHORIZED BY Amphenol LTW.